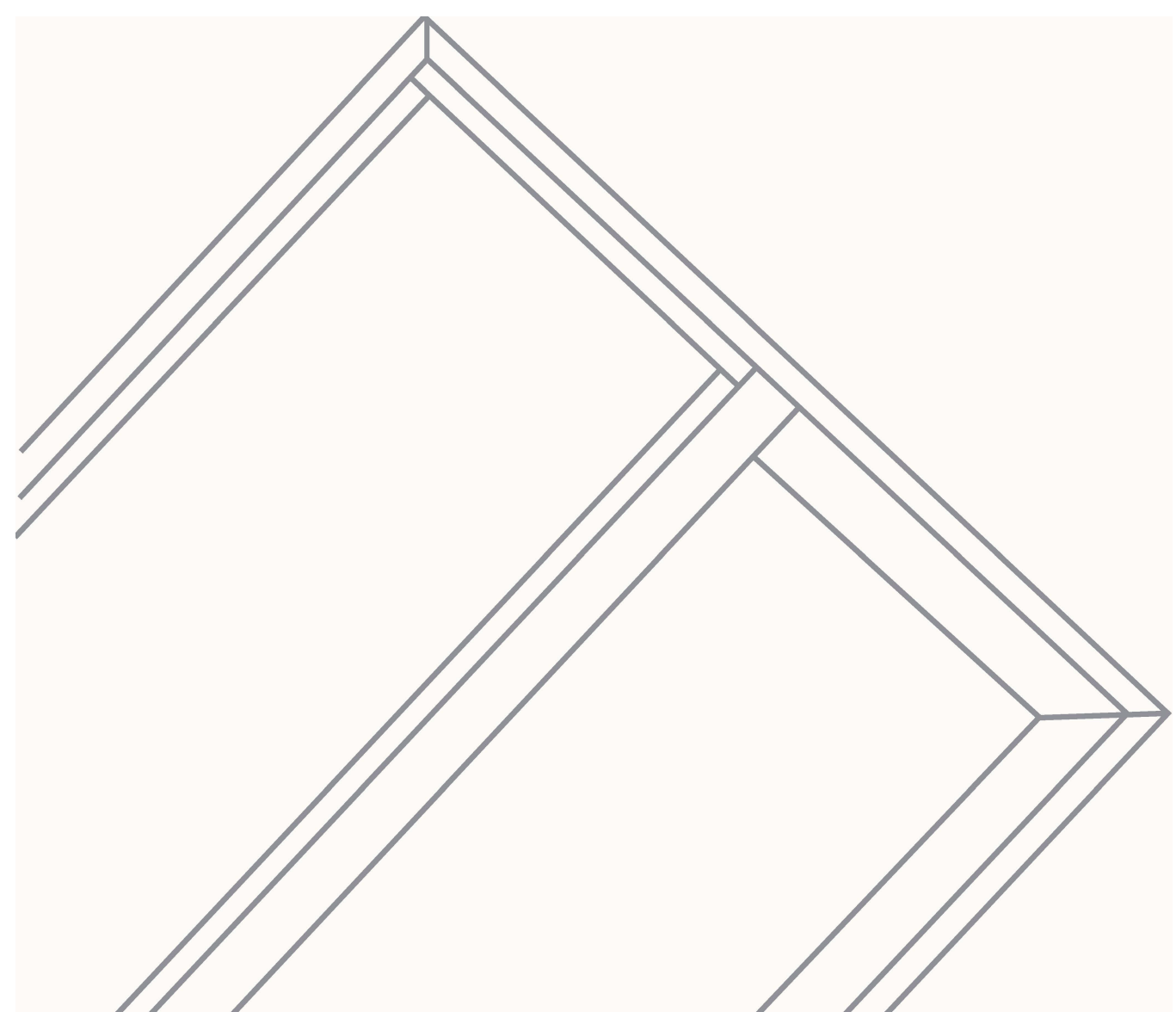




PARIS
FENESTRATION

UN PRODUIT DE QUALITÉ



WHY CHOOSE US ?

- Access to premium, high-end aluminum and stainless steel doors, as well as aluminum windows
- All windows meet top international standards: ENERGY STAR®, NFRC, CE, AS2047, CSA, and ISO 9001 certifications
- High-quality hardware manufactured by a renowned German company
- Backed by over 100 patents, reflecting innovation and advanced engineering
- Available in both double- and triple-pane configurations for superior performance
- Rigorous inspection and testing of every product before delivery to ensure reliability and zero defects
- Commitment to energy efficiency, durability, and long-term value
- Competitive solutions designed to be eco-friendly and cost-effective

Looking for the best? You've found it. We're here to deliver quality, comfort, and peace of mind.



RELIABLE SUPPLIERS

Strictly select high-quality suppliers and form strong alliances

HOPPE 

Germany HOPPE
Hardware

Haida

Haida Rubber strip

SIEGENIA
brings spaces to life

German Hardware



XYG Glass

GU
GRETSCH-UNITAS

Germany GU Hardware



Germany Roto
Hardware



Italy Giesse Hardware

CALDWELL

America CALDWELL

ΨΚΣΒΓ

Germany Kerssenberg

RUIYIDE

RUIYIDE Rubber strip



Britain PAG Hardware

wehag

Wehag Hardware

TECHNOFORM

German Sealing Strip



CONTENTS

ALUMINUM THERMAL BREAK CASEMENT WINDOW SERIES

WY-63 Casement Window	016
WY-77 Casement Window	017
WY-82 Casement Window	018
WY-100 Casement Window	019
WY-104 Casement Window	020
WY-109 Casement Window	021
WY-109 Narrow Casement Window	022
WY-118 Casement Window	023
WY-127 Casement Window	024
WN-85 Inward opening Window	025
WN-94 Inward opening Window	026
WN-96 Narrow Inward opening Window	027
WN-104 Inward opening Window	028
WN-104A Inward opening Window	029
WN-112 Inward opening Window	030
WN-114 Inward opening Window	031

ALUMINUM SLIDING WINDOWS/SLIDING DOOR SERIES

WT-94 Sliding Window	033
WT-95 Sliding sealing Window	034
WT-123 Sliding Sealing Window	035
W-G41 Sliding Sealing Window	036
83 Single Hung Window	037
105 Thermal Break Double Hung Window	038
WT-105B Sliding doordoor	039
WT-135D Sliding door	040
WT-135 Sliding door	041
WT-143 Sliding door	042
WT-150 Thermal break Sliding door	043
WT-103 Extremely narrow Hanging door	044

ALUMINUM SWING DOOR SERIES

WP-54 Narrow Swing door	046
WP-50 Swing door	047
WP-103 Interior Swing door	048

ALUMINUM FOLDING DOOR SERIES

WZ-78 Thermal break Folding door	049
WZ-80 Thermal break Folding door	050
W-Z3 Pivot door	051

ALUMINUM SUNROOM / SKYLIGHT SERIES

120 Series Sunrom	053
138 Series Sunrom	054
150 Series Sunrom	055
W-150 Narrow Curtain wall series	056
W-150 Curtain wall series	057
Skylight	058

OTHER SERIES

Shower room Series	059-060
Entrance Door Series	061-062
Automatic garage door	063-064
Aluminum Shutter	065-066

BROKEN BRIDGE CASEMENT WINDOW SERIES

- Three-way sealing design isobaric principle drainage
- National utility patent-six-point lock on all sides
- National Practical Patent-Built-in Diamond Wire Pressing Line



WY-63

Hand cranked window



PRODUCT PARAMETERS

Water tightness	650 _{pa}
Air tightness	1.8 _{m³/(m·h)}
Wind pressure resistance	4.5K _{pa}
Sound insulation performance	35 _{dB}
U-Factor(U.S./I-P)	0.32
SHGC	0.25

Glass: Double Tempered Glass with argon gas
5mm+20A+5mm
(PVDF Aluminum Strip Between double glass)

Profile: 6063-T5 aluminum profile

Profile Thickness: 1.5MM

Handle: WEHAG Handle in Black and Silver

Hinge: WEHAG Hinge

Lock point: Black Six Point Lock(Invention patent)

Insulation strip: Standard DERCHI insulation strip

Opening Way: Outward Opening / Awning

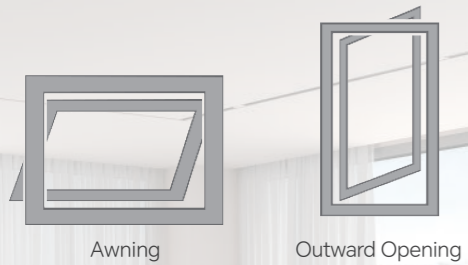
Optional package: New 48 Pack/New 88 Pack

Sealing material: EPDM rubber strip

Available Size: Opening Panel (Width:350-700/Height:400-1600)

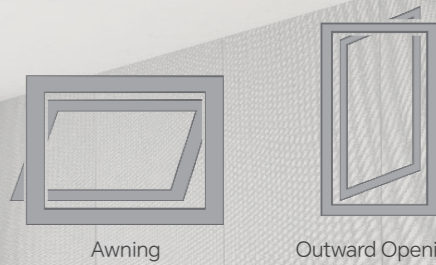
PRODUCT PROCESS

- Process of applying cross-sectional adhesive at a 45 ° angle to the outer frame and glass fan
- Process of filling anti-seepage adhesive at the connection of the central column



Awning

Outward Opening



Awning

Outward Opening

WY-77 **NARROW** Casement Window



PRODUCT PARAMETERS

Water tightness	650 _{pa}
Air tightness	1.8 _{m³/(m·h)}
Wind pressure resistance	4.5K _{pa}
Sound insulation performance	30 _{dB}
U-Factor(U.S./1-P)	0.23
SHGC	0.20

Glass: Double Tempered Glass with argon gas
5mm+27A+5mm
(PVDF Aluminum Strip Between double glass)

Profile: 6063-T5 aluminum profile

Profile Thickness: 1.8MM

Frame width: 77MM

Handle: WEHAG Handle in Black and Silver

Hinge: WEHAG Hinge

Lock point: Black Two Point Lock(Invention patent)

Insulation strip: Standard DERCHI insulation strip

Opening Way: Outward Opening / Awning

Sealing material: Standard Jiangyin Haida rubber strip

Available Size: Opening Panel (Width:400-750/Height:400-1500)

PRODUCT PROCESS

- Process of applying cross-sectional adhesive at a 45° angle to the outer frame and glass fan
- Whole frame two-component injection molding process

WY-82 Casement Window



PRODUCT PARAMETERS

Water tightness	700 _{pa}
Air tightness	1.2 _{m³/(m·h)}
Wind pressure resistance	5K _{pa}
Sound insulation performance	35 _{dB}
U-Factor(U.S./1-P)	0.23
SHGC	0.20

Glass: Double Tempered Glass with argon gas
5mm+27A+5mm
(PVDF Aluminum Strip Between double glass)

Profile: 6063-T5 aluminum profile

Profile Thickness: 1.8MM

Frame width: 82MM

Handle: WEHAG Handle in Black and Silver

Hinge: WEHAG Hinge

Lock point: Black Six Point Lock(Invention patent)

Insulation strip: Standard DERCHI insulation strip

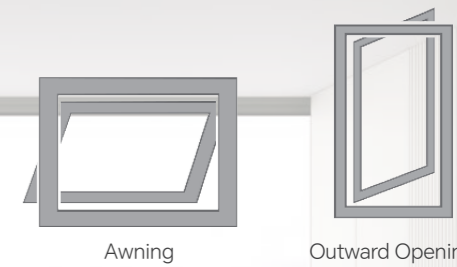
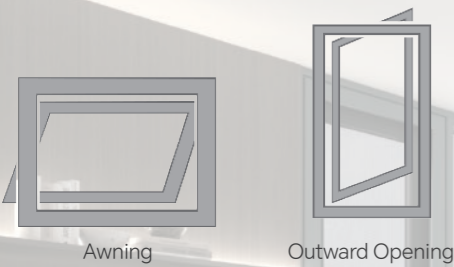
Opening Way: Outward Opening / Awning

Sealing material: Standard Jiangyin Haida rubber strip

Available Size: Opening Panel (Width:400-750/Height:400-1500)

PRODUCT PROCESS

- Process of applying cross-sectional adhesive at a 45° angle to the outer frame and glass fan
- Whole frame two-component injection molding process



WY-100

Casement Window



PRODUCT PARAMETERS

Water tightness	700 _{pa}
Air tightness	1.2 _{m³/(m·h)}
Wind pressure resistance	5K _{pa}
Sound insulation performance	35 _{dB}
U-Factor(U.S./1-P)	0.23
SHGC	0.20

Glass: Double Tempered Glass with argon gas
5mm+27A+5mm
(PVDF Aluminum Strip Between double glass)

Profile: 6063-T5 aluminum profile

Profile Thickness: 1.8MM

Frame width: 100MM

Handle: WEHAG Handle in Black and Silver

Hinge: WEHAG Hinge

Lock point: Black Two Point Lock(Invention patent)

Insulation strip: Standard DERCHI insulation strip

Opening Way: Outward Opening / Awning

Optional package: New 48 Pack/New 88 Pack

Sealing material: Standard Jiangyin Haida rubber strip

Available Size: Opening Panel (Width:350-750/Height:400-1500)

PRODUCT PROCESS

- Process of applying cross-sectional adhesive at a 45 ° angle to the outer frame and glass fan
- Whole frame two-component injection molding process

WY-104 NARROW

Casement Window



PRODUCT PARAMETERS

Water tightness	700 _{pa}
Air tightness	1.2 _{m³/(m·h)}
Wind pressure resistance	5K _{pa}
Sound insulation performance	35 _{dB}
U-Factor(U.S./1-P)	0.23
SHGC	0.20

Glass: Double Tempered Glass with argon gas
5mm+27A+5mm
(PVDF Aluminum Strip Between double glass)

Profile: 6063-T5 aluminum profile

Profile Thickness: 1.8MM

Frame width: 104MM

Handle: WEHAG Handle in Black and Silver

Hinge: WEHAG Hinge

Lock point: Black Two Point Lock(Invention patent)

Insulation strip: Standard DERCHI insulation strip

Opening Way: Outward Opening / Awning

Sealing material: Standard Jiangyin Haida rubber strip

Available Size: Opening Panel (Width:350-750/Height:400-1600)

PRODUCT PROCESS

- Process of applying cross-sectional adhesive at a 45 ° angle to the outer frame and glass fan
- Whole frame two-component injection molding process



WY-109

Casement Window



PRODUCT PARAMETES

Water tightness	700 _{pa}
Air tightness	1.2 _{m³/(m·h)}
Wind pressure resistance	5K _{pa}
Sound insulation performance	35 _{dB}
U-Factor(U.S./1-P)	0.23
SHGC	0.20

Glass: Double Tempered Glass with argon gas
5mm+27A+5mm
(PVDF Aluminum Strip Between double glass)

Profile: 6063-T5 aluminum profile

Profile Thickness: 1.8MM

Frame width: 109MM

Handle: WEHAG Handle in Black and Silver

Hinge: WEHAG Hinge

Lock point: Customized Black Zinc Alloy Six Point Lock

Insulation strip: Standard DERCHI insulation strip

Opening Way: Outward Opening / Awning

Optional package: New 48 Pack/New 88 Pack

Sealing material: Standard Jiangyin Haida rubber strip

Available Size: Opening Panel (Width:350-750/Height:400-1600)

PRODUCT PROCESS

- Process of applying cross-sectional adhesive at a 45° angle to the outer frame and glass fan
- Whole frame two-component injection molding process



WY-109 **NARROW**

Casement Window

PRODUCT PARAMETES

Water tightness	700 _{pa}
Air tightness	1.2 _{m³/(m·h)}
Wind pressure resistance	5K _{pa}
Sound insulation performance	35 _{dB}
U-Factor(U.S./1-P)	0.23
SHGC	0.20

Glass: Double Tempered Glass with argon gas
5mm+27A+5mm
(PVDF Aluminum Strip Between double glass)

Profile: 6063-T5 aluminum profile

Profile Thickness: 1.8MM

Frame width: 109MM

Handle: WEHAG Handle in Black and Silver

Hinge: WEHAG Hinge

Lock point: Customized Black Zinc Alloy Six Point Lock

Insulation strip: Standard DERCHI insulation strip

Opening Way: Outward Opening / Awning

Optional package: New 48 Pack/New 88 Pack

Sealing material: Standard Jiangyin Haida rubber strip

Available Size: Opening Panel (Width:350-750/Height:400-1600)

PRODUCT PROCESS

- Process of applying cross-sectional adhesive at a 45° angle to the outer frame and glass fan
- Whole frame two-component injection molding process





WY-118

Casement Window



PRODUCT PARAMETES

Water tightness	700 _{pa}
Air tightness	1.2 _{m³/(m·h)}
Wind pressure resistance	5K _{pa}
Sound insulation performance	35 _{dB}
U-Factor(U.S./1-P)	0.23
SHGC	0.20

Glass: Double Tempered Glass with argon gas
5mm+27A+5mm
(PVDF Aluminum Strip Between double glass)

Profile: 6063-T5 aluminum profile

Profile Thickness: 1.8MM

Frame width: 118MM

Handle: WEHAG Handle in Black and Silver

Hinge: WEHAG Hinge

Lock point: Black Six Point Lock(Invention patent)

Insulation strip: Standard DERCHI insulation strip

Opening Way: Outward Opening / Awning

Optional package: New 48 Pack/New 88 Pack

Sealing material: Standard Jiangyin Haida rubber strip

Available Size: Opening Panel (Width:350-750/Height:400-1600)

PRODUCT PROCESS

- Process of applying cross-sectional adhesive at a 45° angle to the outer frame and glass fan
- Whole frame two-component injection molding process

WY-127

Casement Window



PRODUCT PARAMETES

Water tightness	700 _{pa}
Air tightness	1.2 _{m³/(m·h)}
Wind pressure resistance	5K _{pa}
Sound insulation performance	35 _{dB}
U-Factor(U.S./1-P)	0.23
SHGC	0.20

Glass: Double Tempered Glass with argon gas
5mm+27A+5mm
(PVDF Aluminum Strip Between double glass)

Profile: 6063-T5 aluminum profile

Profile Thickness: 1.8MM

Frame width: 127MM

Handle: WEHAG Handle in Black and Silver

Hinge: WEHAG Hinge

Lock point: Black Six Point Lock(Invention patent)

Insulation strip: Standard DERCHI insulation strip

Opening Way: Outward Opening / Awning

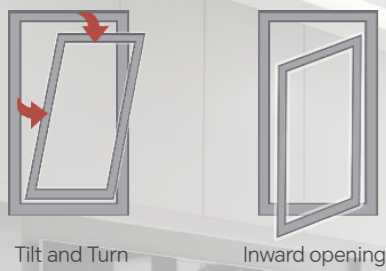
Optional package: New 48 Pack/New 88 Pack

Sealing material: Standard Jiangyin Haida rubber strip

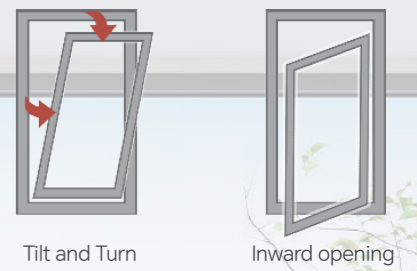
Available Size: Opening Panel (Width:350-750/Height:400-1600)

PRODUCT PROCESS

- Process of applying cross-sectional adhesive at a 45° angle to the outer frame and glass fan
- Whole frame two-component injection molding process



Tilt and Turn Inward opening



Tilt and Turn Inward opening



WN-85

Inwards opening window



PRODUCT PARAMETES

Water tightness	700 _{pa}
Air tightness	1.2 _{m³/(m·h)}
Wind pressure resistance	5K _{pa}
Sound insulation performance	35 _{dB}
U-Factor(U.S./1-P)	0.23
SHGC	0.20

Glass: Double Tempered Glass with argon ags
5mm+27A+5mm
(PVDF Aluminum Strip Between double glass)

Profile: 6063-T5 aluminum profile

Profile Thickness: 2.0MM

Frame width: 85MM

Handle: Customized non base safety Handle in Black and Sliver

Hinge: Customized flat open friction Hinge

Hardware: Customized version 180° Tilt and Turn Accessories

Insulation strip: Standard DERCHI insulation strip

Opening Way: Tilt and Turn/Inward opening

Optional package: New 48 Pack/New 88 Pack

Sealing material: EPDM rubber strip

Available Size: Opening Panel (Width:480-850/Height:600-1800)

PRODUCT PROCESS

- Open the fan and fix the position using internal and external rubber strip technology
- Built in diamond mesh wire pressing process
- Whole frame two-component injection molding process

WN-94

Inwards opening window



PRODUCT PARAMETES

Water tightness	700 _{pa}
Air tightness	1.2 _{m³/(m·h)}
Wind pressure resistance	5K _{pa}
Sound insulation performance	35 _{dB}
U-Factor(U.S./1-P)	0.23
SHGC	0.20

Glass: Double Tempered Glass with argon ags
5mm+27A+5mm
(PVDF Aluminum Strip Between double glass)

Profile: 6063-T5 aluminum profile

Profile Thickness: 2.0MM

Frame width: 94MM

Handle: WEHAG No pedestal handle(Black and Sliver)

Hardware: WEHAG 180° Tilt and Turn Accessories

Insulation strip: Standard DERCHI insulation strip

Opening Way: Tilt and Turn/Inward opening

Optional package: New 48 Pack/New 88 Pack

Sealing material: Standard Jiangyin Haida rubber strip

Available Size: Opening Panel (Width:480-850/Height:600-2400)

PRODUCT PROCESS

- Process of applying cross-sectional adhesive at a 45° angle to the outer frame and glass fan
- Whole frame two-component injection molding process



Tilt and Turn

Inward opening



Tilt and Turn

Inward opening

WN-96 **NARROW**

Inwards opening window



PRODUCT PARAMETES

Water tightness	700 _{pa}
Air tightness	1.2 _{m³/(m·h)}
Wind pressure resistance	5K _{pa}
Sound insulation performance	35 _{dB}
U-Factor(U.S./1-P)	0.23
SHGC	0.20

Glass: Double Tempered Glass with argon ags
5mm+27A+5mm
(PVDF Aluminum Strip Between double glass)

Profile: 6063-T5 aluminum profile

Profile Thickness: 2.0MM

Frame width: 96MM

Handle: WEHAG Handle in Black and Sliver

Hardware: WEHAG 180° Tilt and Turn Accessories

Insulation strip: Standard DERCHI insulation strip

Opening Way: Tilt and Turn/Inward opening

Optional package: New 48 Pack/New 88 Pack

Sealing material: EPDM rubber strip

Available Size: Opening Panel (Width:480-850/Height:600-2400)

PRODUCT PROCESS

- Process of applying cross-sectional adhesive at a 45° angle to the outer frame and glass fan
- Whole frame two-component injection molding process

WN-104

Inwards opening window



PRODUCT PARAMETES

Water tightness	700 _{pa}
Air tightness	1.2 _{m³/(m·h)}
Wind pressure resistance	5K _{pa}
Sound insulation performance	35 _{dB}
U-Factor(U.S./1-P)	0.23
SHGC	0.20

Glass: Double Tempered Glass with argon ags
5mm+27A+5mm
(PVDF Aluminum Strip Between double glass)

Profile: 6063-T5 aluminum profile

Profile Thickness: 2.0MM

Frame width: 104MM

Handle: WEHAG Handle in Black and Sliver

Hardware: WEHAG 180° Tilt and Turn Accessories

Insulation strip: Standard DERCHI insulation strip

Opening Way: Tilt and Turn/Inward opening

Optional package: New 48 Pack/New 88 Pack

Sealing material: Standard Jiangyin Haida rubber strip

Available Size: Opening Panel (Width:480-850/Height:600-2400)

PRODUCT PROCESS

- Process of applying cross-sectional adhesive at a 45° angle to the outer frame and glass fan
- Whole frame two-component injection molding process



WN-104A

Inwards opening window



PRODUCT PARAMETERS

Water tightness	700 _{pa}
Air tightness	1.2 _{m³/(m·h)}
Wind pressure resistance	5K _{pa}
Sound insulation performance	35 _{dB}
U-Factor(U.S./1-P)	0.23
SHGC	0.20

Glass: Double Tempered Glass with argon gas
5mm+27A+5mm
(PVDF Aluminum Strip Between double glass)

Profile: 6063-T5 aluminum profile

Profile Thickness: 2.0MM

Frame width: 104MM

Handle: WEHAG Handle in Black and Silver

Hardware: WEHAG 180° Tilt and Turn Accessories

Insulation strip: Standard DERCHI insulation strip

Opening Way: Tilt and Turn/Inward opening

Optional package: New 48 Pack/New 88 Pack

Sealing material: Standard Jiangyin Haida rubber strip

Available Size: Opening Panel (Width:480-850/Height:600-2400)

PRODUCT PROCESS

- Process of applying cross-sectional adhesive at a 45° angle to the outer frame and glass fan
- Whole frame two-component injection molding process



WN-112

Inwards opening window



PRODUCT PARAMETERS

Water tightness	700 _{pa}
Air tightness	1.2 _{m³/(m·h)}
Wind pressure resistance	5K _{pa}
Sound insulation performance	35 _{dB}
U-Factor(U.S./1-P)	0.23
SHGC	0.20

Glass: Double Tempered Glass with argon gas
5mm+27A+5mm
(PVDF Aluminum Strip Between double glass)

Profile: 6063-T5 aluminum profile

Profile Thickness: 2.0MM

Frame width: 112MM

Handle: WEHAG Handle in Black and Silver

Hardware: WEHAG 180° Tilt and Turn Accessories

Insulation strip: Standard DERCHI insulation strip

Opening Way: Tilt and Turn/Inward opening

Optional package: New 48 Pack/New 88 Pack

Sealing material: Standard Jiangyin Haida rubber strip

Available Size: Opening Panel (Width:480-850/Height:600-2400)

PRODUCT PROCESS

- Process of applying cross-sectional adhesive at a 45° angle to the outer frame and glass fan
- Whole frame two-component injection molding process



WN-114

Inwards opening window

PRODUCT PARAMETES

Water tightness	700 _{pa}
Air tightness	1.2 _{m³/(m·h)}
Wind pressure resistance	5K _{pa}
Sound insulation performance	35 _{dB}
U-Factor(U.S./1-P)	0.32
SHGC	0.25

Glass: Double Tempered Glass with argon gas
6mm+16A+6mm
(PVDF Aluminum Strip Between double glass)

Profile: 6063-T5 aluminum profile

Profile Thickness: 2.0MM

Frame width: 114MM

Handle: WEHAG Handle in Black and Silver

Hardware: WEHAG 90° Tilt and Turn Accessories

Insulation strip: Standard DERCHI insulation strip

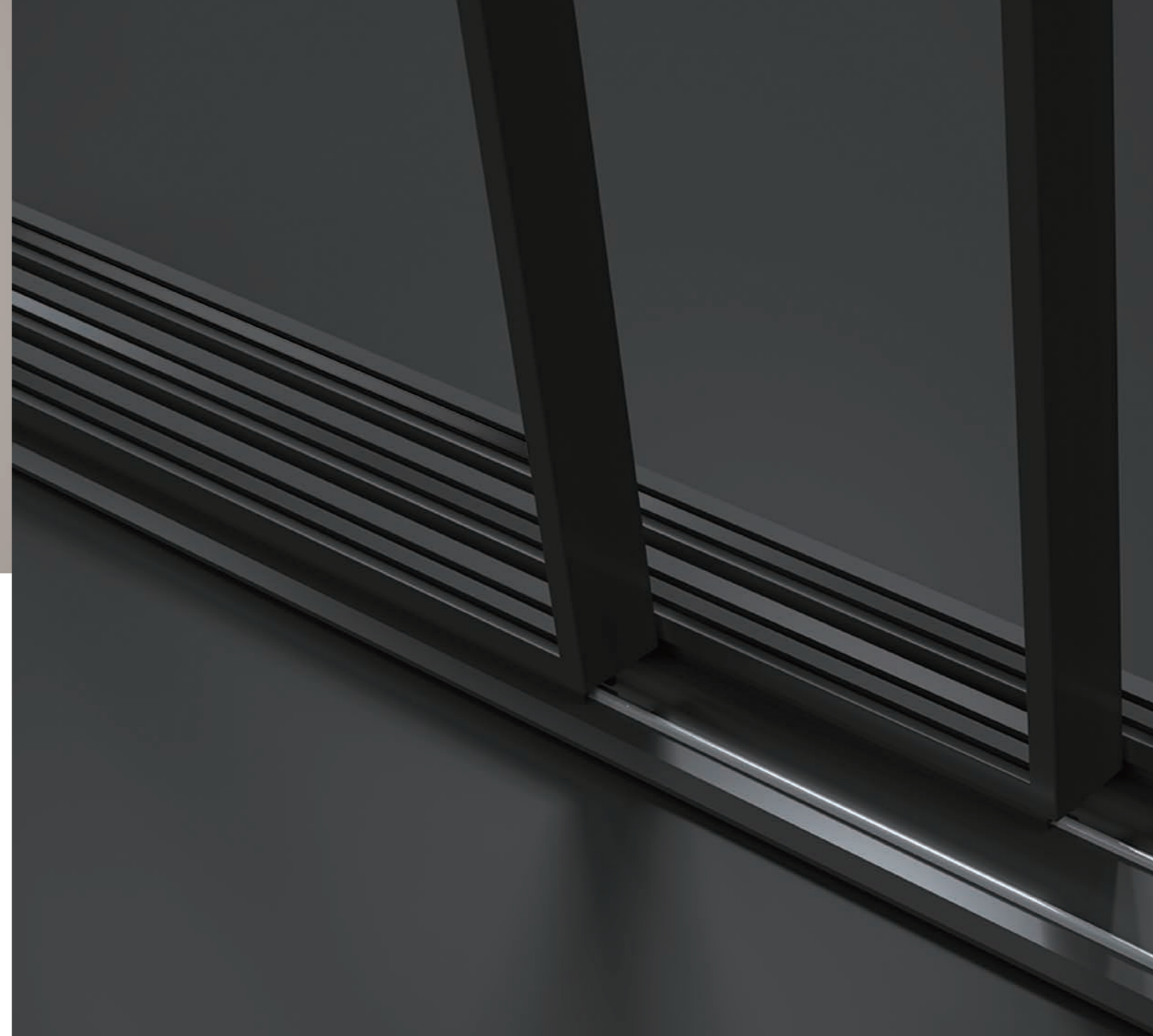
Opening Way: Tilt and Turn/Inward opening

Sealing material: Standard Jiangyin Haida rubber strip

Available Size: Opening Panel (Width:510-850/Height:600-2400)

PRODUCT PROCESS

- Process of applying cross-sectional adhesive at a 45° angle to the outer frame and glass fan
- Whole frame two-component injection molding process



SLIDING WINDOW SLIDING DOOR SERIES

- Three-way sealing design isobaric principle drainage
- National utility patent-six-point lock on all sides
- National Practical Patent-Built-in Diamond Wire Pressing Line



Two Tracks

Three Tracks



Four Tracks

Five Tracks



WT-94

Thermal Break Sliding Window

PRODUCT PARAMETERS

Water tightness	450 pa
Air tightness	4.5 m ³ /(m·h)
Wind pressure resistance	5K pa
Sound insulation performance	30 dB
U-Factor(U.S./1-P)	0.32
SHGC	0.25

Glass: Double Tempered Glass with argon gas
5mm+12A+5mm
(PVDF Aluminum Strip Between double glass)

Profile: 6063-T5 aluminum profile

Profile Thickness: 1.8MM

Frame width: Two Tracks:94MM / Three Tracks:121MM

FLUSH LOCK: Side Mounted Hidden Automatic Hook Lock

LOCK POINT: Automatic Hook Lock

Insulation strip: Standard DERCHI insulation strip

Opening Way: Two Tracks / Three Tracks

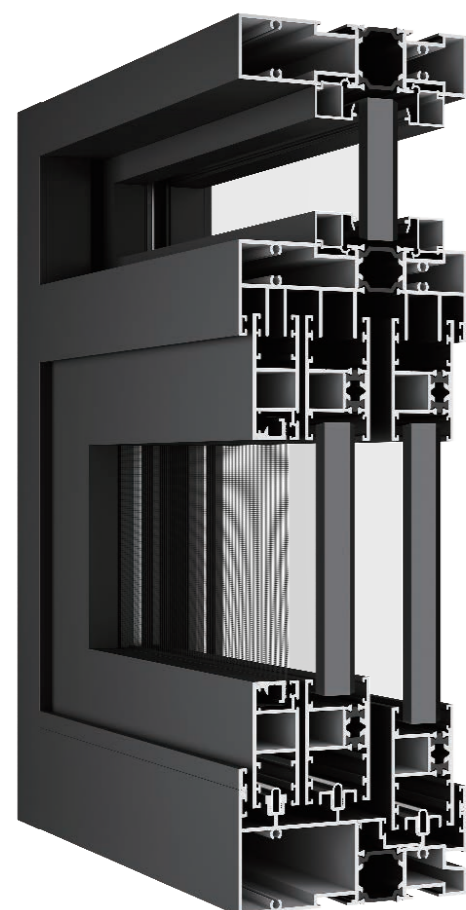
Optional package: New 48 Pack/New 88 Pack

Sealing material: EPDM rubber strip

Available Size: Opening Panel (Width:350-1100/Height:500-2100)

PRODUCT PROCESS

- The overall use of internal and external gluing process
- The track adopts an internal high and external low high low track design
- Embedded design of window sash material
- The exterior design of the window sash material structure does not have a cavity



WT-95

Thermal Break Sliding Window

PRODUCT PARAMETERS

Water tightness	450 pa
Air tightness	4.5 m ³ /(m·h)
Wind pressure resistance	5K pa
Sound insulation performance	30 dB
U-Factor(U.S./1-P)	0.32
SHGC	0.25

Glass: Double Tempered Glass with argon gas
5mm+12A+5mm
(PVDF Aluminum Strip Between double glass)

Profile: 6063-T5 aluminum profile

Profile Thickness: 1.8MM

Frame width: Four tracks:95MM/Five tracks:133MM

FLUSH LOCK: Side mounted concealed automatic lock

Hardware: Customized silent pulley

Insulation strip: Standard DERCHI insulation strip

Opening Way: Four tracks/Five tracks

Sealing material: Standard Jiangyin Haida rubber strip

Available Size: Opening Panel (Width:500-2000/Height:500-1400)

PRODUCT PROCESS

- The track adopts an internal high and external low high low track design
- Embedded design of window sash material
- The glass fan adopts a double row wheel design
- Strengthen the anti drop structure of handrails





Two Tracks

Three Tracks



Translating



WT-123

Sliding window



PRODUCT PARAMETERS

Water tightness	450 pa
Air tightness	4.5 m ³ /(m·h)
Wind pressure resistance	5K pa
Sound insulation performance	30 dB
U-Factor(U.S./1-P)	0.32
SHGC	0.25

Glass: Double Tempered Glass with argon gas
5mm+12A+5mm
(PVDF Aluminum Strip Between double glass)

Profile: 6063-T5 aluminum profile

Profile Thickness: 1.8MM

Frame width: 123MM

FLUSH LOCK: Side Mounted Hidden Automatic Hook Lock

LOCK POINT: Automatic Hook Lock

Insulation strip: Standard DERCHI insulation strip

Opening Way: Two Tracks / Three Tracks

Sealing material: EPDM rubber strip

Available Size: Opening Panel (Width:350-1100/Height:500-2100)

PRODUCT PROCESS

- The overall use of internal and external gluing process
- The track adopts an internal high and external low high low track design
- Embedded design of window sash material
- The exterior design of the window sash material structure does not have a cavity

W-G41



Translating Sealed window



PRODUCT PARAMETERS

Water tightness	700 pa
Air tightness	1.2 m ³ /(m·h)
Wind pressure resistance	5K pa
Sound insulation performance	35 dB
U-Factor(U.S./1-P)	0.27
SHGC	0.22

Glass: Double Tempered Glass with argon gas
5mm+20A+5mm
(PVDF Aluminum Strip Between double glass)

Profile: 6063-T5 aluminum profile

Profile Thickness: frame 2.0MM ,sash 2.2MM

Frame width: 132MM

Handle: YALE There is a base handle

Hardware: YALE Side pressure hardware

Insulation strip: Standard BAIYUNYILE insulation strip

Opening Way: One opening and one fixing/Two opening and one fixing/
Two opening and two fixing/Fixed up and down

Sealing material: EPDM rubber strip

Available Size: Opening Panel (Width:600-1500/Height:100-2600)

PRODUCT PROCESS

- Open the fan and fix the position using internal and external rubber strip technology



83

Single hung window



PRODUCT PARAMETES

Water tightness	350 _{pa}
Air tightness	4.5 _{m³/(m·h)}
Wind pressure resistance	5K _{pa}
Sound insulation performance	30 _{dB}
U-Factor(U.S./1-P)	0.39
SHGC	0.25

Glass: Double Tempered Glass
5mm+9A+5mm

Profile: 6063-T5 aluminum profile

Profile Thinckness: 1.5MM

Hardware: Caldwell

Screen: External detachable screen window

Opening Way: Upward/down pulling

Suggestion Size: Max: 1000mm*2000mm Min:300mm*600mm



105

Thermal Break
Double Hung Window



PRODUCT PARAMETES

Water tightness	350 _{pa}
Air tightness	4.5 _{m³/(m·h)}
Wind pressure resistance	5K _{pa}
Sound insulation performance	30 _{dB}
U-Factor(U.S./1-P)	0.39
SHGC	0.25

Glass: Double Tempered Glass
5mm+9A+5mm

Profile: 6063-T5 aluminum profile

Profile Thinckness: 1.6MM

Hardware: Caldwell

Screen: External detachable screen

Opening Way: Upward/down pulling

Suggestion Size: Max: 1000mm*2400mm Min:300mm*600mm



Four Tracks

Five Tracks



Two Tracks

Three Tracks



WT-105B

Sling Doors



PRODUCT PARAMETES

Water tightness	450 _{pa}
Air tightness	4.5 _{m³/(m·h)}
Wind pressure resistance	5K _{pa}
Sound insulation performance	30 _{dB}
U-Factor(U.S./1-P)	0.39
SHGC	0.25

Glass: Double Tempered Glass with argon ags
5mm+18A+5mm
(PVDF Aluminum Strip Between double glass)

Profile: 6063-T5 aluminum profile

Profile Thickness: frame 1.3MM , door leaf 1.2MM

Frame width: Four tracks:105MM/Five tracks:161MM

Handle: HOPPE One straight lock

Lock point: 304 Stainless Steel Single Hook Lock

Opening Way: Four Tracks / Five Tracks

Optional package: New 47 Pack / 70 Pack / 75 Pack

Sealing material: EPDM rubber strip

Available Size: Opening Panel (Width:600-1400/Height:800-2400)

PRODUCT PROCESS

- The entire window adopts internal and external gluing technology
- Embedded Design

WT-135D

Sliding door



PRODUCT PARAMETES

Water tightness	350 _{pa}
Air tightness	3.0 _{m³/(m·h)}
Wind pressure resistance	4.5K _{pa}
Sound insulation performance	32 _{dB}
U-Factor(U.S./1-P)	0.38
SHGC	0.22

Glass: Double Tempered Glass with argon ags
5mm+20A+5mm
(PVDF Aluminum Strip Between double glass)

Profile: 6063-T5 aluminum profile

Profile Thickness: frame 1.8MM , door leaf 1.6MM

Frame width: Two tracks 135mm / Three tracks 205mm

Handle: HOPPE Aluminum alloy hook lock/clasp

Hardware: 304 stainless steel single hook lock point lock seat

Optional package: New 47 Pack / 70 Pack / 75 Pack / 100 Pack

Opening Way: Two tracks/Three tracks

Sealing material: EPDM rubber strip

Available Size: Opening Panel (Width:580-1500/Height:800-2800)

PRODUCT PROCESS

- The overall use of internal and external gluing process
- Embedded design of fan material
- The lock point lock seat is made of stainless steel material
- Floor drain drainage design



Two Tracks

Three Tracks



Two Tracks

Three Tracks



WT-135

Sling Doors



PRODUCT PARAMETERS

Water tightness	300 pa
Air tightness	4.5 m ³ /(m·h)
Wind pressure resistance	4.5K pa
Sound insulation performance	30 dB
U-Factor(U.S./1-P)	0.28
SHGC	0.22

Glass: Double Tempered Glass with argon gas
5mm+27A+5mm
(PVDF Aluminum Strip Between double glass)

Profile: 6063-T5 aluminum profile

Profile Thickness: frame 2.2MM , door leaf 1.8MM

Frame width: Two tracks 135mm / Three tracks 205mm

Gasket: China Brand JIANGYIN HAIDA

Opening Way: Two Tracks / Three Tracks

Optional package: New 47 Pack/70 Pack/75 Pack/100 Pack

Sealing material: EPDM rubber strip, silicized wool strip

Flush lock: PAG Aluminum Hook Lock

Lock point: 304 Stainless Steel Single Hook Lock

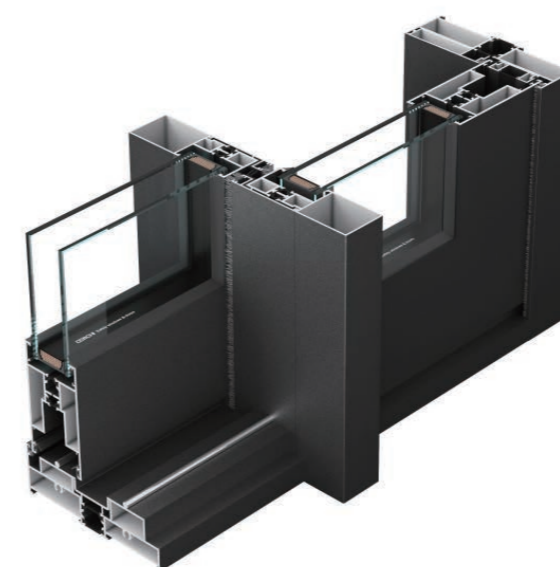
Available Size: Opening Panel (Width:580-1500/Height:800-2800)

PRODUCT PROCESS

- The overall use of internal and external gluing process
- Yarn fan thread pressing structure
- Fan material simple style design
- Embedded design of fan material
- The overlapping part of the hook cover is designed with a sealing strip

WT-143

Sliding door



PRODUCT PARAMETERS

Water tightness	300 pa
Air tightness	4.5 m ³ /(m·h)
Wind pressure resistance	4.5K pa
Sound insulation performance	30 dB
U-Factor(U.S./1-P)	0.28
SHGC	0.20

Glass: Double Tempered Glass with argon gas
5mm+27A+5mm
(PVDF Aluminum Strip Between double glass)

Profile: 6063-T5 aluminum profile

Profile Thickness: 2.2MM

Frame width: Two tracks 143mm / Three tracks 217mm

Handle: HOPPE Aluminum alloy hook lock/clasp

Hardware: 304 stainless steel single hook lock point lock seat

Insulation strip: Standard DERCHI insulation strip

Optional package: New 47 Pack / 70 Pack / 75 Pack / 100 Pack

Opening Way: Two tracks/Three tracks

Sealing material: EPDM rubber strip

Available Size: Opening Panel (Width:600-2500/Height:800-3000)

PRODUCT PROCESS

- The overall use of internal and external gluing process
- Embedded design of fan material
- Enhanced mid lift design
- Yarn fan thread pressing structure



Two Tracks

Three Tracks



Two Tracks

Three Tracks



WT-150

Heavy Sliding door



PRODUCT PARAMETERS

Water tightness	450 _{pa}
Air tightness	4.5 _{m³/(m·h)}
Wind pressure resistance	4.5K _{pa}
Sound insulation performance	35 _{dB}
U-Factor(U.S./1-P)	0.28
SHGC	0.20

Glass: Double Tempered Glass with argon gas
6mm+25A+6mm
(PVDF Aluminum Strip Between double glass)

Profile: 6063-T5 aluminum profile

Profile Thickness: frame 2.0MM , door leaf 3.0MM

Frame width: Two tracks 135mm / Three tracks 233mm/Four tracks 316mm

LOCK POINT: Panoramic door dedicated one letter lock

Hardware: Panoramic door integrated handle

Insulation strip: Standard DERCHI insulation strip

Opening Way: Two Tracks / Three Tracks/Four tracks

Sealing material: EPDM rubber strip

Available Size: Opening Panel (Width:1300-4000/Height:2000-6000)

PRODUCT PROCESS

- Design of Embedded Micro Seam Linear Track
- Design of high rail sunken hidden drainage
- The overlap is sealed with a strip of wool
- Seal the hooked edge with sealing tape

103 **NARROW**

Sliding door



PRODUCT PARAMETERS

Water tightness	300 _{pa}
Air tightness	4.5 _{m³/(m·h)}
Wind pressure resistance	3K _{pa}
Sound insulation performance	30 _{dB}
U-Factor(U.S./1-P)	0.39
SHGC	0.25

Glass: 8MM tempered glass

Profile: 6063-T5 aluminum profile

Profile Thickness: frame 1.3MM , door leaf 2.0MM

Frame width: Two Tracks:103MM / Three Tracks:149MM

Handle: Extremely narrow specialized aluminum alloy handle

Hardware: Customized silent two wheel pulley

Opening Way: Two Tracks / Three Tracks

Optional package: New 32 Pack

Sealing material: EPDM rubber strip

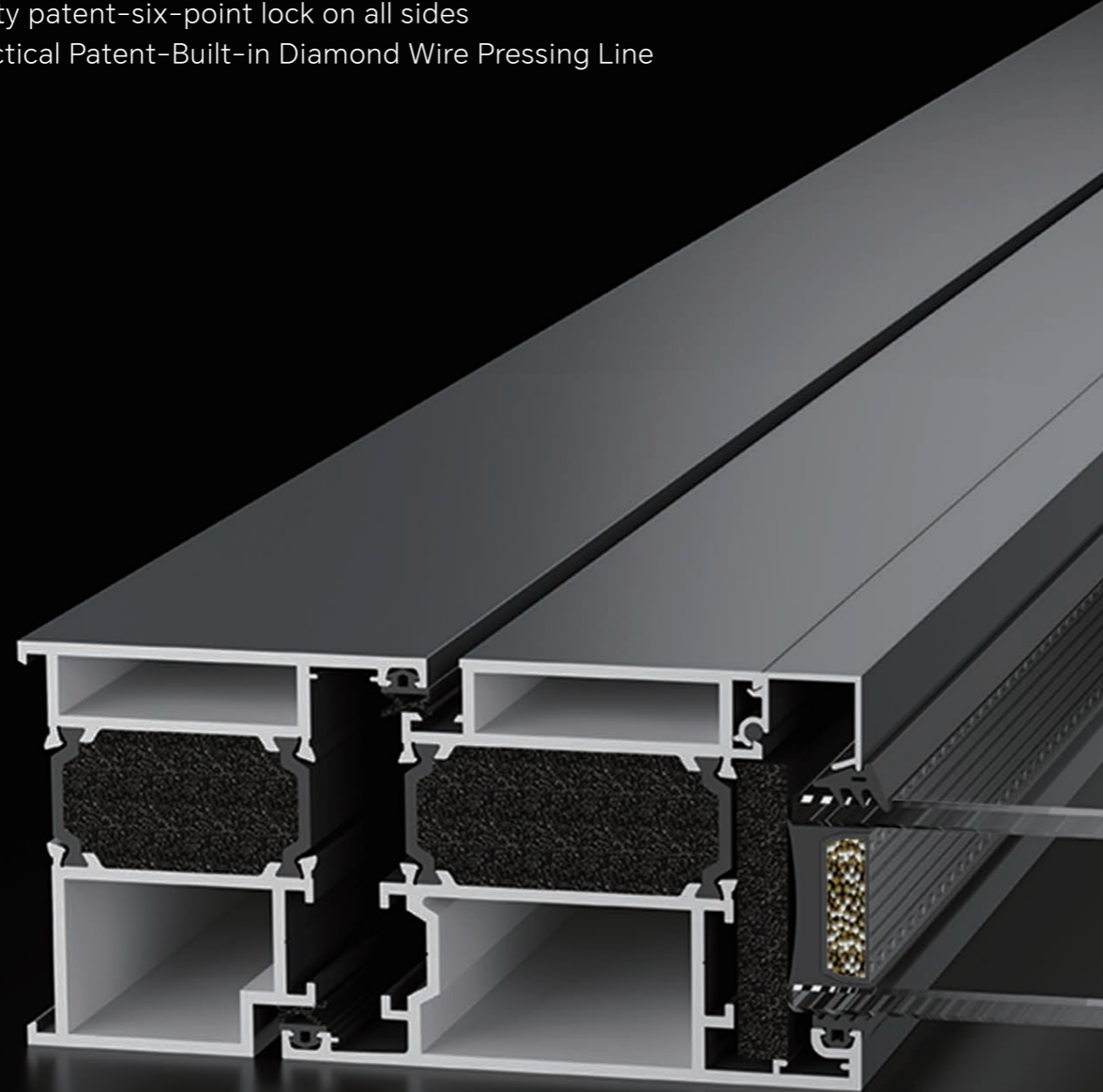
Available Size: Opening Panel (Width:580-1200/Height:800-2600)

PRODUCT PROCESS

- Dark glue process
- Narrow fan design

SWING DOOR FOLDING DOOR SERIES

- Three-way sealing design isobaric principle drainage
- National utility patent-six-point lock on all sides
- National Practical Patent-Built-in Diamond Wire Pressing Line



54 **NARROW** Swing door



PRODUCT PARAMETERS

Water tightness	300 _{pa}
Air tightness	5 _{m³/(m·h)}
Wind pressure resistance	3K _{pa}
Sound insulation performance	37 _{dB}
U-Factor(U.S./1-P)	0.39
SHGC	0.25

Glass: double glazing:5mm+12A+5mm
Single Glazed:8MM tempered glass

Profile: 6063-T5 aluminum profile

Profile Thickness: frame 1.4MM , door leaf 2.0MM

Frame width: 54MM

Handle: DERCHI custom handle

Hardware: DERCHI customized hinges

Optional package: New 32 Pack

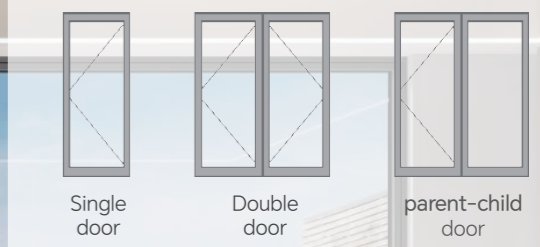
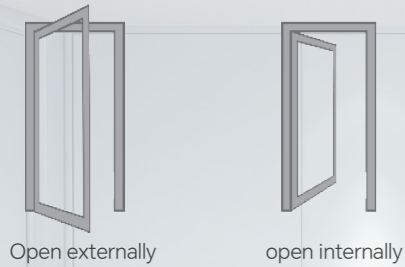
Opening Way: Open externally and open internally

Sealing material: EPDM rubber strip

Available Size: Opening Panel (Width:350-850/Height:400-2400)

PRODUCT PROCESS

- Internal and external gluing process



WP-50

Swing door



PRODUCT PARAMETES

Water tightness	300 _{pa}
Air tightness	5 _{m³/(m·h)}
Wind pressure resistance	3K _{pa}
Sound insulation performance	37 _{dB}
U-Factor(U.S./1-P)	0.39
SHGC	0.25

Glass: double glazing:5mm+12A+5mm
Single Glazed:8MM tempered glass

Profile: 6063-T5 aluminum profile

Profile Thickness: frame 1.45MM , door leaf 1.2MM

Frame width: 54MM

Handle: DERCHI custom handle

Hardware: DERCHI customized hinges

Optional package: New 32 Pack

Opening Way: Open externally and open internally

Sealing material: EPDM rubber strip

Available Size: Opening Panel (Width:600-850/Height:1800-2500)

PRODUCT PROCESS

- Opening the fan adopts gluing process
- fixing position adopts pressing glue strip process

WP-103

Interior Swing door



PRODUCT PARAMETES

Water tightness	450 _{pa}
Air tightness	4.5 _{m³/(m·h)}
Wind pressure resistance	5K _{pa}
Sound insulation performance	30 _{dB}
U-Factor(U.S./1-P)	0.28
SHGC	0.20

Glass: Double Tempered Glass with argon gas
5mm+27A+5mm
(PVDF Aluminum Strip Between double glass)

Profile: 6063-T5 aluminum profile

Profile Thickness: 2.0MM

Frame width: 103MM

Handle: ShenZhen HOPPE double-sided handle

Hardware: ShenZhen HOPPE column hinge

Insulation strip: Standard DERCHI insulation strip

Optional package: New 48 Pack/New 88 Pack

Opening Way: Single door, double door, parent-child door

Sealing material: EPDM rubber strip

Available Size: Opening Panel (Width:350-1100/Height:800-2800)

PRODUCT PROCESS

- Opening the fan adopts gluing process
- fixing position adopts pressing glue strip process



WZ-78

Folding door

PRODUCT PARAMETES

Water tightness	450 pa
Air tightness	1.8 m ³ /(m·h)
Wind pressure resistance	4.5K pa
Sound insulation performance	30 dB
U-Factor(U.S./1-P)	0.38
SHGC	0.22

Glass: Double Tempered Glass with argon ags
5mm+27A+5mm
(PVDF Aluminum Strip Between double glass)

Profile: 6063-T5 aluminum profile

Profile Thinckness: 1.6MM

Frame width: 78MM

Handle: Kerssemberg Handle in Black or Sliver

Hinge: Kerssemberg Hinge in Black or Sliver

Lock point: Kerssemberg Specialized locking point

Insulation strip: Standard BAIYUNYILE insulation strip

Optional package: New 47 Pack/70 Pack/75 Pack/100 Pack

Sealing material: EPDM rubber strip

Available Size: Opening Panel (Width:500-800/Height:1000-2800)

PRODUCT PROCESS

· Adopting internal and external gluing process



WZ-80

Folding door



PRODUCT PARAMETES

Water tightness	350 pa
Air tightness	1.8 m ³ /(m·h)
Wind pressure resistance	4.5K pa
Sound insulation performance	35 dB
U-Factor(U.S./1-P)	0.38
SHGC	0.22

Glass: Double Tempered Glass with argon ags
5mm+20A+5mm
(PVDF Aluminum Strip Between double glass)

Profile: 6063-T5 aluminum profile

Profile Thinckness: 2.0MM

Frame width: 80MM

Handle: CMECH Handle in Black or Sliver

Hardware: CMECH Hinge in Black or Sliver

Lock point: CMECH Specialized locking point

Insulation strip: Standard BAIYUNYILE insulation strip

Optional package: New 47 Pack/70 Pack/75 Pack/100 Pack

Sealing material: JIANGYINHAIDA rubber strip

Available Size: Opening Panel (Width:500-850/Height:1000-3000)

PRODUCT PROCESS

· Adopting internal and external gluing process





Rotate



OTHER PRODUCT SERIES



W-Z3

Pivot door



PRODUCT PARAMETES

Water tightness	700 _{pa}
Air tightness	1.2 _{m³/(m·h)}
Wind pressure resistance	5K _{pa}
Sound insulation performance	35 _{dB}
U-Factor(U.S./1-P)	0.38
SHGC	0.22

Glass: Double Tempered Glass with argon gas
8mm+21A+8mm
(PVDF Aluminum Strip Between double glass)

Profile: 6063-T5 aluminum profile

Profile Thickness: frame 2.5MM , door leaf 3.0MM

Frame width: 129MM

Handle: Guangqi comes with its own armrest design

Hardware: Customized central axis accessories

Opening Way: Rotate and open horizontally

Sealing material: EPDM rubber strip

Available Size: Central axis door Opening Panel
(Width:900-2700/Height:2350-4500)
Pivot door Opening Panel
(Width:900-1350/Height:2350-4500)

PRODUCT PROCESS

· Adopting internal and external gluing process



120

Sun Room

PRODUCT PARAMETES

Glass: Roof:5mm+1.14PVB+5mm
Side : 5mm+9A+5mm

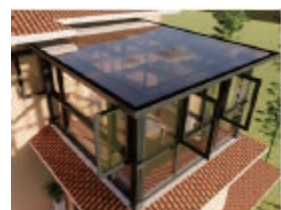
Profile: 6063-T5 aluminum profile

Profile Thickness: 3.0MM

Available Size: The maximum single grid on the top is 1square meter

OTHER OPTIONAL ITEMS

- Select electric sunroof and steel gauze integrated electric sunroof
- Choose 150*150 Roman columns
- Use 27A electric sunshade system (5+27A+5+1.14PVB+5)
- H-type remote control, H-type receiver, H-type 2A transformer



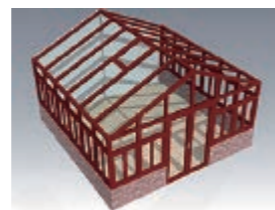
Flat top



Inclined roof



Diamond top



Triangular roof



Arc top



138

Sun Room

PRODUCT PARAMETES

Glass: Roof:5mm+1.14PVB+5mm
Side : 5mm+9A+5mm

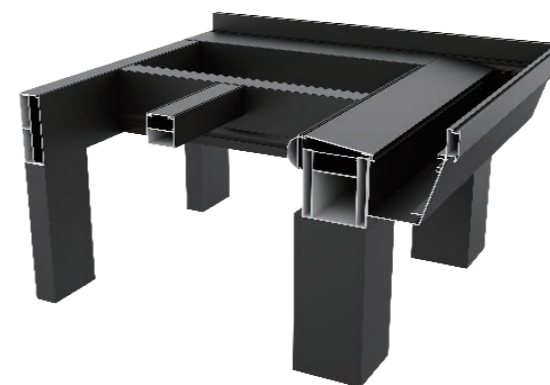
Profile: 6063-T5 aluminum profile

Profile Thickness: 3.0MM

Available Size: The maximum single grid on the top is 1square meter

OTHER OPTIONAL ITEMS

- Select electric sunroof and steel gauze integrated electric sunroof
- Choose 150*150 Roman columns
- Use 27A electric sunshade system (5+27A+5+1.14PVB+5)
- H-type remote control, H-type receiver, H-type 2A transformer



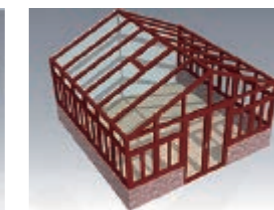
Flat top



Inclined roof



Diamond top



Triangular roof



Arc top



150

Sun Room



PRODUCT PARAMETES

Glass: Roof:5mm+1.14PVB+5mm
Side : 5mm+9A+5mm

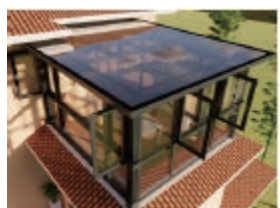
Profile: 6063-T5 aluminum profile

Profile Thickness: 4.0MM

Available Size: The maximum single grid on the top is 1square meter

OTHER OPTIONAL ITEMS

- Select electric sunroof and steel gauze integrated electric sunroof
- Choose 150*150 Roman columns
- Use 27A electric sunshade system (5+27A+5+1.14PVB+5)
- H-type remote control, H-type receiver, H-type 2A transformer



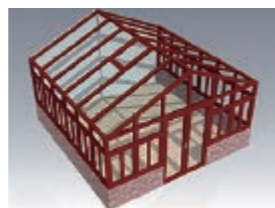
Flat top



Inclined roof



Diamond top



Triangular roof

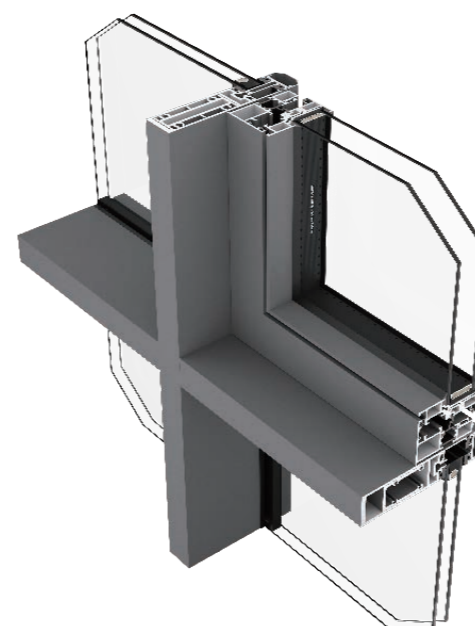


Arc top

W-150

NARROW

Curtain wall series



PRODUCT PARAMETES

Water tightness	500 _{pa}
Air tightness	1.8 _{m³/(m·h)}
Wind pressure resistance	4K _{pa}
Sound insulation performance	40 _{dB}
U-Factor(U.S./1-P)	0.39
SHGC	0.22

Glass: Double Tempered Glass with argon ags
6mm+12A+6mm(LOW-E)
(PVDF Aluminum Strip Between double glass)

Profile: 6063-T5 aluminum profile

Profile Thickness: 3.0MM

Frame width: 207MM

Handle: WEHAG Side lock handle

Hardware: WEHAG Lock point lock seat

Insulation strip: Standard DERCHI insulation strip

Sealing material: EPDM rubber strip

Available Size: Opening Panel (Width:600-1400/Height:800-1400)

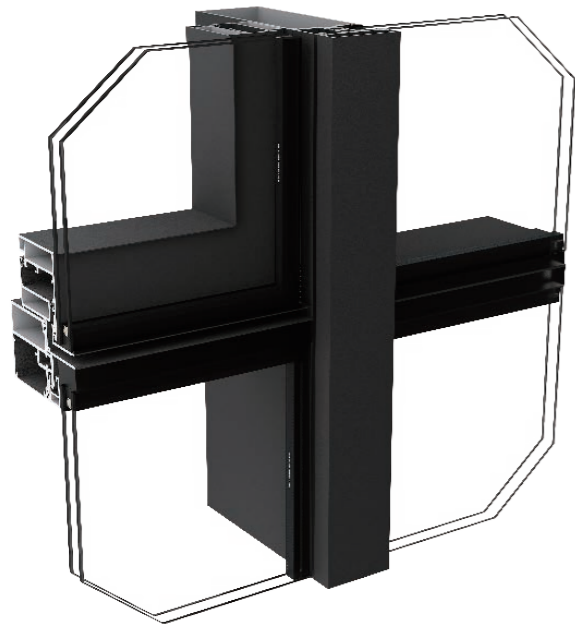
PRODUCT PROCESS

- Extremely narrow design
- multi-point locking structure
- structural adhesive used for glass panels



W-150

Curtain wall series



PRODUCT PARAMETES

Water tightness	500 _{pa}
Air tightness	1.8 _{m³/(m·h)}
Wind pressure resistance	4K _{pa}
Sound insulation performance	40 _{dB}
U-Factor(U.S./1-P)	0.39
SHGC	0.22

Glass: Double Tempered Glass with argon gas
6mm+12A+6mm(LOW-E)
(PVDF Aluminum Strip Between double glass)

Profile: 6063-T5 aluminum profile

Profile Thickness: 3.0MM

Frame width: 205MM

Handle: KINLONG Handle

Hardware: Multi point lock with limit

Insulation strip: Standard BAIYUNYILE insulation strip

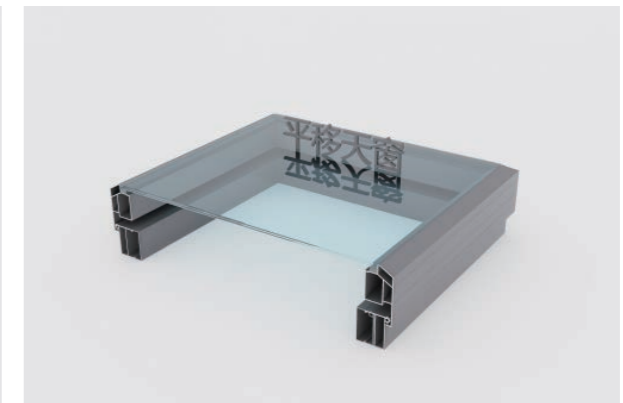
Sealing material: EPDM rubber strip

Available Size: Opening Panel (Width:700-1500/Height:800-1500)

PRODUCT PROCESS

- Vertical visible and horizontal hidden structure
- The glass panel adopts structural adhesive
- The same brand of weather resistant adhesive as the structural adhesive is used between glass and glass

Skylight



Product type	Manual Sunroof	Power sunroof	Move the sunroof horizontally
Profile specifications	70*100*1.8mm	70*100*1.8mm	80*230*3.0mm
Processing technology	Seamless welding	Seamless welding	Seamless welding
Customized size	Single sash ≤ 1.5 m ²	Single sash ≤ 1.5 m ²	Width ≤ 4 meters
Glass configuration	Glass groove 25mm	Glass groove 25mm	Glass groove 27mm
Installation angle	0-90°	0-90°	0-10°
Standard configuration	Hardware stainless steel hinges/handles	External motor, remote control	Built in hidden motor and remote control

SHOWER ROOM SERIES



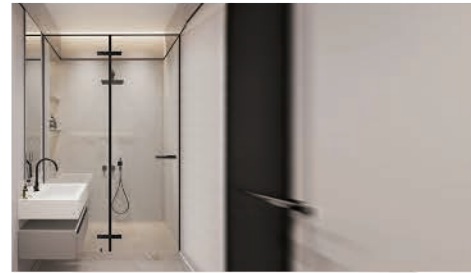
D851 Double sliding door



D853 One solid one live shower room



D854 One solid two linkage shower room



D856 One fixed one open shower room



D858 Two solid one live shower room



D859 T-shaped rotating shaft shower room



D860 Diamond hinge shower enclosure



D864 Diamond shaped sliding door shower room



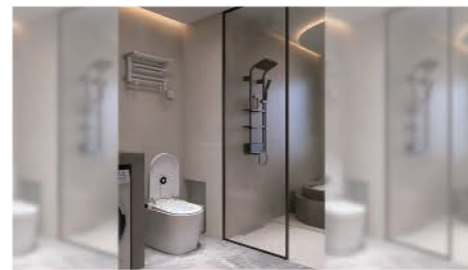
D861 Diamond shower room



D865 Sector shower room



D866 One dual purpose shower room



D867 Fixed frame shower room

PRODUCT PARAMETES

DESCRIPTION	Materials	304 stainless steel
	Color	Mirror light,Dumb gray,Gun Ash
	Hanger pulley	304 fine-cast double balance wheel
	Glass Thickness	8mm / 10mm Clear Glass
	Standard Height	2000mm
	Specification	Non-standard custom

STAINLESS STEEL COLOR PLATE



Matt black

Titanium wire drawing

Gun Ash

Mirror light

PVC SOLID WATER RETAINING STRIP



Matt black

Gun Ash

Cloud pulls gray

China black

China black

ENTRANCE DOOR



Stars and rivers



The stars are shining



Moonlight shadow



Grand picture



Reflections



The clouds



Longwei



A thousand miles of rivers and mountains



Dragon scale



Mori time

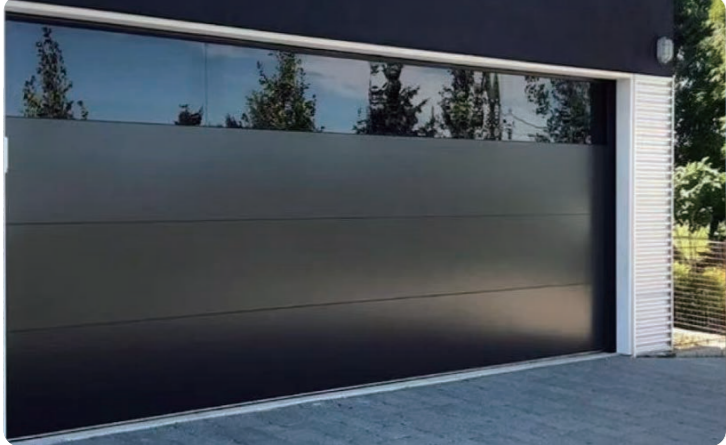
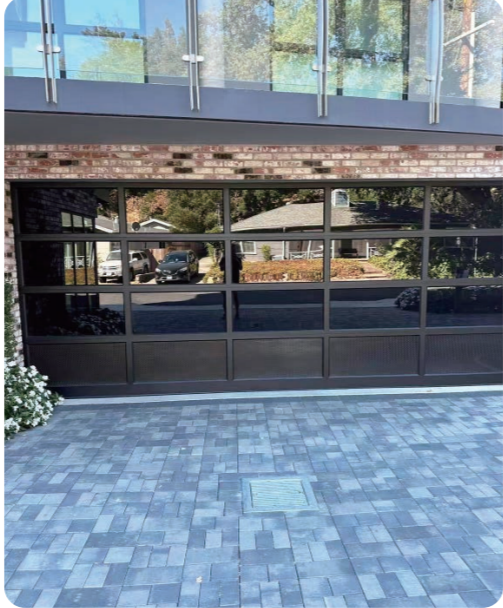


Purple Qis coming from the east



Kim was in full joy

GARAGE DOOR



PRODUCT PARAMETES

SERIES	Automatic Garage Doors
PROFILE THICKNESS	2.5mm aluminum profile thickness
CONTROL MODEL	Remote Control (Standard),Manual
OPENER	800N/1000N/1200N/1500N/1800N (Based on doorway's size)
GLASS	5mm tempered glass ; Clear glass ; Frosted Glass (Standard)
HINGES	2.5mm plate galvanized steel
ROLLERS	Standard (2" or 3"), Heavy Duty (2" or 3")





ALUMINUM SHUTTER

ALUMINUM SHUTTER

PRODUCT PARAMETES

DESCRIPTION	ALUMINUM THICKNESS	1.4mm
-------------	--------------------	-------

PRODUCT PARAMETES

DESCRIPTION	ALUMINUM THICKNESS	1.4mm
	GLASS STANDARD	Double glazing 5mm+12A+5mm

GLASS LOUVRE

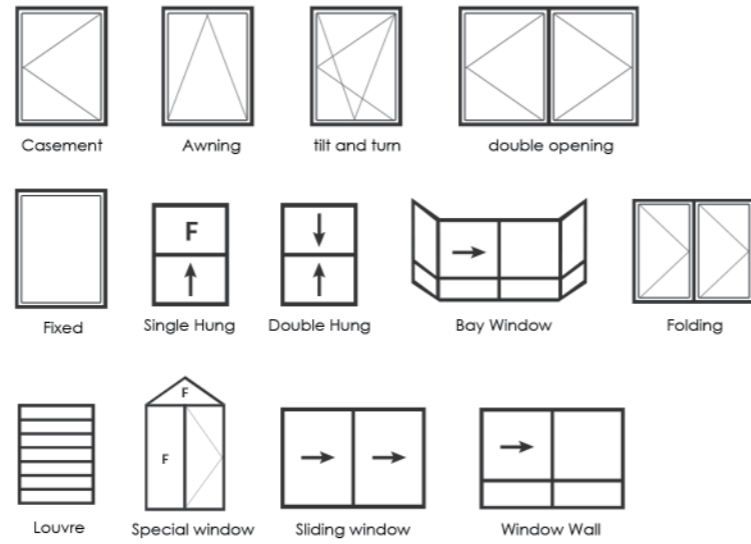
GLASS LOUVRE



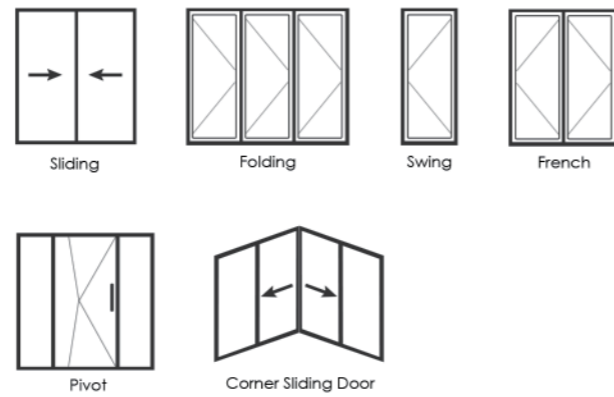
CUSTOMIZE ANY ALUMINUM DOORS AND WINDOWS DESIGN

Please send your drawings and requirements and we will customize them for you

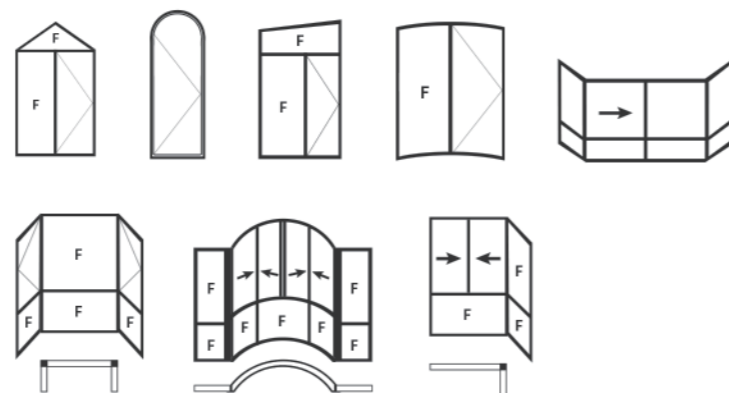
WINDOW



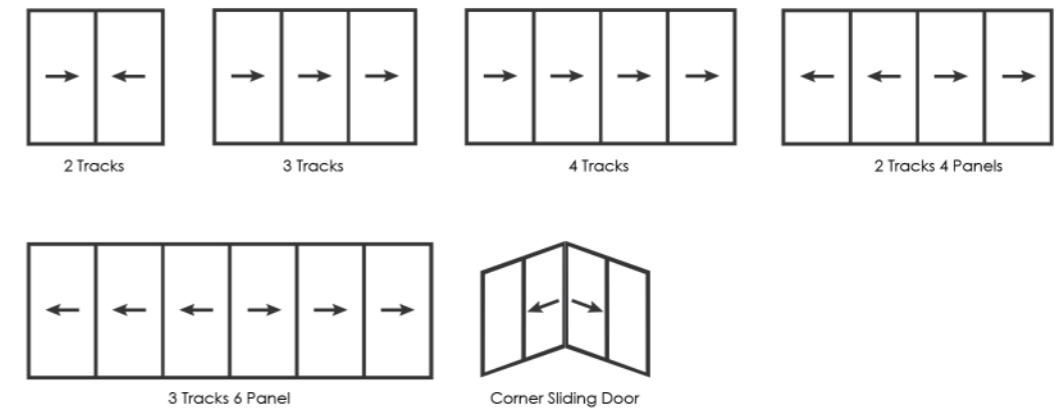
DOOR



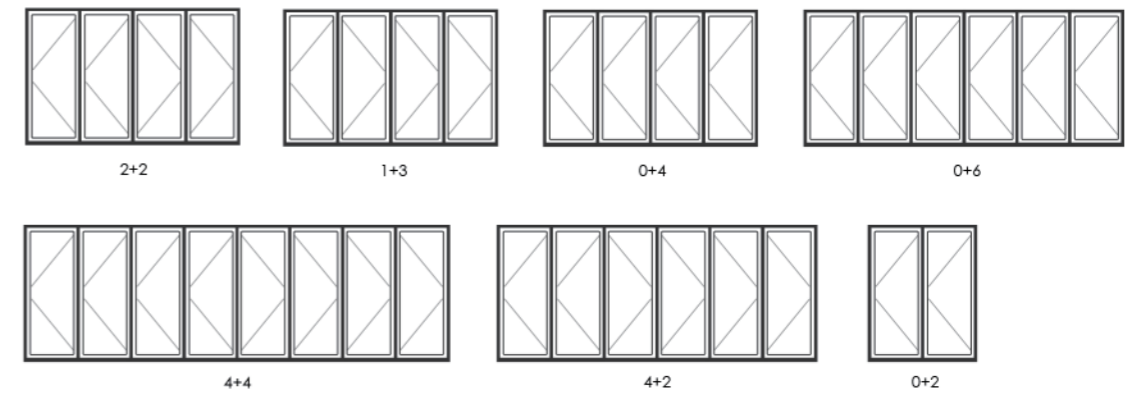
SPECIAL



SLIDING WINDOW / DOOR SERIES



FOLDING SERIES



SWING DOOR SERIES

