



# Becoming Brilliant at the Basics

COMMERCIAL DEREGULATED ENERGY

# **BECOMING BRILLIANT AT THE BASICS**

## COMMERCIAL DEREGULATED ENERGY

**Start here:** [Deregulation Tuesday 1pm \(EST\) Zoom link](#)

We've got live Zoom's every week for questions and answers to get you started strong!

**Check this out!** [Paramount Energy Management Infomercial](#)

All you have to do is get the Clients' utility bills for their FREE energy review!

**HOW TO GET**  
**RICH**  
IN  
**ENERGY**  
**DEREGULATION**



**THE Opportunity.**

“Energy deregulation will be the largest transfer of wealth in history.”

**Warren Buffett**



# residual income

Residual income includes earnings that involve some work to get started, but then profits continue to come in after the initial work is completed.

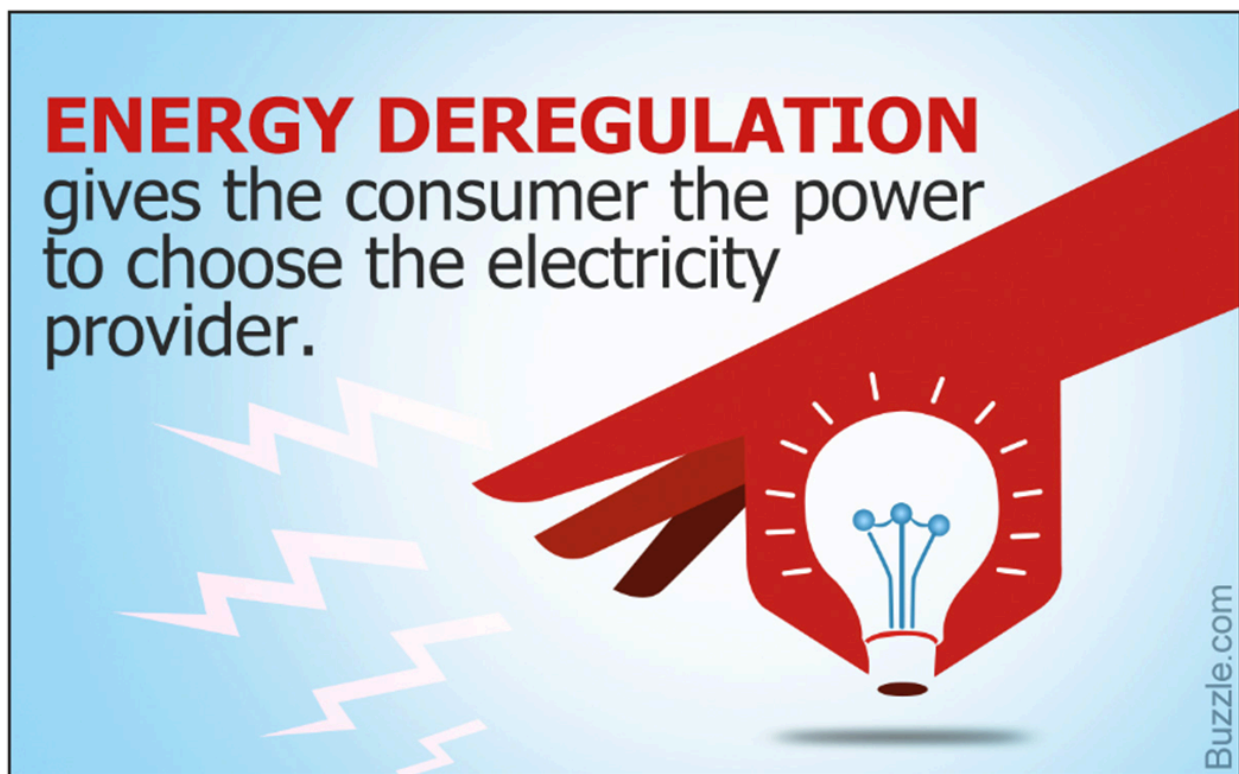


**Energy deregulation** is the restructuring of the energy industry to break up utility monopolies. allowing consumers to choose their energy supplier rather than relying on a single local utility for both power generation and delivery. It fosters competition, often resulting in lower prices, diverse energy plans, and renewable options.

## Key Aspects of Deregulated Energy Markets

**Split Functions:** Energy generation (supplied by competing, private companies) is separated from energy delivery (maintained by regulated utilities, like poles and wires).

**Consumer Choice:** In states with retail choice, consumers can shop for better electricity or natural gas rates from Retail Electric Providers.



**Reliability:** The local utility continues to deliver electricity, read meters, and respond to power outages, ensuring no change in service reliability.

**Market Opportunity:** Over half of US states have some form of deregulation, with Pennsylvania, Texas, New York, and Ohio having highly active competitive markets.



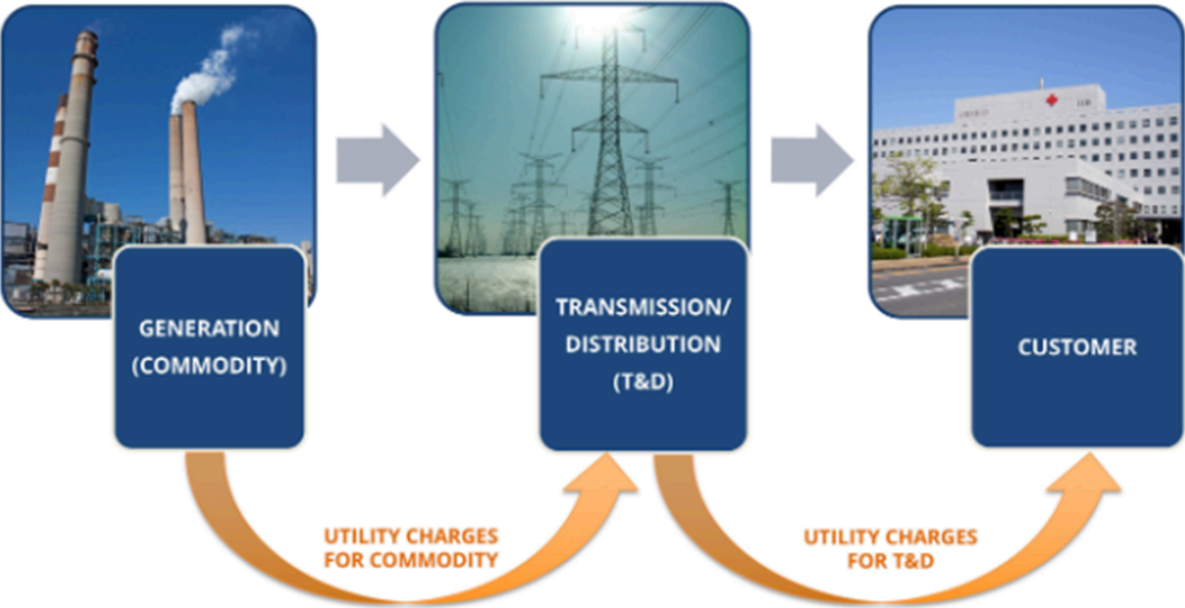
## Benefits to Clients

- Lower energy rates, innovative, fixed-rate plans, and renewable energy options.
- Clients get to focus on growing their business! We help them keep their hard earned money to the bottom line!

# Deregulation vs. Regulation

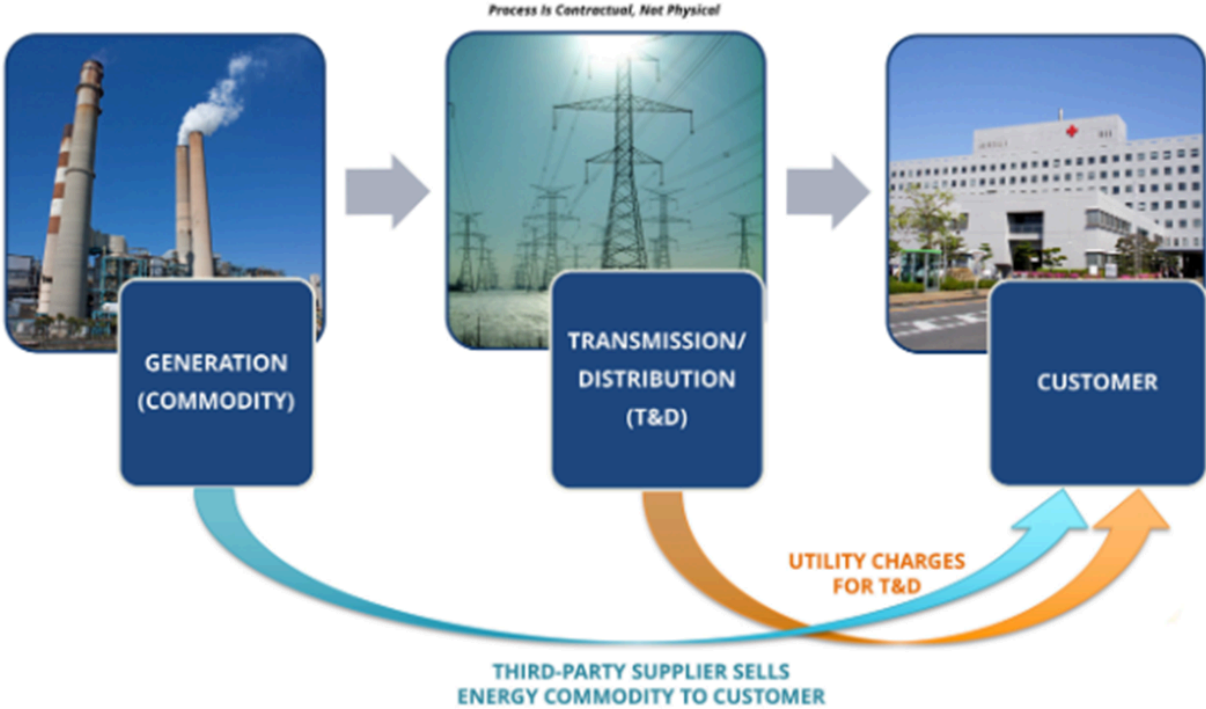
**Regulated:** One company controls generation, delivery, and billing.

## Standard Utility Process



**Deregulated:** Multiple suppliers compete for customers, while delivery remains regulated.

## Deregulated Process



Suppliers bid for the client business ensuring the Clients get the best rates, the most protective terms and we keep them there with our active and ongoing energy management.

Use the checkboxes along the left to select which supplier(s) to include in the bid proposal. Use the checkboxes along the bottom to select which term(s) to include in the bid proposal. Use the blue circles along the bottom to select the preferred term to highlight in the bid proposal. Click on a specific rate within the quote grid to select which supplier and term to use for the contract; a soft yellow background designates the desired contract rate.

Supplier ↑	Notes	6 ↑	12 ↑	18 ↑	24 ↑	30 ↑	36 ↑	42 ↑	48 ↑	54 ↑	60 ↑
<input type="checkbox"/> AP&E 4/8/2026 See notes	Max Accts: 20 Swing: 100%	\$0.12366 \$-7,152.00	\$0.13180 \$-4,710.00	\$0.12926 \$-5,472.00	\$0.13130 \$-4,860.00	\$0.12875 \$-5,625.00	\$0.12978 \$-5,316.00	\$0.12899 \$-5,553.00	\$0.12965 \$-5,355.00	\$0.13186 \$-4,692.00	\$0.13510 \$-3,720.00
<input type="checkbox"/> Constellation 4/8/2026 See notes	Swing: 100%	\$0.15802 \$3,156.00	\$0.17141 \$7,173.00	\$0.16854 \$6,312.00	\$0.17375 \$7,875.00	-	\$0.17556 \$8,418.00	-	\$0.17683 \$8,799.00	-	-
<input checked="" type="checkbox"/> freepoint 4/8/2026 See notes	Load Factor: 45%	\$0.12231 \$-7,557.00	\$0.13436 \$-3,942.00	\$0.13011 \$-5,217.00	\$0.13388 \$-4,086.00	\$0.12950 \$-5,400.00	\$0.13006 \$-5,232.00	\$0.12709 \$-6,123.00	\$0.12773 \$-5,931.00	\$0.12570 \$-6,540.00	\$0.12654 \$-6,288.00
<input type="checkbox"/> Hudson Energy 4/8/2026 See notes	Load Factor: 30% Max Accts: 10 Swing: 100%	-	\$0.13590 \$-3,480.00	\$0.13200 \$-4,650.00	\$0.13480 \$-3,810.00	\$0.13580 \$-3,510.00	\$0.13970 \$-2,340.00	-	-	-	-
<input type="checkbox"/> Nextera Energy 4/8/2026 See notes	Max Accts: 10 Swing: 100%	-	\$0.14132 \$-1,854.00	\$0.13998 \$-2,256.00	\$0.14188 \$-1,686.00	\$0.13898 \$-2,556.00	\$0.13773 \$-2,931.00	-	-	-	-
<input type="checkbox"/> SFE Energy 4/8/2026 See notes	Load Factor: 45% Swing: 100%	\$0.12810 \$-5,820.00	\$0.13710 \$-3,120.00	\$0.13540 \$-3,630.00	\$0.13850 \$-2,700.00	-	\$0.14350 \$-1,200.00	-	\$0.14630 \$-360.00	-	\$0.14820 \$210.00
<input type="checkbox"/> Santanna Energy Services 4/8/2026	Swing: 100%	\$0.12877 \$-5,619.00	\$0.13953 \$-2,391.00	\$0.13811 \$-2,817.00	\$0.14025 \$-2,175.00	-	-	-	-	-	-

It's that simple!

Jeff Boyer, CEO Deregulated Energy

[Jeff Boyer's Blinq Card](#)

[Deregulated Energy Discussion Channel in the Commonstead Community](#)