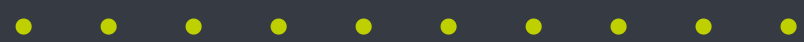




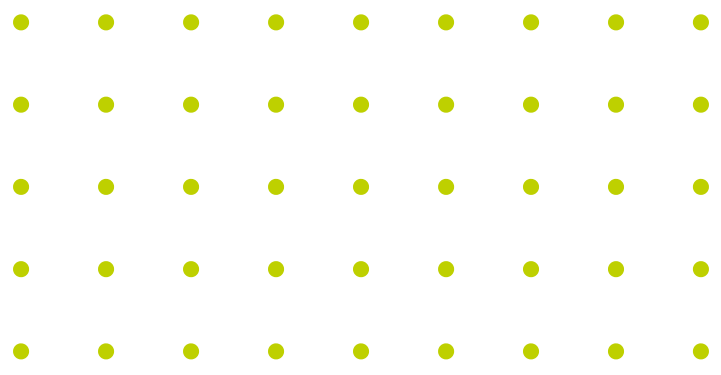
The Smart Homeowner's Guide To Planning A New Kitchen



What 2,000+ Kitchen Installations Have Taught Us



By The **Fineline Interiors** Team



DECISION 1

Start With How You Live, Not Just How Your Kitchen Might Look.

Beautiful imagery is everywhere. Social media and magazines are full of striking kitchens. But the kitchens that work best are not designed around appearance alone. In fact, they are built around habits and lifestyles, and each home is unique.

Think about your daily routine. Where do you naturally drop keys and post? How many people cook at the same time? Do guests gather around the island? Do you need space for children to sit and do homework?





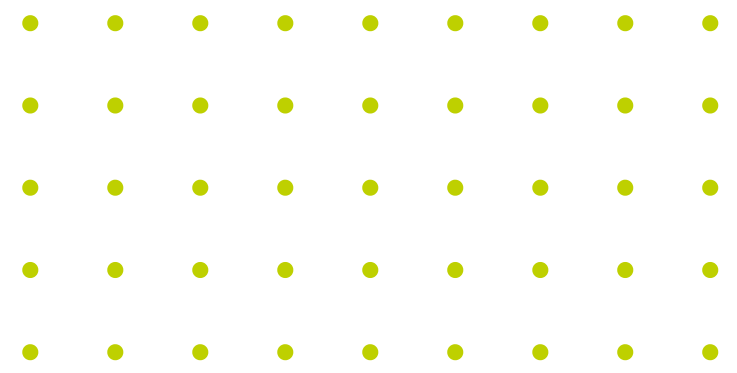
A design that ignores behaviour often creates small daily irritations: not enough drawer space, awkward appliance positioning, bottlenecks around key areas.

For example, if you regularly cook family meals, deep pan drawers near the hob may be more valuable than decorative shelving. If you entertain often, a generous prep area and easy circulation matter more than squeezing in an extra tall unit.



The smartest kitchens feel effortless because the layout reflects how the household genuinely lives. Style enhances it, but lifestyle shapes it.





DECISION 2

Understand The Real Budget, And Where It Goes

Many homeowners begin with a number in mind. Few fully understand what that number needs to cover.

A completed kitchen project usually includes:

- Cabinetry and internal fittings
- Worktops
- Appliances
- Installation labour
- Plumbing and electrical alterations
- Flooring and lighting
- Decorating and finishing



It is not uncommon for initial quotes to exclude elements that later increase the total investment. Sometimes this is an innocent oversight. Sometimes it is simply how certain suppliers structure their pricing, but clarity at the beginning prevents disappointment later.

A well-specified kitchen within the £10,000 to £30,000 range should feel structurally sound, thoughtfully designed and professionally installed. If pricing seems significantly lower than expected, it is worth asking direct questions about cabinet construction, installation standards and what is not included.

Budget transparency protects both sides, and ensures you can plan confidently, especially when comparing quotations from different companies.





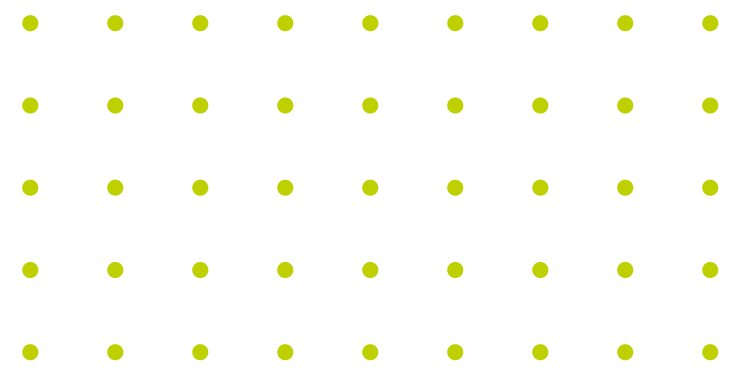
Thinner materials and lower-grade fittings may not be obvious at installation. The difference often becomes apparent after several years of use, as doors need adjustments, drawers lose their smooth action, and shelves bow under weight.



A solid cabinet, properly constructed and assembled in a factory environment, provides stability that lasts. It also improves the precision of installation and alignment.

When comparing suppliers, always ask questions about the construction, materials and hardware used, not just how they look.





DECISION 4

Design The Whole Room, Not Just The Cabinets

A kitchen is part of a wider environment. When the design only considers cabinetry, the result can feel disjointed.

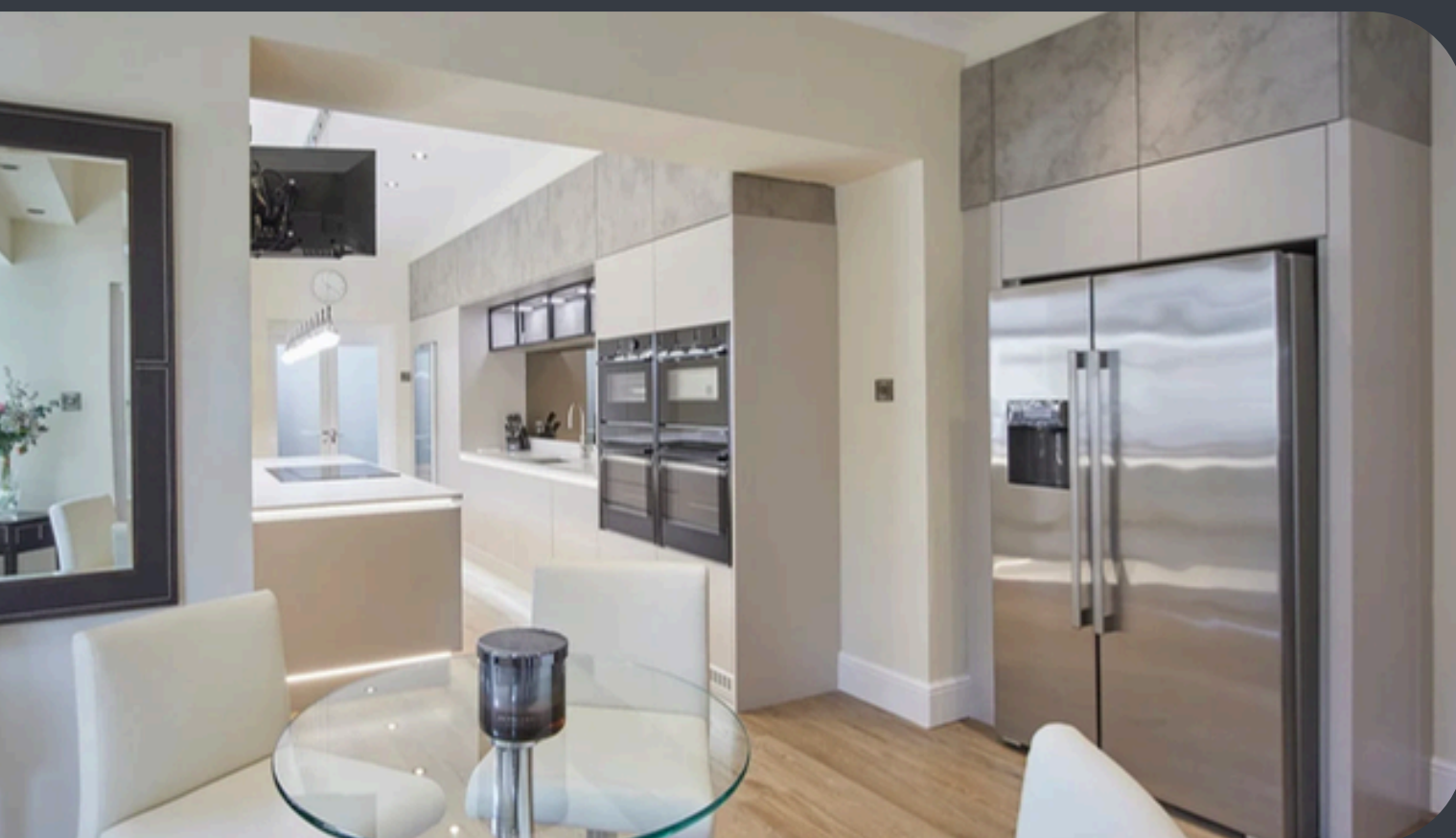
Lighting is a prime example of this. Task lighting under wall units, pendant lighting over an island and ambient lighting for evenings all serve different purposes. If these are added as an afterthought, the room rarely feels balanced. The same applies to flooring transitions, ceiling height, doorways and flow to adjacent rooms.



In open-plan homes, sightlines from living and dining areas become important. In older properties, structural quirks must be considered carefully.

We often see kitchens that look attractive in isolation but feel uncomfortable in use because circulation space has been compromised or the proportions feel tight.

Stepping back and designing the full space, not just the cabinets, creates cohesion. It ensures the kitchen feels integrated into the home rather than inserted into it.



• • • • • • • • • •
• • • • • • • • • •
• • • • • • • • • •
• • • • • • • • • •
• • • • • • • • • •

DECISION 5

Plan For The Next 10–15 Years, Not Just Now

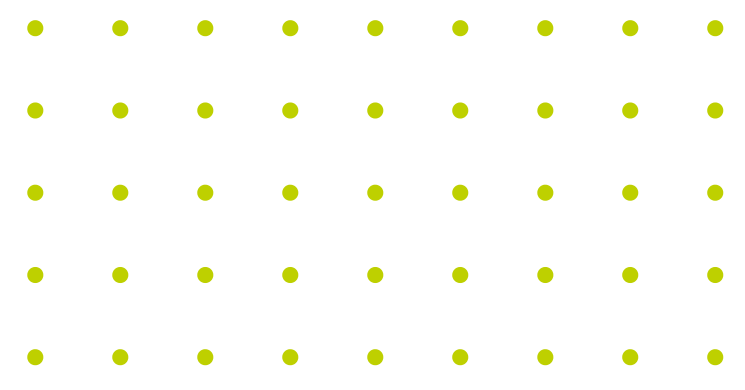
It is natural to design around current needs. However, kitchens are long-term installations.

Try to imagine yourself 10 years from now. Will storage requirements increase? Will children become teenagers? Will this be a home you stay in long-term? Might accessibility become more important later?

Small foresight can make a significant difference. Extra drawer space instead of cupboards. Wider walkways. Slightly higher appliance placement for ease of use. Additional power points are positioned thoughtfully.

Future-proofing does not require dramatic changes. It simply means avoiding short-term thinking. A kitchen that adapts to evolving needs will always feel like a better investment.





DECISION 6

Ask Who Is Actually Installing Your Kitchen

Even the best design can be undermined by poor installation.

Precision matters. Walls are rarely perfectly straight. Floors are not always level. Adjustments, scribing and careful finishing separate an average installation from a refined one.

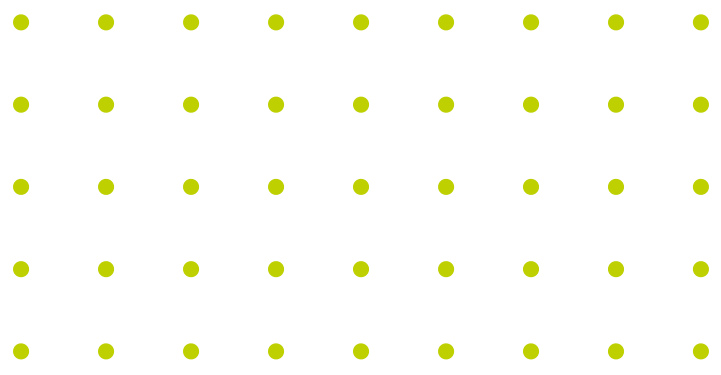
Understanding who is responsible for installation and how closely they work with the designer and manufacturer is essential for a great end product and a kitchen you're happy with.



When design, manufacturing and installation are aligned, communication is smoother, accountability is clearer, and issues are resolved quickly.

When these elements are disconnected, homeowners can find themselves coordinating between multiple parties, which increases stress during what should be an exciting stage of the project. Confidence in the installation team is just as important as confidence in the design.





DECISION 7

Choose A Company That Will Still Be There

A kitchen is not a temporary purchase. It should serve your home for many years.

Long-established companies offer reassurance that newer operations cannot. Longevity often reflects consistency, local reputation and sustained quality.

Aftercare, adjustments and occasional advice matter. Knowing that the company responsible for your project remains locally based and accessible provides peace of mind.

Experience also brings perspective. Having seen thousands of projects through from concept to completion, seasoned designers can anticipate issues before they arise.

Stability, experience and accountability are often overlooked factors, yet they are central to a successful kitchen project.



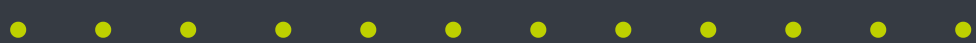


40 Years. 2,000+ Kitchens. **One Local Team.**

Fineline Interiors has been designing and manufacturing fitted interiors since 1986.

Over four decades, we have refined our process to ensure continuity from initial design consultation through to final installation. Our team understands the importance of detail – from cabinet construction to final alignment and finishing touches.

Many of our projects come through recommendations, which we believe reflects the long-term value of thoughtful planning and solid craftsmanship. Our approach is simple: design carefully, build properly, install precisely.



Ready To Take The Next Step?

.....

If you're considering a new kitchen and would like experienced, practical guidance before making any decisions, we offer a complimentary Discovery Call. This is not a sales presentation. It's a focused 20–30 minute conversation with one of our designers to help you think clearly about your project.

You can use the time to:

- Sense-check your layout ideas
- Understand realistic budget expectations
- Ask questions about materials, construction and installation
- Clarify what's involved from first design to completion

Whether you're at the very beginning or already gathering quotes, the purpose is simple: to help you plan confidently and avoid expensive missteps. No question is too big or too small.

If that would be useful, you can arrange a Discovery Call at a time that suits you by visiting our website finelineinteriors.co.uk

