

Week 3: The Architecture of Kindness & Praise

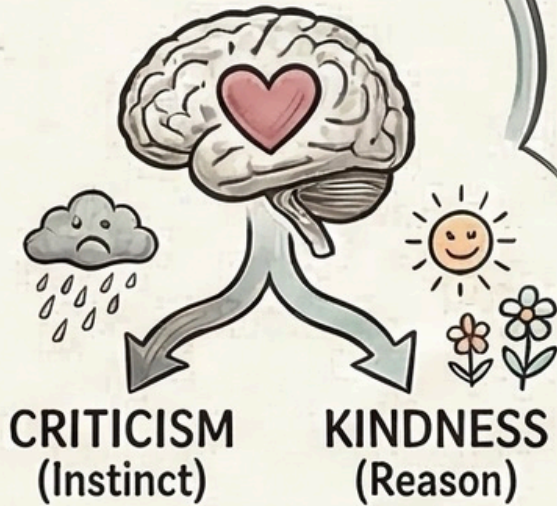
Building a Foundation for Growth & Recognition through Self-Compassion and Intentional Connection.

Radical Self-Kindness

ACHIEVER'S FATAL FLAW



High-performers are often their own harshest critics, leading to self-sabotage.



CRITICISM
(Instinct)

KINDNESS
(Reason)

Kindness is a Logical Choice

Audit Your Internal Dialogue

- ✓ Observe how you speak to yourself under pressure.
- ✓ Is it a COACH or a CRITIC?

The Power of Praise



Rewire the Nervous System



Every part responds favorably and performs better under recognition.

Practice Intentional Recognition



- ✓ Select ONE person this week.
- ✓ Praise their CONTRIBUTIONS & CHARACTER.

The Gratitude Pivot



SWAP COMPLAINTS



FOR GRATITUDE

Actively identify one recurring complaint and replace it with a statement of thanks.

As You Write, You Invite

Handwriting your successes and blessings strengthens neural pathways of abundance.



Week 3: The Power of Kindness & Praise

The Element of Kindness



The Achiever's Fatal Flaw

- High-achievers often sabotage their progress by being harder on themselves than they are on others.



Kindness as Internal Fuel

- Being kind to yourself teaches your nervous system that achieving is safe, rewarding, and sustainable.



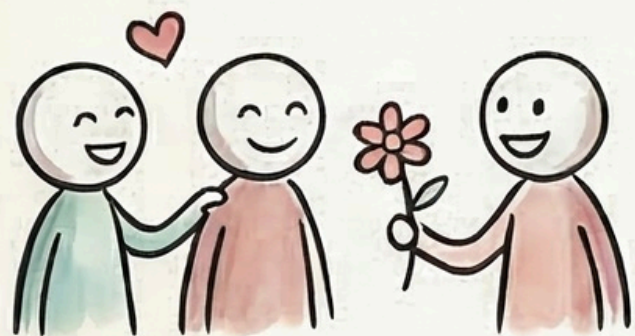
The Art of Praise

Rehearsal Over Practice

- Rehearsal is “practice with purpose,” combining repetitive action with intense, positive emotion to lock in habits.

Praise is the ‘Father of Skill’

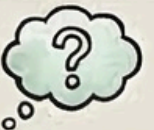


- While repetition builds neural pathways, praise supercharges the process by linking immediate pleasure to the behavior.



Random Acts of Connection

- External kindness—compliments, smiles, or telling someone you love them—returns energy to you tenfold.

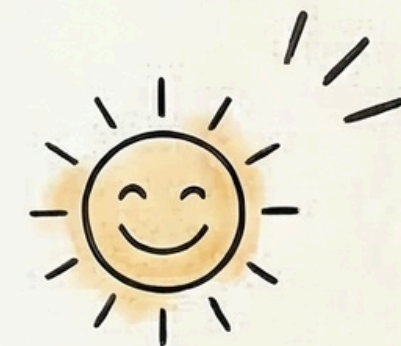
Reflective Prompts from the Week 3 Participant Workbook

Reflection Prompt	Actionable Focus
 Inner Dialogue	How do I speak to myself under pressure?
 External Impact	Who can I intentionally praise this week?
 Gratitude Shift	What complaint can I replace with gratitude?



Complaints

- Shift your focus from what is missing to what you have already successfully accomplished.



Gratitude

Element IV – Kindness & The Achiever’s Fatal Flaw



The Concept: High-achieving leaders frequently suffer from “The Achiever’s Fatal Flaw”—exhibiting boundless grace for others while remaining ruthlessly critical of themselves.

The Pivot: Relentless pressure creates systemic failure. Eventually, the nervous system pushes back through burnout or self-sabotage.

The Structural Fix: Intentional self-praise. Kindness to oneself is not a weakness; it is a mechanical requirement for sustained excellence.

Synthesis: The Empowerment Matrix

<i>The Element</i>	<i>The Corporate Threat</i>	<i>The 'Magnificent' Pivot</i>	<i>Daily Action</i>
Integrity	Impostor Syndrome	Inner Congruence	Identity Declarations
Tenacity	Initiative Fatigue	The Discipline Loop	Follow a strict prescription
Energy	Burnout	The 6 Fuels	Protect physical boundaries
Kindness	The Achiever's Flaw	Grace	Radical self-praise

The Path to Magnificence

Kindness & Praise

The Essence of Kindness

KINDNESS IS A CONSCIOUS CHOICE



It is a virtue that feeds the soul and distinguishes human reason from animal instinct.



THE ACHIEVER'S FATAL FLAW

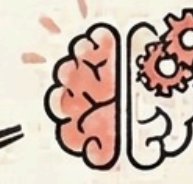
Being overly self-critical causes self-sabotage; practising self-kindness is essential to go farther and faster



THE MEASURE OF CHARACTER

True magnificence is defined by what you do when nobody is watching

The Mechanics of Praise



PRAISE: THE FATHER OF SKILL



While repetition builds skill, praise locks that skill into the nervous system through pleasure



PRACTICE VS. REHEARSAL

Rehearsal is practice combined with intense, positive emotion to supercharge the learning process



THE BRAIN'S PRAISE HACK

The brain does not care where praise comes from; self-praise is just as effective as external approval

CONTEXT SUMMARY

Explore the psychological synergy between kindness and praise. By choosing kindness and utilising 'Self-Praise,' individuals can move from simple practice to high-intensity rehearsal, effectively training the brain to seek success.

KINDNESS & PRAISE