

# MAGNALYTIX<sup>®</sup>

## MGX B-24 Type I SIR Test Board

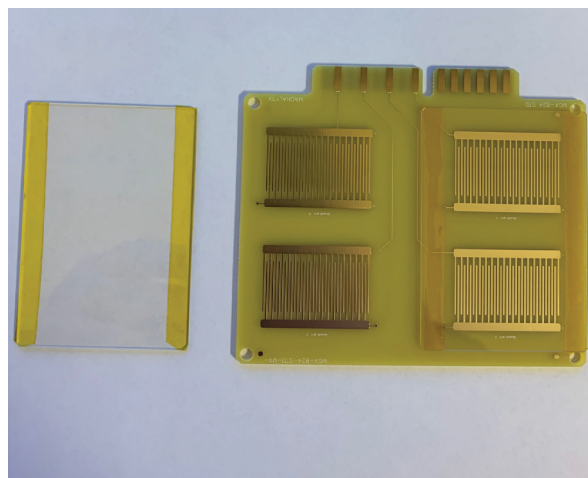


### Practical Uses

The Magnalytix B-24 Type I test board is representative of the IPC B-24 test board design to characterize solder materials and cleanliness. The test patterns are exposed to an accelerating test environment of temperature and humidity under bias to measure Surface Insulation Resistance [SIR Leakage Currents] between two metal electrodes.

The test board was designed to evaluate the interactions between laminate, surface metallization's, and fluxes. The B-24 is the primary test board for meeting ANSI J-STD-004, which is the IPC specification on fluxes.

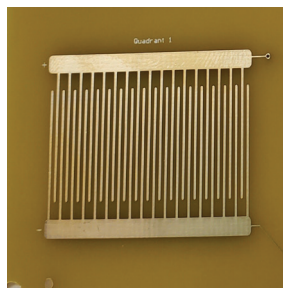
The four comb patterns are identical and have 16 mil lines and 20 mil spaces. These values were chosen to reduce bridging when evaluating soldering pastes and wave soldering processes.



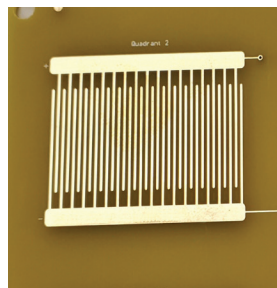
- Primary Uses
  - Characterizing solder pastes and fluxes
  - SIR response can be different from different soldering materials
  - Classification of Solder Fluxes per J-STD-004
- Secondary Uses
  - Glass slide to test solder paste outgassing
  - Test methods such as ROSE, IC and SIR

### Test Card Comparison

	MGX B-24 Type I SIR Test Board	IPC B-52 SIR Test Board
Quadrant 1	0.4 mm lines - 0.5 mm spaces	Included
Quadrant 2	0.4 mm lines - 0.5 mm spaces	Included
Quadrant 3	0.4 mm lines - 0.5 mm spaces	Included
Quadrant 4	0.4 mm lines - 0.5 mm spaces	Included

 **SIR Test Parameters****QUADRANT 1**

0.4 MM LINES - 0.5 MM SPACES

**QUADRANT 2**

0.4 MM LINES - 0.5 MM SPACES

**QUADRANT 3**

0.4 MM LINES - 0.5 MM SPACES

**QUADRANT 4**

0.4 MM LINES - 0.5 MM SPACES

**MGX B-24 Type I Test Set**

The MGX B-24 is designed as an Open-Comb test board. For Open-Comb tests, we offer the board with no components in sets of 10-boards.

The MGX B-24 test board can be used with a glass slide to cover two of the Quadrants. For clients that want the glass slides to be included, a test set of 10 boards and 10 glass slides is available.