

MAGNALYTIX[®]

MGX 20 Pin Header SIR Test Board

Practical Uses

MGX 20 Pin Header SIR Test Board is useful in testing rework, touch-up, wave soldering and selective soldering processes. The test board is useful in characterizing different fluxes, reflow parameters, topical cleaning, and cleaning processes. Four connectors with pitches ranging from 1.0 mm, 1.27 mm, 2.0 mm, and 2.54 mm are designed within each quadrant. Header pins allow for isolating the horizontal and vertical position within each channel.

- **Materials Characterization**

- Activity of Flux Residue
- Reflow conditions

- **Cleaning**

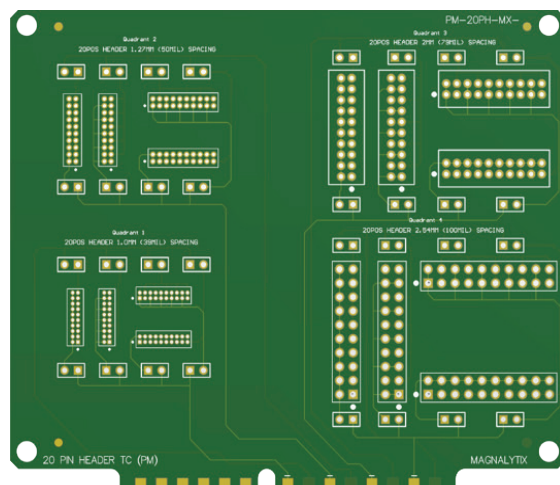
- Topical
- Batch
- Inline

- **Components**

- Connector Pitch

- **Process**

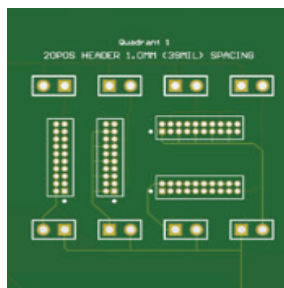
- Selective Soldering
- Rework
- Topical
- Wave Soldering



Test Card Comparison

	MGX Pin Header SIR Test Board	IPC B-52 SIR Test Board
Quadrant 1	QTY 4 of 1.0 mm (39 mil) 20 pin Headers	Not Included
Quadrant 2	QTY 4 of 1.27 mm (50 mil) 20 pin Headers	Not Included
Quadrant 3	QTY 4 of 2 mm (79 mil) 20 pin Headers	Not Included
Quadrant 4	QTY 4 of 2.54 mm (100 mil) 20 pin Headers	Not Included

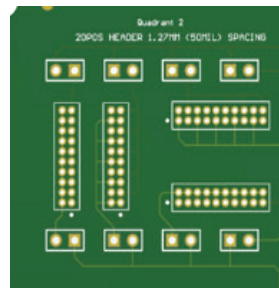
✓ SIR Test Parameters



QUADRANT 1

EDGE PIN 1 =
ODD PADS

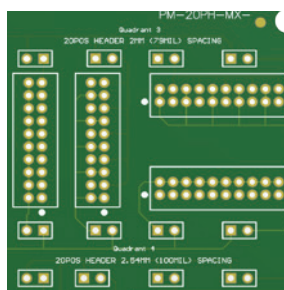
EDGE PIN 2 =
EVEN PADS + GND
LUG



QUADRANT 2

EDGE PIN 3 =
ODD ROW PADS + GND
LUG

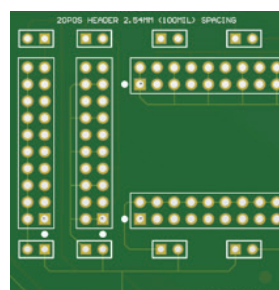
EDGE PIN 4 =
EVEN ROW PADS



QUADRANT 3

EDGE PIN 5 =
EVEN PADS + LEFT COMB
BUS

EDGE PIN 6 =
ODD PADS + RIGHT COMB
BUS



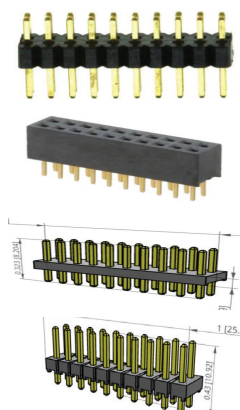
QUADRANT 4

EDGE PIN 7 =
LEFT PAD OF ALL CAPS

EDGE PIN 8 =
RIGHT PAD OF ALL CAPS

Component Description

An array of Pin Headers with pitches ranging from 1.0 mm to 2.54 mm.



- **Pin Header** - 1.0 mm (36 mil) spacing
- **Pin Header** - 1.27 mm (50 mil) spacing
- **Pin Header** - 2.0 mm (79 mil) spacing
- **Pin Header** - 2.54 mm (100 mil) spacing

MGX Pin Header Test Set

Each Magnalytix Test Set includes the substrates and components to build complete assemblies needed for 1 standard testing cycle and provide the objective evidence needed to meet IPC J-STD-001G-Am1. This includes:

10 - MGX Pin Header Test Boards | 40 - 1.0 mm Pin Headers | 40 - 1.27 mm Pin Headers

40 - 2 mm Pin Headers | 40 - 2.54 mm Pin Headers