

MAGNALYTIX[®]

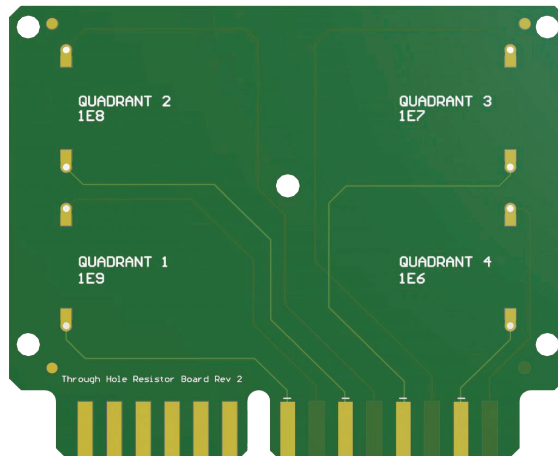
MGX 9-8-7-6 Validation Resistor Card



Practical Uses

The Magnayltix MGX 9-8-7-6 Validation Resistor Card assesses the repeatability and reliability of the SIR measurement system. Precision resistors with known values are placed in each of the four quadrants within the test board.

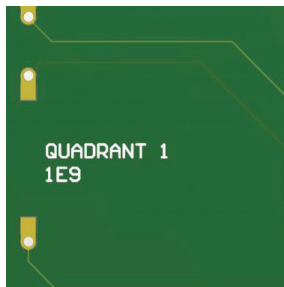
- Primary Uses
 - Validation of the Measurement System
 - Gage R&R
 - Cable Validation



Test Card Comparison

	MGX B-52 Legacy 4 SIR Test Board	IPC B-52 SIR Test Board
Quadrant 1	QFN-48 - 0.5 mm Pitch	Not Included
Quadrant 2	QFN-88 0.5 mm pitch and Dual Row 124 - 0.5mm pitch	Not Included
Quadrant 3	64 Lead SMT Connector - 1.0 mm Pitch	Included
Quadrant 4	80 Lead SMT/TH Connector (40 SMT / 40 TH) - 1.27 mm pitch	Not Included

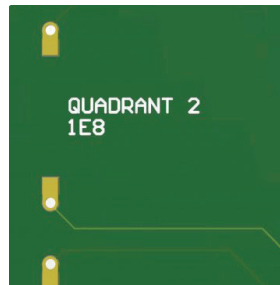
SIR Test Parameters



QUADRANT 1

EDGE PIN 1 =
BOTTOM PAD

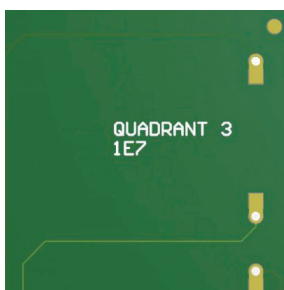
EDGE PIN 2 =
TOP PAD



QUADRANT 2

EDGE PIN 3 =
BOTTOM PAD

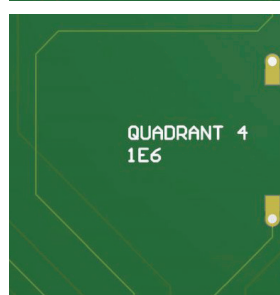
EDGE PIN 4 =
TOP PAD



QUADRANT 3

EDGE PIN 5 =
BOTTOM PAD

EDGE PIN 6 =
TOP PAD



QUADRANT 4

EDGE PIN 7 =
BOTTOM PAD

EDGE PIN 8 =
TOP PAD

Component Descriptions

The System Validation test board finds use in verifying that the measurement system is taking data values accurately.

- The measurement system is verified by substituting a resistor verification coupon in place of the test coupons while in the chamber at ambient conditions.
- The resistance verification coupon is fitted with 4 “known value” resistors of $10^6 \Omega$, $10^7 \Omega$, $10^8 \Omega$ and $10^9 \Omega$ resistors in specific current pathways according to Figure 1.

MGX 9-8-7-6 Validation Resistor Card

Each Magnalytix Test Set includes the substrates and components to build complete assemblies needed for 1 standard testing cycle and provide the objective evidence needed to meet IPC J-STD-001G-Am1.

8 Each - System 9-8-7-6 Validation Card