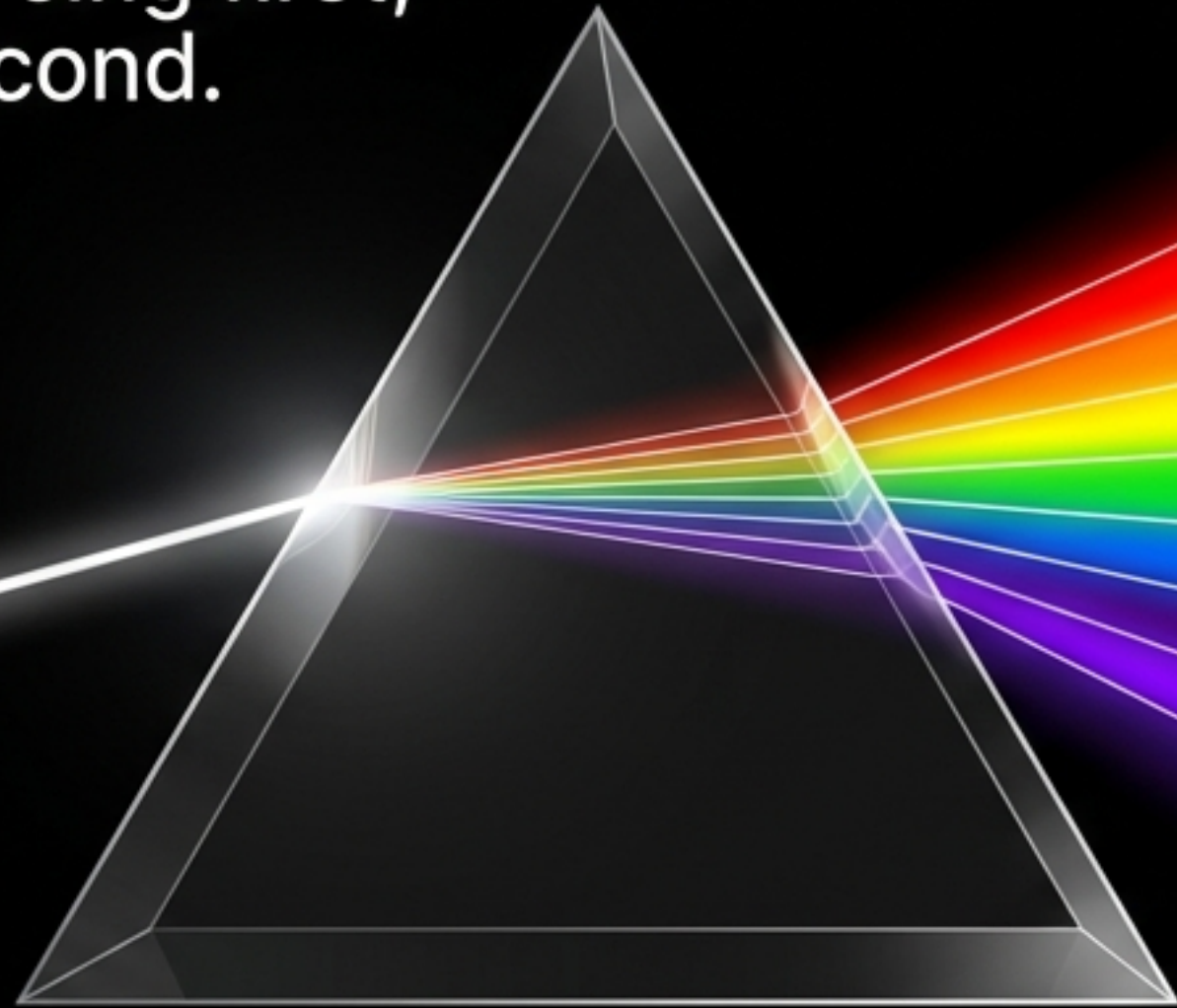


THE LIGHT-LIFE PARADOX

You are a light being first,
a food being second.



The Hierarchy of Biology:
1. Physics (Light)
2. Electrons
3. Biochemistry (Food/Drugs)

The Axiom:
The outermost electron in an atom controls 100% of its biochemical ability. Light controls the electron.

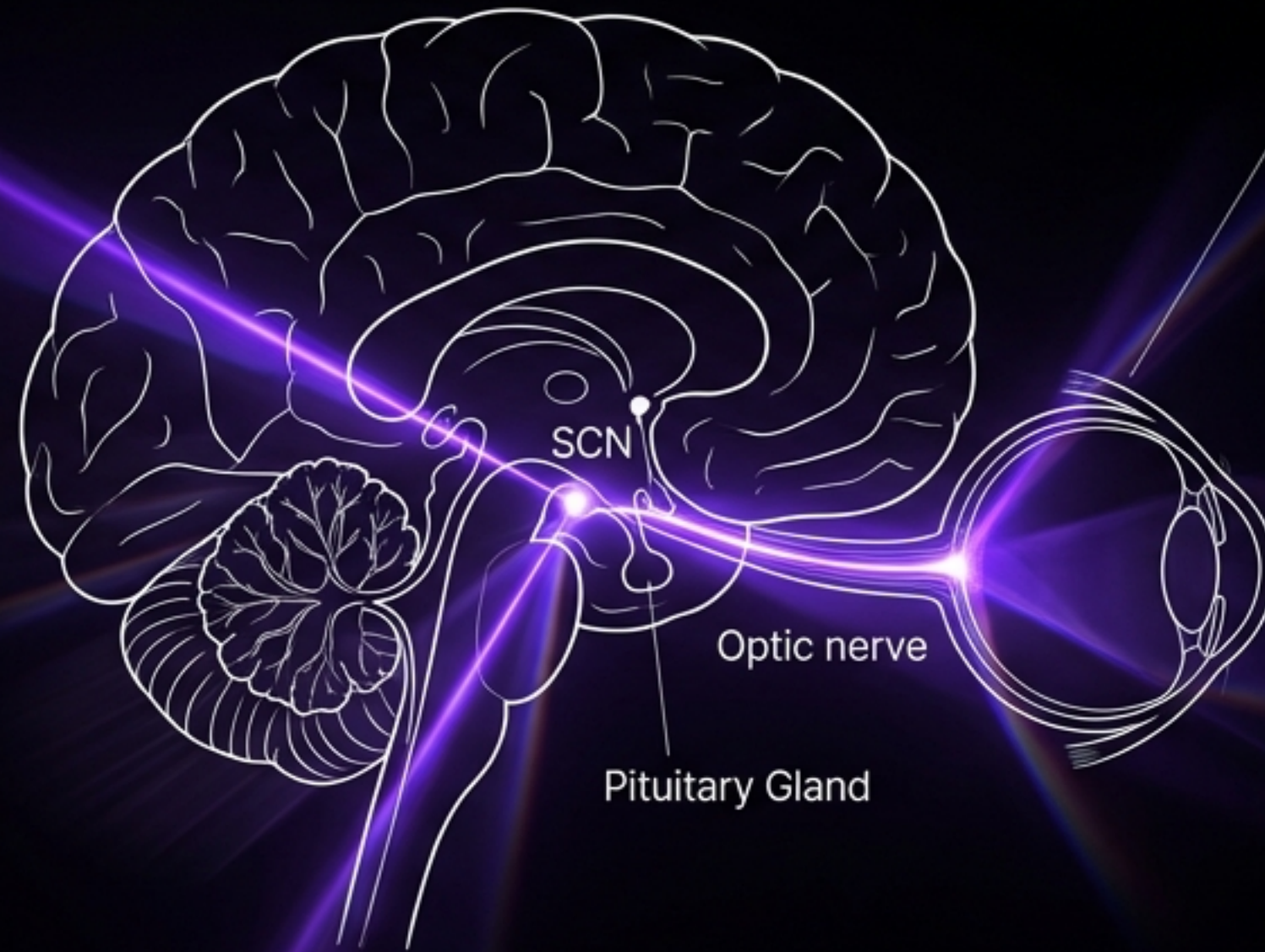
The Epigenetic Reality:
The environment dictates to the genome. Light acts as a 'photo-switch' that alters DNA expression before any changes occur in the nuclear genome.

THE OPTICAL LATTICE

The Eye is a Clock, Not a Camera.

The Master Mechanism:

The SCN is an optical lattice clock. To maintain biological order, this clock must run faster than the peripheral clocks in the liver and gut—just as GPS satellites must run faster than devices on Earth.



Power Source:

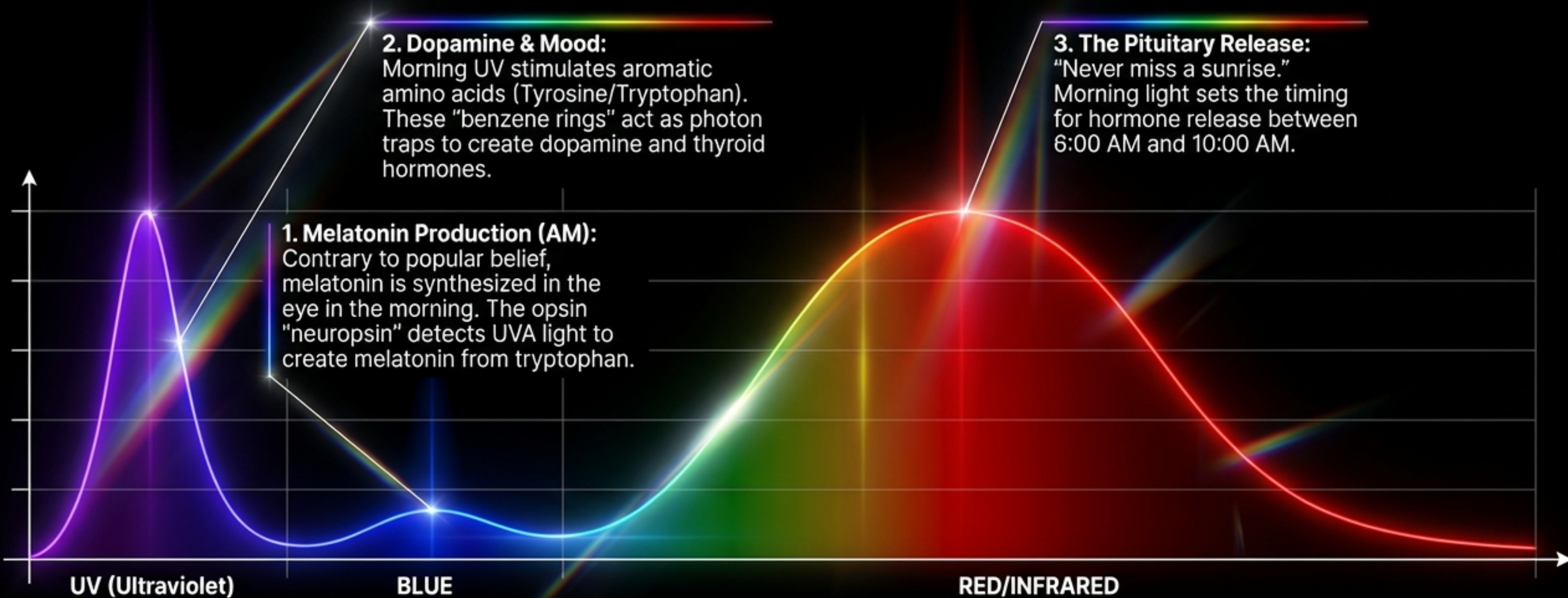
The Retinal Pigment Epithelium (RPE) is loaded with DHA (Docosahexaenoic acid), turning light into DC electric current.

Fuel Requirement:

UV Light (290–400nm). If the eye clock slows down due to lack of UV, the body loses synchronization, leading to metabolic chaos.

THE MORNING ANTIDOTE

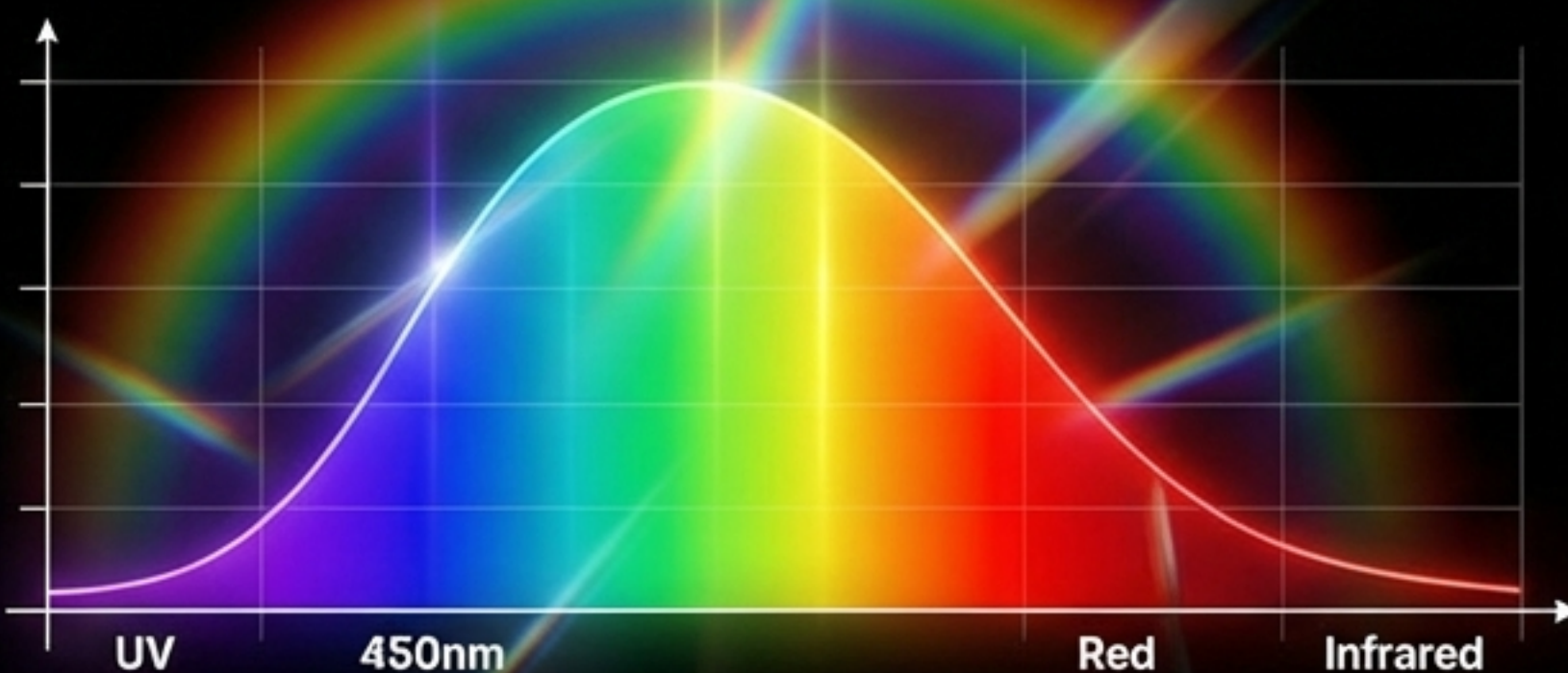
Manufacturing Your Biochemistry



THE ALIEN SUN

How We Subtract Humans from Nature

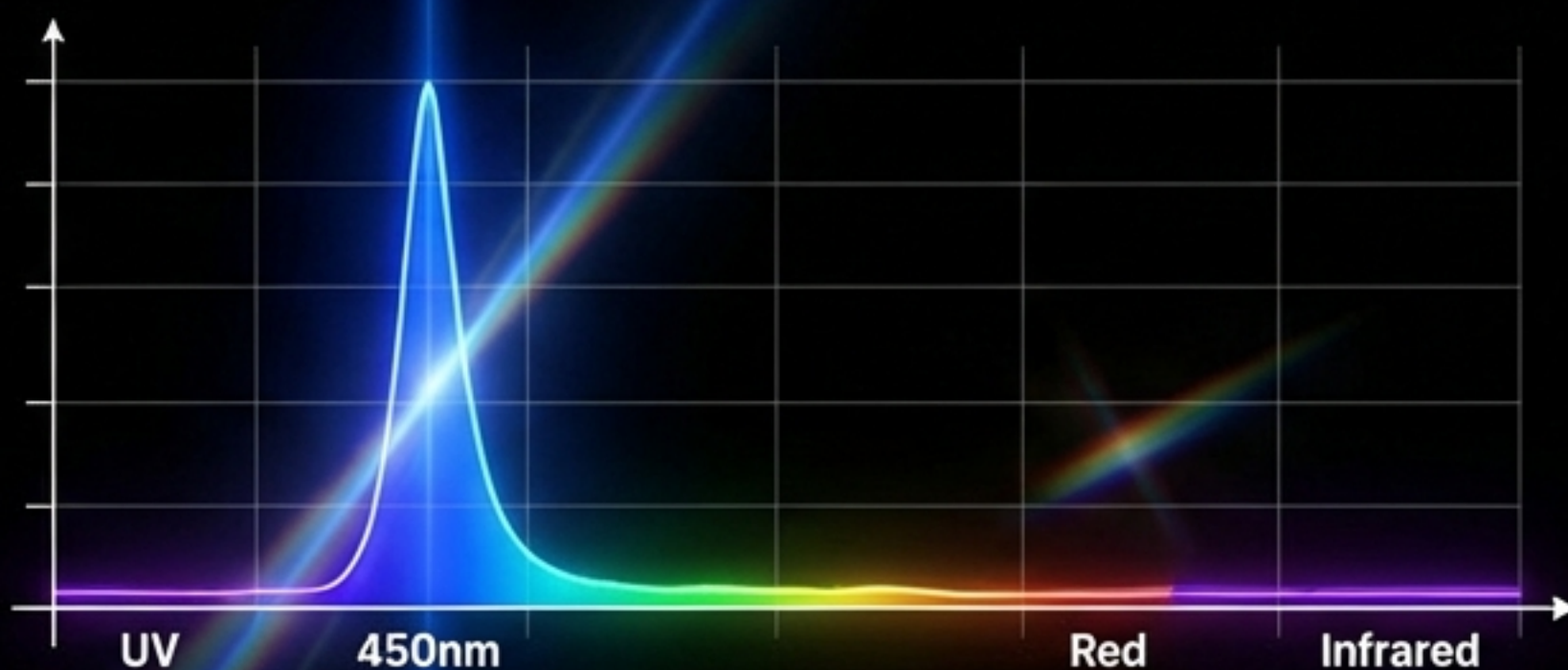
A. Nature (Sunlight)



The Deficit:

Modern LEDs remove the 'Pink Floyd' balance. They strip out the healing Red, Purple, and UV frequencies found in nature.

B. Tech (LED)



The Toxin:

Artificial light mimics the brightness of noon but lacks the biological information. It is 'Junk Light.'

The Impact:

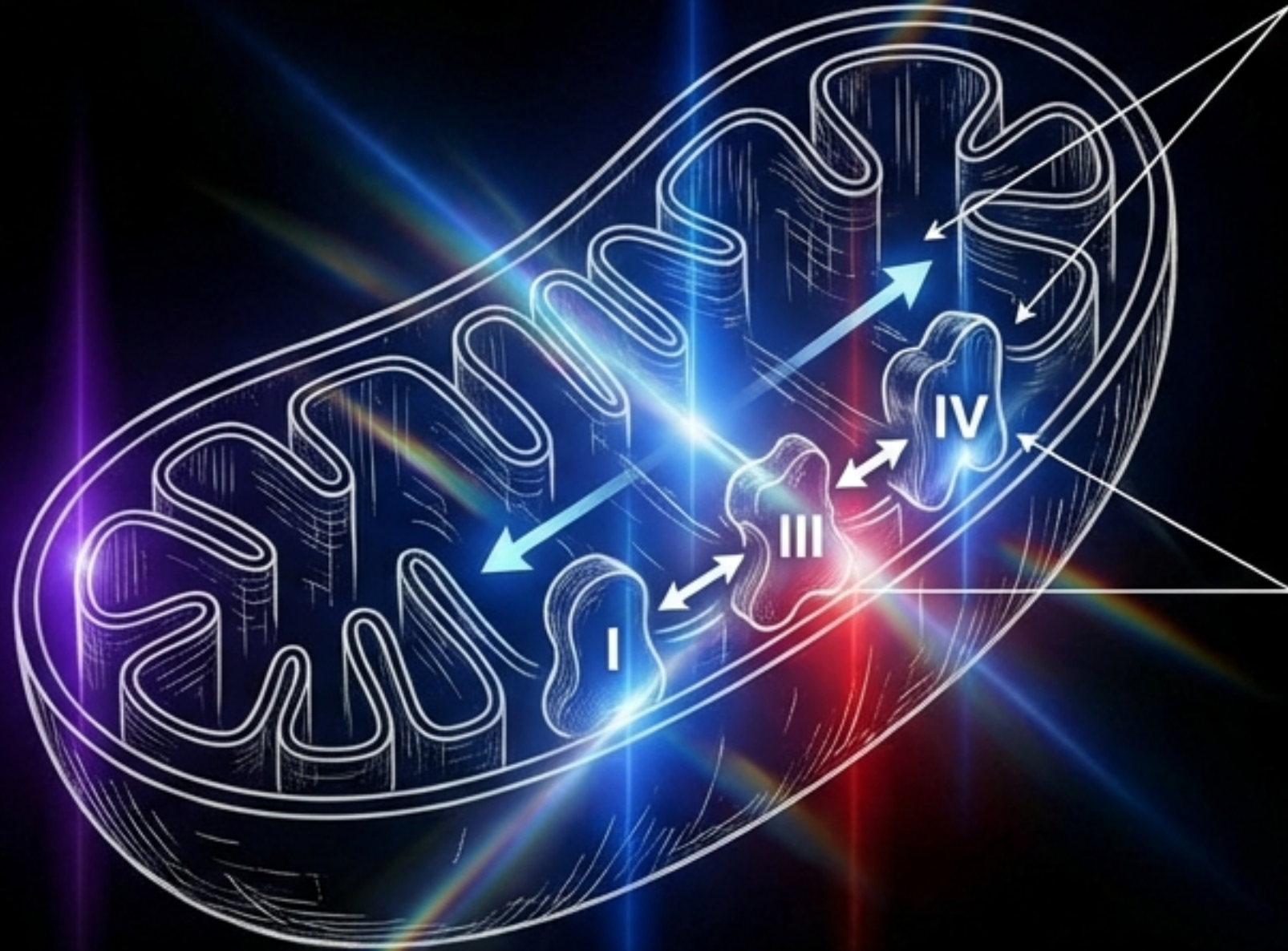
In nature, Blue is always buffered by Red (42% of sunlight). LEDs provide the high-energy stimulus without the antidote, creating unresolvable metabolic stress.

MITOCHONDRIAL SUFFOCATION

The Ferrari Without a Mechanic

The Analogy:

Your body is a Ferrari designed to go 225 mph. Blue light is the gas pedal. Red light is the mechanic. LEDs press the gas while firing the mechanic.



The Mechanism of Injury:

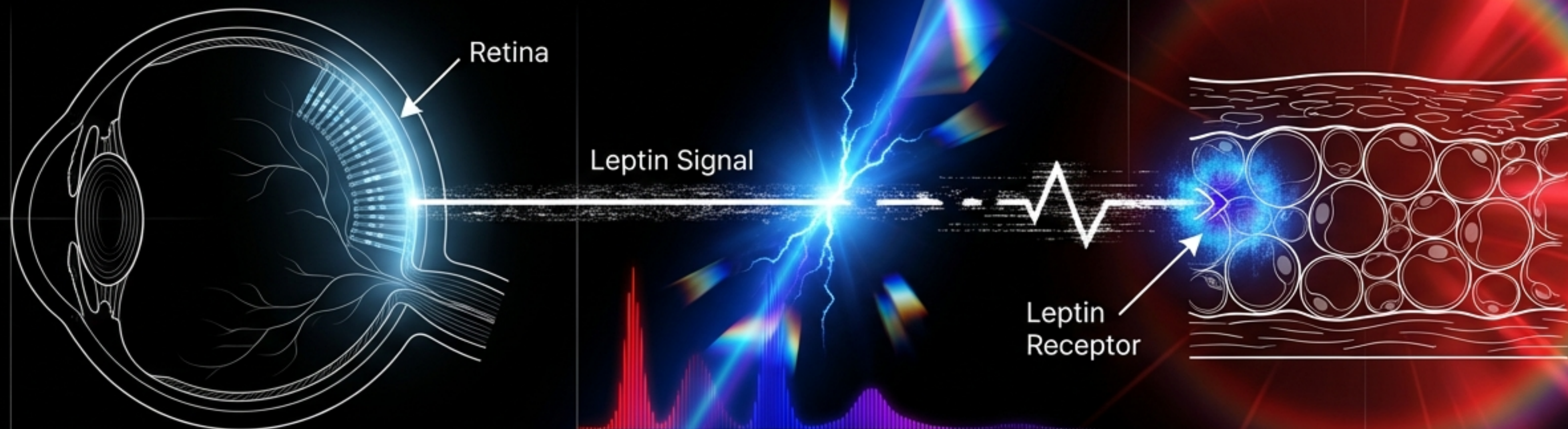
Isolated blue light stretches the respiratory proteins, increasing the distance electrons must jump. Result: The electron transport chain slows down.

Irreversible Hypoxia:

This stretching causes "pseudohypoxia"—the cell suffocates even in the presence of oxygen. NAD^+ drops, water production ceases, and the cell ages.

THE METABOLIC TRAP DOOR

Why Blue Light Makes You Fat



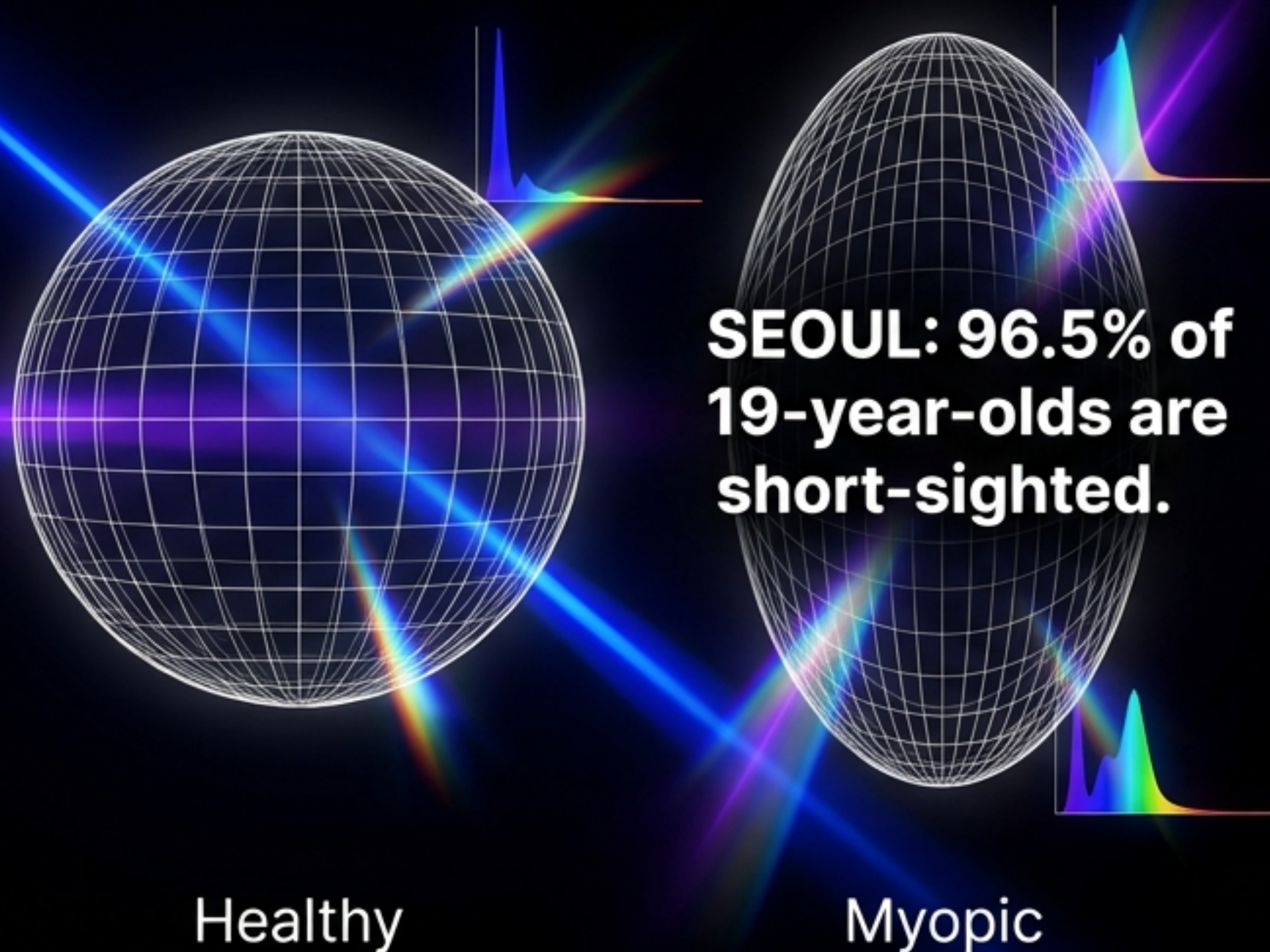
The Signal: The central retinal pathway ends at the Leptin Receptor in body fat. Leptin is the brain's energy gauge.

The Glitch: Blue light after sunset destroys this signal. The brain becomes "Leptin Resistant"—it has no idea how much energy is stored.

The Red Giant Effect: "Everything in the universe that loses energy gets bigger." Like a dying star expanding into a Red Giant, a body losing energy to light toxicity expands its mass to capture more energy.

THE MYOPIA BOOM

A Visible Sign of Toxicity



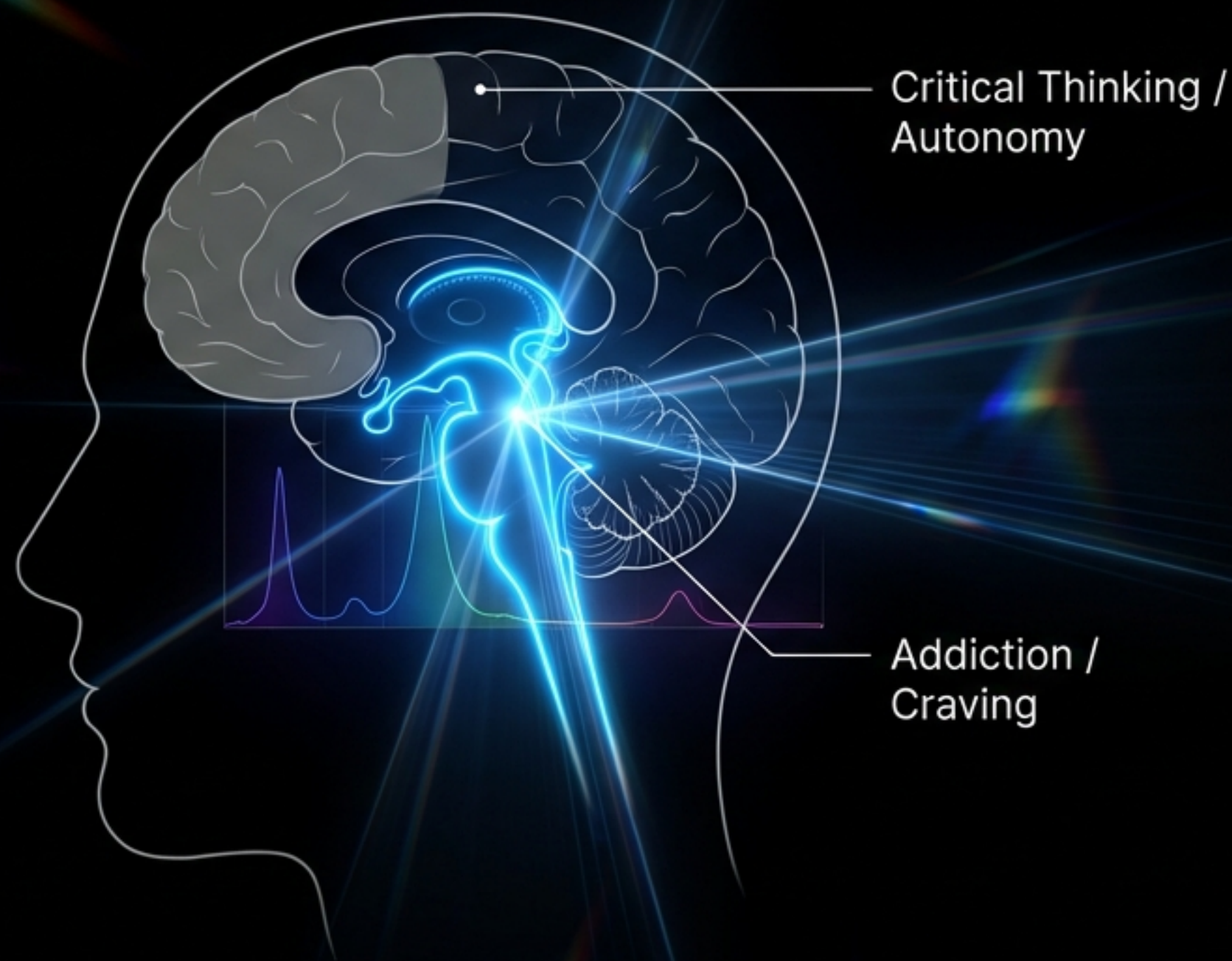
The Dopamine Stop Signal: Dopamine in the retina acts as the “stop” signal for eye growth.

The Cause: Blue light lowers dopamine. Without the signal, the eye physically elongates to search for the missing UV/Red light.

The Verdict: Myopia is not genetic; it is environmental. It is a sign of “ocular hypotony”—low energy in the eye muscles caused by artificial spectrums.

THE DOPAMINE DEFICIT

The Architecture of Control



The Neurochemistry of Obedience:
“Anything that lowers dopamine makes you more likely to obey.”

The Dumbing Down:
High dopamine is required for the perception of truth. When dopamine is depleted by blue light, critical thinking fades.

The Cycle:
Blue Light lowers Dopamine -> Brain enters Seeking State -> Addiction to Screen -> Repeat.

THE SMOKING GUN

What Steve Jobs Knew

The Steve Jobs Rule:

He strictly limited his own children's access to the iPad.

The Hidden Sensor:

Allegation: The iPad 2 contained an unmarketed infrared detector acting as a "Kill Switch" for RF/Microwave transmission when touching a child's body.

The Silence:

Marketing this safety feature would be an admission: "I know my technology is bad, so I'm putting something in it to protect children."



THE TRANSFER

DARPA and the Theft of Time

The Origin:

Attention-capture technology was not invented in Silicon Valley; it was transferred from military patents.

The Objective:

To 'steal time'—a living creature's most valuable asset.

The 'Zoo Animal' Effect:

By disconnecting humans from the sun and connecting them to the grid, we are biologically degraded into dependent subjects. If screens included restorative Red/Purple frequencies, addiction would break. They are omitted by design.



PROTOCOL I: RED LIGHT

The Antidote & The Mechanic

Reversing the Damage: If Blue light is the gas pedal, Red light is the mechanic.

Mechanism:

- 1. Shrinks Proteins:** Red light physically shrinks respiratory proteins back to optimal distance.
- 2. Activates Cytochrome C Oxidase:** Turns on the 4th step of respiration.
- 3. ATPase Efficiency:** Spins the energy engine at 100% efficiency, generating power even without food electrons.

Implementation: "Heal in the Red." Use red/infrared therapy to repair the digital damage.



PROTOCOL II: THE SOLAR CALLUS

Nature's Sunscreen

Preconditioning:

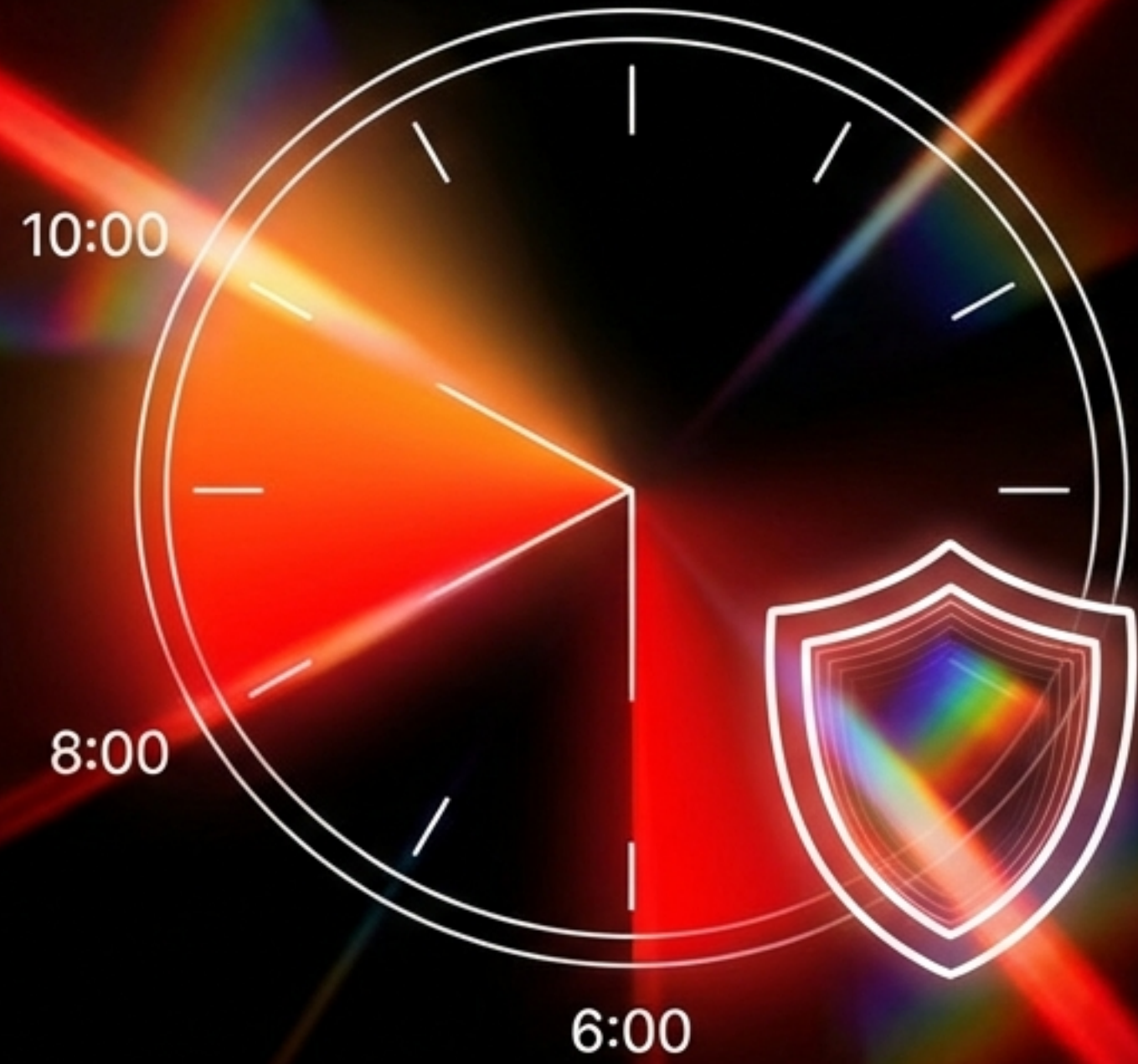
Morning sun is rich in Infrared-A (600-1000nm) but low in UV. This light signals the skin to upregulate melanin **before** the harsh noon UV arrives.

The Failure of Timing:

Sunburn is not a toxicity of the sun; it is a failure of timing. You missed the morning warning signal.

The Protocol:

Expose skin and eyes (no glasses) to morning Infrared-A for 20 minutes daily.
Surrogate: 250W Infrared Heat Lamps or Reptile UVB bulbs.



PROTOCOL III: THE WET CONNECTION

Eating Electrons Without Food

The Physics of Inflammation:

Inflammation is a net positive charge (protons).
Health is a net negative charge (electrons).

Grounding:

Connecting to the earth allows you to absorb free electrons to neutralize inflammation.

Saltwater Synergy:

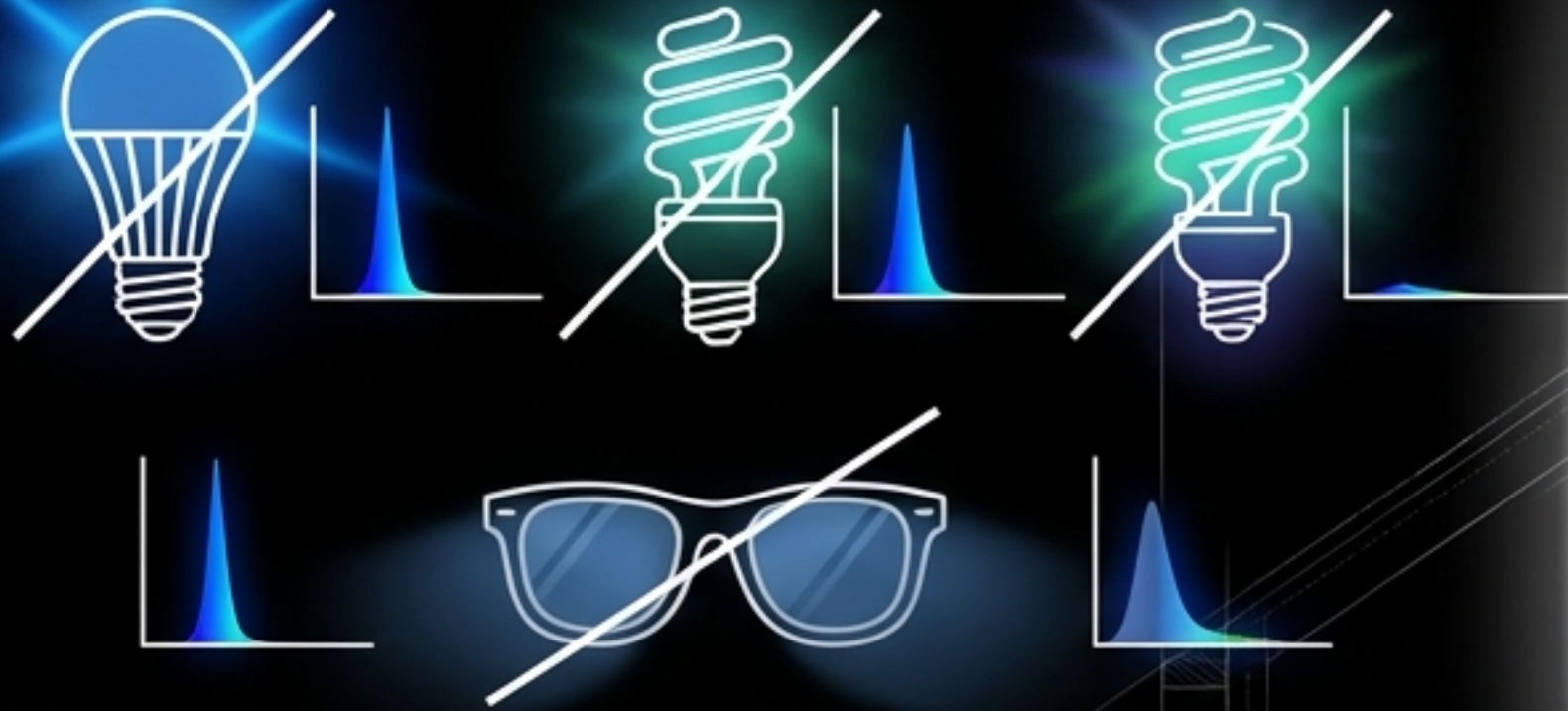
We evolved sweat glands to create a “wet connection.” Saltwater lowers electrical resistance, maximizing electron uptake. Cold water increases electron density.



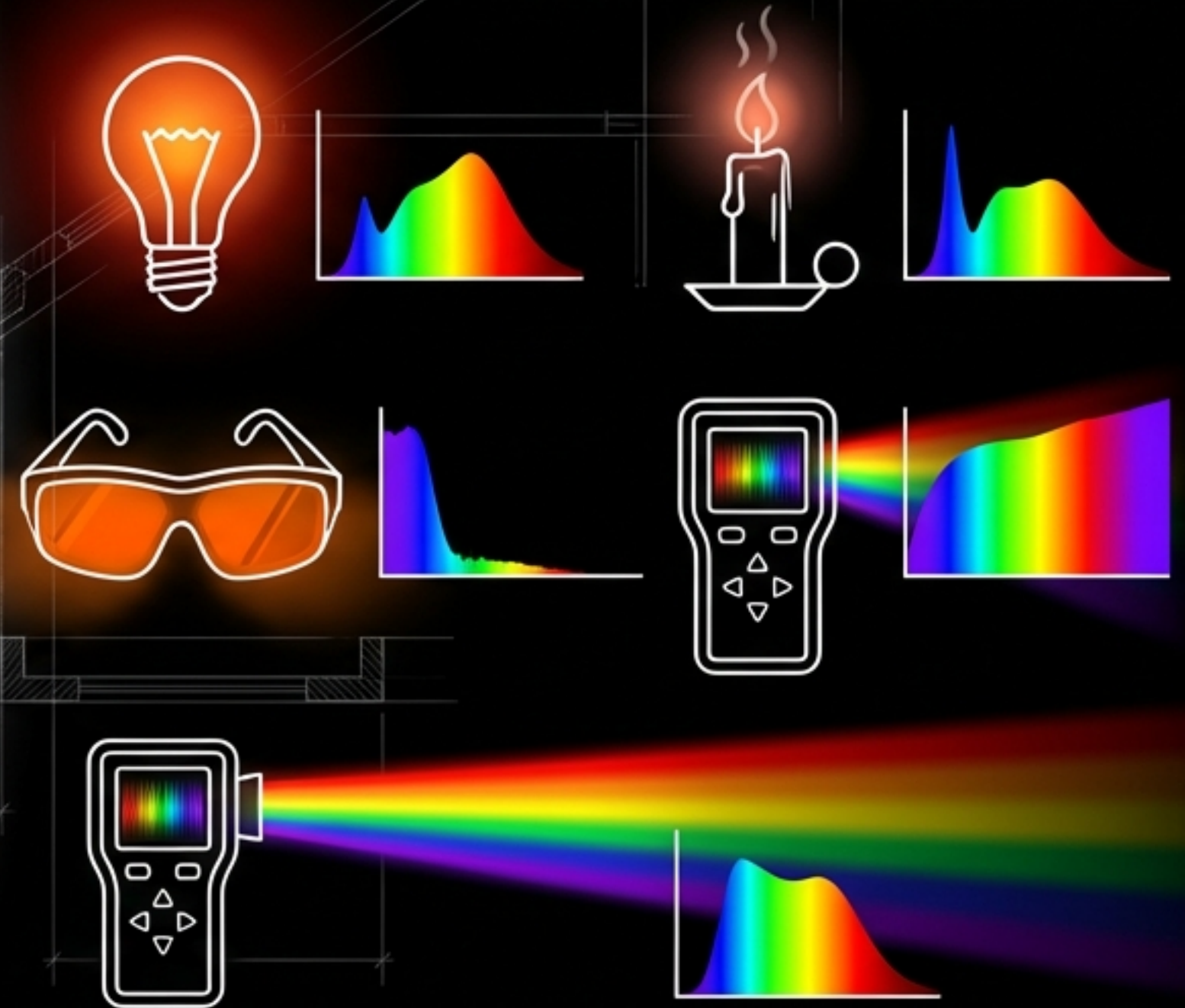
PROTOCOL IV: FILTER YOUR WORLD

Domestic Engineering & Gear Guide

TRASH



KEEP



- **Nighttime Defense:** Glasses must block Blue AND Green (400nm to 550nm) to protect melatonin. Verified: Dewalt DW0714 or Uvex Skyper SCT Orange.
- **Lighting:** Replace LEDs with Incandescent (Clear for day, Red/Amber for night). Eliminate flicker (PWM).
- **Testing:** Use a handheld spectrometer or "SpectraSnapp" app. If you see a "Blue Spike," it's junk light.

COGNITIVE SOVEREIGNTY

Escape the Zoo in Inter Regular

The Choice:

Live as a 'Zoo Animal' under the Alien Sun,
or reclaim your biology.

The Mantra:

Live in the sun.
Sleep in the dark.
Heal in the red.

The Goal:

The ultimate goal is not just health, but the ability to perceive truth.
Reconnecting to the sun restores the dopamine needed to think freely.

