

Spring at Lauritzen Gardens: How to Enjoy the Blooms All Season Long



Spring is here Spring is here Spring is here. As the calendar flips to March and April, there is a tangible shift in the Omaha air. The frost begins to retreat, the soil warms, and the city's premiere botanical destination, Lauritzen Gardens, starts its annual transformation into a living masterpiece. For those of us living in the Omaha, Lincoln, and Council Bluffs area, this is the signal to head outdoors and soak in the natural beauty that only a Midwestern spring can provide.

At Tint Advantage, we believe that enjoying the beauty of the season shouldn't stop when you step back inside your home. Whether you are walking through the rows of blooming daffodils or sitting in your living room looking out at your own backyard, the goal is clarity and comfort.

The Early Awakening: March and April

The season kicks off with a burst of yellow that defines the early spring experience. If you head to the Spring Flowering Walk during the first few weeks of the season, you are greeted by hundreds of thousands of daffodils. It is a sea of gold that stretches across the landscape, punctuated by the delicate heads of crocus and grape hyacinth.

There is something special about the way the light hits these early blooms. It's a crisp, bright light that feels fresh after a long winter. As you wander through the walk, you'll also notice the arrival of the magnolias. With a dozen different types, ranging from deep pinks to creamy whites, they provide a canopy of color that is second to none.



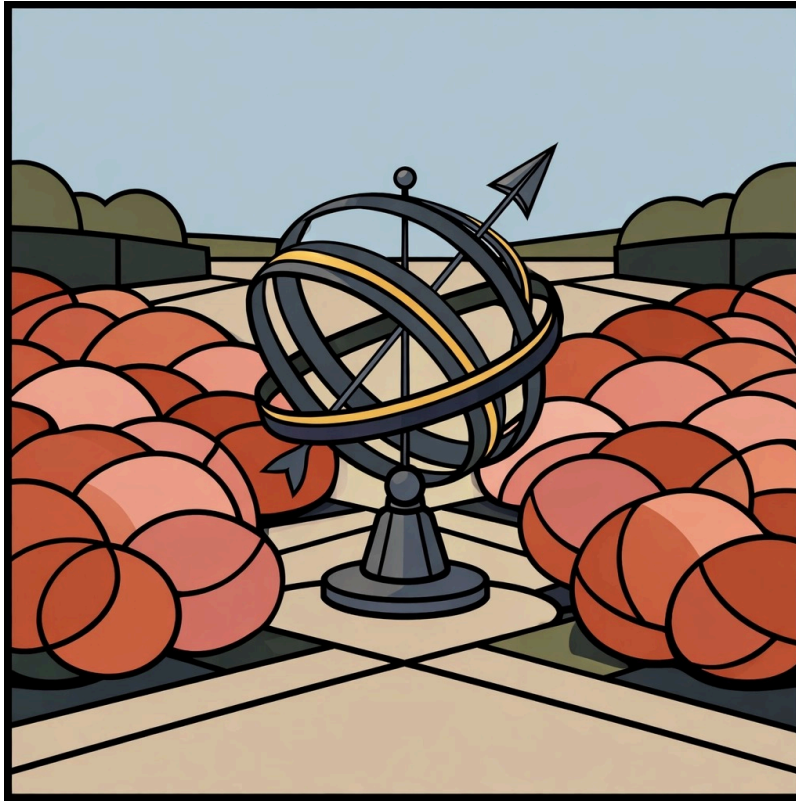
Accompanying the magnolias are the crabapples. Varieties like Harvest Gold and Snowdrift begin to show their personality, offering a flurry of petals that look almost like a spring snowfall when the wind catches them. For families, the StoryWalk is a fantastic way to engage. It turns a simple stroll into an interactive educational journey, allowing children to read along as they explore the greenery.

Spring blooms spring blooms spring blooms. The repetition of the season is what makes it so comforting. Year after year, these perennials return to remind us of the cycle of growth and the beauty of persistence.

Transitioning to the Mid-Season: Late April and May

As April begins to fade into May, the character of the gardens shifts from the bright yellows of the daffodils to the lush, heavy scents of the Peony Garden. This is often a favorite time for locals. Tree peonies, which begin their flourishing stage in late April, offer an intoxicating aroma that fills the air. These aren't your average garden-variety flowers; they are rich in color and massive in size, acting as a bridge between the delicate early spring and the robust summer to come.

Then, there is the Rose Garden. By the time the May warmth truly settles in, the 2,000 roses in this dedicated space come into full display. It is a sensory overload in the best way possible. While you are there, take a moment to look at the armillary sphere sundial. Designed by Nebraska artist Milt Heinrich, it's a perfect example of how art and nature can coexist.



For those who enjoy a bit of mechanical whimsy, the Model Railroad Garden comes alive in May. Watching the G-Scale model trains traverse miniature landscapes that mimic the Nebraska countryside is a joy for all ages. It's an activity that perfectly encapsulates the "lifestyle" focus of the gardens: it's about the experience, the movement, and the joy of the setting.

Finding Peace in the Shaded Retreats

If the spring sun gets a little too bright, the gardens offer several shaded sanctuaries. The Garden in the Glen is a masterpiece of texture and shadow. Here, you'll find hostas, astilbe, and bleeding hearts tucked away near a trickling stream. The presence of Japanese maples adds a layer of sophisticated color, with their red and green leaves providing a cool contrast to the vibrant flower beds elsewhere.

The view the view the view.

If you want a bit more of a rugged experience, the Woodland Trail provides a glimpse into a century-old forest. It offers stunning views of the Missouri River Valley, reminding us of the unique geography that defines our region. It is a place for quiet reflection, away from the more manicured displays, where the natural "Song of the Lark Meadow" showcases shifting colors as diverse plants bloom in a more wild, untamed fashion.

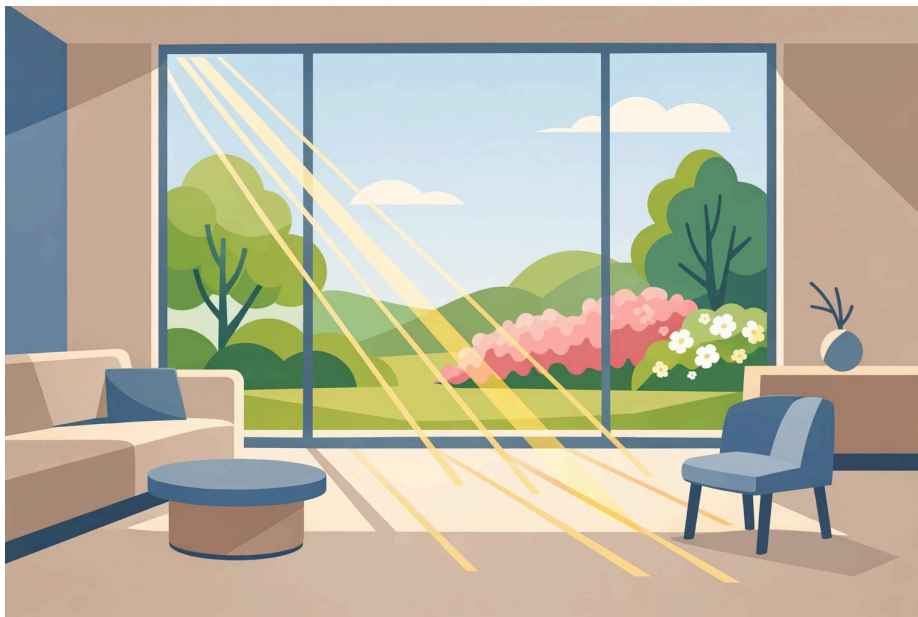
Bringing the Garden Inside: The View Without the Heat

After a day spent at Lauritzen Gardens, many of us return home inspired to enjoy our own views. We want to see the trees budding in our yards and the flowers popping up in our gardens. However, as the spring sun gains strength, it often brings unwanted heat and glare into our living spaces.

This is where the concept of the "indoor-outdoor lifestyle" becomes practical. You want the view, but you don't necessarily want the heat that comes with unfiltered sunlight streaming through your windows. Residential window film is the modern solution for homeowners who value their connection to the outside world but want to maintain a professional, comfortable environment inside.

Cool comfort cool comfort cool comfort.

By applying high-quality residential window film, you can enjoy the full bloom of spring from your favorite armchair without the discomfort of rising indoor temperatures. It's about balance. Just as the gardens use shade trees to protect delicate hostas, your home uses film to protect your interior, your furniture, and your eyes from the harshness of direct UV rays. It allows you to keep your curtains open and your eyes on the garden, effectively bringing the beauty of Lauritzen Gardens right into your own home.



Local Events and Community Connection

Spring at the gardens is also a time for community. Whether it's the Spring EGGstravaganza in April: a hit for the kids with its egg hunts and family activities: or the Spring Plant Sale in early May, there is always a reason to gather. The plant sale is a particularly great opportunity to take a piece of the garden home with you, selecting varieties that have been proven to thrive in our specific Nebraska climate.

For dog lovers, the "Leashes at Lauritzen" events are a highlight. Seeing our furry friends enjoying the trails and the scents of the season adds a layer of casual, friendly energy to the grounds. It's these activities that make the gardens feel like a true community hub rather than just a tourist destination.



As you plan your visits over the next 60 days, remember that the beauty is in the progression. What you see in mid-March will be entirely different from what you see in mid-May. Each visit offers a new perspective, a new bloom, and a new reason to appreciate the area we call home.

Clear skies clear skies clear skies.

Summary of Spring Highlights

- **March-April:** Daffodils, Magnolias, Crabapples, and the StoryWalk.
- **Late April-May:** Tree Peonies, 2,000 Roses, and the Model Railroad Garden.
- **All Season:** Woodland Trail views, Garden in the Glen serenity, and the beauty of the Missouri River Valley.

Enjoying the season is about being present in these moments. And when the day is done, ensuring your home remains a sanctuary where you can continue to enjoy the view in cool, glare-free comfort is the ultimate way to live the Nebraska spring lifestyle.

Powered by

© 2026 Tint Advantage. All rights reserved. No part of this publication may be reproduced, distributed, or transmitted in any form or by any means, including photocopying, recording, or other electronic or mechanical methods, without the prior written permission of the publisher, except in the case of brief quotations embodied in critical reviews and certain other noncommercial uses permitted by copyright law.

Copyright 2026 Tint Advantage All Rights Reserved Copyright 2026 Tint Advantage All Rights Reserved Copyright 2026 Tint Advantage All Rights Reserved