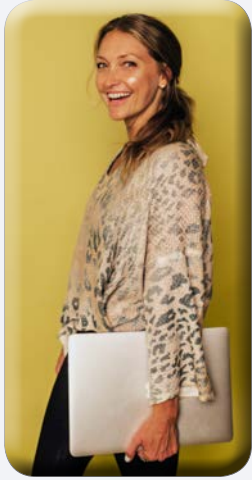


Local Spotlight with Danielle Real Estate & Ramblings: Real Talk in Real Estate

By Danielle Gannon
The Cardinal Contributing Writer



When you've been around long enough in this business, you get lucky. You cross paths with people who don't just excel at what they do, but bring their whole heart with them. That's exactly what I think

of when I talk about Michael Sivel and Jennifer Rinella, two dear colleagues, friends, and co-hosts of a podcast that's going to be your next favorite listen: Real Estate & Ramblings.

If you know The Sivel Group, you know they're not just about beautiful homes and big numbers (though the \$1 billion in team sales since 2016 is nothing to balk at). They're about relationships, community, and making the often overwhelming world of real estate feel downright human (and down-to-earth because that's who they are). Now, they've brought that magic to the mic.

Michael and Jennifer have been in the real estate game for a combined 50 years—25 each, but who's counting? They've sold homes, flipped properties, and developed (and currently developing) multi-use projects across the country. But at their core, they're people who love helping other people find their place in the world—whether that's a dream home or a fresh start.

The podcast, Real Estate & Ramblings, is exactly what the name promises: a smart, funny, real-world look at the housing market, life behind the scenes, and the stories that don't always make it into the listing description. You'll hear expert advice on buying, selling, investing, and renovating, but also conversations that veer off course in the best, rambling way. Think: heartfelt stories, hilarious sidebars, and the kind of wisdom you only get from two pros who have seen (and sold) it all.

Jennifer put it best: "We wanted to create something informative and fun. Yes, we'll cover market trends and insider tips—but we'll also ramble a bit. That's where the good stuff lives." And she's right. The good stuff is in the laughter, honesty, and genuine connection these two share. The fact that together with their partner Mark Malfara, they have brought a team together of the best agents in the Philadelphia and surrounding areas, speaks volumes in and of itself.

So, if you're in Philly, Bucks, the Main Line, or anywhere with Wi-Fi, do yourself a favor. Tune in. Subscribe. Share it with a friend who's house-hunting or just looking for a source of laughter, splashed with a touch of 215.

Find Real Estate & Ramblings on Apple Podcasts, Spotify, or wherever you like to listen. Find the Sivel Group, which has locations in Chestnut Hill, Main Line, and Rittenhouse, online at thesivelgroup.com. Follow on Instagram @thesivelgroup

Danielle Gannon is a local Bucks County entrepreneur. She is Founder & Creative Director of Local Spotlight with Danielle. Find her on IG @localspotlightwithdanielle www.localspotlightwithdanielle.com



tasty tweets

Jules Thin Crust Celebrates 20th Anniversary in Doylestown



Jules Thin Crust is proud to announce the 20th anniversary of their first location in Bucks County, Pennsylvania. The very first Jules location opened its doors in May of 2005 to the community in Doylestown with a fresh take on thin crust pizza. With a passion for local organic ingredients, community involvement, and genuine hospitality, Jules has grown to include seven locations in Pennsylvania and New Jersey in addition to launching a fresh version of fried chicken with their sister brand, Lovebird.

"People called us mad back in 2005, opening a new rectangular pizza concept in lovely quaint Doylestown. How wrong they were! The community welcomed us with open arms and we're forever grateful," said John Ordway co-founder.

The Jules story was born out of a passion for good food, family, and a love of all things local. John and Jan Ordway, finding a scarcity of restaurants to take their young daughters, decided to take matters into their own hands. Jules Thin Crust would offer a new spacious, modern, family friendly space where healthy, organic food would be paramount, unlike anything you've come to expect from a fast casual restaurant in 2005. That mission still rings true today across all the Jules and Lovebird locations.

"Best first job possible. I learned so

much and became so confident. It was an amazing environment to be in," said Anna Brown, former employee who is now at Pratt and Whitney.

Over the course of two decades, Jules has employed thousands of people from the community, many of whom are local students. In addition to helping many dedicated young people launch their careers, Jules has also shown a continual commitment to supporting local causes and fundraisers that range from high school football teams to Chop's Center for Celiac Disease. More than just good food, Jules provides a wonderful gathering space for friends and family to come together and create memories.

"My daughter absolutely loves working at Jules. She's made so many friends and has matured so well over the past three years. Working at Jules should be mandatory for all highschoolers," said Mary O'Brian, mother of Cathy O'Brian.

Jules Thin Crust has locations in Ardmore, Doylestown, Jenkintown, Newtown, North Wales, Princeton, and Wayne. Lovebird, operated by the same local ownership team, has locations in Blue Bell, Bryn Mawr, Doylestown, and Newtown. Learn more about Jules at julesthincrust.com and Lovebird at lovebirdpa.com.



LIBERTY POINTE
Rehabilitation and Healthcare Center

CARE CLOSE TO HOME

Located Conveniently in Doylestown



- SHORT TERM POST-ACUTE CARE
 - SPARK REHAB PROGRAM
 - 24/7 SKILLED NURSING CARE
 - LONG-TERM CARE
 - IV THERAPY AND WOUND CARE
 - TRANSPORTATION SERVICES
- PHYSICAL THERAPY, OCCUPATIONAL, AND SPEECH THERAPY 7 DAYS A WEEK



252 BELMONT AVE, DOYLESTOWN, PA 18901
(215) 348-2983
WWW.LIBERTYPOINTERHC.COM