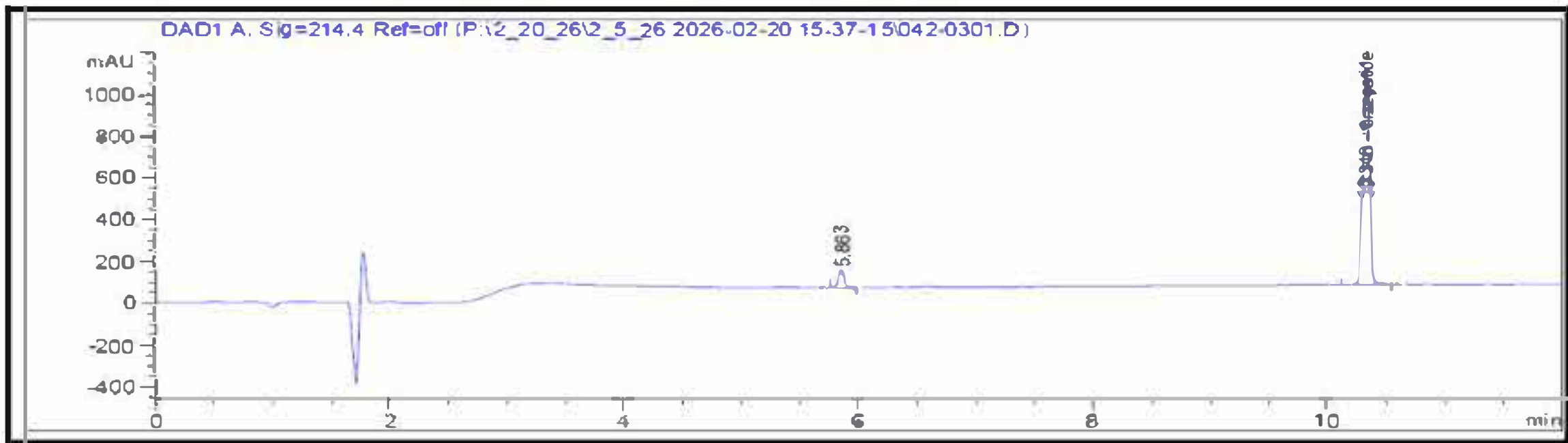


Certificate of Analysis

GLP2-T 10 mg

Report To:
Peptide Circle HQ LLC

Compound: GLP2-T
Amount: 10 mg
Laboratory ID: V260209-11 005
Date Reported: 2/24/2026
Lot Number: 251228TZ303



Analysis	Method	Result
Chromatographic Purity	HPLC-UV/VIS	>99.80% + 0.18%
Assay	HPLC-UV/VIS	16.08 mg




Report By: Dustin Newman, Laboratory Director on 2/24/2026



Approved By: Tori Johnson, Operations Manager on 2/24/2026

Please consult A2LA Certificate #6377.01.01 for a list of accredited tests. Samples were received in acceptable condition. The result(s) in this report relate only to the portion of the sample(s) tested. All analyses were performed consistent with the Vanguard Laboratory Quality Management System. Vanguard Laboratory and its staff did not observe or participate in the sample selection process, and cannot confirm the authenticity of the sample or its representativeness of the associated lot/batch.



Vanguard Laboratory
2635 Parkmont Ln
Olympia, Wa 98502
360-967-7010

Certificate of Analysis

GLP2T 10 mg

Report To:
Peptide Circle HQ LLC

Compound: GLP2-T
Amount: 10mg
Laboratory ID: V260209-11 005
Date Reported: 2/24/2026
Lot Number: 251228TZ303

Analyte	Method	LOQ (ppm)	Result (ppm)
Chromium (Cr)	ICP-MS	0.05	ND
Arsenic (As)	ICP-MS	0.01	ND
Cadmium (Cd)	ICP-MS	0.01	ND
Lead (Pb)	ICP-MS	0.01	0.01
Mercury (Hg)	ICP-MS	0.005	ND

Run ID: 260118

Analysis	Method	Result
Endotoxins	LAL	Pass - <5.00 EU/mg*
Sterility	USP <71>	Pass - No Growth Detected

*Pass/Fail criteria based on the USP/FDA threshold of 5 EU/kg (350 EU total for a 70 kg adult)

Report By: Dustin Newman, Laboratory Director on 2/24/2026

Approved By: Tori Johnson, Operations Manager on 2/24/2026

ND: Non-Detect

LOD: Limit of Quantification



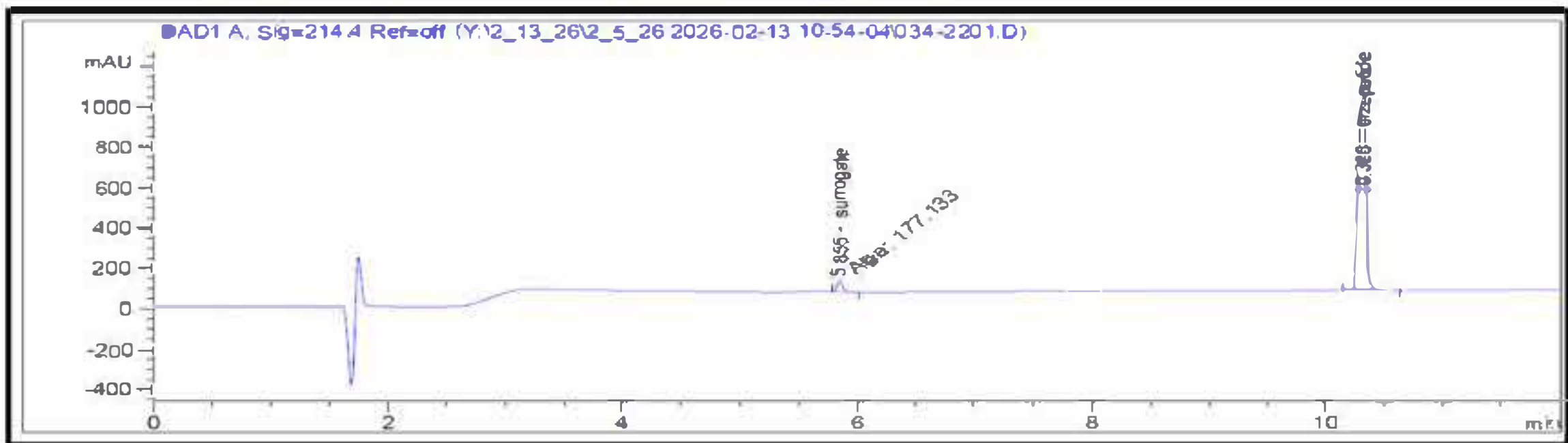
Please consult A2LA Certificate #6377.01.01 for a list of accredited tests. Samples were received in acceptable condition. The result(s) in this report relate only to the portion of the sample(s) tested. All analyses were performed consistent with the Vanguard Laboratory Quality Management System. Vanguard Laboratory and its staff did not observe or participate in the sample selection process, and cannot confirm the authenticity of the sample or its representativeness of the associated lot/batch.

Certificate of Analysis

GLP2-T 30 mg

Report To:
Peptide Circle HQ LLC

Compound: GLP2T
Amount: 30 mg
Laboratory ID: V260209-11 003
Date Reported: 2/24/2026
Lot Number: 260218RT403



Analysis	Method	Result
Chromatographic Purity	HPLC-UV/VIS	>99.80% + 0.18%
Assay	HPLC-UV/VIS	27.90 mg



[Signature]

Report By: Dustin Newman, Laboratory Director on 2/24/2026

[Signature]

Approved By: Tori Johnson, Operations Manager on 2/24/2026

Please consult A2LA Certificate #6377.01.01 for a list of accredited tests. Samples were received in acceptable condition. The result(s) in this report relate only to the portion of the sample(s) tested. All analyses were performed consistent with the Vanguard Laboratory Quality Management System. Vanguard Laboratory and its staff did not observe or participate in the sample selection process, and cannot confirm the authenticity of the sample or its representativeness of the associated lot/batch.



Vanguard Laboratory
2635 Parkmont Ln
Olympia, Wa 98502
360-967-7010

Certificate of Analysis

GLP2-T 30 mg

Report To:
Peptide Circle HQ LLC

Compound: GLP2T
Amount: 30 mg
Laboratory ID: V260209-11 003
Date Reported: 2/24/2026
Lot Number: 260218RT403

Analyte	Method	LOQ (ppm)	Result (ppm)
Chromium (Cr)	ICP-MS	0.05	ND
Arsenic (As)	ICP-MS	0.01	ND
Cadmium (Cd)	ICP-MS	0.01	ND
Lead (Pb)	ICP-MS	0.01	ND
Mercury (Hg)	ICP-MS	0.005	ND

Run ID: 260118

Analysis	Method	Result
Endotoxins	LAL	Pass - <5.00 EU/mg*
Sterility	USP <71>	Pass - No Growth Detected

*Pass/Fail criteria based on the USP/FDA threshold of 5 EU/kg (350 EU total for a 70 kg adult)

Report By: Dustin Newman, Laboratory Director on 2/24/2026

Approved By: Tori Johnson, Operations Manager on 2/24/2026

ND: Non-Detect

LOD: Limit of Quantification



Please consult A2LA Certificate #6377.01.01 for a list of accredited tests. Samples were received in acceptable condition. The result(s) in this report relate only to the portion of the sample(s) tested. All analyses were performed consistent with the Vanguard Laboratory Quality Management System. Vanguard Laboratory and its staff did not observe or participate in the sample selection process, and cannot confirm the authenticity of the sample or its representativeness of the associated lot/batch.