

# ONE 2026 CONFERENCE

## REGISTRATION & VENUE INFORMATION

M Resort & Casino  
South Las Vegas, NV  
May 4-6, 2026

SCAN ME



Register & Learn More at: [oneconf26.com](https://oneconf26.com)

# Dear Future ONE Conference Attendee,

Thank you for taking a moment to learn more about the ONE Conference. I'm truly glad you're here.

The ONE Conference was created around a simple but powerful truth: **in the NICU, one nurse, one connection, one moment can change the trajectory of a baby's life.** Every day, NICU professionals, like you, make countless decisions that protect fragile, developing brains and support families through some of the most difficult moments of their lives. Yet too often, the voices closest to this work are not the ones leading the conversation.

This conference was created to change that.

At the ONE Conference, **nursing expertise is not an afterthought;** it is the foundation. Our sessions focus on NeuroNICU care, neuro-protective, small baby care, and the real-world challenges faced by NICU teams every day. We bring together clinicians who are passionate about protecting the developing brain, advancing evidence-based practice, and strengthening the connection between science and bedside care.

**But what makes this conference truly special goes beyond the lectures.** It's the energy that happens when people who share the same mission gather in one place. It's the conversations between sessions, the ideas sparked over coffee, and the feeling of realizing you are not the only one pushing for better care in your unit. Those moments of connection are often the catalyst for the changes that follow.

**If you have ever felt like the only ONE** advocating for brain-focused care, neuroprotective practices, or a more thoughtful NICU culture, **you will find your people here.**

I look forward to welcoming you to Las Vegas, and sharing this experience together.

Warmly,



Kathi Randall, MSN, NNP-BC, CNS, NTMNC  
President, Synapse Care Solutions

# CONFERENCE AGENDA

## Monday, May 4

- 10:00 am** Registration Open
- 11:00 am** Welcome
- 11:15 am** **Being the ONE in 2026**  
*Kathi Randall, MSN, NNP-BC, CNS, NTMNC*
- 12:00 pm** **HIE - A Parent's Perspective: Current Care & Future Directions**  
*Betsy Pilon, Hope for HIE*
- 12:45 pm** Light Lunch / Exhibit Hall Open
- 1:30pm** **Nest to Nurture: Optimizing Neurodevelopment for ELBW Infants from Delivery to 12 Months**  
*Courtney MacDowell, NNP & Katie Hunt, NNP*
- 2:15 pm** **Remote NeuroNICUs & Ai to Improve Neonatal Seizure Management**  
*Gabriel Variane, MD, PhD*
- 3:30 pm** Coffee Break / Exhibit Hall Open
- 4:00 pm** **Just Be, Do With, Hit Refresh™**  
*Kara Ann Waitzman, OTR/L, CNT, NTMTC*
- 5- 7 pm** Sponsor Reception - Lite Bites provided

## Tuesday, May 5 - Morning Sessions

- 7:00 am** Breakfast / Exhibit Hall Open
- 8:00 am** Welcome
- 8:15 am** **It Takes One: Reimagining Continuity and Advocacy in Neonatal Neurologic Care - The NeuroNICU Navigator Role**  
*Mandy Sitton, BSN, RN*
- 9:00 am** **Skin Care Challenges in the ELBW infant**  
*Media Esser, PhD, NNP-BC, C-WON*
- 9:45 am** Break / Exhibit Hall Open
- 10:15am** **Protecting the Newborn Microbiome: How NICU Nursing Care Shapes Lifelong Health**  
*Amanda Williams, MSN, ACNP, CNS, RNC-NIC, C-ELBW*
- 11:00 am** **Pain, Stress & Difficult IV Access**  
*Katie Fedor & Rachelle Sey*
- 11:45 am** **PANEL: AI Innovation**  
*Panel of MDs and RNs*



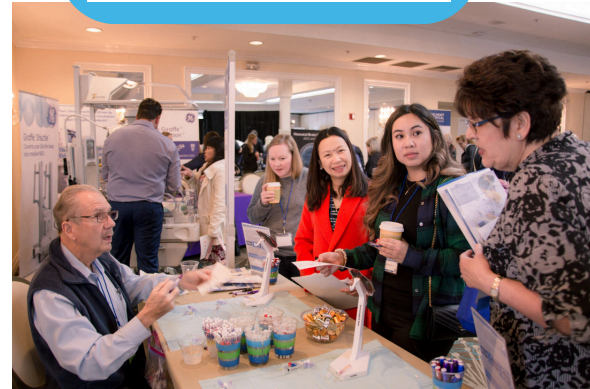
[REGISTER TODAY](#)  
[CLICK HERE](#)

# CONFERENCE AGENDA

## Tuesday, May 5 - Afternoon Sessions

- 12:30 pm** Lunch / Exhibit Hall Open
- 1:30 pm** **Hemodynamics & IVH Prevention**  
*Khorshid Mohammad, MD, MSc, FABP, FRCP(Edin),  
FRCP(C Neonatology), NNCC diplomate (UCNS)*
- 2:15 pm** Break - Final Exhibit Hours
- 2:45 pm** Sponsor Thank You & Give Aways
- 3:00 pm** **Leadership Lives at the Bedside: Caring for the Heart and Brain in the NICU**  
*Laila Wazneh, MScN, NNP*
- 3:45 pm** **Developmental Care Rounds**  
*Rachelle Sey, PhD, APRN, CNS, RNC-NIC*
- 4:15 pm** **Where Do I Belong? Reclaiming Nursing's Humanity, Agency, and Connection in a Metric-Driven NICU**  
*Mary Coughlin, MS, NNP-NCC-E*
- 5:00 pm** Wrap Up / Adjourn
- 6:30 pm** Night Out In Vegas - On Your Own

[SPONSORSHIP & EXHIBITOR  
OPPORTUNITIES - CLICK HERE](#)

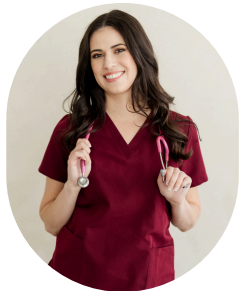


## Wednesday, May 6

- 7:00 am** Roundtable Breakfast Networking - *Topics to be determined by YOU*
- 8:30 am** Coffee Break
- 9:00 am** **NeuroNICU Poster/Podium Session**
- 10:00 am** Coffee Break
- 10:30 am** **Small Baby Poster/Podium Session**
- 11:30 am** **Growth through Imperfect Action: What Happens When You Stop Waiting Until You Feel Ready**  
*Amanda Williams, MSN, ACNP, CNS, RNC-NIC, C-ELBW*
- 12:15pm** Wrap Up / Evals
- 1:00pm** Adjourn- See you in 2027!



[SUBMIT YOUR POSTER ABSTRACT  
CLICK HERE](#)



**Amanda Williams**

MSN, ACNP, CNS, RNC-NIC, C-ELBW



**Betsy Pilon**

Hope for HIE



**Gabriel Variane**

MD, PhD



**Kara Ann Waitzman**

OTR/L, CNT, NTMTC



**Kathi Randall**

MSN, NNP-BC, CNS, NTMNC



**Katie Fedor**

BSN, RNC-NIC, C-NNIC



**Khorshid Mohammad**

MD, MSc, FABP, FRCP(Edin),  
FRCPC(Neonatology), NNCC diplomate (UCNS)



**Laila Wazneh**

MScN, NNP



**Mandy Sitton**

BSN, RN



**Mary Coughlin**

MS, NNP-NCC-E



**Media Esser**

PhD, NNP-BC, APRN, CWCN



**Rachelle Sey**

PhD, APRN, CNS, RNC-NIC

# LEARNING OBJECTIVES

1. Identify at least one current controversy or evolving guideline impacting the care of infants with HIE, IVH, or neonatal seizures.
2. Describe at least one interdisciplinary strategy that improves collaboration and neurologic outcomes in the NICU.
3. Outline one application of AI or telehealth in neonatal neuromonitoring or seizure management.
4. Describe one care model or program that is designed to support optimal neurodevelopment from delivery through NICU discharge.
5. Identify one strategy to incorporate the parent perspective into NICU care, research, or quality improvement efforts.
6. Outline one quality improvement initiative that could be implemented in your NICU.
7. Identify one actionable strategy to strengthen your leadership or professional impact within the NICU.

# REGISTRATION FEES

**Registration: \$750**

**Early Registration: \$650**

**(Until March 15, 2026)**



[REGISTER TODAY](#)

[CLICK HERE](#)

## Optional Add On's:

**VIP Seating & Syllabus: \$100**

**Printed Syllabus: \$50**

# CEU INFORMATION

This course has been approved for up to 16 contact hours of Continuing Nursing Education by the California Board of Registered Nursing, CE Provider # 15417.

## **REFUND POLICY**

Due to the high costs of putting on a conference like this, the registration fees are transferable but not refundable, and subject to a \$50 administrative fee.

If you are unable to transfer your registration, you will receive the on-demand lecture replays once they are made available.

All cancellations and transfer requests must be submitted for approval by emailing: [info@synapsecare.com](mailto:info@synapsecare.com)

# ONE CONFERENCE 2026 PLANNING COMMITTEE



**Alison Thomas**  
MSN, RNC-NIC, C-NPT



**Amanda Williams**  
MSN, ACNP, CNS, RNC-NIC, C-ELBW



**Beverly Walti**  
MSN, RNC-NIC, CPNP, CNS



**Charla Parkinson**  
MS, RNC-NIC



**Katie Fedor**  
BSN, RNC-NIC, C-NNIC



**Lauren Heimall**  
MSN, RNC-NIC, C-NNIC, PCNS-BC



**Media Esser**  
PhD, NNP-BC, APRN, CWCN



**Melinda Porter**  
MSN, CNS, NNP-BC



**Natalie Hunt**  
PhD, CRNP, NNP-BC, C-NNIC



**Rachelle Sey**  
PhD, APRN, CNS, RNC-NIC

## ONE CONFERENCE EXECUTIVE BOARD



**Jayne Solomon**  
MSN, NNP-BC, C-ELBW, C-NNIC



**Shannon Tinkler**  
MSN, CNS, RNC-NIC



**Kathi Randall**  
MSN, NNP-BC, CNS, NTMNC



# M RESORT SPA CASINO

12300 Las Vegas Blvd S, Henderson, NV 89044

## \$149/NIGHT

We've negotiated an exclusive \$149/night rate (plus taxes and resort fees) for all ONE Conference attendees and exhibitors.

**[CLICK HERE](#) or  
Call the Reservations  
Department at:  
877-673-7678  
and mention group code:  
STOC26**

### CHECK IN/OUT:

- Check-in 3 p.m.
- Check-out 11 a.m.

## PARKING & SHUTTLE INFORMATION:

All guests enjoy complimentary valet and self-parking.

Shuttle service to Harry Reid International Airport is included in your resort fee and runs daily from 7 AM to 7 PM by reservation. We recommend booking at least 24 hours in advance.

For questions or to reserve your shuttle, please call 702-797-1000.

**[BOOK SHUTTLE NOW](#)**



*Group room rates will be offered for (2) days prior and (2) days following the established room block.*

*The cut-off date for the group rate is Thursday, April 2, 2026 by 5pm PST.*

# THANK YOU TO OUR 2026 CORPORATE SPONSORS



**CREATIVE THERAPY  
CONSULTANTS** 

---

**INFANT-DRIVEN EDUCATION**



**ceribell**<sup>®</sup>  
Clarity When It's Critical



**Dräger**

**embrace**<sup>®</sup>  
 **aspect imaging**

 **international  
BIOMEDICAL**<sup>®</sup>

**NEOTECH**<sup>®</sup>  
Products LLC

 **NeuroBell**

 **Prolacta**<sup>®</sup>  
BIOSCIENCE  
Advancing the Science of Human Milk™



 **URGO**  
MEDICAL  
Healing people<sup>®</sup>

**HOPE** **for HIE**  
awareness • education • support