

# ONE 2026 CONFERENCE

## EXHIBITOR & PARTNER PROSPECTUS

M Resort & Casino  
South Las Vegas, NV  
May 4-6, 2026

# Dear Future ONE Conference Partner,

Thank you for your interest in being part of the ONE Conference. I'm truly glad you're here.

The ONE Conference was created around a simple but powerful idea: one nurse, one connection, one moment can change care. And the environment we gather in matters.

## **Why Las Vegas?**

We chose Vegas because it's:

- Easy to get to from nearly anywhere
- Affordable for both attendees and exhibitors
- Endless entertainment options so that attendees can come and extend their time

When logistics are simpler, more people can say yes – and that leads to better participation and stronger engagement.

## **Why the M Resort?**

We intentionally selected The M Resort Spa & Casino because it offers something rare in Las Vegas.

- A quiet, contained, and calm setting
- A layout that keeps education, attendees, and exhibitors connected in one space
- Lower fees than typical Las Vegas Strip properties with union requirements

Unlike large convention centers or Strip hotels filled with constant distractions, the M Resort allows for real conversations, meaningful engagement, and time to actually connect with attendees who are present, focused, and curious.

## **Our Attendees**

The ONE Conference attracts NICU clinicians, educators, leaders, and unit champions who are deeply invested in improving care and bringing practical solutions back to their teams. These attendees value education, evidence, and tools they can actually use – and they come ready to engage.

The nurses (and other NICU professionals) who attend the ONE Conference are not the “walk-by-and-grab-a-freebie” attendees. They are the linger, learn, ask questions, and build relationships kind of people.

## **We Couldn't Do This Without You!**

Exhibitors are not an afterthought at the ONE Conference — you are a valued part of the experience. We intentionally design our exhibit space to encourage interaction, conversation, and collaboration between attendees and partners who share the same goal: improving care for babies and families.

Thank you for considering being part of the ONE Conference. I look forward to welcoming you in Las Vegas.

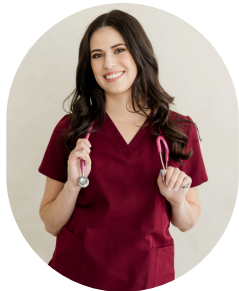
Warmly,



Kathi Randall, MSN, NNP-BC, CNS, NTMNC  
Synapse Care Solutions

# WE LOOK FORWARD TO SEEING YOU IN LAS VEGAS





**Amanda Williams**

MSN, ACNP, CNS, RNC-NIC, C-ELBW



**Betsy Pilon**

Hope for HIE



**Gabriel Variane**

MD, PhD



**Kara Ann Waitzman**

OTR/L, CNT, NTMTC



**Kathi Randall**

MSN, NNP-BC, CNS, NTMNC



**Katie Fedor**

BSN, RNC-NIC, C-NNIC



**Khorshid Mohammad**

MD, MSc, FABP, FRCP(Edin),  
FRCPC(Neonatology), NNCC diplomate (UCNS)



**Laila Wazneh**

MScN, NNP



**Mandy Sitton**

BSN, RN



**Mary Coughlin**

MS, NNP-NCC-E



**Media Esser**

PhD, NNP-BC, APRN, CWCN



**Rachelle Sey**

PhD, APRN, CNS, RNC-NIC

# CONFERENCE AGENDA

## Monday, May 4

- 10:00 am** Registration Open
- 11:00 am** Welcome
- 11:15 am** **Being the ONE in 2026**  
*Kathi Randall, MSN, NNP-BC, CNS, NTMNC*
- 12:00 pm** **HIE - A Parent's Perspective: Current Care & Future Directions**  
*Betsy Pilon, Hope for HIE*
- 12:45 pm** Light Lunch / Exhibit Hall Open
- 1:30pm** **Nest to Nurture: Optimizing Neurodevelopment for ELBW Infants from Delivery to 12 Months**  
*Courtney MacDowell, NNP & Katie Hunt, NNP*
- 2:15 pm** **Remote NeuroNICUs & Ai to Improve Neonatal Seizure Management**  
*Gabriel Variane, MD, PhD*
- 3:30 pm** Coffee Break / Exhibit Hall Open
- 4:00 pm** **Just Be, Do With, Hit Refresh™**  
*Kara Ann Waitzman, OTR/L, CNT, NTMTC*
- 5- 7 pm** Sponsor Reception - Lite Bites provided

## Tuesday, May 5 - Morning Sessions

- 7:00 am** Breakfast / Exhibit Hall Open
- 8:00 am** Welcome
- 8:15 am** **It Takes One: Reimagining Continuity and Advocacy in Neonatal Neurologic Care - The NeuroNICU Navigator Role**  
*Mandy Sitton, BSN, RN*
- 9:00 am** **Skin Care Challenges in the ELBW infant**  
*Media Esser, PhD, NNP-BC, C-WON*
- 9:45 am** Break / Exhibit Hall Open
- 10:15am** **Protecting the Newborn Microbiome: How NICU Nursing Care Shapes Lifelong Health**  
*Amanda Williams, MSN, ACNP, CNS, RNC-NIC, C-ELBW*
- 11:00 am** **Pain, Stress & Difficult IV Access**  
*Katie Fedor & Rachelle Sey*
- 11:45 am** **PANEL: AI Innovation**  
*Panel of MDs and RNs*



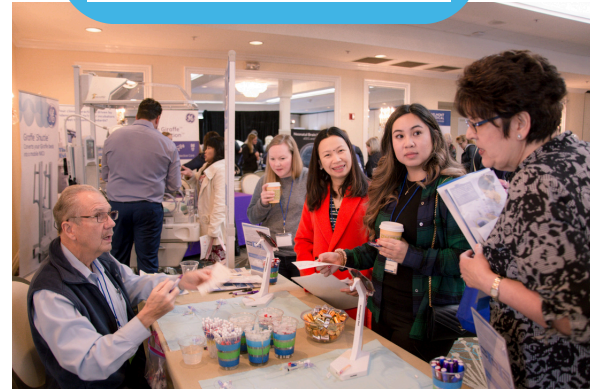
[REGISTER TODAY](#)  
[CLICK HERE](#)

# CONFERENCE AGENDA

## Tuesday, May 5 - Afternoon Sessions

- 12:30 pm** Lunch / Exhibit Hall Open
- 1:30 pm** **Hemodynamics & IVH Prevention**  
*Khorshid Mohammad, MD, MSc, FABP, FRCP(Edin),  
FRCP(C Neonatology), NNCC diplomate (UCNS)*
- 2:15 pm** Break - Final Exhibit Hours
- 2:45 pm** Sponsor Thank You & Give Aways
- 3:00 pm** **Leadership Lives at the Bedside: Caring for the Heart and Brain in the NICU**  
*Laila Wazneh, MScN, NNP*
- 3:45 pm** **Developmental Care Rounds**  
*Rachelle Sey, PhD, APRN, CNS, RNC-NIC*
- 4:15 pm** **Where Do I Belong? Reclaiming Nursing's Humanity, Agency, and Connection in a Metric-Driven NICU**  
*Mary Coughlin, MS, NNP-NCC-E*
- 5:00 pm** Wrap Up / Adjourn
- 6:30 pm** Night Out In Vegas - On Your Own

[SPONSORSHIP & EXHIBITOR  
OPPORTUNITIES - CLICK HERE](#)



## Wednesday, May 6

- 7:00 am** Roundtable Breakfast Networking - *Topics to be determined by YOU*
- 8:30 am** Coffee Break
- 9:00 am** **NeuroNICU Poster/Podium Session**
- 10:00 am** Coffee Break
- 10:30 am** **Small Baby Poster/Podium Session**
- 11:30 am** **Growth through Imperfect Action: What Happens When You Stop Waiting Until You Feel Ready**  
*Amanda Williams, MSN, ACNP, CNS, RNC-NIC, C-ELBW*
- 12:15pm** Wrap Up / Evals
- 1:00pm** Adjourn- See you in 2027!



[SUBMIT YOUR POSTER ABSTRACT  
CLICK HERE](#)

# ONE CONFERENCE 2026 PLANNING COMMITTEE



**Alison Thomas**  
MSN, RNC-NIC, C-NPT



**Amanda Williams**  
MSN, ACNP, CNS, RNC-NIC, C-ELBW



**Beverly Walti**  
MSN, RNC-NIC, CPNP, CNS



**Charla Parkinson**  
MS, RNC-NIC



**Katie Fedor**  
BSN, RNC-NIC, C-NNIC



**Lauren Heimall**  
MSN, RNC-NIC, C-NNIC, PCNS-BC



**Media Esser**  
PhD, NNP-BC, APRN, CWCN



**Melinda Porter**  
MSN, CNS, NNP-BC



**Natalie Hunt**  
PhD, CRNP, NNP-BC, C-NNIC



**Rachelle Sey**  
PhD, APRN, CNS, RNC-NIC

## ONE CONFERENCE EXECUTIVE BOARD



**Jayne Solomon**  
MSN, NNP-BC, C-ELBW, C-NNIC



**Shannon Tinkler**  
MSN, CNS, RNC-NIC



**Kathi Randall**  
MSN, NNP-BC, CNS, NTMNC



# 2026 EXHIBIT HOURS:

## MONDAY, MAY 4

- Registration/Exhibit Hall **10 - 11am**
- Snacks/Exhibit Hall **12:45 - 1:30pm**
- Coffee Break/Exhibit Hall **3:30 - 4pm**
- Reception/Exhibit Hall **5 - 7pm**

## TUESDAY, MAY 5

- Breakfast/Exhibit Hall **7 - 8am**
- Break/Exhibit Hall **9:45 - 10:15am**
- Lunch/Exhibit Hall **12:30 - 1:30pm**
- Break/Exhibit Hall **2:15 - 2:45pm**
- **Sponsor Thank You & Give Aways**

\* We'd love for you to contribute a gift for give aways

# EXHIBITOR SCHEDULE

## SET UP:

- Sunday, May 3 from 3pm to 6pm\*
- Monday, May 4 from 6 - 9am
- Exhibits open at 10am Monday, May 4

\* By appointment after 6pm on Sunday

## TEAR DOWN:

- Tuesday, May 5 starting at 2:15pm

- *More than 50% of attendees typically not local*
- *More than 50 different NICUs represented at past conferences*
- *All attendees visit Exhibitor area and can interact on our conference app before, during and after the conference!*



**WHERE NICU NURSES AND PROFESSIONALS UNITE TO CHANGE THE FUTURE OF ALL BABIES IN THE NICU**



# EXHIBITOR BOOTH RATES

## \$2,500 STANDARD EXHIBITOR

Payment methods include credit card, ACH or check.

### INCLUDES:

#### BOOTH:

- 6-foot table with table cloth, 2 chairs \*
- 2 Representatives per booth (extra badges can be purchased)

#### EXPOSURE:

- Full page color advertisement in digital and printed syllabus
- One Square on Exhibitor Bingo Card
- Company logo displayed on the ONE Conference website

#### NETWORKING:

- Two days of meals and networking with attendees during breaks
- Participation in Monday night Welcome Reception (5:30 to 7:00 pm)

[SIGN UP NOW](#)

\*Power drop and electrical power may be extra

# EXHIBITOR ADDITIONAL LEVELS & ADD ONS

## PRIME EXHIBITOR LEVEL - \$7,500

### Includes the following added benefits:

- Choice of booth placement
- 3 Representatives at the booth
- **Private Breakfast Symposium (30 participants)**
- Included in Online Directory
- Co-branded 1 hour webinar with Synapse
- Seat or tote drop

## A LA CARTE OPPORTUNITIES

- **Sponsored Breakfast Symposium - \$2,500**  
*Focus group, directed education or product demo  
Up to 20 participants - Breakout Room  
(4 spaces available)*
- **1 Hour Sponsored Webinar - \$2,500**  
*Directed education with CEs or product demo  
Replay will be posted in our ONE Conference  
Community App for 1 year*
- **Poster Session Sponsor - \$2,000**  
*Branded signage at Poster Area + recognition in  
conference agenda - ONLY 1 AVAILABLE*
- **Coffee Break Sponsor - \$2,000**  
*Branded signage at coffee stations + recognition in  
conference agenda*
- **Attendee Bag Sponsor - \$1,500**  
*Your logo on every attendee tote bag -  
ONLY 1 AVAILABLE*
- **Attendee Lanyard Sponsor - \$1,000**  
*Your logo printed on all attendee name badge  
lanyards - ONLY 1 AVAILABLE*
- **Scholarship Fund Sponsor - \$1,000**  
*Highlighted in syllabus as "ONE Nurse  
Champion Sponsor"*
- **Sponsored Solo Email - \$1,000**  
*Solo sponsored email to our conference list*
- **Online Sponsor Directory - \$500**  
*Your Company information listed inside our  
Conference Community for one year - can add  
hyperlinks, embed videos and add downloadable  
flyers*
- **Tote Bag Insert - \$500**  
*Add a flyer or brochure to the attendee bag*
- **Additional Sponsor Badges - \$375**  
*Includes access to exhibitor area and breaks*

**RESERVE YOUR SPACE TODAY**

Your space is reserved once you complete the online registration form





# M RESORT SPA CASINO

12300 Las Vegas Blvd S, Henderson, NV 89044

**\$149/NIGHT**

We've negotiated an exclusive \$149/night rate (plus taxes and resort fees) for all ONE Conference attendees and exhibitors.

[CLICK HERE](#) or

**Call the Reservations**

**Department at:**

**877-673-7678**

**and mention group code:**

**STOC26**

## CHECK IN/OUT:

- Check-in 3 p.m.
- Check-out 11 a.m.

## PARKING & SHUTTLE INFORMATION:

All guests enjoy complimentary valet and self-parking.

Shuttle service to Harry Reid International Airport is included in your resort fee and runs daily from 7 AM to 7 PM by reservation. We recommend booking at least 24 hours in advance.

For questions or to reserve your shuttle, please call 702-797-1000.

[\*\*BOOK SHUTTLE NOW\*\*](#)



*Group room rates will be offered for (2) days prior and (2) days following the established room block.*

*The cut-off date for the group rate is Thursday, April 2, 2026 by 5pm PST.*

# SOME OF OUR 2026 COMMITTED SPONSORS



**CREATIVE THERAPY  
CONSULTANTS** 

---

**INFANT-DRIVEN EDUCATION**



**ceribell**<sup>®</sup>  
Clarity When It's Critical



**Dräger**

**embrace**<sup>®</sup>  
 **aspect**imaging

 **international  
BIOMEDICAL**<sup>®</sup>

**NEOTECH**<sup>®</sup>  
Products LLC

 **NeuroBell**

 **Prolacta**<sup>®</sup>  
BIOSCIENCE  
Advancing the Science of Human Milk™



 **URGO**  
MEDICAL  
Healing people<sup>®</sup>

**HOPE** **for HIE**  
awareness • education • support