



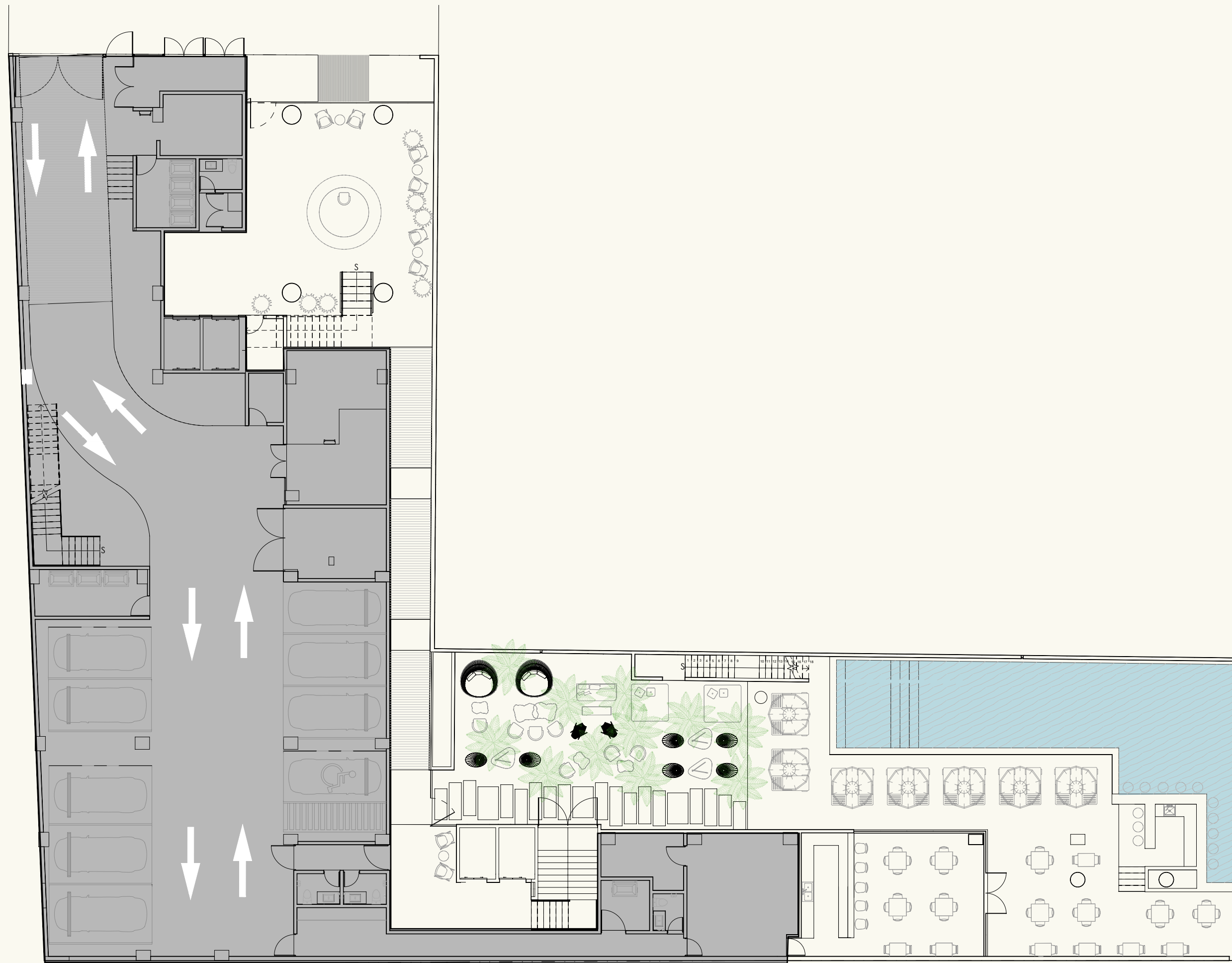


THE CARIBBEAN
KNOCKS ON YOUR *DOOR*

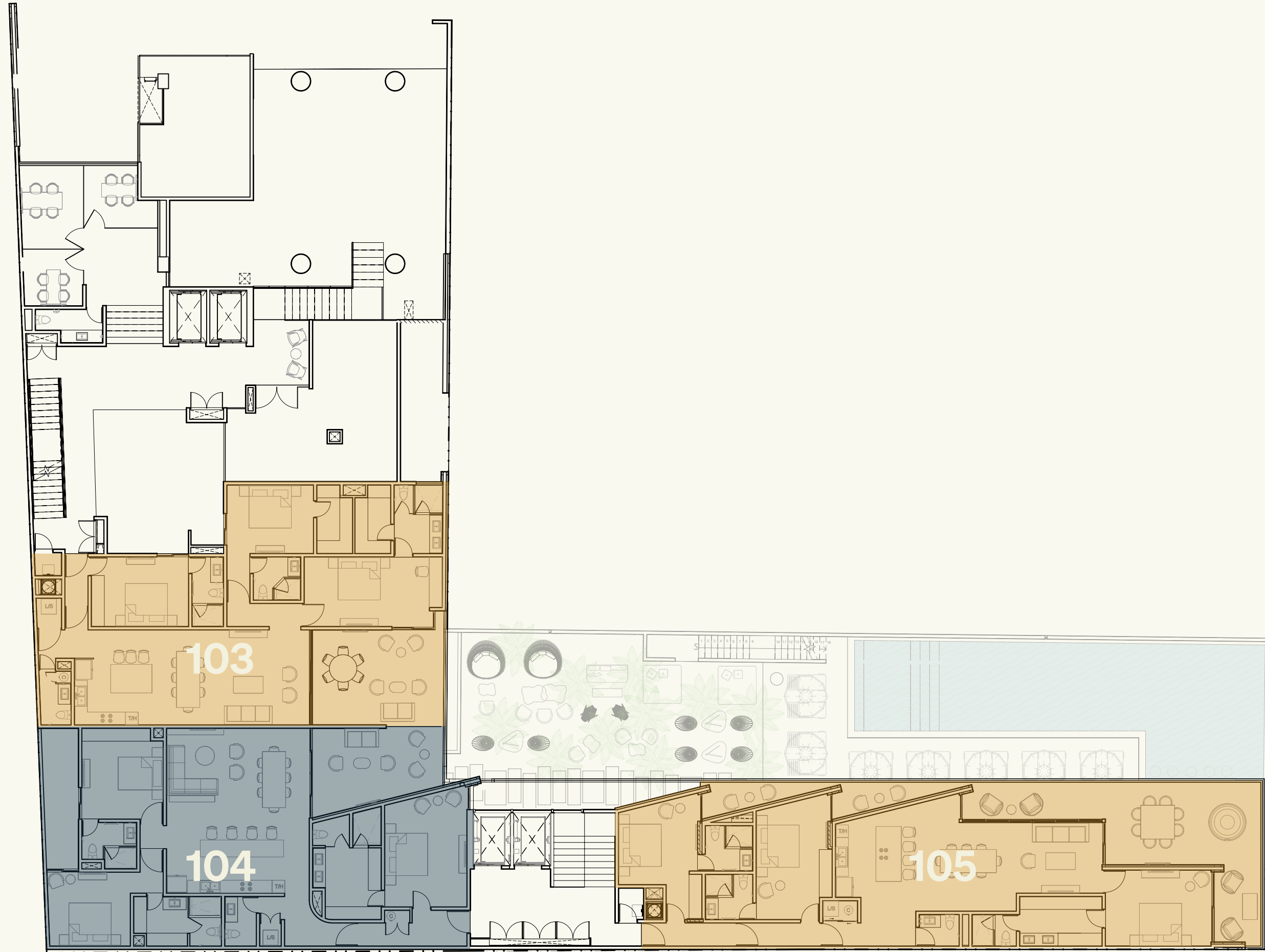
SAINT MARINE®



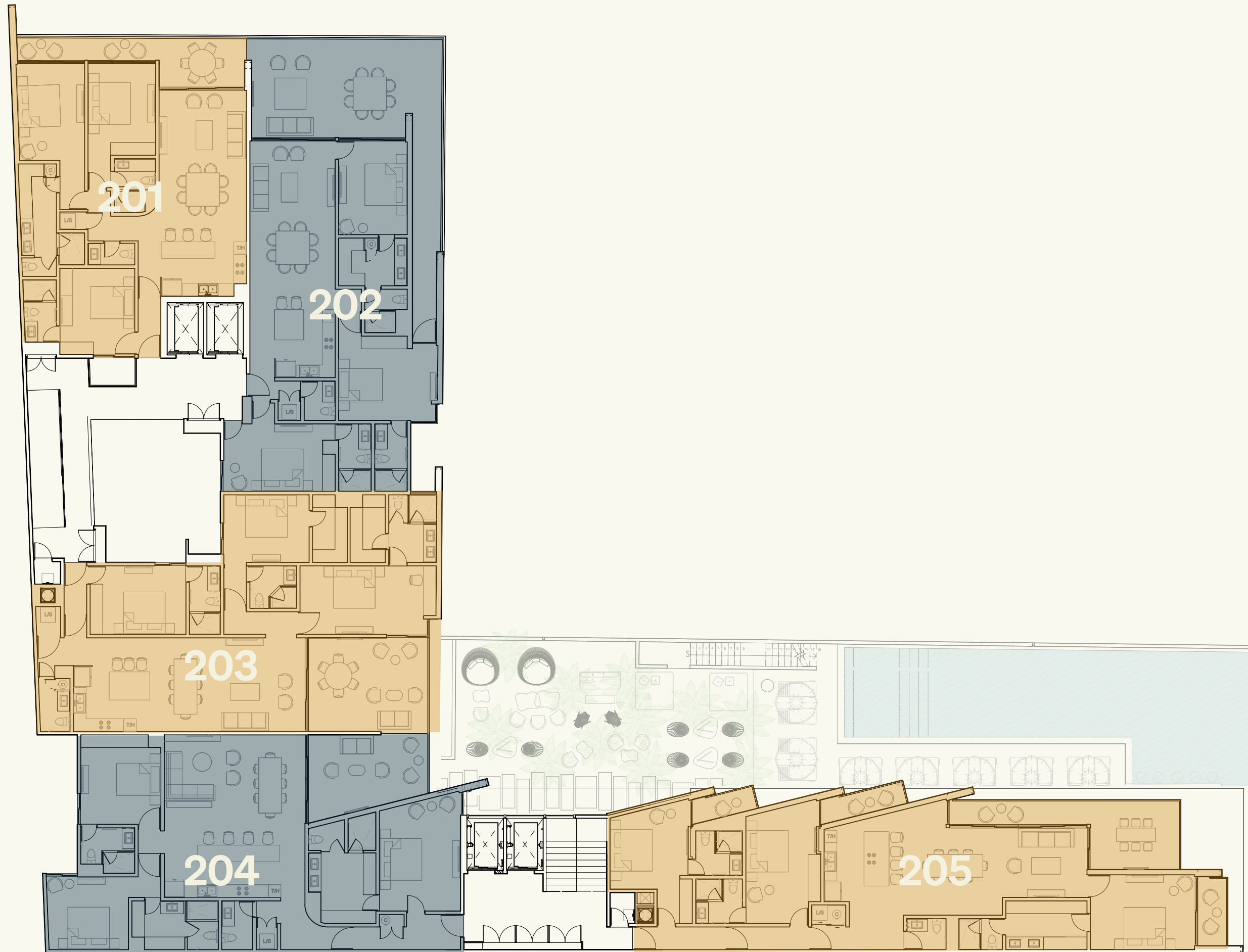
GENERAL
BUILDING PLANS
& LAYOUTS



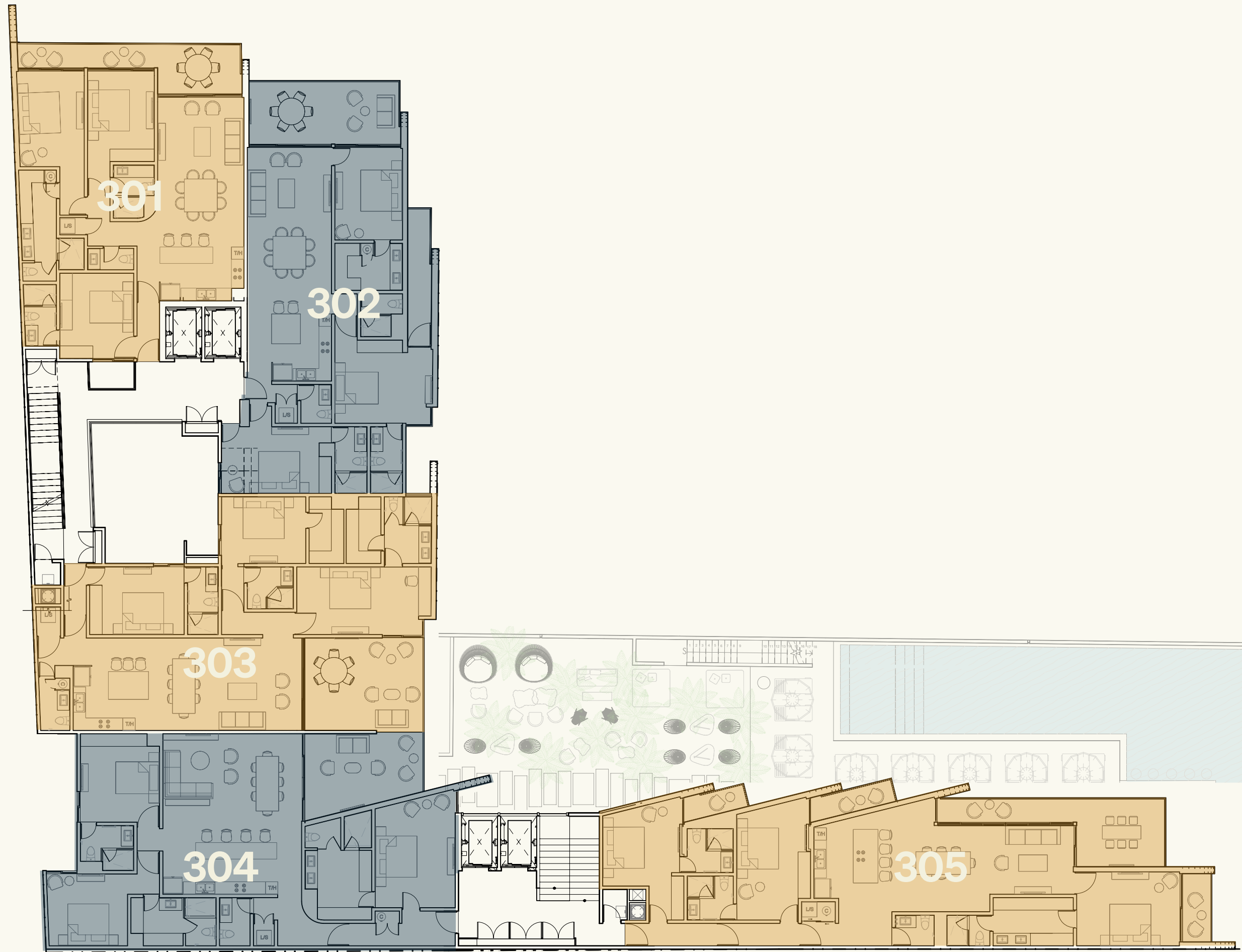
LEVEL 00



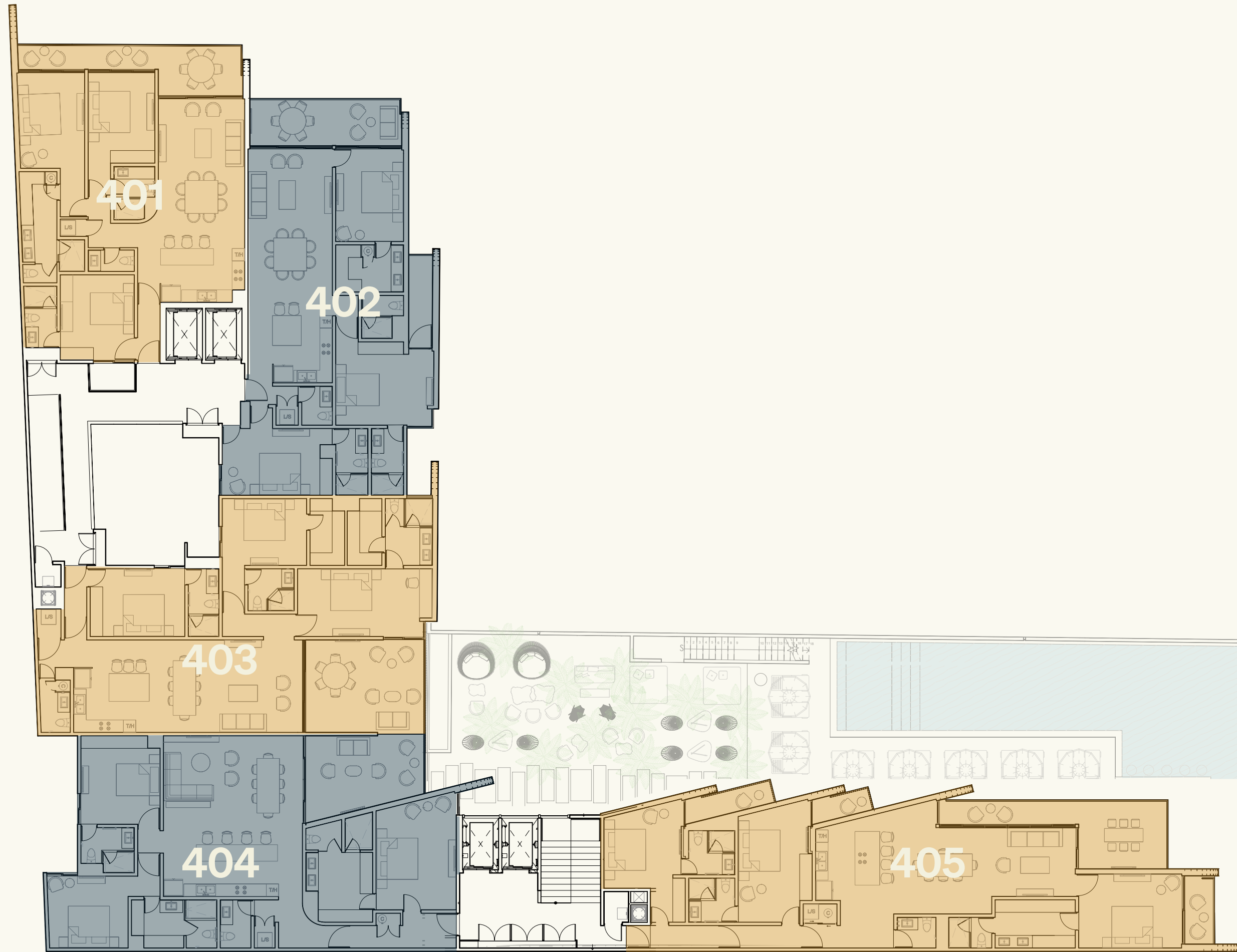
LEVEL 01



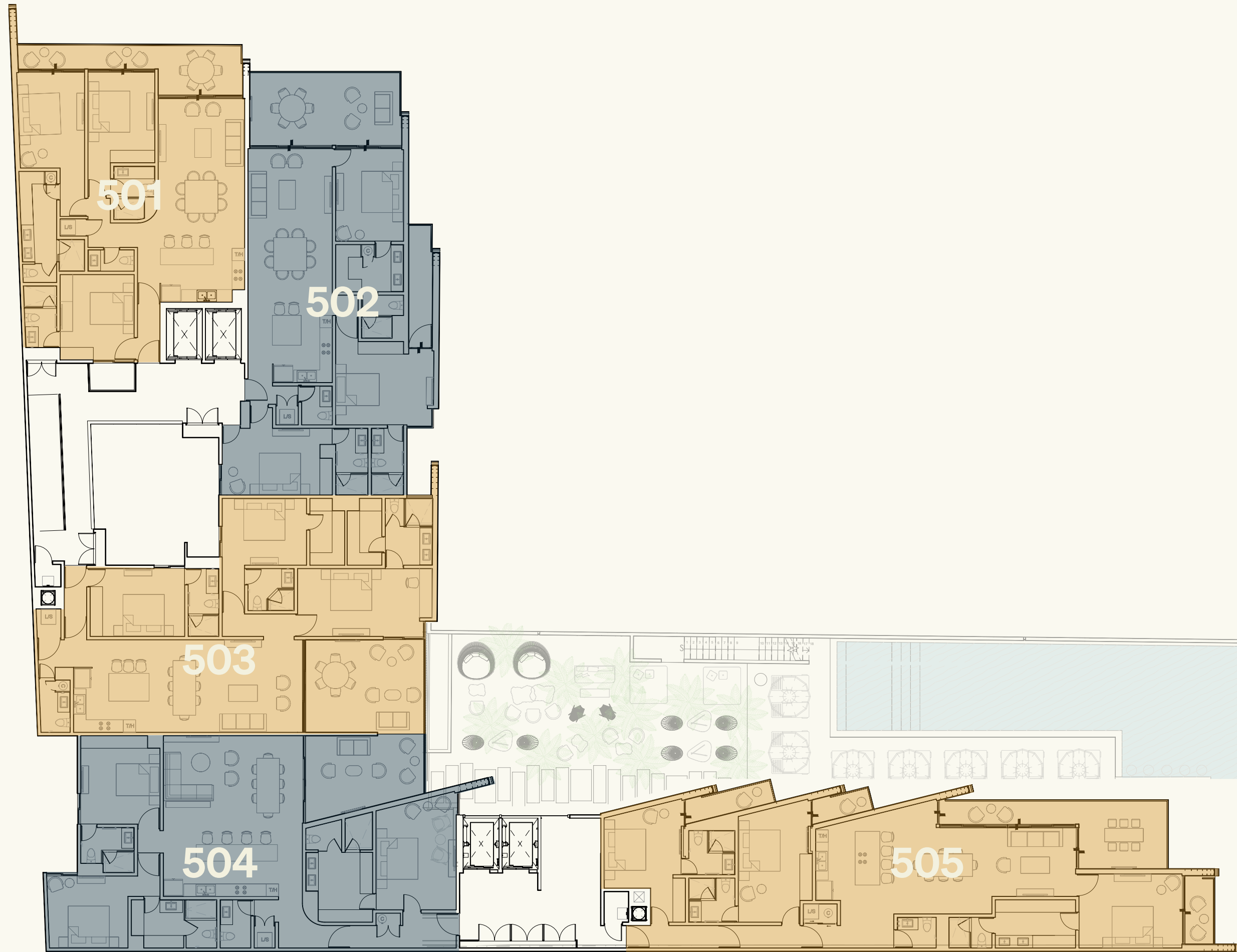
LEVEL 02



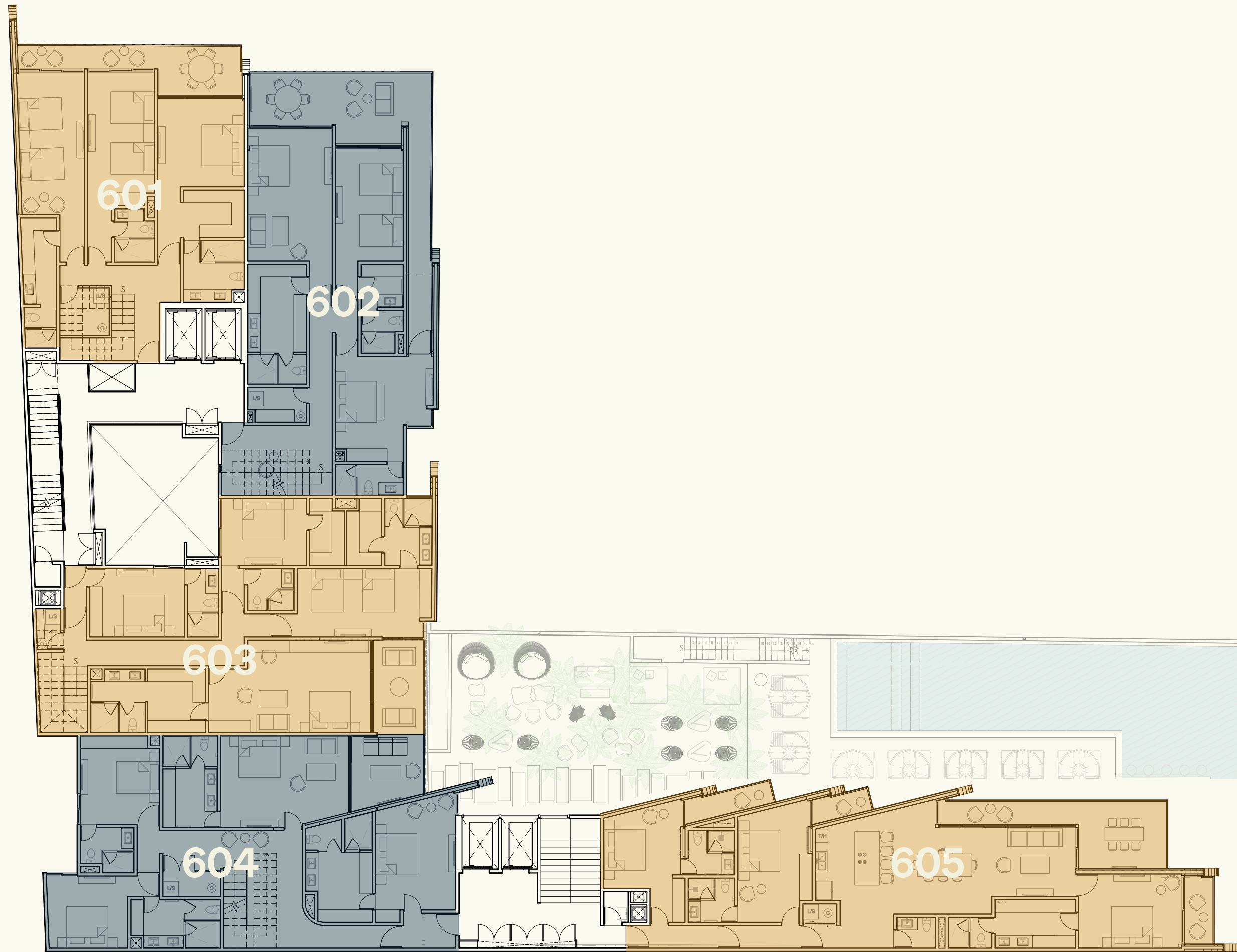
LEVEL 03



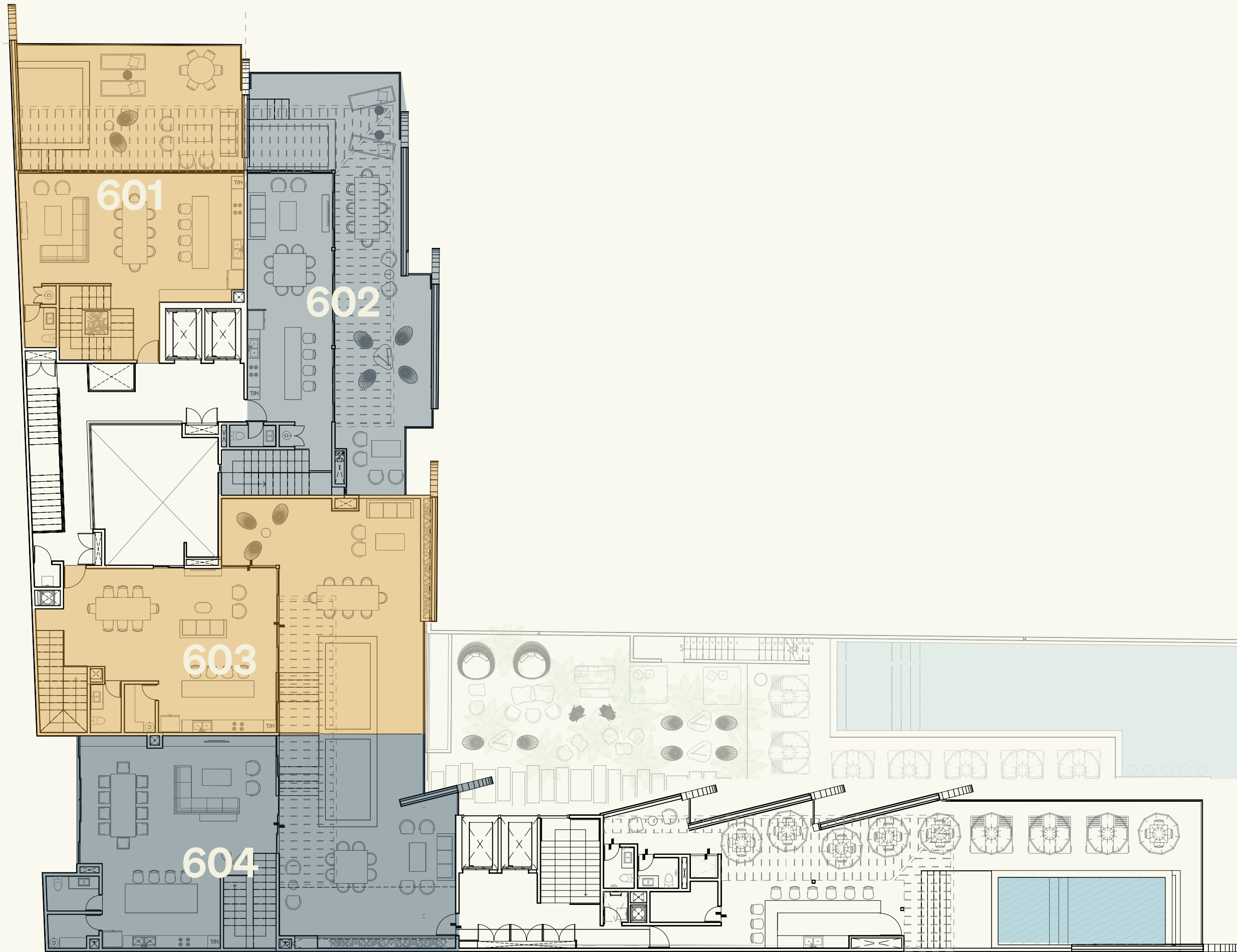
LEVEL 04




LEVEL 05



LEVEL 06



LEVEL 07
ROOF TOP



A JEWEL
IN FRONT OF THE
MEXICAN CARIBBEAN

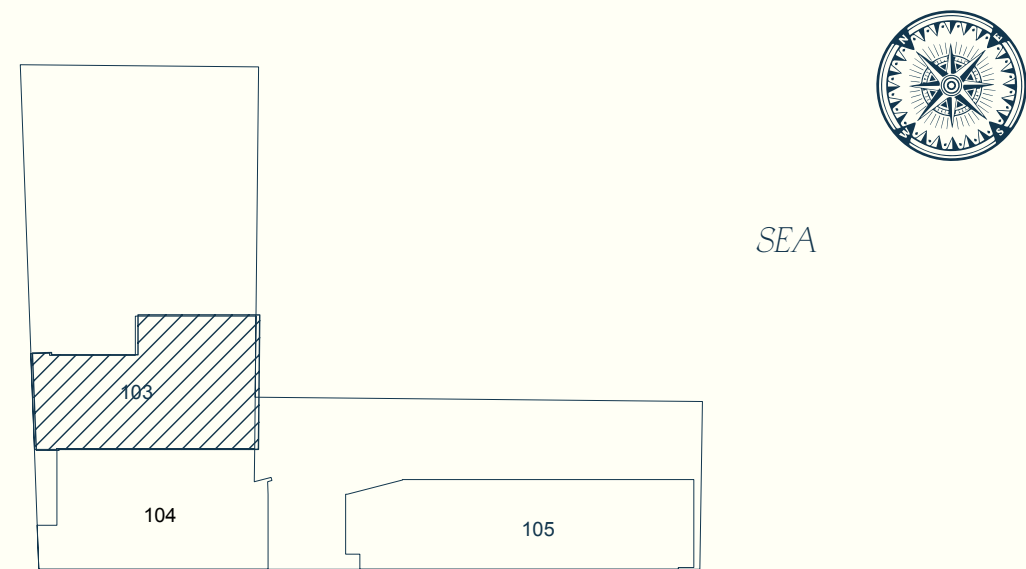
SAINT MARINE®

THE CARIBBEAN KNOCKS ON YOUR DOOR

SAINT MARINE®

INTERIOR	1,685.20	ft ²
COVERED TERRACE	278.78	ft ²
UNCOVERED TERRACE	24.54	ft ²
TOTAL	1,988.52	ft²
BEDROOMS	3	
BATHROOMS	3.5	
LEVEL	1-2-3-4-5	

UNITS: 5

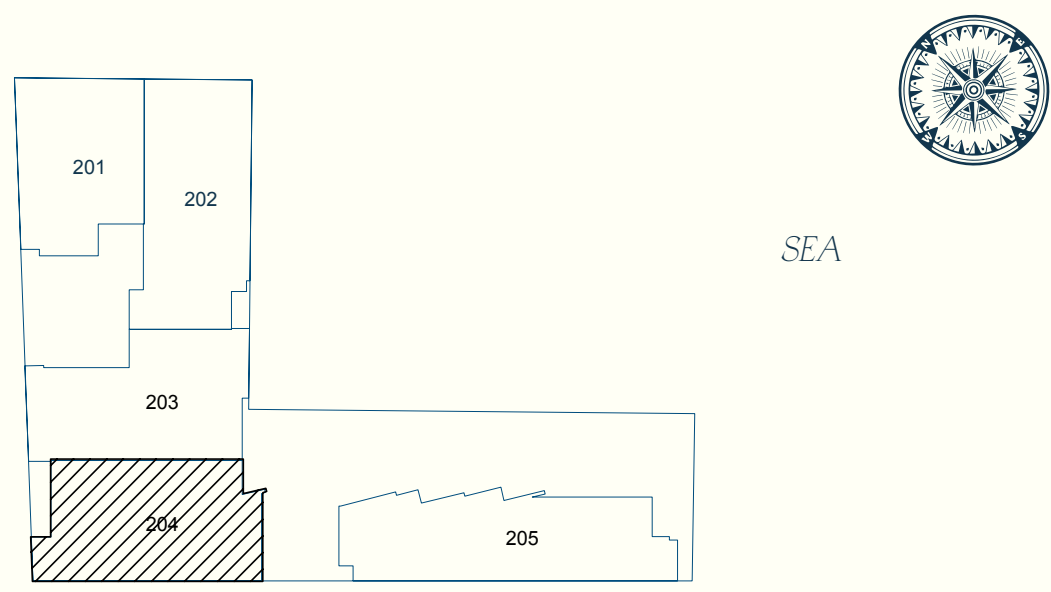


CONDO TYPE A1



INTERIOR	1,797.25	ft ²
COVERED TERRACE	222.38	ft ²
UNCOVERED TERRACE	0.00	ft ²
TOTAL	2,019.63	ft²
BEDROOMS	3	
BATHROOMS	3.5	
LEVEL	1-2-3-4-5	

UNITS: 5

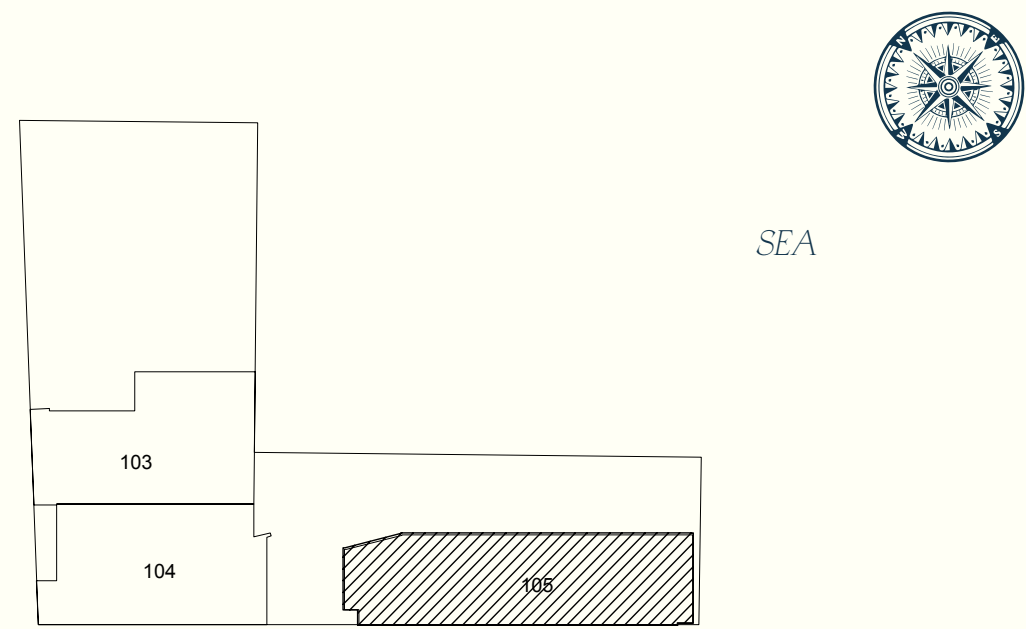


CONDO TYPE A2



INTERIOR	1,739.01	ft ²
COVERED TERRACE	393.42	ft ²
UNCOVERED TERRACE	262.53	ft ²
TOTAL	2,394.96	ft²
BEDROOMS	3	
BATHROOMS	3.5	
LEVEL	1-2-3-4-5	

UNITS: 6

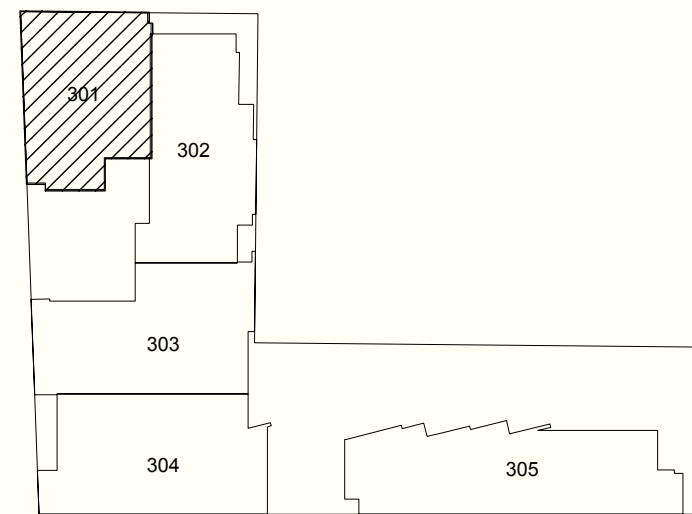


CONDO TYPE A3



INTERIOR	1,455.39	ft ²
COVERED TERRACE	193.10	ft ²
UNCOVERED TERRACE	0.00	ft ²
TOTAL	1,648.49	ft²
BEDROOMS	3	
BATHROOMS	3.5	
LEVEL	2-3-4-5	

UNITS: 4

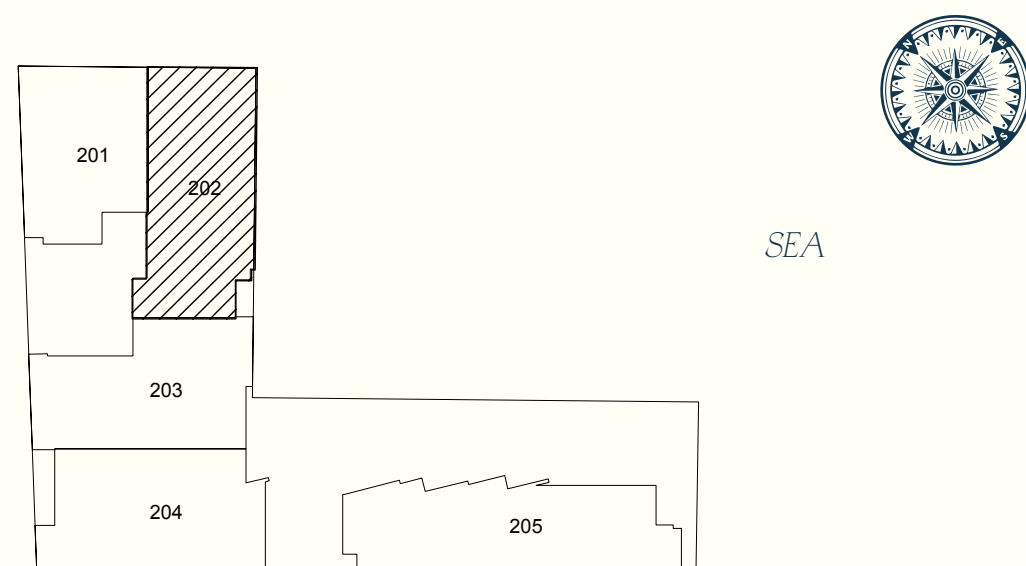


CONDO TYPE A4



INTERIOR	1,483.80	ft ²
COVERED TERRACE	338.09	ft ²
UNCOVERED TERRACE	277.17	ft ²
TOTAL	2,099.06	ft²
BEDROOMS	3	
BATHROOMS	3.5	
LEVEL	2-3-4-5	

UNITS: 4

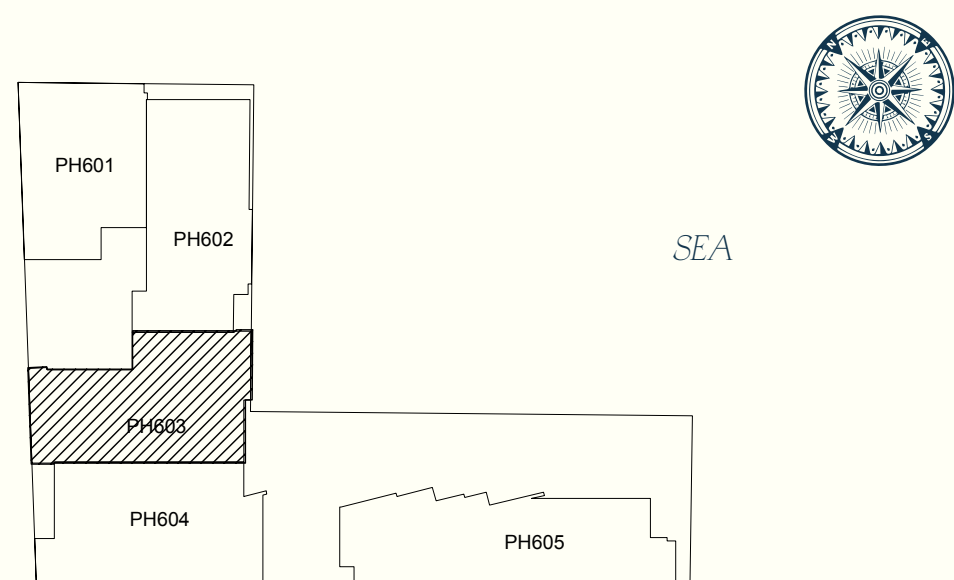


CONDO TYPE A5



INTERIOR	2,821.44	ft ²
COVERED TERRACE	116.03	ft ²
UNCOVERED TERRACE	980.70	ft ²
TOTAL	3,918.17	ft²
BEDROOMS	4	
BATHROOMS	4.5	
LEVEL	6	

UNITS: 1



LOWER FLOOR



HIGHER FLOOR

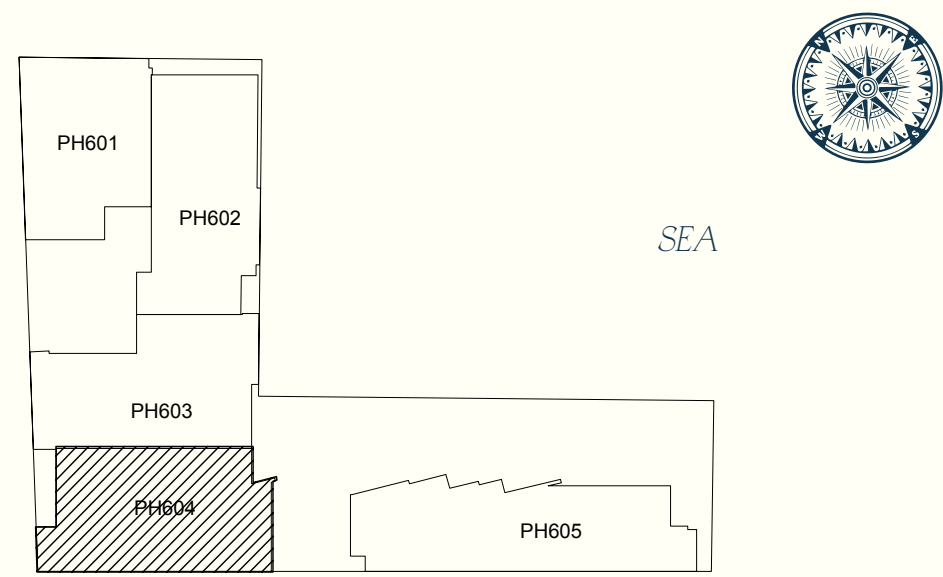


CONDO TYPE PH A1



INTERIOR	3,030.68	ft ²
COVERED TERRACE	126.80	ft ²
UNCOVERED TERRACE	902.45	ft ²
TOTAL	4,059.93	ft²
BEDROOMS	4	
BATHROOMS	4.5	
LEVEL	6	

UNITS: 1



LOWER FLOOR



HIGHER FLOOR

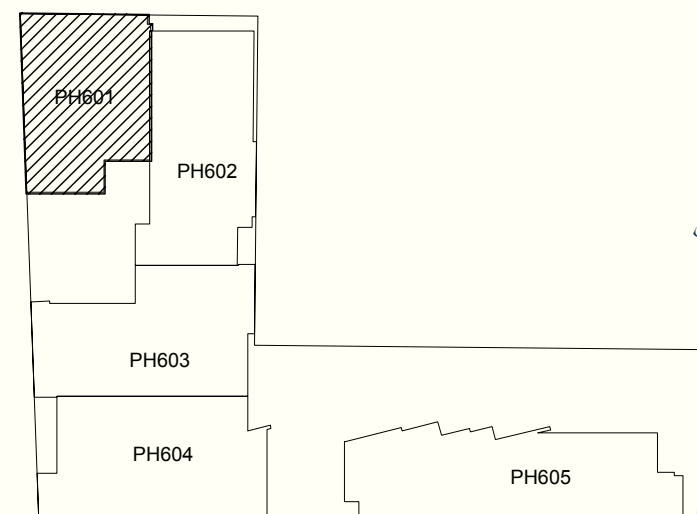


CONDO TYPE PH A2



INTERIOR	2,392.06	ft ²
COVERED TERRACE	193.43	ft ²
UNCOVERED TERRACE	712.14	ft ²
TOTAL	3,297.63	ft²
BEDROOMS	3	
BATHROOMS	3.5	
LEVEL	6	

UNITS: 1



SEA

LOWER FLOOR



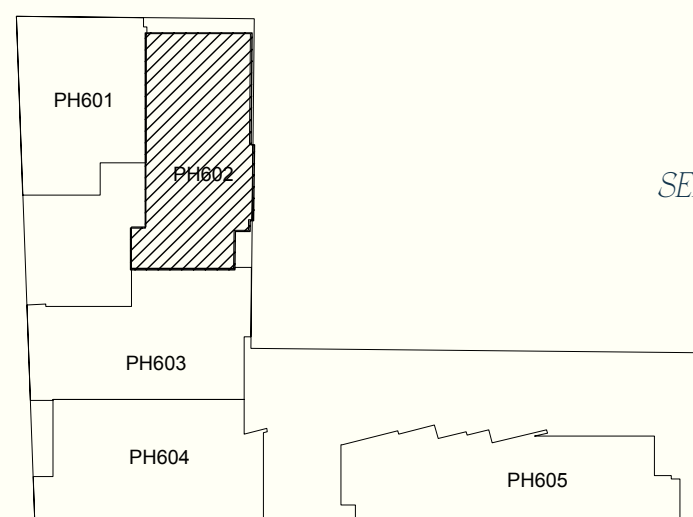
HIGHER FLOOR



CONDO TYPE PH B1

INTERIOR	2,298.21	ft ²
COVERED TERRACE	279.86	ft ²
UNCOVERED TERRACE	1,149.66	ft ²
TOTAL	3,727.73	ft²
BEDROOMS	3	
BATHROOMS	3.5	
LEVEL	6	

UNITS: 1



LOWER FLOOR



HIGHER FLOOR



CONDO TYPE PH B2

SAINT MARINE[®]
SEAFRONT ROW RESIDENCES
BY SIMCA[®]

SENSIBILIDAD
APLICADA

SIMCA

SEIJO

DESIGN BY
futura[®]
フツラ

eterno. §

BRANDING Y DISEÑO

**ALL IMAGES ARE FOR ILLUSTRATIVE PURPOSES,
THE PROJECT MAY UNDERGO CHANGES WITHOUT PRIOR NOTICE.*

