

Catch up on all the fun we have at *Raintree Village*

Our Mission

Purpose, Passion and Joy in life.

Our Vision

Raintree Village is a senior living community dedicated to providing service, stewardship and simplicity through the transitions of life.

Our Value Statement

Raintree Village is guided by and strives to practice these Five Precepts of Culture of Aging:

Dignity: We recognize, understand and honor each individual's perspective, life experiences and ideas.

Quality: We strive to provide the highest level of excellence in service and care.

Choice: As a member of the Raintree Village community, you give us daily opportunities to meet your individual needs.

Respect: We admire and acknowledge the unique qualities of each person.

Community: A community is important to us. We have a genuine desire to join together and build lasting relationships.



Stay connected by visiting our website,
RaintreeVillageLS.com, and social platforms.
Scan the QR codes to get started!



LONG-TERM CARE

Long-term care

in a snapshot

We have a comprehensive approach to short-term rehabilitation and long-term healthcare. After a full assessment by our nursing team, we will customize a care plan to preserve every resident's dignity and respect their wishes while offering medical care. In addition to our community amenities, we offer:

- Resident centered/directed care
- 24 hour skilled nursing care
- Private and enhanced semi-private rooms
- Cable television, telephone, and internet
- Electronic medical charting
- Spa room
- Chaplain services
- Laundry and housekeeping
- Dietary consultation services
- Personalized care plan
- HDTV mounted in each room
- Enclosed courtyard
- Social services and activities
- Rehabilitation services
- Complimentary transportation to medical appointments within a 18-mile radius within normal business hours



Raintree Village offers rehabilitation and skilled care to those who require nursing help. We approach Skilled Nursing and Long-Term Care with the same level of service, compassion and respect for the individual that we deliver in Independent Living and Assisted Living.

SHORT-TERM CARE

Short-term care

in a snapshot

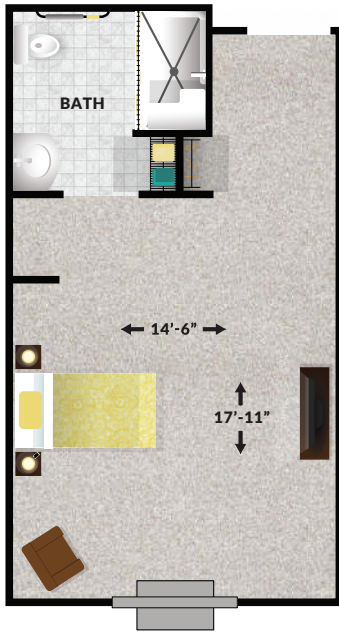
- Everything revolves around the resident and their personal well-being
- Private rooms, and enhanced semi-private rooms
- Calm relaxing environment in which to rehab
- Physical Therapy, Occupational Therapy and Speech Therapy available 7 days a week
- Therapy goals tailored to the specific needs of each individual
- Advanced Registered Nurse Practitioner available weekly
- Spa with whirlpool tub and fireplace
- Medicare approved & certified



Short-Term Rehab

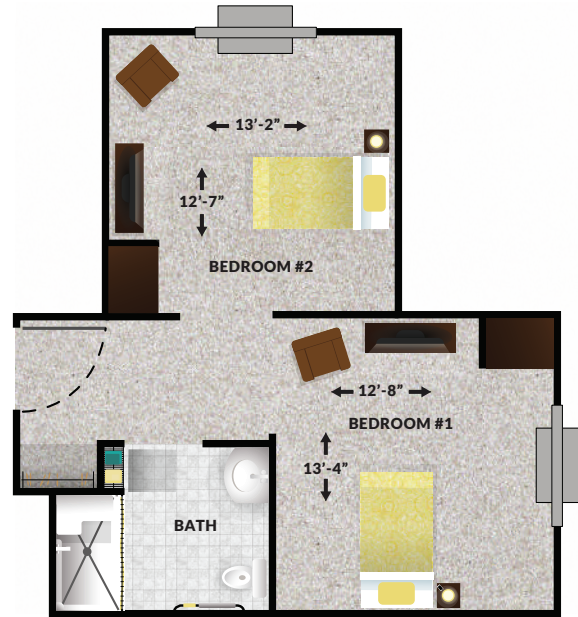
Private- Joshua

1 Bedroom, 1 Bath. 384–399 sq. ft.



Enhanced Semi-Private - Hickory

2 Bedroom, 1 Bath. 525 sq. ft.



Square footage is approximate.

ASSISTED LIVING



Assisted living in a snapshot

Assisted Living apartments offers a higher level of service and support for residents who need help with some activities of daily living. Our all-inclusive pricing in Assisted Living will include:

- Breakfast, lunch, & dinner
- All utilities except telephone
- Weekly housekeeping, laundry, and linen service
- Medication administration
- Emergency call system monitored 24/7
- Transportation available to scheduled activity outings and medical appointments within a 18-mile radius within normal business hours
- Wellness checks and a care plan supervised by a registered nurse
- Accompaniment to meals and activities if needed
- Cable television and internet
- Assistance with bathing and dressing if needed
- Community events and activity program

Extended Care is also available and includes: ADL support — Raintree Village will provide moderate 1 person assistance with dressing, grooming and 100% bathing support. Continence care — Tenant must provide personal continence supplies. Assistance from staff to provide moderate support with transfers and ambulation.



Assisted Living

Evergreen

1 Bedroom, 1 Bath. 553 sq. ft.



Ficus

2 Bedroom, 2 Bath. 808 sq. ft.



Square footage is approximate.

INDEPENDENT LIVING



Independent living in a snapshot

Independent Living Apartments feature expansive, light-filled floor plans with full kitchens, washer/dryer, and modern conveniences. Your Independent Living rent will include:

- Breakfast and lunch provided
- All utilities except telephone
- Cable television and internet
- Weekly light housekeeping
- Emergency pendant system
- Scheduled transportation to activity outings within normal business hours
- Underground garages are available for an additional fee
- Community events and activity program
- Interior and Exterior Maintenance

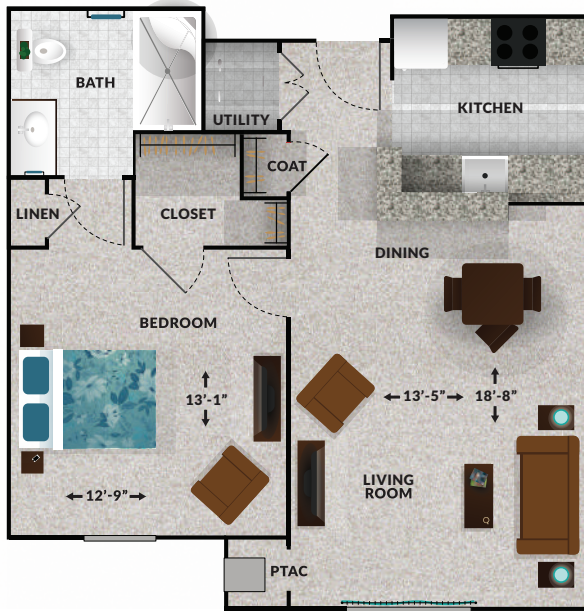
If you don't care to cook, an evening meal is available a la carte. Underground garages are available for Independent Living residents who would like to keep their car out of the elements. There is plenty of outdoor parking available as well.



Independent Living

Cedar C.1

1 Bedroom, 1 Bath. 715 sq. ft.



Cedar C.11

1 Bedroom, 1 Bath w/Deck. 715 sq. ft.



Cottonwood C.2

1 Bedroom, 1.5 Bath. 764 sq. ft.



Cottonwood C.5

1 Bedroom, 1.5 Bath w/Deck 764 sq. ft.



Square footage is approximate.

Independent Living

Birch B.2

1 Bedroom, 1.5 Bath w/Den 858 sq. ft.



Cypress 3 C.3

1 Bedroom, 1.5 Bath w/Deck. 935 sq. ft.



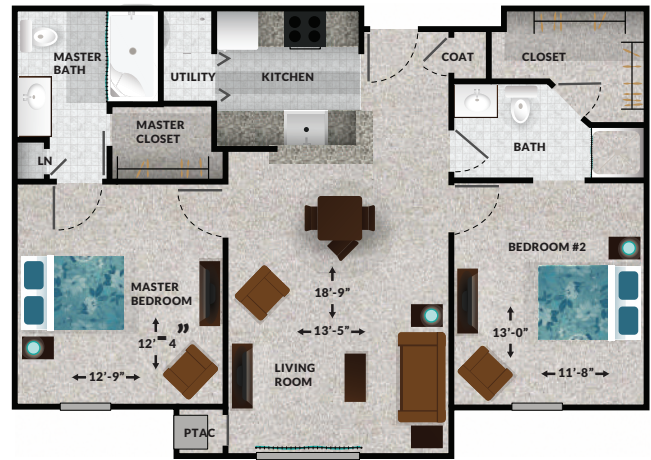
Cypress 6 C.6

1 Bedroom, 1.5 Bath w/Deck. 957 sq. ft.



Alder A.1

2 Bedroom, 2 Bath. 1,012 sq. ft.

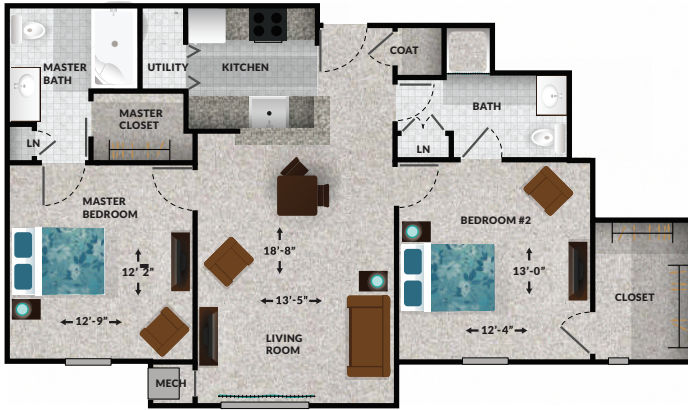


Square footage is approximate.

Independent Living

Alder A.2

2 Bedroom, 2 Bath. 1,049 sq. ft.



Alder A.5

2 Bedroom, 2 Bath. 1,012 sq. ft.



Dogwood D.1

2 Bedroom, 2 Bath w/Deck. 1,229 sq. ft.



Dogwood D.2

2 Bedroom, 2 Bath w/Deck. 1,158 sq. ft.



Square footage is approximate.

Independent Living

Dogwood D.3

2 Bedroom, 2 Bath. 1,111-1,123 sq. ft.



Square footage is approximate.

Our Commitment to

Quality Care

Raintree Village is proud to be recognized as a recipient of the 2025 Bronze – Commitment to Quality Award from the American Health Care Association and National Center for Assisted Living (AHCA/NCAL). This national honor reflects our dedication to providing exceptional care, compassion, and service to those who call our community home.

The Bronze Award is part of a rigorous, three-level program that evaluates long-term care communities against nationally recognized standards of excellence. To achieve this level of recognition, providers must demonstrate a strong foundation for quality care, a culture of continuous improvement, and a commitment to resident well-being.

For residents and families, this recognition is more than just a plaque on the wall — it's reassurance that the care we provide meets high standards and is rooted in trust, safety, and dignity. Our team members go above and beyond every day to create an environment where residents can thrive, families feel supported, and meaningful connections are built.

At Raintree Village, earning this award is both an achievement and a promise. It is a reminder of the tireless efforts of our caregivers and staff, and a reflection of our mission to continually raise the bar in senior living. Most importantly, it reinforces our belief that quality care is not just about meeting needs, but about enriching lives — creating moments filled with purpose, passion, and joy.



2026 PRICING



INDEPENDENT

Raintree Village Independent Living is billed monthly, without a long-term obligation or large entrance or endowment.

APARTMENT	TYPE	SIZE	MONTHLY
Cedar 1 & 4	1 bed, 1 bath	715 sq.ft.	\$3,845
Cedar 2	1 bed, 1 bath w/ deck	715 sq.ft.	\$3,895
Cottonwood	1 bed, 1.5 bath	764 sq.ft.	\$3,945
Cottonwood 2	1 bed, 1.5 bath w/ deck	764 sq.ft.	\$4,005
Birch 2	1 bed, 1.5 bath w/den & deck	858 sq.ft.	\$4,325
Cypress 3	1 bed, 1.5 bath w/ deck	935 sq.ft.	\$4,760
Cypress 6	1 bed, 1.5 bath w/ deck	957 sq.ft.	\$4,760
Alder 1 & 4	2 bed, 2 bath	1,012 sq.ft.	\$5,245
Alder 2	2 bed, 2 bath	1,049 sq.ft.	\$5,355
Alder 5	2 bed, 2 bath w/ deck	1,012 sq.ft.	\$5,355
Dogwood 3	2 bed, 2 bath w/ deck	1,123 sq.ft.	\$5,680
Dogwood 2	2 bed, 2 bath w/ deck	1,158 sq.ft.	\$5,845
Dogwood 1	2 bed, 2 bath w/ deck	1,229 sq.ft.	\$5,950
Second Person Fee			\$700

Community fee: \$2,500 at reservation
 Rental fees include one person per apartment
 Pets Allowed: \$500 non-refundable fee. Restrictions apply.
 Underground Parking Garage: \$100

ASSISTED

APARTMENT	TYPE	SIZE	MONTHLY
Evergreen	1 bed, 1 bath	560 sq.ft.	\$6,230
Ficus	2 bed, 2 bath	806 sq.ft.	\$7,685
Second Person Fee			\$1,200
Extended Care			\$1,500

Community fee: \$2,500 at reservation
 Rental fees include one person per apartment
 Pets Allowed: \$500 non-refundable fee. Restrictions apply.

A copy of the Assisted Living Occupancy Agreement is available upon request. Residents must complete an assessment within 30 days of occupancy, per federal law.

HEALTHCARE

APARTMENT	SIZE	DAILY
Semi-Private	524 sq.ft.	\$375
Private Room	308 sq.ft.	\$405

*Square footage listed is approximate. **Guest room rental rate: \$100, Extra meal cost: \$7**

