

NEWSLETTER

GENESIS TRANSITIONAL HOUSING MINISTRIES, INC

ROOTED IN FAITH, RISING IN HOPE

SPRING 2026



BUILDING MOMENTUM & STRENGTHENING FOUNDATIONS

Genesis Transitional Housing Ministries continues to move forward with a clear focus: stability, structure, and sustainable impact for the women we serve.

Through intentional programming and operational improvements, we are ensuring that residents are not only housed—but healing, growing, and preparing for long-term independence.

Program Highlights

- Continued implementation of structured daily living routines, including shared meals that promote:
 - Life skills development
 - Healthy eating habits
 - Community accountability
- Enhanced case management coordination to track:
 - Housing stability
 - Employment readiness
 - Recovery milestones



OPERATIONAL ADVANCEMENTS

- Streamlined administrative systems to improve efficiency and reduce non-revenue burden
- Expanded grant strategy pipeline to support:
 - Food pantry relaunch
 - Workforce readiness programming
 - Long-term housing expansion

YOUR IMPACT AT WORK

Because of your support:

- Residents continue to receive consistent meals through our soup kitchen
- Women remain in a safe, structured, recovery-centered environment
- Staff are able to provide high-touch, individualized care and support



www.gthminc.org

FAITH, FELLOWSHIP & TRANSFORMATIONAL EXPERIENCES

Partnership Spotlight: Greater Allen Cathedral AME Church

We are honored to continue our partnership with Greater Allen Cathedral AME Church, who sponsored four Genesis women to attend the PrayHer Women's Conference 2026.

Voices from the Experience

The women described the experience as:

- "Spiritually uplifting and empowering"
- "Exactly what I needed in this season"
- "A reminder that my past does not define my future"

They expressed deep appreciation for the opportunity and shared how meaningful it was to be included in such a powerful environment of faith and encouragement.



www.gthminc.org



Why This Matters

Access to experiences like PrayHer:

- Reinforces identity, dignity, and self-worth
- Strengthens faith-based recovery pathways
- Connects residents to positive, empowering communities

This partnership exemplifies how community collaboration creates transformational impact.

HEALTH, HEALING & WELLNESS PARTNERSHIP:

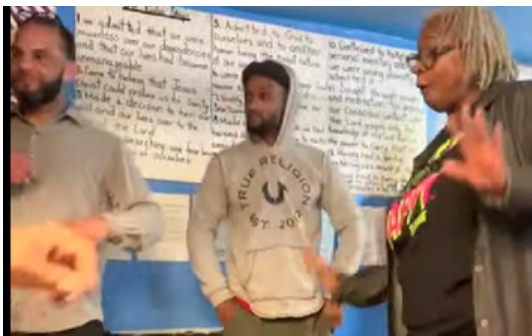


PARTNER: MOVING BETTER

Our partnership with Moving Better continues to bring intentional wellness programming that supports both the physical and emotional restoration of Genesis residents.

Program Components

- Zumba Gold Fitness Dance
 - Low-impact, accessible movement for all fitness levels
 - Builds strength, confidence, and consistency
- Mind-Body Wellness
 - Encourages stress reduction
 - Promotes emotional balance and mental clarity



Rooted & Rising Reflection Series



Moving Better has deepened its impact by introducing “Rooted & Rising,” a meaningful reflection series that integrates wellness with storytelling, lived experience, and personal growth. This series creates space for residents to:

- Reflect on their journeys
- Connect healing with purpose

Learn from individuals who have overcome adversity

Featured Voice: Dorothy Brasier (Age 82, Approaching 83)

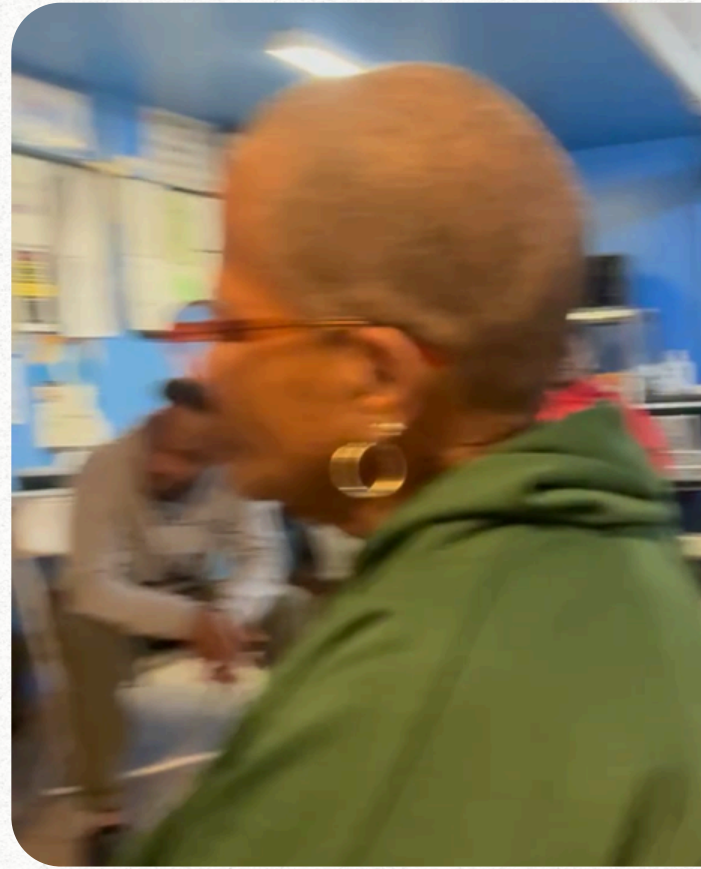
One of the most impactful moments came from Ms. Dorothy Brasier, who shared her testimony of resilience, discipline, and long-term recovery.

In her own words:

“Hi, my name is Dorothy Brasier. I’m 82 years old, looking for 83—and I know I’m going to make it. I have 37 years of sobriety, one day at a time.

How do I keep it? I share myself with other people. I share my story, hoping I reach somebody—just one somebody—and I know I’ve done my job.

I love what I do, and I’m going to see 83. I don’t stress myself, and I don’t let nobody else stress me either. I keep it moving—as my girlfriend Lois says, ‘Use it or lose it.’ Thank you.”



WHY THIS MATTERS

Dorothy's testimony provided:



A living example of sustained recovery (37 years sober)



Intergenerational mentorship and lived wisdom



A model of resilience, discipline, and mindset

Her message reinforced a powerful truth:

Transformation is possible—and sustainable—with consistency, community, and purpose.



Program Impact

Through the combined efforts of Moving Better and the Rooted & Rising series, residents are:

Strengthening physical health and mobility

Developing emotional resilience and coping strategies

Building confidence through shared experiences

Seeing real-life examples of long-term success

This is whole-person healing in action—made possible because of you.

Expanding Access & Strengthening Community Impact Food Services & Community Demand



The demand for Genesis services continues to grow. While our soup kitchen remains active for residents, we are actively working to:

- Re-establish funding for our food pantry
- Expand services to meet community-wide needs

The message from the community is clear:

“We need Genesis back.”

With your continued support, we are preparing to respond with expanded services and greater reach.

Administrative & Funding Progress

- Advancing multiple funding opportunities to expand:
 - Food access programs
 - Housing services
 - Workforce development initiatives
- Strengthening compliance systems to align with:
 - State-level funding expectations
 - Data-driven outcome reporting





SPECIAL ANNOUNCEMENTS

STAY CONNECTED: SOCIAL MEDIA UPDATE

Our social media platforms are currently temporarily unavailable due to a security issue. We are actively working toward resolution.

In the meantime:

- Please check your email inbox for updates
- Be sure to check your spam/junk folder
- We will continue to communicate directly via email

Support the Mission: Genesis Merchandise Store



You can support Genesis while spreading awareness by visiting our Genesis Merchandise Store.

Your purchases directly support:

Resident services

Program expansion

Daily operational needs

Every purchase is a direct investment in transformation.

YOUR IMPACT IN ACTION

Because of your generosity:

Women remain safely housed in a structured recovery environment

Residents receive consistent meals and wellness programming

Participants access life-changing spiritual and personal development experiences

Strategic partnerships expand opportunities for healing and growth

Genesis continues moving toward restoring full community food services



A MESSAGE FROM OUR EXECUTIVE DIRECTOR

“WHAT’S NEXT?”

Dear Supporters,

On behalf of Genesis Transitional Housing Ministries, I extend my deepest gratitude for your continued support.

Because of you, we are able to do more than provide housing—we are restoring lives, rebuilding hope, and creating pathways to independence.

This season has demonstrated that true impact is measured not only in services delivered, but in lives transformed, faith renewed, and dignity restored.

Thank you for standing with us, believing in our mission, and investing in the men and women we serve. With appreciation and purpose,

Revs. Andre & Helen Broady

Executive Director
Genesis Transitional Housing
Ministries, Inc.

As we move forward, our priorities include:

- Re-launching the Genesis Food Pantry
- Expanding housing capacity
- Increasing employment and workforce programming
- Strengthening data tracking and reporting for funders



 @gthminc
 @gthminc

● 718-834-7320 ●

www.gthminc.org

Genesis Transitional Housing Ministries