

When to hire an Aging Life Care™ Professional



If you like to plan ahead, you understand the value of having the right resources in place when life inevitably brings changes. Consider choosing to make professional care management part of your proactive life plan in the same way you chose to rely on trusted legal and financial counselors.

An Aging Life Care™ Professional is a

healthcare professional with training in aging and disability care. They assess needs and coordinate services. They advocate alongside family and other professionals. They create short- and long-term plans that are tailored to you and your goals. Their focus is to protect safety, support independence, and improve quality of life while reducing stress. Many people assume care managers are needed only in a crisis. But the most effective partnerships often begin earlier, when you have time to confer at length about history and priorities.

A recent study from Virginia Tech showed that clients who had identified a care partner early experienced strong satisfaction and measurable benefits. Families reported reduced stress, clearer communication, and stronger decision-making during transitions and emergencies.

There are two common ways people begin this relationship:

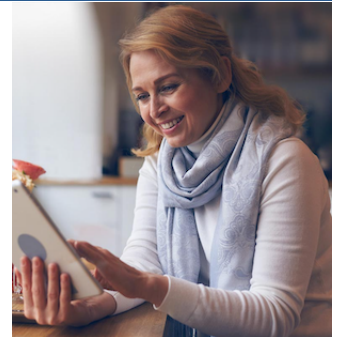
The first is early and proactive. You notice small changes in yourself. Medical visits feel more complex or overwhelming. A fall raises concern. You want experienced guidance for lifestyle or long-term care planning. An Aging Life Care Professional can help you understand options and align planning with other professionals, e.g., an estate attorney or wealth advisor. You receive a roadmap and a trusted advisor who already knows your wishes if needs increase or an emergency occurs.

The second is during a crisis. You have an unexpected hospitalization that leaves you vulnerable. Or a sudden cognitive shift. Perhaps your living situation needs to change quickly. Aging Life Care Professionals are ready to respond to a variety of crises. However, this means you may need to make big decisions quickly, even while their assessments are still underway.

Care management is usually private pay and billed hourly. You can increase or decrease support as needs change. Medicare does not cover this service. If you have long-term care insurance, review your policy to see if it may reimburse part of the cost.

You may not need active coordination today. But adding this trusted professional to your circle ahead of time can ensure that future decisions are made calmly and clearly. Their experience and compassion can ease the path when needs shift.

**Would you like a partner in planning?
Give us a call at 913-213-8799.**



AgeWise Advocacy &
Consulting

913-213-8799

We support individuals and families in Kansas City as they plan for aging.

Give us a call to find out how we can support you.