

Interior Design Project Proposal

MARINA SHORES APARTMENT

Clients: Omar and Lina
Interior Designer: Manar Felemban





Table of Contents

CLIENT BRIEF

PROJECT OVERVIEW

DESIGN CONCEPT

MOODBOARDS

SPACE PLANNING

3D RENDERS

Client Brief

Client Name:

Mr. Omar & Mrs. Lina

Location:

Marina Shores, Dubai, UAE

Age:

Early 30s

Apartment Size:

90 m²



Client Brief

Design Preference:

- Contemporary design with a refined, luxurious character.
- Carefully curated statement pieces and premium finishes.
- Functional layouts that maximize space and visual clarity.
- Abundant natural light to enhance openness and comfort.
- A calm, sophisticated atmosphere tailored to everyday living.

Lifestyle and Design Goals:

- A flexible home environment that supports an active, urban lifestyle.
- Spaces designed for both relaxation and social gatherings.
- Emphasis on privacy, comfort, and spatial flow.
- Design strategies that frame the Dubai Marina view.
- Use of high-quality materials and bespoke lighting to elevate the space.



Client Brief

Specific Requirements:

Individual Requirements:

For Lina:

- Dedicated storage and display space for her skincare and makeup collection, with integrated lighting for ease of use and elegant presentation.

For Omar:

- A cozy, private corner designed for relaxation, unwinding, and personal time.

Shared Preferences:

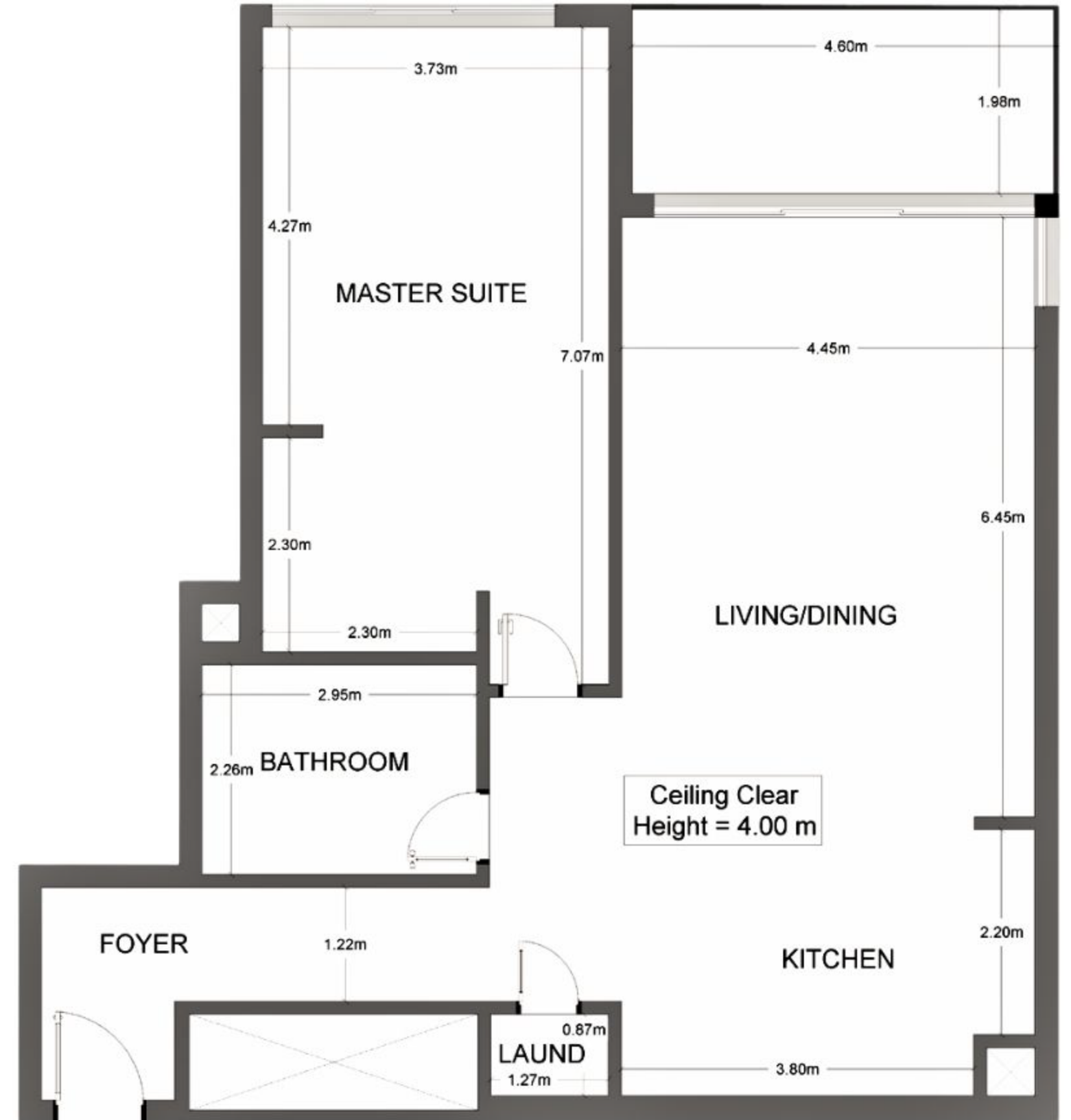
- Curated artwork to add personality and character to the apartment.



Existing Plan

Apartment Areas:

- Foyer
- Living Area
- Dining Area
- Kitchen
- Master suite
- Bathroom
- Laundry
- Balcony



DESIGN CONCEPT

Creative Direction

The design concept creates a calm and refined urban retreat within a high-rise waterfront setting.

Spatial clarity and fluid movement define the layout, balancing public and private zones while maintaining a strong visual connection to Dubai Marina.

The design prioritizes openness, privacy, and natural light to support both everyday living and social interaction.



Warm CONTEMPORARY DESIGN STYLE

The project adopts a warm contemporary interior style defined by clean lines, open layouts, and balanced proportions.

Natural materials such as travertine stone and fine wood finishes are paired with a neutral color palette to introduce warmth and material depth.

Bespoke lighting and carefully curated elements enhance key spaces while maintaining clarity, cohesion, and an elegant overall aesthetic.



MOOD *Board*

Foyer

This moodboard reflects a refined foyer defined by clean lines, warm natural materials, and subtle metal detailing.

A balance of travertine, wood, and brushed brass creates a calm, organized entry sequence that transitions seamlessly into the living spaces beyond.



MOOD *Board*

Kitchen

This kitchen moodboard reflects a contemporary and refined space defined by natural textures, warm stone surfaces, and clean, minimal lines. The combination of travertine, wood cabinetry, and soft neutral tones creates a calm and sophisticated atmosphere, balancing functionality with understated elegance.



MOOD Board

Living room

This moodboard represents a refined living space defined by soft forms, warm natural materials, and a neutral palette.

Layered textures, curved furniture, and subtle metal accents create a calm, welcoming atmosphere that balances contemporary elegance with everyday comfort.



MOOD *Board*

Living room

This moodboard expresses a refined living space centered around a warm, architectural TV wall composition.

Natural stone, rich walnut tones, and subtle brass accents create a calm, contemporary atmosphere with a sense of understated luxury.



MOOD *Board*

Bedroom

The bedroom composition is defined by linear wall cladding that adds rhythm and subtle texture behind the bed.

A curated wall art piece introduces a soft focal point, balanced by warm neutral tones and upholstered furniture.

Pendant lights frame the bed with a gentle, ambient glow, while a textured area rug grounds the space and enhances comfort.



MOOD

Board

Bedroom

This bedroom composition is defined by a clean-lined TV wall integrated with concealed storage, creating a seamless and uncluttered backdrop.

Warm wood finishes and open shelving introduce depth and visual rhythm, allowing curated objects to add character.

A floating desk element and integrated lighting enhance functionality while maintaining a refined, contemporary atmosphere.



MOOD

Board

Dressing Area

The dressing area is defined by fluted glass cabinetry and clean-lined storage, creating a light and refined composition.

A floating vanity table paired with a ceiling-hung mirror enhances functionality while maintaining visual openness and airiness within the bedroom.

Integrated lighting and warm neutral finishes soften the space, reinforcing a calm and elegant atmosphere.



MOOD

Board

Bathroom

The bathroom is defined by a refined combination of travertine surfaces and dark wood accents, creating a warm and luxurious contrast.

Clean-lined vanity elements and a travertine sink establish a minimal, sculptural composition. Integrated and concealed lighting enhances texture and depth, contributing to a calm, spa-like atmosphere.



MOOD *Board*

Laundry Closet

This moodboard showcases a hidden laundry door, maintaining the aesthetic harmony of the space without disruption. When opened, it reveals a neatly organized laundry area with shelves for essentials and a washer-dryer combo, maximizing vertical space for a clean, minimalist look.



MOOD

Board

Balcony

The balcony is defined by light wood decking, minimal white seating, and lush tropical planting, creating a relaxed outdoor setting.

A pergola structure and woven pendant lighting introduce texture while providing soft shade and ambient illumination.

Clean lines and open views allow the space to feel airy and connected to the surrounding marina landscape.

COLOR

Palette

Primary



Wall
Paint



White
Bouclé
Fabric



Travertine
Stone

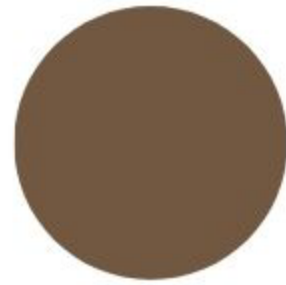
Secondary



Grey
Porcelain
Flooring

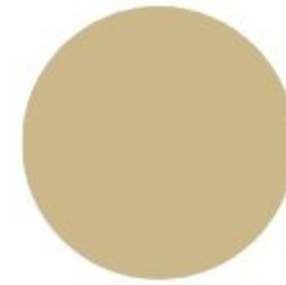


Matte Ash
Finish

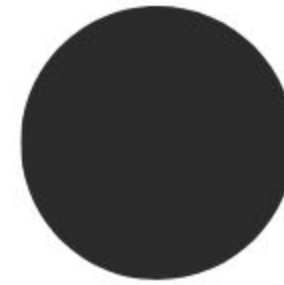


Walnut
Wood

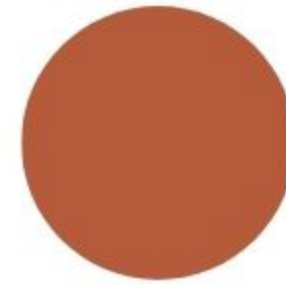
Accents



Brushed
Brass



Black Metal
Accent



Terracotta
Feature
Tone

Material

Board

WOOD

Walnut wood veneer is used for feature walls, cabinetry, and furniture, adding warmth, richness, and a refined natural character to the interior.

FABRIC

White bouclé upholstery and soft neutral textiles introduce texture and comfort, creating a warm and inviting atmosphere while maintaining a contemporary aesthetic.

STONE

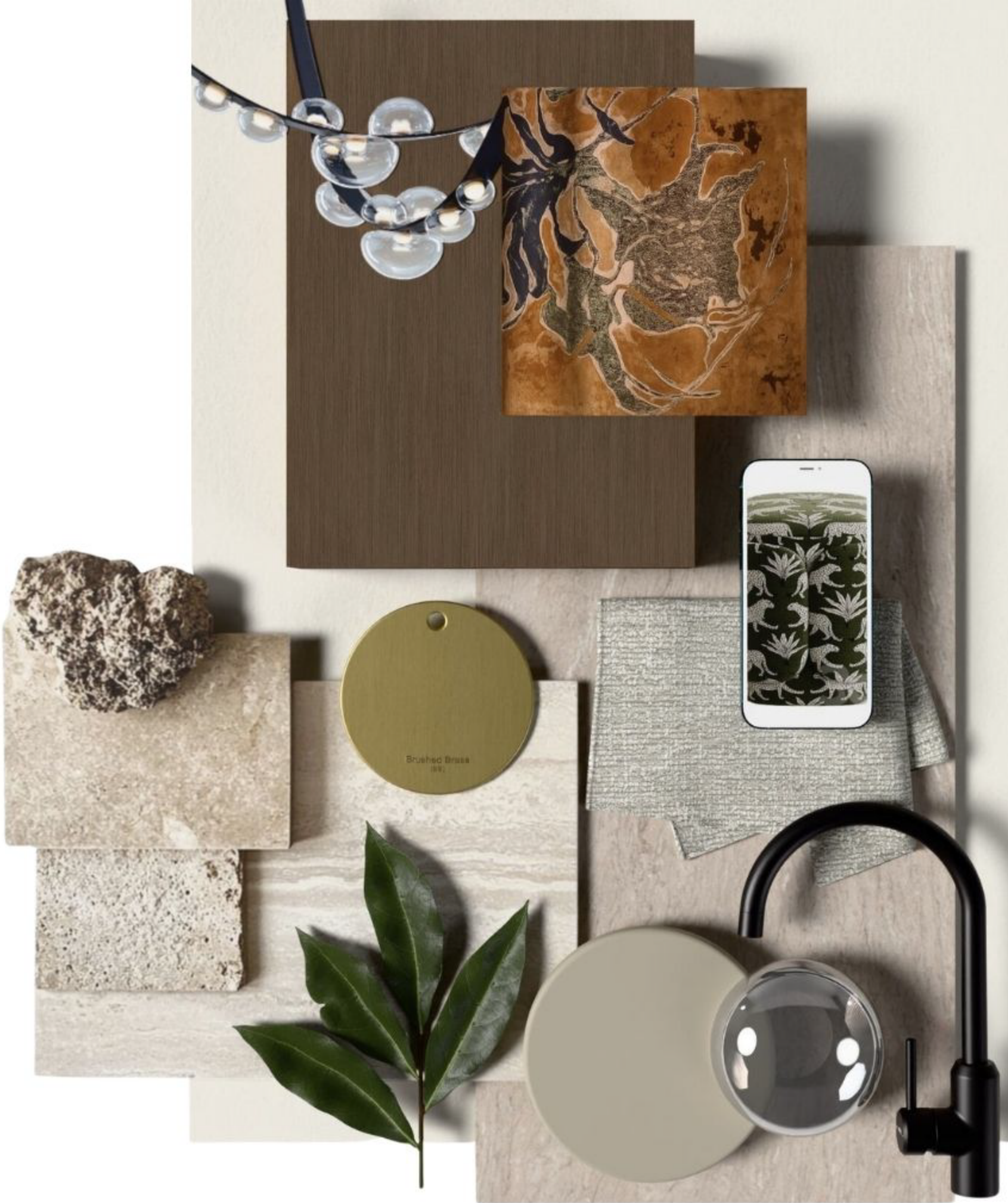
Travertine stone and marble-look porcelain tiles are applied on key surfaces to add natural texture, depth, and a sense of understated luxury.

GLASS

Smoked and clear glass elements are incorporated in lighting and display features, enhancing visual lightness while adding subtle contrast and elegance.

Living & Kitchen

Material Board



Material Board

Primary

- 01 · Soft neutral wall paint
- 02 · Marble-look porcelain tile
- 03 · Travertine stone
- 04 · Walnut wood veneer

Secondary

- 05 · White Bouclé fabric upholstery
- 06 · Matte Ash grey lacquered finish

Accents

- 07 · Brushed brass metal
- 08 · Smoked glass
- 09 · Matte black metal
- 10 · Decorative wallpaper



Bathroom

Material Board



Material Board

Primary

- 01 · Matte Ash grey WPC wall panels
- 02 · Concrete-look porcelain tiles

Secondary

- 03 · Travertine wall cladding
- 04 · Walnut wood WPC wall panels

Accents

- 05 · Travertine stone (sealed)
- 06 · Dark grey marble tiles
- 07 · Printed Large-Format Porcelain Slab
- 08 · Matte black metal



Bedroom

Material Board



Material Board

Primary

- 01 · Soft neutral wall paint
- 02 · Engineered wood flooring (chevron pattern)
- 03 · Matte Ash grey lacquered MDF
- 04 · Walnut wood veneer

Secondary

- 05 · Travertine stone
- 06 · White Bouclé fabric upholstery

Accents

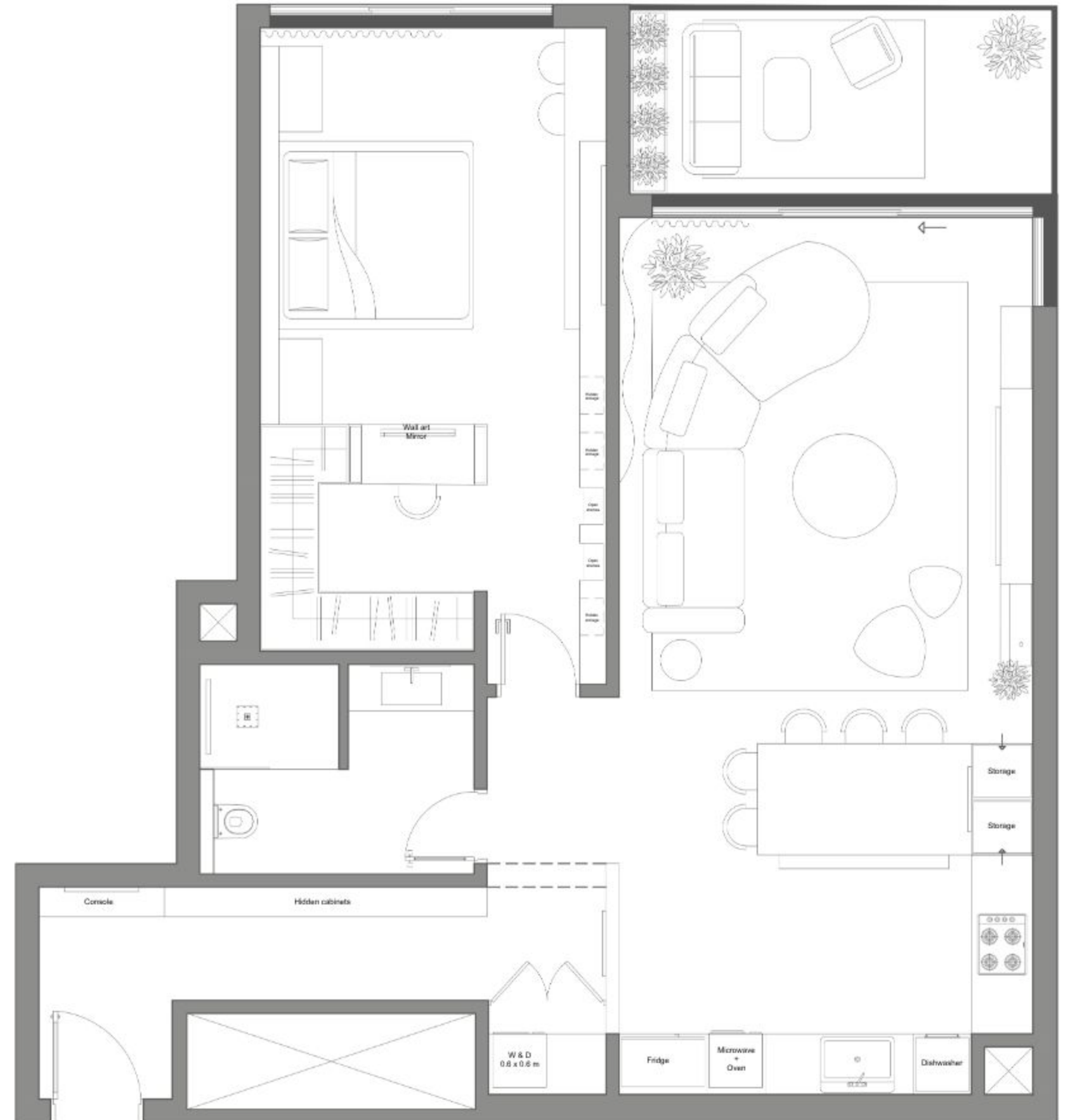
- 07 · Brushed brass metal



Space *Planning*

The space planning maximizes Dubai Marina views and natural light through open, flowing living, dining, and kitchen areas. Curved furniture adds softness, while dedicated zones—such as Lina’s skincare storage and Omar’s relaxation corner—ensure privacy and comfort.

The bedroom offers a serene retreat with seamless storage, while the bathroom features spa-like finishes in travertine. The foyer introduces the home with a minimalist layout, integrated storage, and statement artwork.



3D RENDERS

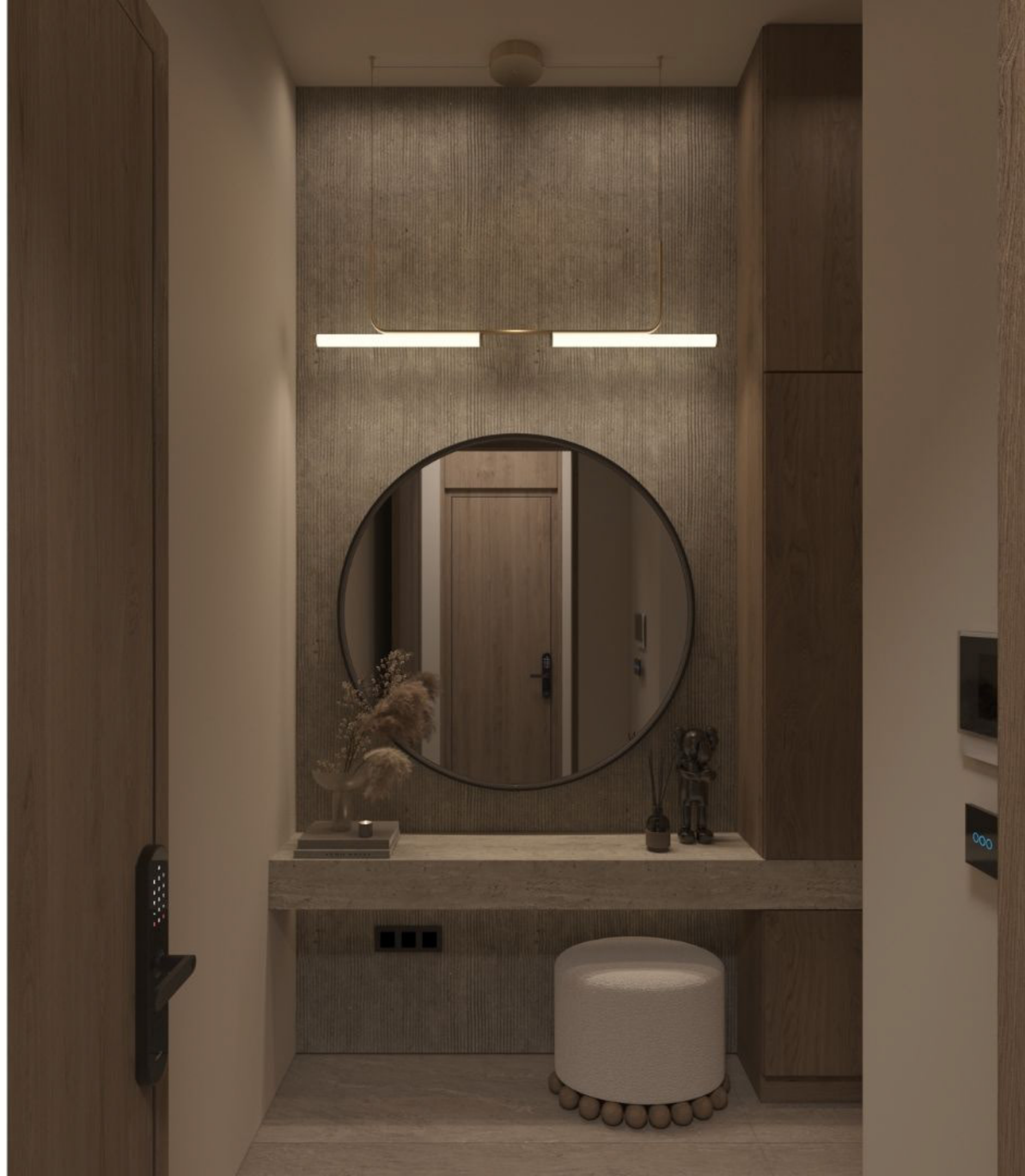
This section presents the 3D visualizations of the proposed design, translating the concept and material strategy into realistic spatial representations that illustrate the atmosphere, proportions, and overall design intent.



FOYER

View 01- Entrance

Detail 01- Materials close up





FOYER

View 02- Foyer Corridor

Detail 02- Wall art



FOYER

View 03- Hidden Laundry Closet





KITCHEN

View 04- Kitchen Front Perspective
Detail 03- Wall Art





KITCHEN

View 05- Kitchen Side Perspective
Detail 04- Sink Counter



LIVING

View 06- Living Overview



LIVING

View 07- Sofa Feature Wall





LIVING

View 08- Media wall

Detail 05- Media Wall Sculptures



DETAILES

Detail 06- Side Table Lamp

Detail 07- Accent Soft Furniture





BEDROOM

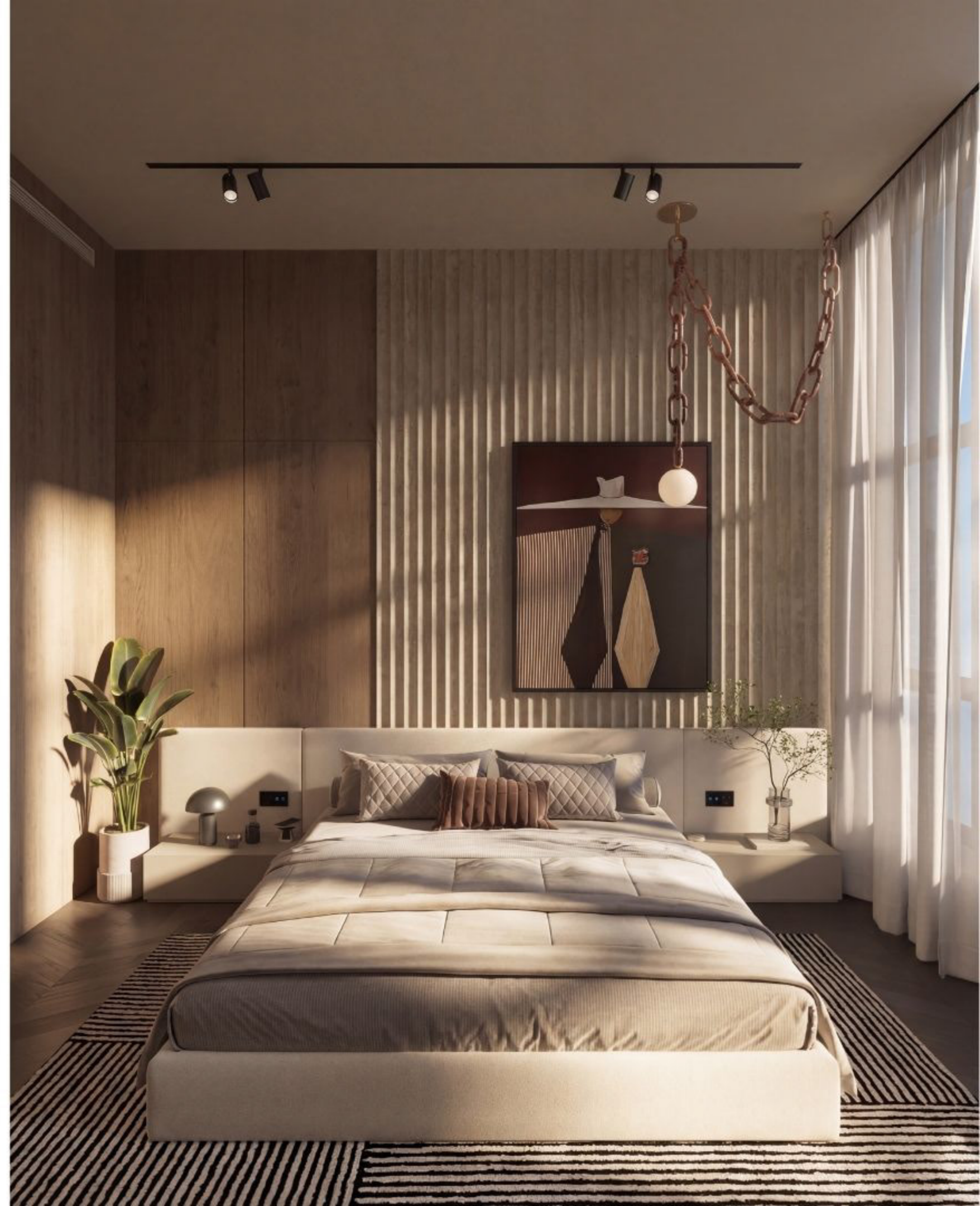
View 09- Bedroom Overview



BEDROOM

View 10- Sleeping Area

Detail 08- Wall art





BEDROOM

View 11- Dressing Area

View 12- Open shelves





BEDROOM

View 13- Multifunctional Wall
Detail 09- Integrated Desk



BEDROOM

View 14- Media wall + Desk
Detail 10- Storage Solutions



BATHROOM

View 15- Bathroom Overview
Detail 11- Tray

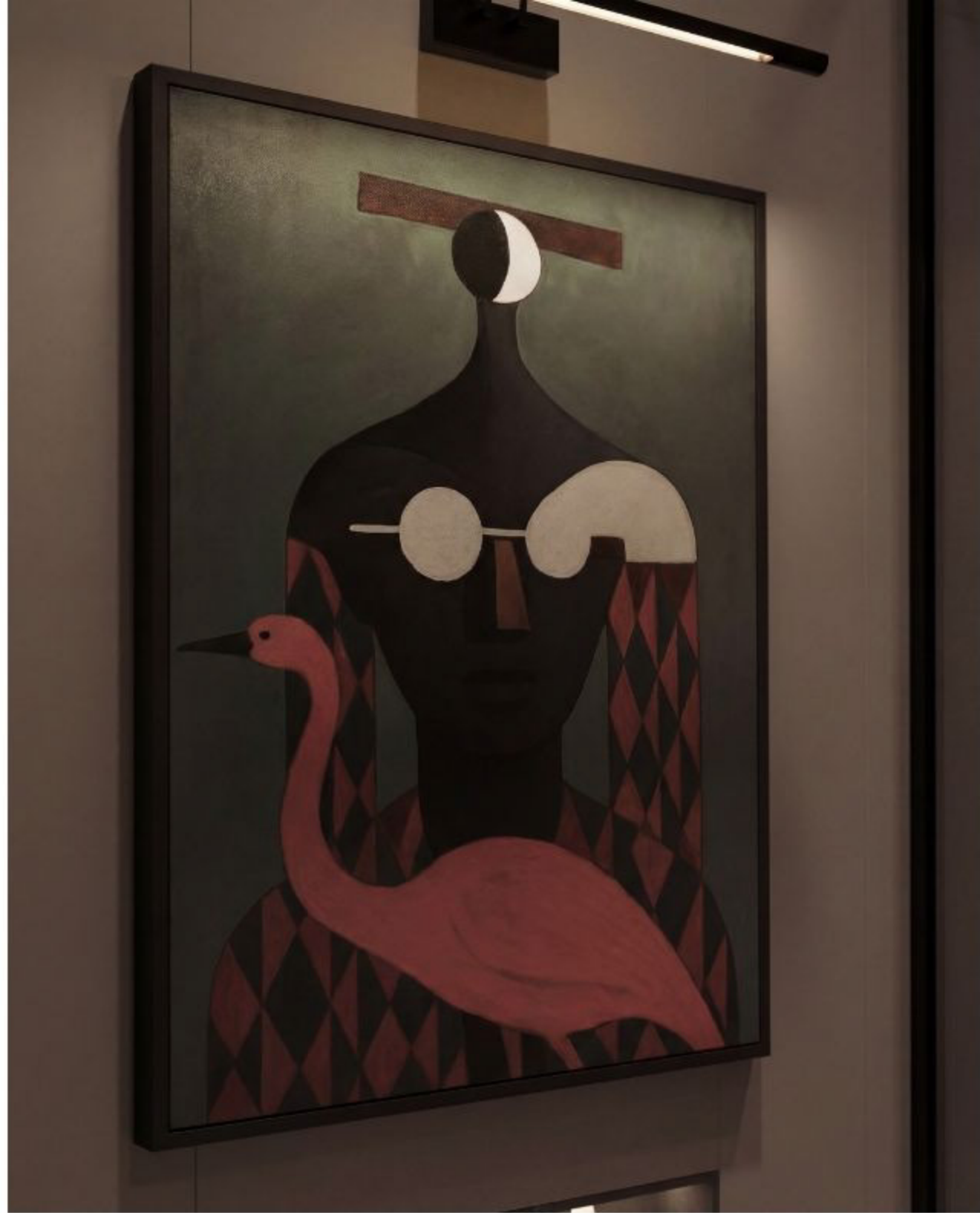




BATHROOM

View 16- Bathroom Side Perspective
Detail 12- Storage Solutions





BATHROOM

View 17- WC Area

Detail 13- Wall art



THANK YOU

Marina Shores Apartment

Interior Design & 3D Visualization

Interior Designer: Manar Felemban

Date: December 2025

