



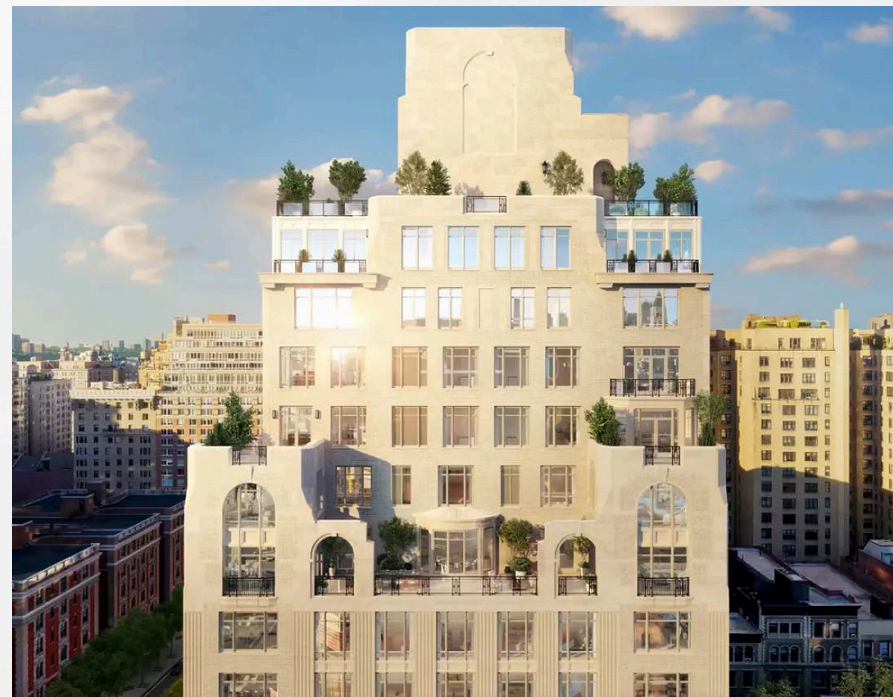
DESIGN PORTFOLIO

2026

MONICA FALARDEAU



PROJECTS



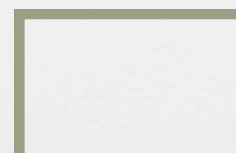
SHELTER & RESIDENTIAL
PAGE FOUR TO SIX



HOSPITALITY
SEVEN TO NINE



COMMERCIAL
TEN TO FOURTEEN



ABOUT



Professional Summary

Detail-oriented and creative Corporate Event Planner turned Interior Designer with a strong background in luxury hospitality and corporate environments. Leveraging 15+ years of experience in investment banking and high-profile corporate event planning, I bring a unique blend of organizational expertise, design sensibility, and client relationship management.

Neuroinclusive and research based, my work blends timeless character with modern principles. I put people first and buildings second, and my environmentally conscious approach leads to elevated spaces that nourish you and your brand.

I hold a Bachelor of Interior Design Degree (with Distinction) from Yorkville University.

Interior Design Experience

Freelance Interior Designer | MF. DESIGNS

- Develop and execute design concepts, focusing on functionality, aesthetics, and brand identity.
- Create detailed floor plans, mood boards, and 3D renderings using AutoCAD, SketchUp, Revit, and Adobe Creative Suite.
- Manage project timelines, budgets, and material sourcing to ensure seamless execution.
- Specialize in space planning, furniture selection, and neuroinclusive design solutions.

Corporate Experience

Senior Corporate Event Planner & Executive Assistant
Canaccord Genuity Corp., March 2006 – May 2020

- Planned and executed high-profile corporate events, conferences, and hospitality experiences for investment banking clients.
- Designed event spaces, including sourcing, overseeing setup, layouts, and branding to create immersive guest experiences.
- Managed vendor relationships, budgets, and logistics, ensuring flawless execution of complex corporate functions.
- Provided executive support to Global Head of Energy, maintaining a high level of professionalism and confidentiality.
- Developed strong project management skills, coordinating multiple stakeholders and tight deadlines.



HAITI DOME



PROJECT

EARTHQUAKE SHELTER - HAITI

Based on the lightweight framing of a geodesic tent, the Haiti Dome provides a sturdier shelter, utilizing pressed panels which snap to the frame vs tenting fabric. These provide added security as well as better protection from the elements. As a structure, domes are strong and durable; their curved shape allows them to be energy efficient, as well as resistant to strong winds and earthquakes

COLOR SCHEME



CONCEPT: THE NET

Honoring Haiti's Caribbean roots, the net pays homage to the sea. Just like a fishing net can be repaired once its broken, so too can a community come together and restore after disaster strikes. Strengthening connection points and weaving together an even stronger foundation that can withstand new storms.

This demountable and earthquake proof shelter, seeks to provide a sense of togetherness and security to a rebuilding populace.

ASSEMBLY

process

1

flooring

REMOVE DOME KIT FROM FLAT PACK.
LAY DOWN MODULAR FLOORING BASE. FILL COMPARTMENT BASES WITH SAND OR WATER TO WEIGHT DOWN FLOORING.



2

frame assembly

ASSEMBLE DOME FRAME BY CONNECTING ALUMINUM RAILS TO SLOT CONNECTORS ON THE FIRST LEVEL. BOLD SUPPORT FEET TO DOME FRAME. ONCE BOTTOM ASSEMBLY IS COMPLETE, SLIDE IN BOTTOM SHINGLE PANELS INTO RAIL CHANNELS. SNAP ON SECOND LEVEL FRAME PIECES AND CONTINUE ASSEMBLY.



3

interior walls

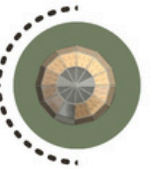
ASSEMBLE INTERIOR WALL MODULAR PANELS. BOLT FRAME SUPPORT FEET TO DOME BASE.



4

roof and deck

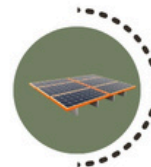
ASSEMBLE DOME ROOF PANELS SEPARATELY BY FIRST CONNECTING THE FRAME AT THE ROOF PEAK. ATTACH ROOF UNIT TO SECOND LEVEL OF DOME PANELS.
ASSEMBLE MODULAR DECK BOARDS. BOLT SIDE EDGE TO DOME FLOORING.



5

fixtures

HOOK UP SOLAR PANEL TO CONNECTION UNIT AND SET UP OFF GRID BATHROOM AND KITCHEN SYSTEMS (COMPOSTING TOILET, SHOWER, BATHROOM AND KITCHEN SINK).



KEY ELEMENTS

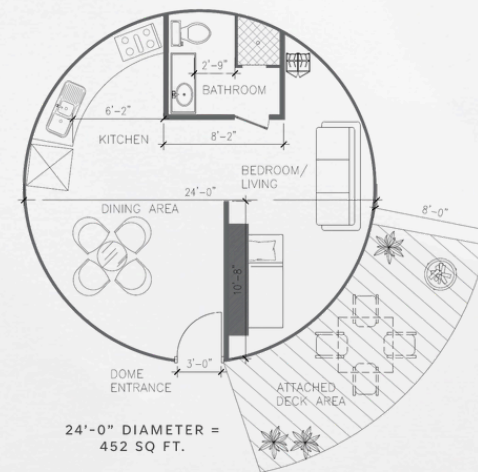


Major material components of the Haiti Dome keep it sustainable and minimize its impact on the environment. The upper dome panels are made from pressed perennial grasses, an OBS board alternative.

OFF-GRID

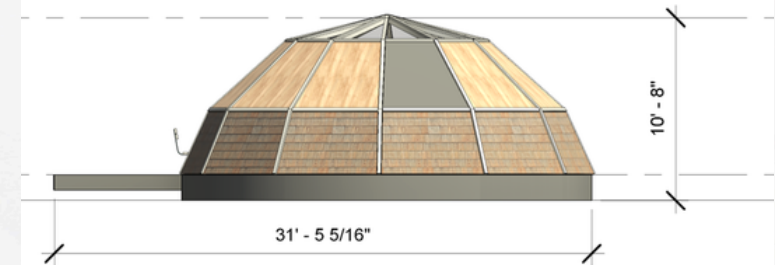


FLOOR PLAN

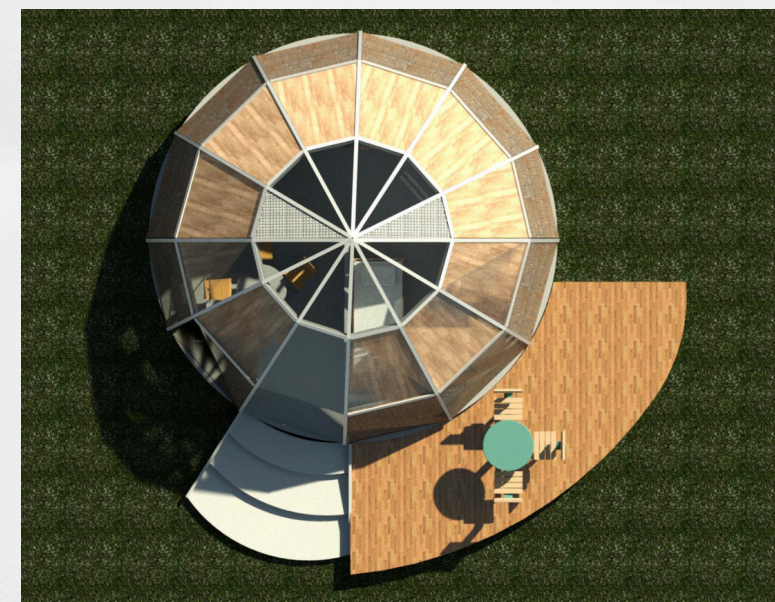
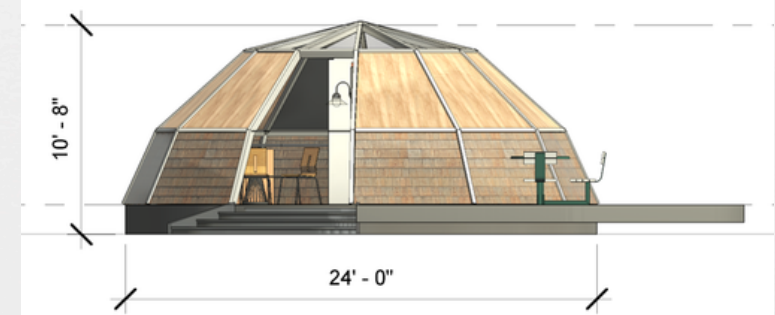


CONCEPT MODEL

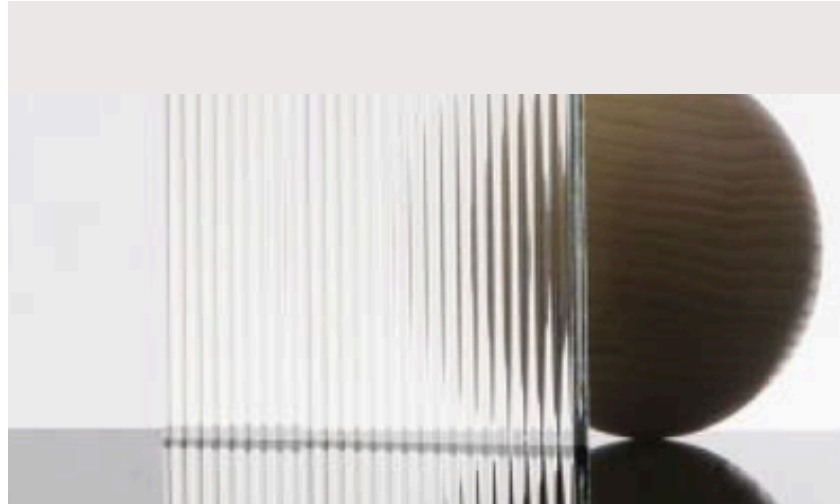
NORTH ELEVATION



SOUTH ELEVATION



NYC LOFT



PROJECT

Urban Loft Project- Primary Residence
Midtown, New York, NY

Loft renovation and common area

COLOR SCHEME

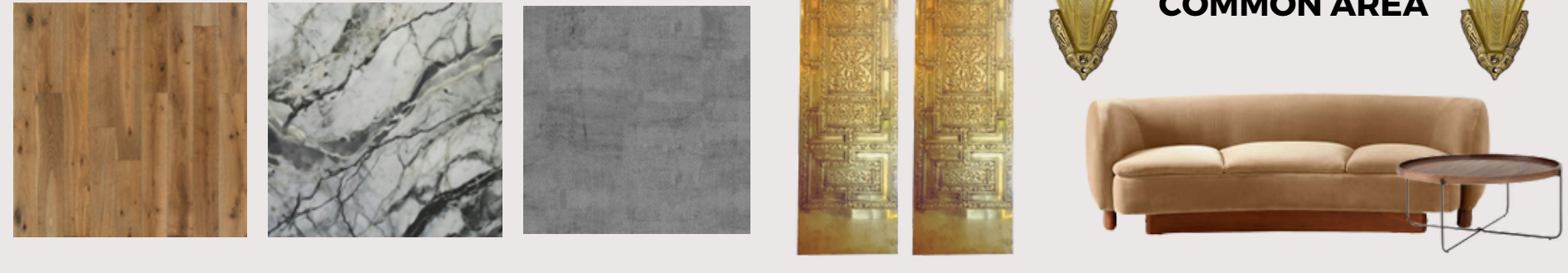


CONCEPT: GLASS

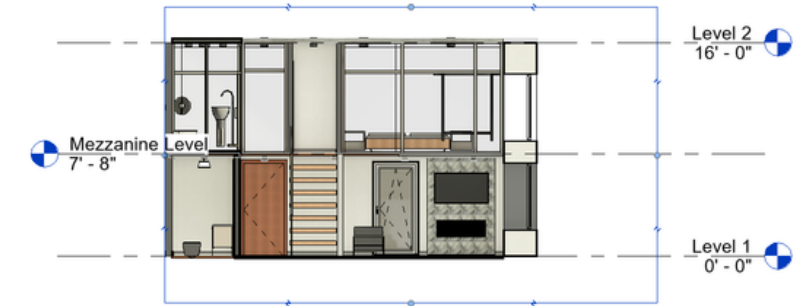
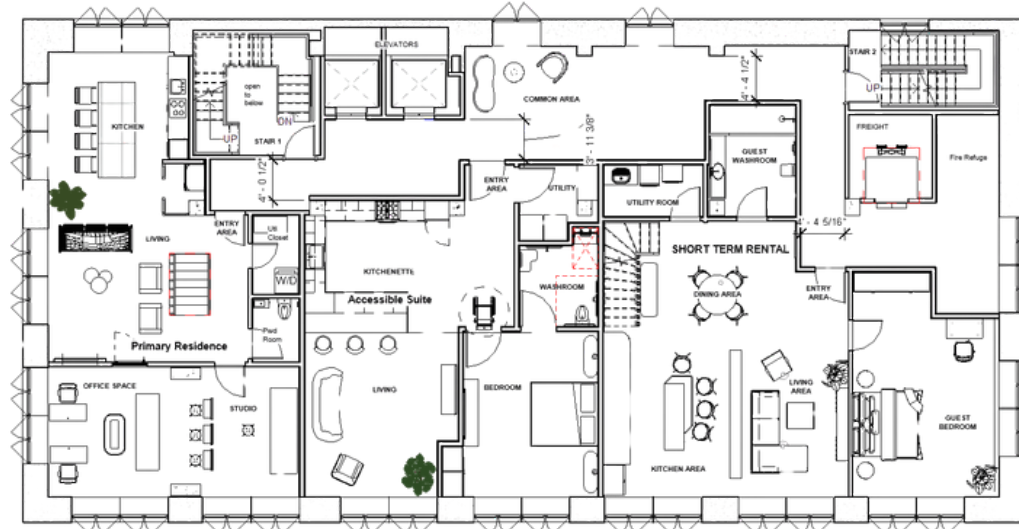
Glass frames New York's unparalleled vistas, capturing the city's vibrant pulse and weaving an ambiance that captivates the eye. It welcomes daylight with open arms, infusing the residence with a gleaming vitality.

Mirroring glass' versatile spirit, the primary residence morphs effortlessly between home and studio. Its design, akin to a Jenga tower's layered elegance, features stacked glass levels that bestow a geometric ethereality upon the loft.

KEY ELEMENTS



FLOOR PLANS



LIGHTING



NYC LOFT

PROJECT

Urban Loft Project- Primary Residence
Midtown, New York, NY

LoPft renovation and common area

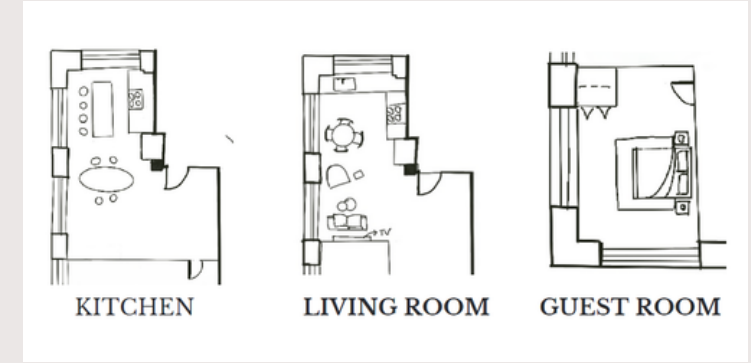
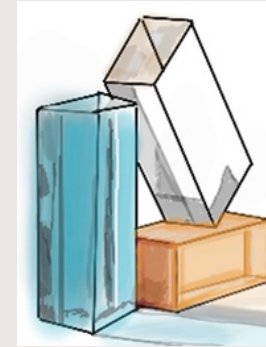
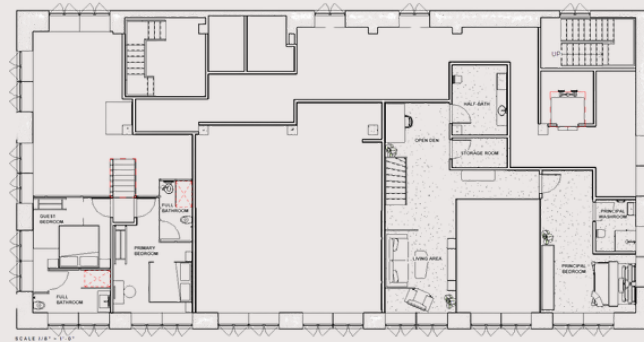
COLOR SCHEME



FF&E - POWDER ROOM



PROJECT SKETCHES



KITCHEN - FINISHES



PRAIRIE & SCYTHE



PROJECT

3574 Garrison Gate SW
Calgary, AB

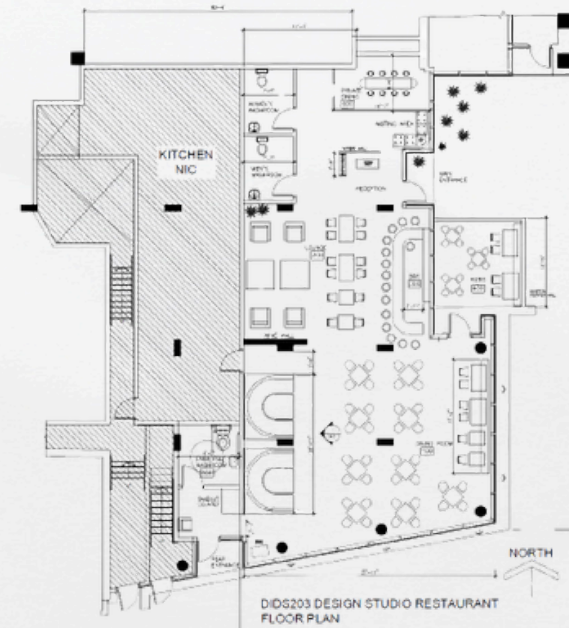
COLOR SCHEME



CONCEPT - HARVEST GOLD – *an elevated, vegan dining experience*

Drawing inspiration from the abundant wheat and grain farms in Southern Alberta, “harvest gold” calls to mind sprawling fields in the prairie sun. Providing a local connection to the land and offering a high end, plant based menu for the discerning diner.

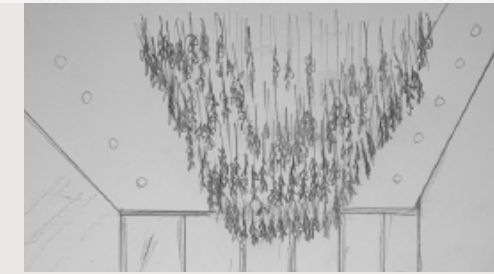
An updated take on a 70s staple color palette, harvest gold also echoes a “groovier” era where everything shone with a bit of gold. Employing color theory, yellows (in a re-imagined form as dark golds) stimulate the appetite, while cerulean accents provide a balanced contrast.



LOUNGE



PRIVATE ROOM



Ceiling concept sketch - custom wheat shaft installation in tinted lucite



PRAIRIE & SCHYTE



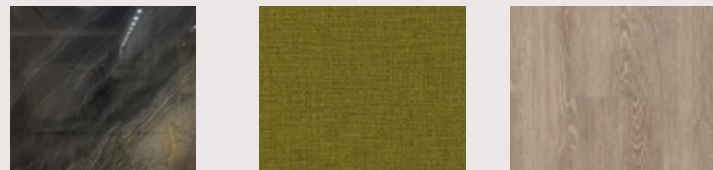
PROJECT

3574 Garrison Gate SW
Calgary, AB

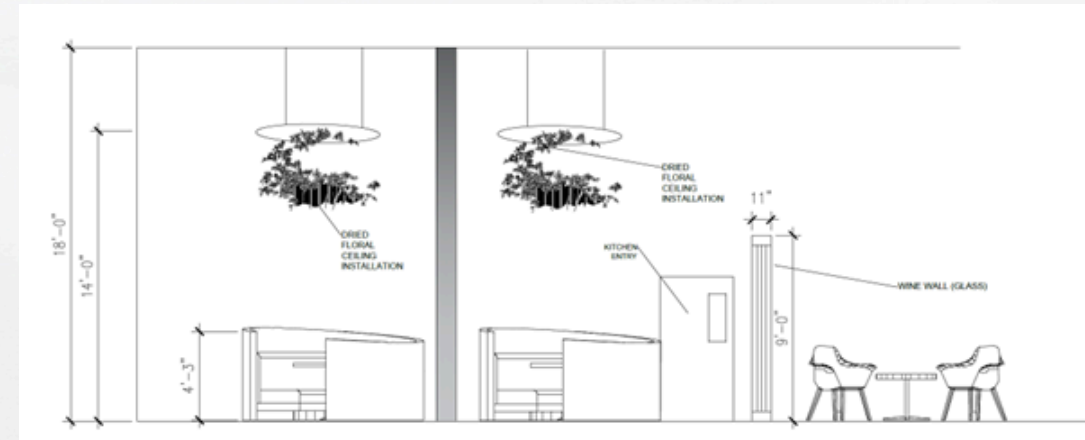
PATIO



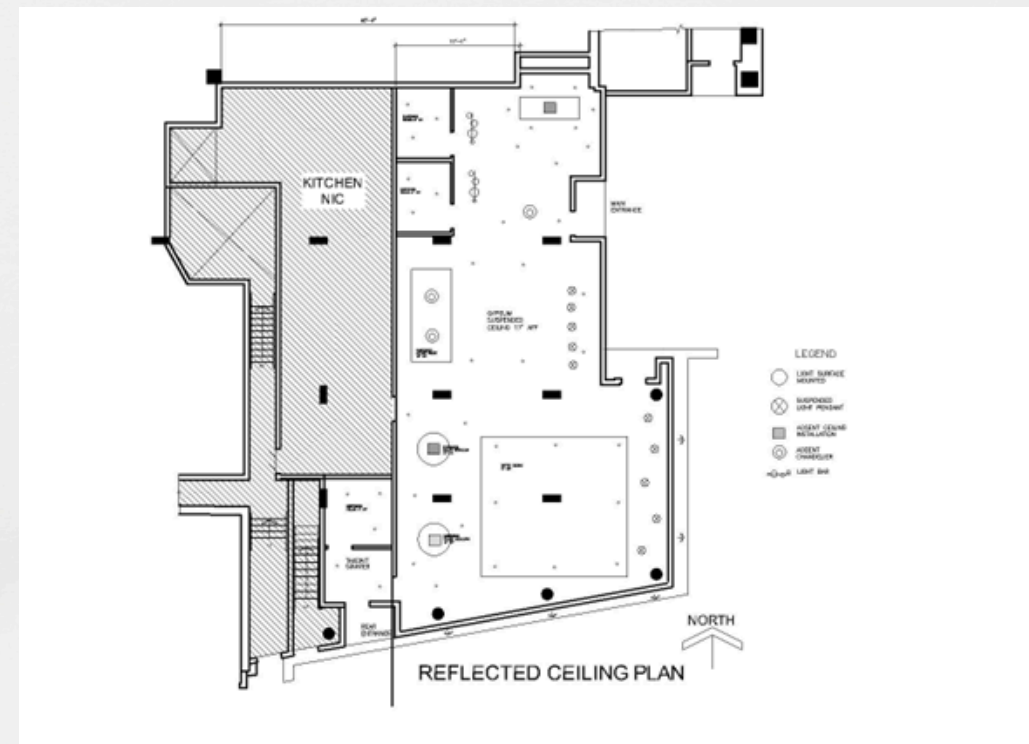
KEY ELEMENTS



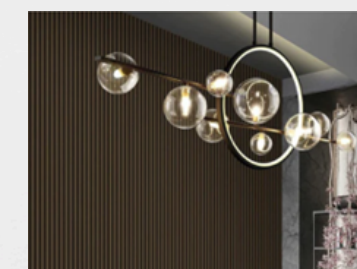
BOOTH AND DINING



LIGHTING PLAN



LIGHTING SELECTION



HIVE HOTEL



PROJECT

Sterling Inn & Spa
5195 Magdalen St, Niagara Falls, ON L2G 3S6

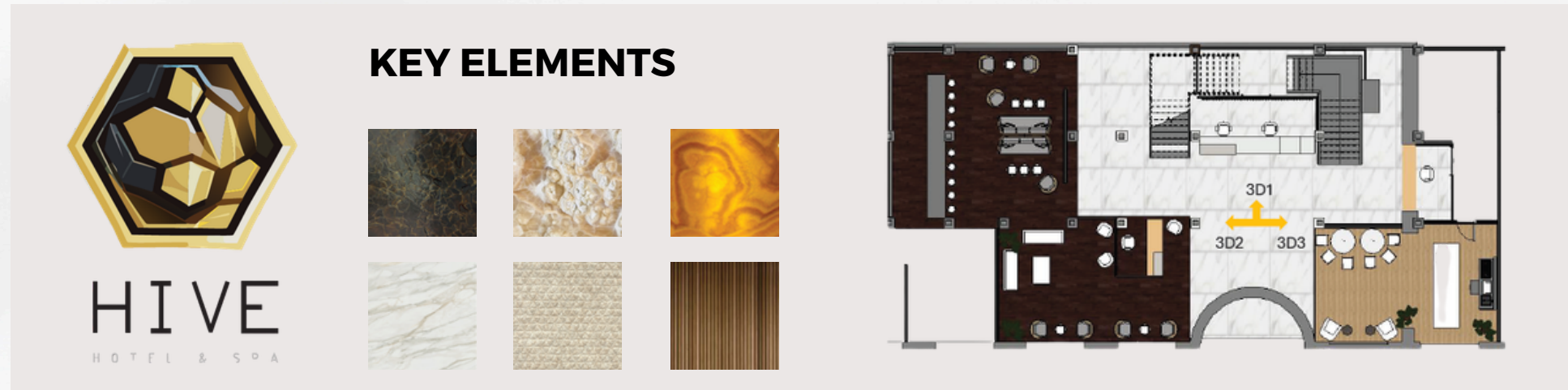
A collaborative renovation and rebranding of a boutique hotel.

COLOR SCHEME

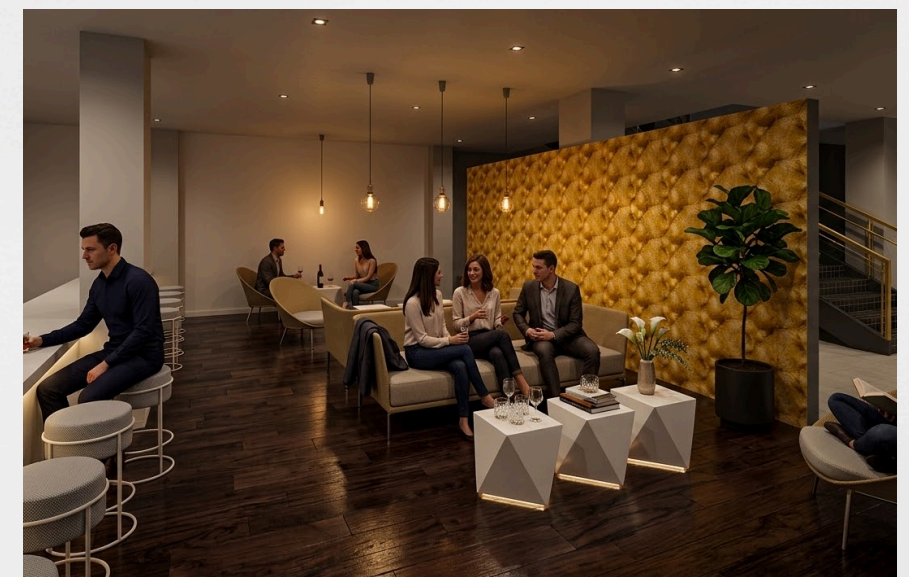


Inspired by the Milk & Honey design concept, the Hive Hotel embraces a palette of whites, creams, and greiges, enriched with accents of amber, brown, charcoal, and black to create an elegant, warm, and welcoming environment. Sustainability, durability, and the use of natural materials guided the overall selection of finishes and furnishings.

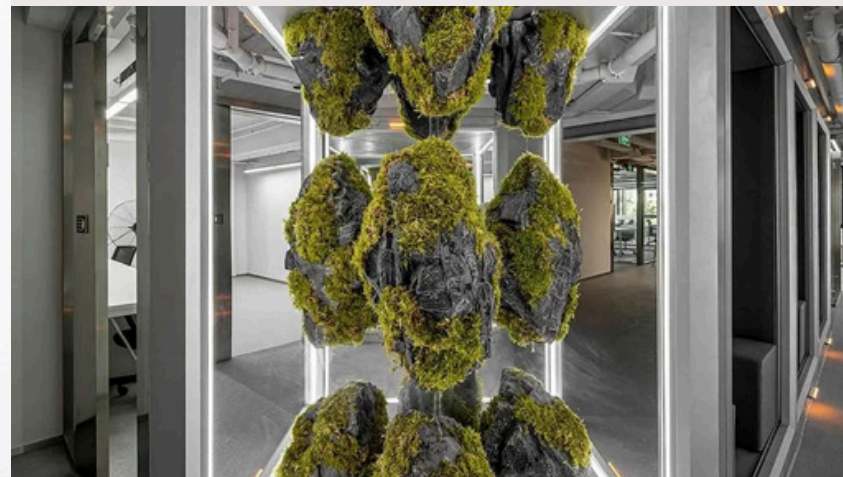
Feature walls behind the reception desk, bar, and lounge introduce vibrant contrast to the softer surrounding tones. These statement elements help define each area, add visual interest, and create a sense of privacy between adjacent spaces.



FF&E COMMON AREAS



GHGSat OFFICE



PROJECT

Wood Gundy Building
11 Adelaide Street West
Toronto, ON

COLOR SCHEME



CONCEPT: TERRA

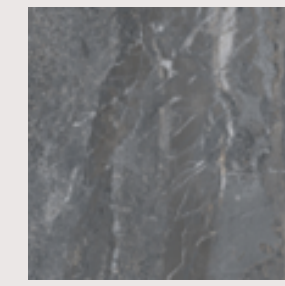
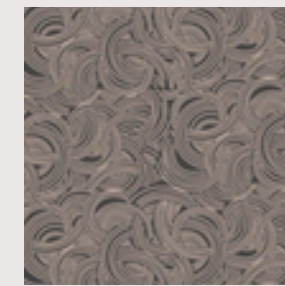
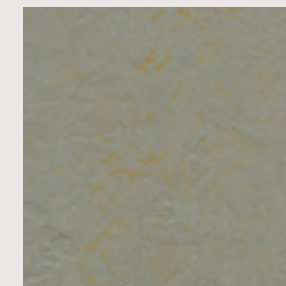
Terra; the planet, our most vital life force. Uniting together GHGSat's mission to save our planet with the desire to provide an alimentative environment for its employees, Terra seeks to establish a deep connection to the Earth. Introducing biophilic design principles to promote the ultimate air quality, along with a reduction in stress, allowing employees to eel their best while preforming at optimum levels indicative of their talents.

Materials and finishes chosen for GHGSat's Toronto office are rooted in sustainability with extra priority given to reducing carbon emissions.

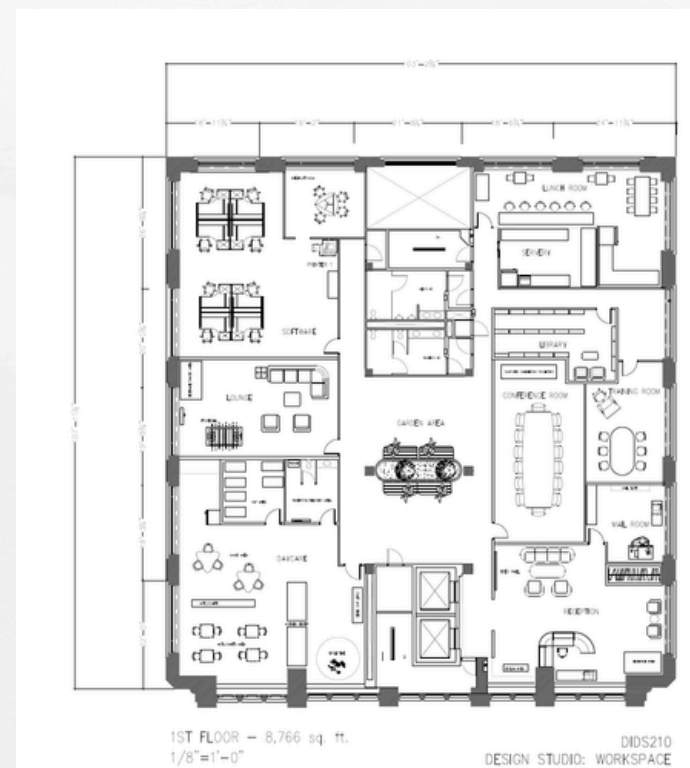
AMENITIES AND SUSTAINABILITY:

- Onsite daycare
- State of the art air filtering systems and no VOC paints and finishes
- Biophilic design principles
- Onsite Wellness Bar
- Privacy and garden pods for solo breaks or out of the box collaboration
- Ergonomic, top of the line desking and equipment, mitigating repetitive task fatigue

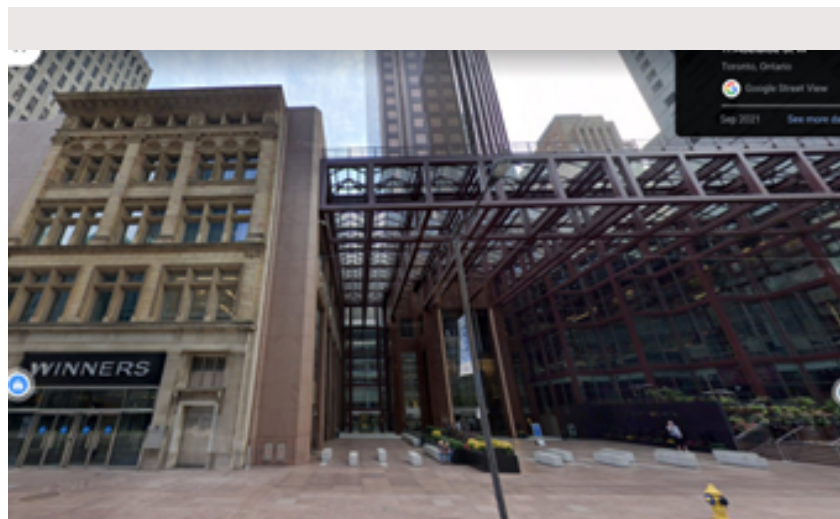
KEY ELEMENTS



FIRST FLOOR

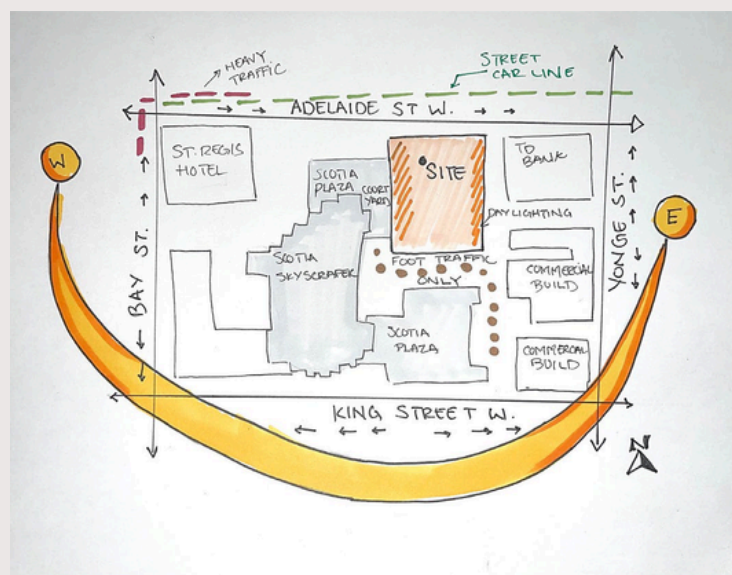


GHGSat OFFICE

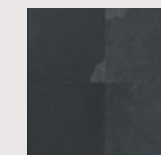
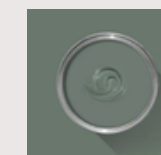
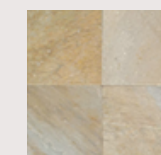
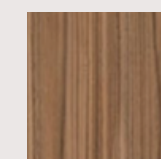
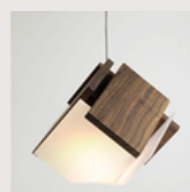
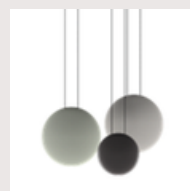
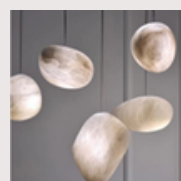


SITE ANALYSIS

Repurposed Heritage Building
Heritage Status: Designated under Part IV Ontario Heritage Act
Year Completed: 1898
Main Style: Renaissance Revival
Building Type: Mid Rise (4 floors)
Current Use: Commercial
Number of Floors: 4 total; 2 occupied for project



LIGHTING AND CEILING



SECOND FLOOR



WELLNESS BAR AND LOUNGE



CO-WORKING SPACE



PROJECT CROSS SECTION: NORTH-SOUTH



AZZURITE MEDI CLINIC



PROJECT

Medical Clinic Project
Barrie, ON

COLOR SCHEME

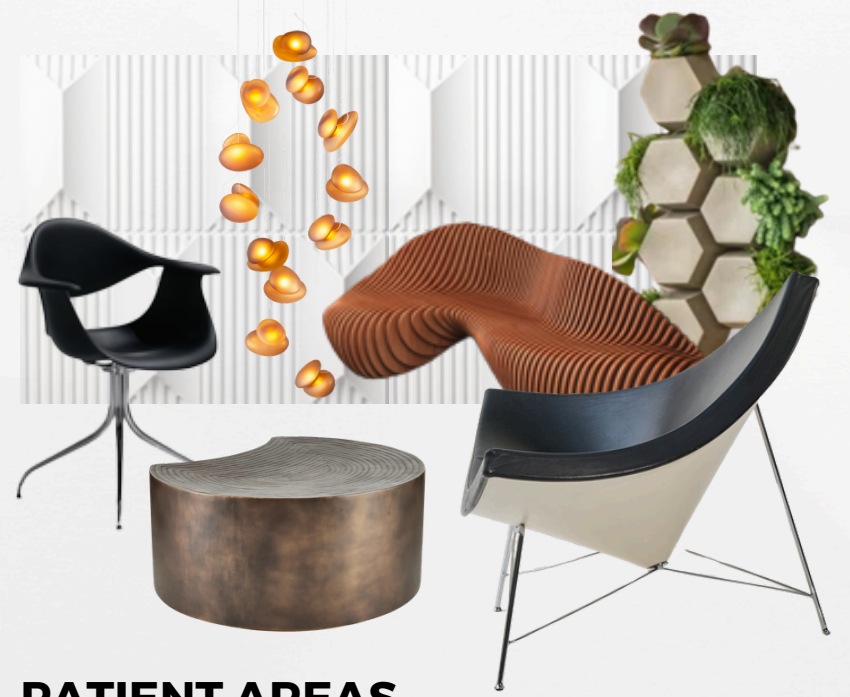
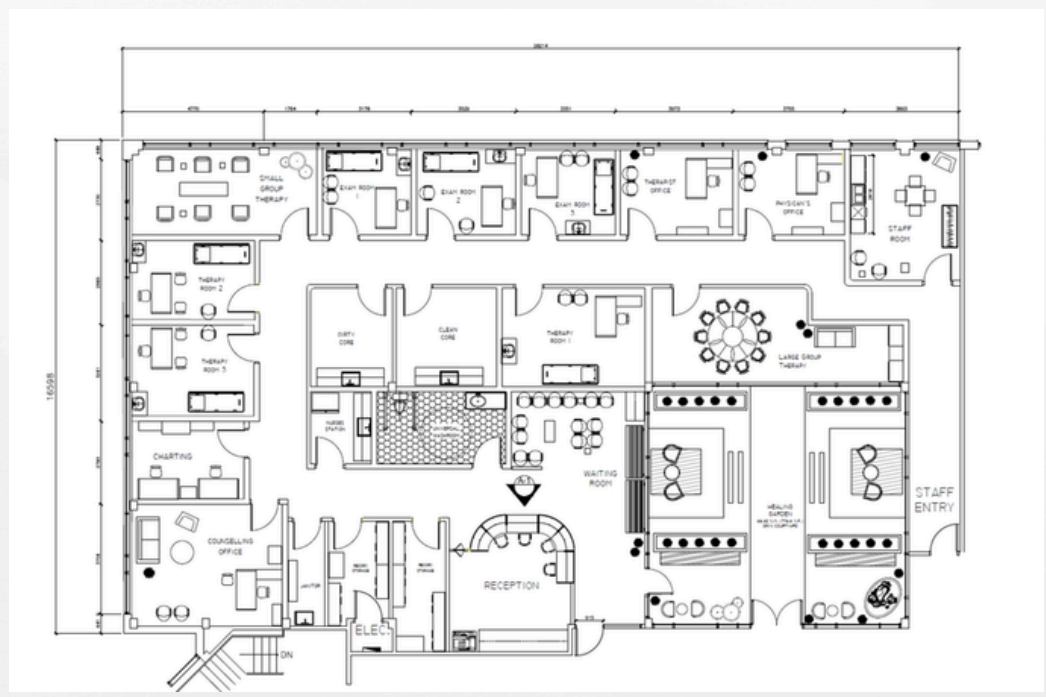
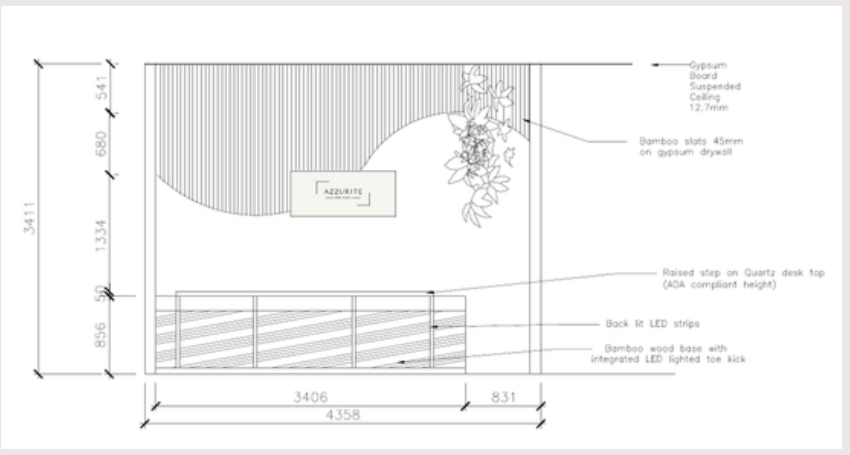
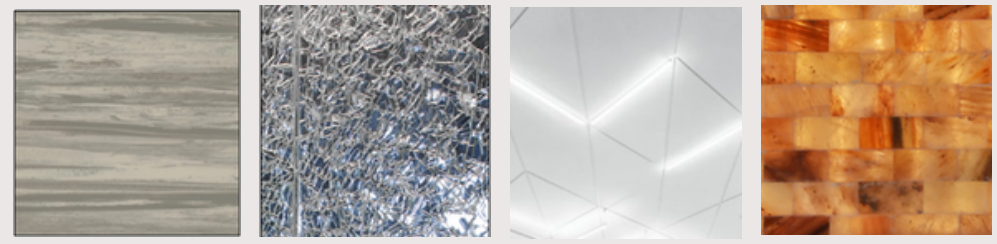


CONCEPT: CRYSTALLUM

The Latin word for crystal, *crystallum* invokes a holistic approach to medicine rooted in the earth. Organic, strong and healing all come to mind to describe a practice which marries cutting edge medicine with an integrated approach.

Azzurite Medi Clinic seeks to marry together a traditional medical practice with a holistic mental health practice. Azurite—colloquially known as "stone of heaven"—is commonly believed to remove "blockages in life so you can flourish and this also applies to physical blockages that could be harming your health.

KEY ELEMENTS



PATIENT AREAS



SKETCH-UP RENDER

SPROUT & SHINE THERAPY CLINIC



THESIS PROJECT

Pediatric Rehabilitation Clinic
4838 Richard Rd SW, Calgary, AB

COLOR SCHEME



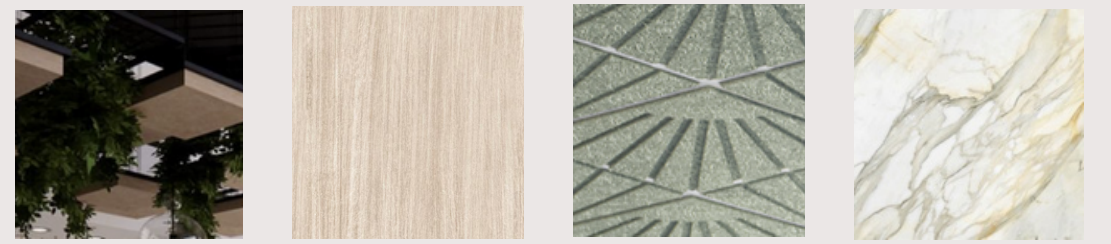
“ THE GROVE ”

“The Grove” reimagines pediatric rehabilitation through the lens of an immersive, nature-inspired experience. The clinic network is a sanctuary which inspires children to find their voice and achieve their personal goals through joyful healing and innovation. Utilizing a playful forest as a backdrop, the sensory friendly therapy center seeks to empower clients in their daily lives.

Natural textures, flowing layouts and intuitive wayfinding create a cohesive narrative which gently dissolves clinical barriers and promotes meaningful engagement.



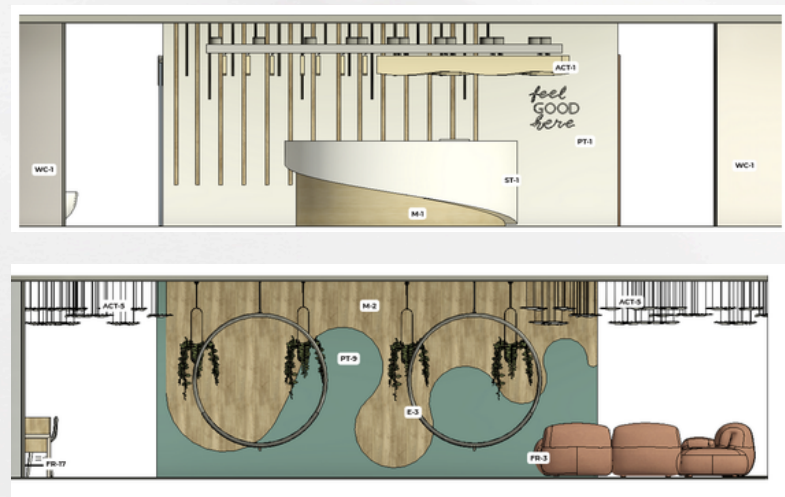
KEY ELEMENTS



CLINIC FLOOR PLAN



ELEVATIONS - RECEPTION



SPROUT & SHINE THERAPY CLINIC

PROJECT

Pediatric Rehabilitation Clinic
4838 Richard Rd SW, Calgary, AB

PHYSIOTHERAPY CORE



This project focuses on three key therapeutic zones: the physiotherapy core, the speech and occupational therapy core, and the group therapy wing.

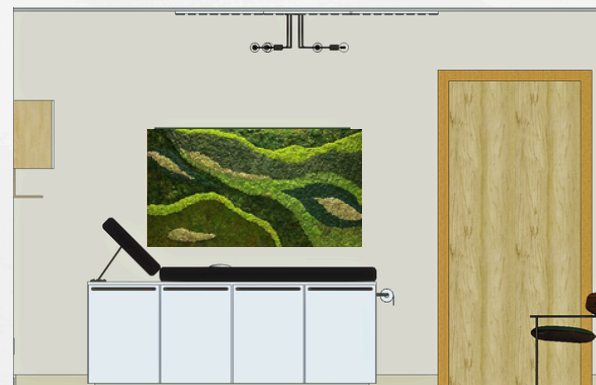
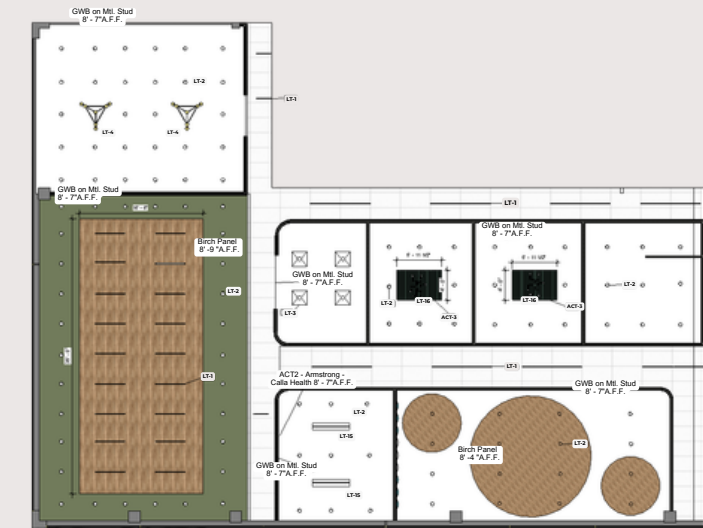
Each space is designed to balance sensory adaptability, comfort, and clinical functionality. Biophilic materials, low-VOC flooring, and warm, natural finishes establish a calming foundation throughout.

Lighting is highly curated, with layered, user-controlled solutions that support regulation and reduce over-stimulation; an essential consideration for children with sensory sensitivities. Movement-based waiting areas, tactile wall features, and curvilinear furnishings create supportive experiences for a range of sensory needs. Smart shading systems and acoustic ceiling treatments further enhance comfort, daylight quality, and sound control. Together, these elements form a neuroinclusive, child-centered environment that promotes emotional well-being and therapeutic engagement.

FLOOR PLAN - PHYSIO CORE



RCP



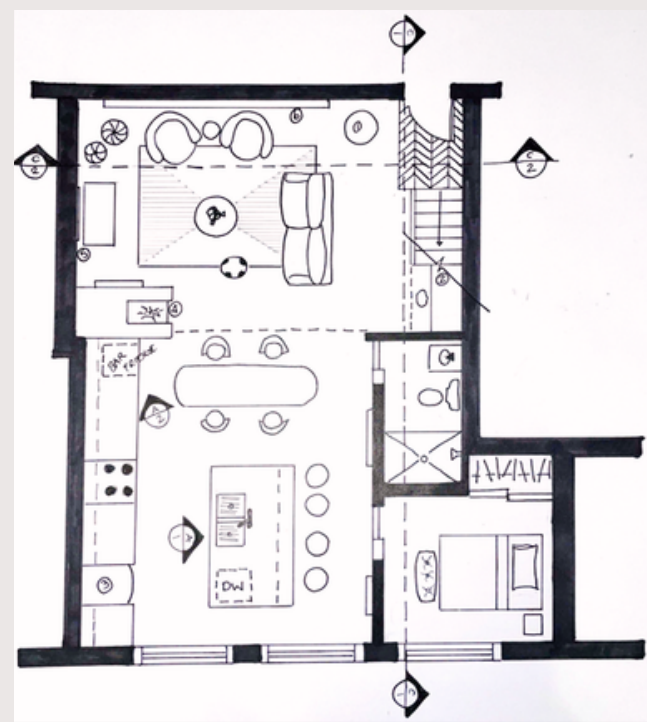
PHYSIO CONSULTATION ROOM

FF&E - PHYSIO CORE



TECHNICAL DRAWINGS

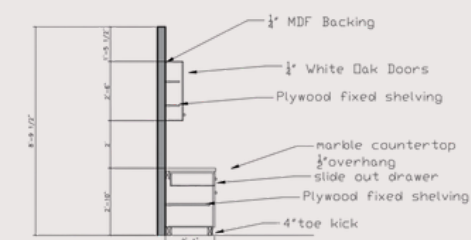
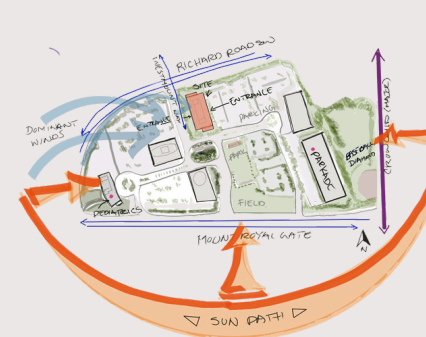
HAND DRAFTING



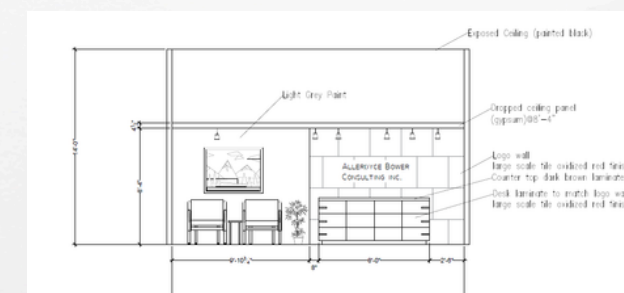
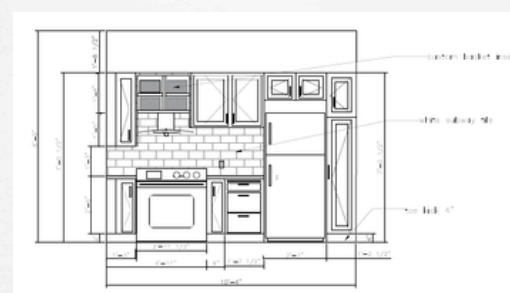
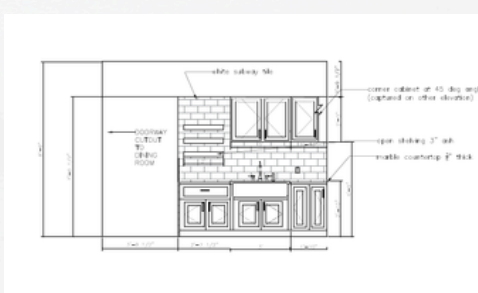
CONCEPT MAPPING



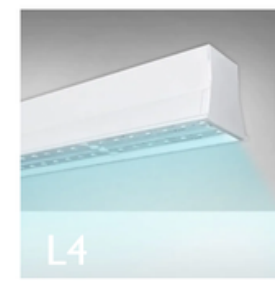
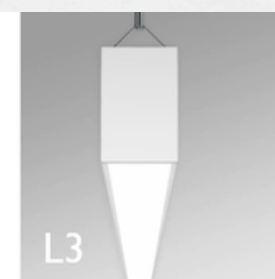
DRAWINGS & DETAILS



ELEVATIONS



LIGHTING SCHEDULES



TYPE	DESCRIPTION	LAMP	MOUNT	MAN.	COMMENTS
L1	Med Master Recessed Downlights – 4"; .125" High-Impact Clear Acrylic	LED, Minimum 82 CRI, Color Temperature 3700K; Standard 0-10V dimming	Recessed ceiling mount	Kenall	Round Aperture using Indigo-Clean Technology, Provides on-demand environmental disinfection via LED light, Dry/wet rated
L2	Troffer 24" Round shape	LED 4000K and 90 CRI	Ceiling Mount	Kenall	
L3	2.5-Inch Antimicrobial Linear LED Pendant Light	LED 3500K, 90 CRI	Surface ceiling mount	Alcon Lighting	Occupancy Sensor, antimicrobial finish, 1/2" drop lens for even distribution
L4	Antimicrobial Linear UVC Disinfection Light	LED 4000K and 90 CRI	Surface ceiling mount	Alcon Lighting	275nm UVC light to combat common pathogens in enclosed environments
L5	16-Inch Color Temperature Selectable Pendant LED Disk Light	25W LED, which delivers 2525 lumens with a 90 CRI, 3000K	Surface ceiling mount with drop	Alcon Lighting	Black finish, white acrylic diffuser ensures even illumination
L6	2 Tier Architectural Pendant Inner/Outer LED Ring Chandelier	25W LED, which delivers 2525 lumens with a 90 CRI, 3500K	Surface ceiling mount with drop	Alcon Lighting	Black finish
L7	Sanitary Vanity Mirror	LED Side lighting	Wall Mounted	Roca Lighting	
L8	Emergency Light	All-Pro APC7RG LED red / green selectable combination exit sign and emergency light	Ceiling Mounted	Cooper Lighting	Runs 90 minutes without power

CONTACTS



Phone : (587) 226-6106

Website : <https://monicafdesigns.com/>

Email : monica.falardeau@gmail.com

THANK YOU