



PARTS & SUPPLY

Genuine Components for Frac Tanks • Containers • Poly Tanks • Bypass Systems



CONTENTS

Frac Tanks Components	3
Berms	3
Container Components	4
Fastener Kits	4
Floats	5
Gaskets & Seals	5
Grip Strut	6
Liners	6
Manways	6
Mixer Components	7
Manufactured Products	8
Pipe Valve & Fittings	9
Poly & PVC Components	11
Rollers & Wheels	11
Stickers	12
Tarp Components	13

PRODUCT LIMITED WARRANTY

Pinnacle Manufacturing, LLC warrants to its original customer that each new product produced by Pinnacle be free from defects in material and workmanship under normal use and service.

For main structural components, Pinnacle's warranty extends for a period of twelve (12) months beginning upon the day of shipment from Pinnacle's plant. Pinnacle's obligation under this warranty is limited to repair of the product or replacement of a part with the same or similar part that is found to be defective. Components manufactured by other vendors will be warranted as to that manufacturer's warranty terms only.

For exterior and interior coatings, Pinnacle's warranty extends for a period of six (6) months beginning upon the day of shipment from Pinnacle's plant, provided that no substance has been placed in or applied to the product that is incompatible with said coatings. If any question arises as to the incompatibility of any substance with the coatings, the customer should contact Pinnacle prior to use. Failure to do so may void the warranty and result in denial of warranty.

Pinnacle's obligations to its original customer under this warranty are limited to the repair or replacement of defective parts free of charge for products returned F.O.B. its plant. Pinnacle's obligations shall not include and this warranty specifically excludes all transportation costs to and from Pinnacle's customer.

THIS WARRANTY EXCLUDES AND PINNACLE SHALL UNDER NO CIRCUMSTANCES BE LIABLE FOR LOSS OF PRODUCT, DOWN TIME, CONTAINER SERVICE, LABOR CHARGES, MANUFACTURING COSTS, LOSS OF PROFITS, INCIDENTAL, SPECIAL OR CONSEQUENTIAL DAMAGES WHETHER DIRECT OR INDIRECT.

This warranty shall not apply to any product that has been damaged due to misuse, misapplication, negligence, alteration, modification, unauthorized repair, accident, lack of normal and customary maintenance, actions of third parties, natural disasters, acts of nature and damage during shipment. This warranty does not apply to normal maintenance and service, or to deterioration of appearance of products due to normal use and exposure.

THIS WARRANTY IS THE ONLY WARRANTY APPLICABLE TO PRODUCTS MANUFACTURED BY PINNACLE AND IS EXPRESSLY IN LIEU OF ALL OTHER WARRANTIES EXPRESSED OR IMPLIED INCLUDING ANY WARRANTY OF MERCHANTABILITY OR FITNESS FOR A PARTICULAR PURPOSE.

The customer must contact Pinnacle and obtain a warranty authorization number before any warranty work is performed. FAILURE TO OBTAIN A WARRANTY AUTHORIZATION NUMBER MAY RESULT IN DENIAL OF WARRANTY.





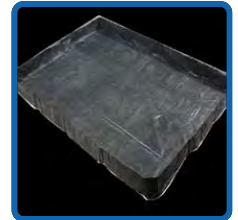
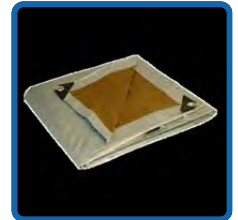
FRAC TANKS COMPONENTS

ITEM #	SALES DESCRIPTION	IDEAL USAGE
120008	7-Way Plug	Frac
120012	Airline Glad Hand Blue	Frac
120013	Airline Glad Hand Red	Frac
119387	Airline NylonTube-3/8 Blue	Frac
119388	Airline NylonTube-3/8 Red	Frac
120014	Axle Hub Cover With Gasket and Plug	Frac
119320	Brake & Light Kit Includes Air Tank, Glad Hands, Bulkheads, Wire Harness, Lights & Grommets	Frac
119828	D-Ring 1/2" 12,000 LBS Weld-On Lashing D-Ring Self-Colored	Frac, Poly, Containers
119701	PV Valve Jayco 8" round hatch set at 16oz pressure .4oz vacuum with Supreme 65 (Buna) gaskets	Frac, Poly, Containers
119876	PV Valve Jayco Peak One 8" round hatch 4oz pressure .4oz vac Blue Viton Vacuum & Wrap Around pressure gaskets Black Viton base gasket Teflon coated castings SS parts	Frac, Poly, Containers
119409	Split Loom 1/2"	Frac



BERMS

ITEM #	SALES DESCRIPTION	IDEAL USAGE
119858	Berm 12' x 12' x 12" 40ml Liner Low Density Polyethylene w/16 L-Brackets	Frac, Poly, Containers
119859	Berm 12' x 25' x 12" 40ml Liner Low Density Polyethylene w/28 L-Brackets	Frac, Poly, Containers
119860	Berm 12' x 50' x 12" 40ml Liner Low Density Polyethylene w/42 L-Brackets	Frac, Poly, Containers
119861	Berm L-Bracket 12"x12" Aluminum	Frac, Poly, Containers
119862	Berm Pad 10oz. 12'6" x 12'	Frac, Poly, Containers
119863	Berm Pad 10oz. 12'6" x 25'	Frac, Poly, Containers
119864	Berm Pad 10oz. 12'6" x 50'	Frac, Poly, Containers
119865	Berm Repair Tape	Containers





CONTAINER COMPONENTS

ITEM #	SALES DESCRIPTION	IDEAL USAGE
119214	Container Bullnose	Containers
	Container Door Seal Angle No Header, 1/2" x 1/2" x 1/8" angle: 2 - 96" / 4 - 48" / 2 - conners	Containers
	Container Door Seal Angle w/ Header, 1/2" x 1/2" x 1/8" angle: 4 - 96" / 4 - 48" / 4 - corners	Containers
120050	Container Door T-Seal Kit - No Header 21 Feet	Containers
120051	Container Door T-Seal Kit with Header 26 Feet	Containers
319008	Container Ground Roller Bracket	Containers
319041	Container Handle Lock - Plate 3/8" - Not Painted	Containers
319000	Container Hinge Assembly (2 Door brackets, 1 Container side leaf with knuckle and zerk fitting, Hinge pin with caped tip and cotter pin, 2 Bearing washers)	Containers
119324	Container Hook 1-1/4" - Not Painted	Containers
319038	Container Latch Hook - Plate 1/2" - Not Painted	Containers
319037	Container Latch Receiver - Plate 1/2" - Not Painted	Containers
319007	Container Long Sill Tube 6" x 2" x 1/4" x 264" Long, Cut 45° One End - Not Painted	Containers
319009	Container Nose Roller Bracket	Containers
319004	Tailgate Assembly S2252 Door, Hinges, Latch Pins, Chains - Not Painted, No Seal, No Seal Angle	Containers
319011	Tailgate Assembly V2254 Door, Hinges, Latch Pins, Chains - Not Painted, No Seal, No Seal Angle	Containers



FASTENER KITS

ITEM #	SALES DESCRIPTION	IDEAL USAGE
120049	Bolt Kit 4" Flange, (8) 5/8"-11 x 5-1/2" Bolt Grade 5, (8) 5/8"-11 Nylon Insert Locknut	Frac, Containers
120050	Bolt Kit 6" or 8" Flange, (8) 3/4"-10 x 6-1/2" Bolt Grade 5, (8) 3/4"-10 Nylon Insert Locknut	Frac, Containers





FLOATS

ITEM #	SALES DESCRIPTION	IDEAL USAGE
119352	Float Gauge Board System Half Travel Complete with Board (0-9) and Guide Wire System	Frac
119351	Float Pointer 2 - 8" SS Balls, Pipe Pivot Arm, Packing Gland	Frac



GASKETS & SEALS

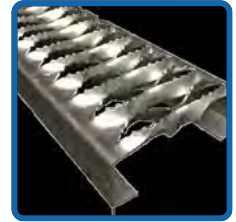
ITEM #	SALES DESCRIPTION	IDEAL USAGE
119884	Gasket 24" Manway EPDM	Poly
119913	Gasket 24" Manway Viton	Poly
119503	Gasket 3" Full Face Buna-N 150#	Frac, Containers
119505	Gasket 4" Full Face Buna-N 150#	Frac, Containers
119501	Gasket 4" Full Face Viton 150#	Frac, Poly, Containers
119506	Gasket 6" Full Face Buna-N 150#	Frac, Containers
119508	Gasket 8" Full Face Buna-N 150#	Frac, Containers
119522	Gasket Combo Manway - White PE 3/8" Pe 32" OD X 24" ID	Poly
119513	Manway Gasket 20" x 5/8" x 5/8" Buna	Frac
119514	Manway Gasket 20" x 5/8" x 5/8" Viton	Frac
119516	Manway Gasket 22" D-Style Buna .71 x 1.25	Frac, Containers
119518	Manway Gasket 22" D-Style Viton .71 x 1.25	Frac, Containers
119519	Manway Gasket 25" x 5/8" x 5/8" Buna	Frac
119520	Manway Gasket 25" x 5/8" x 5/8" Viton	Frac
119521	Manway Gasket 36" x 5/8" x 5/8" Buna	Frac





GRIP STRUT

ITEM #	SALES DESCRIPTION	IDEAL USAGE
119119	Grip Strut 11-3/4" x 1-1/2" x 12 ga Galvanized x 12'L	Frac
119120	Grip Strut 4-3/4" x 1-1/2" x 12 ga Galvanized x 12'L	Frac
119121	Grip Strut 7-1/4" x 1-1/2" x 12 ga Galvanized x 12'L	Frac
119122	Grip Strut Ladder Rung 2-Hole 11ga HR - 21" Length	Frac, Poly



LINERS

ITEM #	SALES DESCRIPTION	IDEAL USAGE
120045	Liner Dewatering 20'Wx30'L 130 Micron 3.5 oz	Containers
119867	Liner Dewatering 20'Wx30'L 300 Micron	Containers
120046	Liner Dewatering 20'Wx30'L 400-600 Micron	Containers
119868	Liner Polyethylene 3ml Form Fitted 19' x 32'	Containers
120047	Liner Polyethylene 6ml Vacuum Box Bladder Bag with Center Manway Spout, 20-25 yard, 5 oz	Containers

MANWAYS

ITEM #	SALES DESCRIPTION	IDEAL USAGE
119363	Manway 22" Carbon Steel, 4" Neck; D-Style Buna Gasket, 5 - 5/8" Wingnut Hardware	Frac, Containers
119364	Manway 25" Carbon Steel, 6" Neck 5/8" x 5/8" Buna Gasket, 6 - 5/8" Wingnut Hardware	Frac
119366	Manway 36" Carbon Steel, 6" Neck; 5/8" x 5/8" Buna Gasket, 8 - 5/8" Wingnut Hardware	Frac
119360	Manway Lid 20" Carbon Steel (Lid Only)	Frac
119362	Manway Lid 22" Carbon Steel (Lid Only)	Frac, Containers
119365	Manway Lid 25" Carbon Steel (Lid Only)	Frac
119368	Manway Wingnuts 5/8" Assembly	Frac, Containers





MIXER COMPONENTS

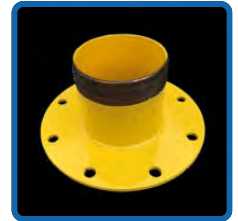
ITEM #	SALES DESCRIPTION	IDEAL USAGE
120001	Mixer 10 HP Electric Motor (C-Face)	Frac
119880	Mixer 2 Starter Box complete with the following, 2 starter build NEMA 7/9 Raled Explosion proof panel with the following: CE 22408 NEMA 7/9 Enclosure, 1 70A Main Circuit Breaker with rotary disconnect, 2-Siemens NEMA Size 1 starters with ESP200 Electronic Overload, 2-Start/Stop Push Buttons one for each starter, 2 - Red Transformer Pilot Lights, one teach starter, 2 Mechanical Overload Reset Buttons, one for each starter	Frac
119879	Mixer 4 Starter Box - XCE 122408 NEMA 7/9 Rated Explosion proof panel, 1 70A Main Circuit Breaker with rotary disconnect, 4 Siemens NEMA Size 1 starters with ESP200 Electronic Overload, 4 Start / Stop Pushbuttons; one for each starter, 4 Red Transformer Pilot Lights; one for each starter, 4 Mechanical Overload Reset Buttons; one for each starter	Frac
120036	Mixer Blade Fasteners Set of 24 / Shaft	Frac
120040	Mixer Blade Fasteners Set of 24 / Shaft, 316 SS	Frac
120006	Mixer Blades 6" x 10" x 3/8" Carbon Steel	Frac
120004	Mixer Blades 6" x 10" x 3/8", 316 SS	Frac
120005	Mixer Blades 6" x 18" x 3/8" 316 SS	Frac
120007	Mixer Blades 6" x 18" x 3/8" Carbon Steel	Frac
120017	Mixer Bottom Seal (Metal)	Frac
120018	Mixer Bottom Seal (Viton)	Frac
120027	Mixer Gearbox KAF87	Frac
120038	Mixer Paddle Hubs, 316 SS, Set of 2	Frac
120037	Mixer Paddle Hubs, Carbon Steel Set of 2	Frac
120003	Mixer Shaft 2 3/8" Carbon Steel (machined, Drilled and Tapped)	Frac
120003	Mixer Shaft 2 3/8", 316 SS, Machined, Drilled and Tapped	Frac
120042	Mixer Top Seal (Metal)	Frac
120043	Mixer Top Seal (Viton)	Frac





MANUFACTURED PRODUCTS

ITEM #	SALES DESCRIPTION	IDEAL USAGE
120061-M	22" Manway Lid with 10" Weld Neck Flange No Blast or Paint	Frac, Containers
120062-M	22" Manway Lid with 12" Weld Neck Flange No Blast or Paint	Frac, Containers
120063-M	22" Manway Lid with 16" Weld Neck Flange No Blast or Paint	Frac, Containers
120064-M	22" Manway Lid with 20" Weld Neck Flange No Blast or Paint	Frac, Containers
120065-M	22" Manway Lid with 6" Weld Neck Flange No Blast or Paint	Frac, Containers
120066-M	22" Manway Lid with 8" Weld Neck Flange No Blast or Paint	Frac, Containers
219011-S	AF501 Stairway and Platform, Powder Coated Yellow	Frac
219021-S	AL470 Stairway, Powder Coated Yellow	Frac
219105-S	AL470-MX, DW Stairway and Platform, Powder Coated Yellow	Frac
219030-S	AL470-OT,GB,WT Stairway, Powder Coated Yellow	Frac
319112	Dewatering Basket 25 Yard 3" x 4.1# Channel Construction 1/4" Perforated Metal Floor 3/4"- #9 Flat Expanded Metal Sides Clean Out Hatches 2 - 24" x 24" Red Oxide Powder Coated	Containers
119852	Manway Vacuum Adapter - 21" to 25" Conical Adapter 2 - 6" Nipples, Conical Gasket, Fasteners	Containers
419003-A	P150-R3 Rear Ladder, Powder Coated Yellow	Poly
419002-A	P150-R3 Stairway and Platform, Powder Coated Yellow	Poly
	P300-FA Stairway and Platform, Powder Coated Yellow	Poly
120054	Pipe Racks 18' x 48" x 48"	Bypass
120049	Reducer Flange 8" X 1/4" Blind with 6" Nipple, Powder Coated Yellow	Containers
120056	Road Crossing 12' with 12" Flange, Powder Coated Yellow	Bypass
120055	Road Crossing 12' with 8" Flange, Powder Coated Yellow	Bypass
120058	Road Crossing 24' with 12" Flange, Powder Coated Yellow	Bypass
120057	Road Crossing 24' with 8" Flange, Powder Coated Yellow	Bypass
120059	Yard Stands 2' x 2' x 27", Set of 2, Powder Coated Yellow	Frac





PIPE VALVE & FITTINGS

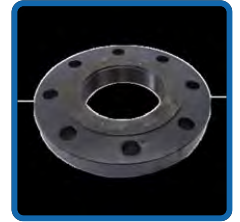
ITEM #	SALES DESCRIPTION	IDEAL USAGE
119803	Butterfly Valve 3" Cast Body, Wafer Style, Buna-N Seat, SS Stem, Nickel Plated Disc	Frac, Containers
119806	Butterfly Valve 4" Cast Body, Wafer Style, Buna-N Seat, SS Stem, Nickel Plated Disc	Frac, Containers
119807	Butterfly Valve 4" Cast Body, Wafer Style, Buna-N Seat, SS Stem, Nylon Coated Disc	Frac, Containers
119810	Butterfly Valve 6" Cast Body, Wafer Style, Buna-N Seat, SS Stem, Nylon Coated Disc	Frac, Containers
119811	Butterfly Valve 8" Cast Body, Wafer Style, Buna-N Seat, SS Stem, Nickel Plated Disc	Frac, Containers
119725	Elbow 3" Schedule 40 Butt Weld 90° Carbon Steel	Frac
119731	Elbow 4" Schedule 40 Butt Weld 90° Carbon Steel	Frac
119733	Elbow 6" Schedule 40 Butt Weld 90° Carbon Steel	Frac
319227	Flange 3" Blind 1/4" A36 Carbon Steel	Frac, Containers
119739	Flange 3" Slip-On 150# Carbon Steel	Frac, Containers
119740	Flange 3" Threaded 150# Carbon Steel	Frac, Containers
119741	Flange 3" Weld Neck 150# Carbon Steel	Frac, Containers
319228	Flange 4" Blind 1/4" A36 Carbon Steel	Frac, Containers
119742	Flange 4" Slip-On 150# Carbon Steel	Frac, Containers
119743	Flange 4" Threaded 150# Carbon Steel	Frac, Containers
119744	Flange 4" Weld Neck 150# Carbon Steel	Frac, Containers
319229	Flange 6" Blind 1/4" A36 Carbon Steel	Frac, Containers
119745	Flange 6" Slip-On 150# Carbon Steel	Frac, Containers
119746	Flange 6" Threaded 150# Carbon Steel	Frac, Containers





PIPE VALVE & FITTINGS (continued)

ITEM #	SALES DESCRIPTION	IDEAL USAGE
119747	Flange 6" Weld Neck 150# Carbon Steel	Frac, Containers
319230	Flange 8" Blind 1/4" A36 Carbon Steel	Frac, Containers
119748	Flange 8" Slip-on 150# Carbon Steel	Frac, Containers
119749	Flange 8" Threaded 150# Carbon Steel	Frac, Containers
119750	Flange 8" Weld Neck 150# Carbon Steel	Frac, Containers
119752	Hammer Union 6"	Frac
119753	Hammer Union 8"	Frac
119717	Merchant Coupling 4" Carbon Steel	Frac, Containers
119766	Nipple 3" x 24" Threaded Both Ends Schedule 40 Carbon Steel	Frac, Containers
119767	Nipple 4" x 14" Threaded Both Ends Schedule 40 Carbon Steel	Frac, Containers
119769	Nipple 6" x 12" Threaded Both Ends Schedule 40 Carbon Steel	Frac, Containers
119774	Plug 3" Threaded Bar 150# Carbon Steel	Frac, Containers
119776	Plug 4" Threaded Bar 150# Carbon Steel	Frac, Containers
119777	Plug 6" Threaded Bar 150# Carbon Steel	Frac, Containers





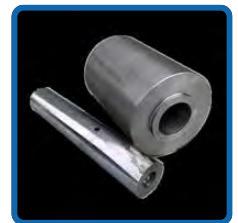
POLY & PVC COMPONENTS

ITEM #	SALES DESCRIPTION	IDEAL USAGE
119395	Bolt 1/2" PE	Poly
120019	Bulkhead Fitting 2" SxT PVC/EPDM	Poly
119883	Bulkhead Fitting 3" SxT PVC/EPDM	Poly
119786	Butterfly Valve 4" CPVC - Viton	Poly
119785	Butterfly Valve 4" PVC - EPDM	Poly
119787	Butterfly Valve 4" PVC with T-Handle	Poly
119881	Donker Bolt Assembly 1/2" x 3" Green PE Head with PE Washers, SS Split Washer, SS Nuts	Poly
119789	Flange 4" Threaded PVC	Poly
119790	Flange 4" Threaded SS Reinforced PVC	Poly
119391	Manway 10" Threaded Mushroom Lid Black PE	Poly
119393	Manway Combo Lid 24" Black PE with 10" Threads (No 10" Lid)	Poly
419015	Poly Tank Ground Roller Bracket	Poly
419013	Poly Tank Long Sill Tube 6" x 2" x 1/4" x 240" Long, Cut 45° One End - Not Painted	Poly
119213	PV Valve Flange Adapter, ANSI to API, Powder Coated Yellow.	Poly
119396	Split Back-up Ring 4" Tapered SS 316	Poly
119397	Washer - 5/8" PE Square Bevel	Poly
119872	Washer 5/8" Round PE	Poly
119389	Wingnut 1/2" 316 SS	Poly
119782	Vent PVC Mushroom	Poly



ROLLERS & WHEELS

ITEM #	SALES DESCRIPTION	IDEAL USAGE
119346	Ground Roller 10.75" Diameter x 8" Length with Greasable Axle	Containers
119347	Ground Roller 8.625" Diameter x 8" Length with Greasable Axle	Containers
119373	Nose Roller 4x6 with Axle	Containers
119426	V-Groove Roller 3" with Axle Bolt	Containers





STICKERS

ITEM #	SALES DESCRIPTION	IDEAL USAGE
919206	Sticker - 150 bbl Poly Roll-off - Strapping Chart	Poly
919251	Sticker - 170 bbl Mini Tank 2 Mixer - Strapping Chart	Frac
919250	Sticker - 170 bbl Mini Tank Double Wall - Strapping Chart	Frac
919205	Sticker - 200 bbl Mini Tank - Strapping Chart	Frac
919252	Sticker - 240 bbl Mini Tank - Strapping Chart	Frac
919255	Sticker - 300 bbl Poly Frac Tank - Strapping Chart	Poly
919253	Sticker - 420 bbl 4 Mixer Tank - Strapping Chart	Frac
919202	Sticker - 420 bbl Double Wall Frac Tank - Strapping Chart	Frac
919203	Sticker - 420 bbl Recessed Walkway Open Top, Weir, Gas Buster - Strapping Chart	Frac
919200	Sticker - 500 bbl Flat Top Round Bottom Double Wall - Strapping Chart	Frac
919187	Sticker - 500 bbl Flat Top, Open Top, Duel Entry Platform - Strapping Chart	Frac
919254	Sticker - 500 bbl Front Stair Recessed Walkway Frac Tank, Open Top Weir - Strapping Chart	Frac
919201	Sticker - 500 bbl Recessed Side Stair Frac Tank - Strapping Chart	Frac
919204	Sticker - 500 bbl Round Bottom Frac Tank - Strapping Chart	Frac
919237	Sticker - Binder Closing Procedure for Vac Box	Containers
919240	Sticker - Caution Do not play in, on, around or occupy this equipment - English and Spanish	Containers
919245	Sticker - Caution This container must be used with a hoist equipped with proper front stops and rear hold downs. The container specifications must match hoist specifications. (i.e. roller size and location, proper style, hook-up, spacing between long sill, etc.) Container and hoist must be in good working order. Non-compliance could result in damage to equipment and/or injury to persons and is the operators/owner's responsibility - English and Spanish	Containers
919242	Sticker - Empty	Frac
919243	Sticker - Full	Frac
919244	Sticker - Grease Here	Containers
919246	Sticker - Not A Step	Poly
919248	Sticker - Pinnacle Manufacturing	Frac, Poly, Containers





ITEM #	SALES DESCRIPTION	IDEAL USAGE
919260	Sticker - Roll-off Sludge Container - Strapping Chart	Containers
919261	Sticker - Roll-off Vacuum Container - Strapping Chart	Containers
919238	Sticker - Stop Danger Stop, Do Not Enter, Confined Space, Entry By Certification Only - English and Spanish	Containers
919239	Sticker - Warning Do Not Move Unless Completely Empty - Poly	Poly
919247	Sticker - Warning Due to the volume capacity of some containers, it is possible to overload the equipment if a heavy material is hauled. the operator must take precautions to avoid overloading problems by: 1) Knowing the weight characteristics of the material hauled. 2) Limiting the quantity of heavy materials loaded. 3) Distributing the load properly to avoid axle overloading. AN OVERLOADED VEHICLE IS ILLEGAL TO TRANSPORT AND COULD RESULT IN DAMAGE TO EQUIPMENT AND/OR INJURY TO PERSONS - English and Spanish	Containers
919249	Sticker - Warning Stand clear when tailgate or container is in motion and during loading and unloading - English and Spanish	Containers

TARP COMPONENTS

ITEM #	SALES DESCRIPTION	IDEAL USAGE
119416	Tarp Bow One Side Adjustable Set of 5	Containers
119418	Tarp Bungee Strap 15" 50/Kit	Containers
119425	Tarp Crank Handle U-Joint	Containers
119874	Tarp Kit - Fixed Pipe 3 Piece Connectable Reduces Freight Cost	Containers
119875	Tarp Kit - Roll Pipe 3 Piece Connectable Reduces Freight Cost	Containers
119443	Tarp Kit 1-18 oz. Tarp w/ Cutouts 1-Roll-Pipe 5-Bows 10-Bow Holders 3-2" Ratchets 1-Fixed Pipe 3-Tarp Stops 10-Bungee Straps 1-Crank Handle 3-Clamps 9-Tek Screws 3-2" x 5' Tarp Straps	Containers
119420	Tarp Ratchet 2"	Containers
119422	Tarp Stops with Safety Cap	Containers
119423	Tarp Strap 2"W x 5'L	Containers
119424	Tarp Vinyl Rollover with Ratchet Cut Out 10.5'W x 25'L 18oz	Containers

