



SPIDER CRANE

# MC285C-3

Crane Capacity  
**2.82t × 1.4m**

Max. working radius  
**8.205m × 0.15t**

Max Lifting Height  
**8.7m**

**NEW**



- Slim Body Width : 750mm
- Slew Angle Limit Setting
- Multi Outrigger Positions
- Multi Outrigger Lifting Mode
- Crane/Outrigger Interlock System
- Digital Feedback Remote Control
- 4 Fall/2 Fall Hook Block
- EU Stage V Compliant Engine



Paddle Lever  
Radio Remote Control



Programmable  
Moment Limiter



Detachable Electric Motor  
(Option)



Auxiliary Winch (Option)

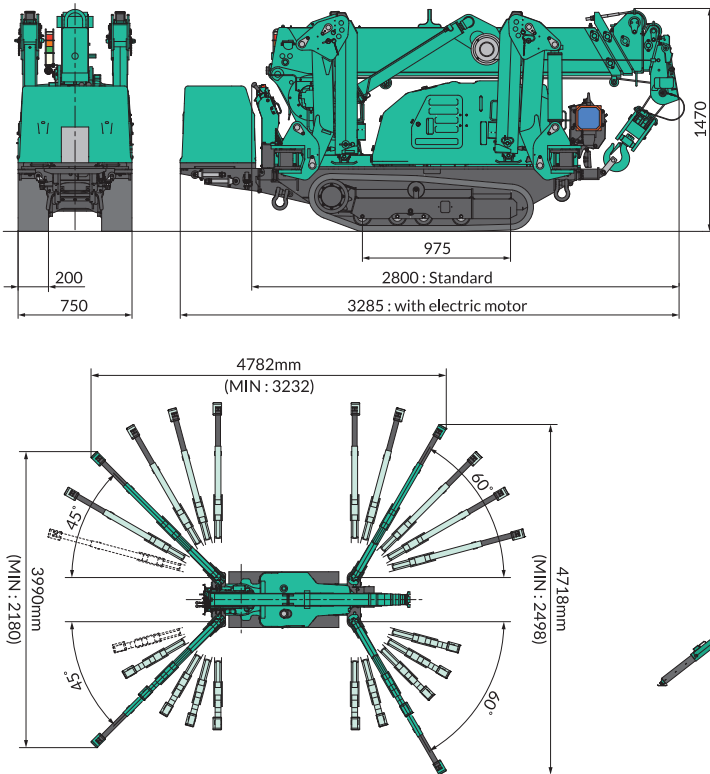


Searcher Hook (Option)

# Specifications

| Model   |  | MC285C-3  |
|---|--|---|
| Crane capacity  |  | 2.82t x 1.4m  |
| Max. working radius                                       |  | 8.205m x 0.15t  |
| Max.lifting height (on the ground)                        |  | 8.7m  |
| Max.lifting height (underground)                          |  | -10.1m (4 falls)  |
| Max.lifting height (underground)/optional auxiliary winch |  | -100m (single fall)   |
| Winch system  | Hook speed   | 9.3m/min (4 layers, 4 falls)  |
|   | Hoist wire rope  | IWRC 6 X Fi (29) 0/0, $\phi$ 7x48.0m  |
| Telescoping system  | Type   | Fully automatic 5-section pentagonal telescopic boom (3 to 5 section : simultaneous telescoping)    |
|   | Boom length  | 2.535m - 8.575m   |
|   | Boom telescoping stroke / time   | 6.04m / 22sec   |
| Boom hoist system   | Hoist angle / time   | 0 to 80deg / 14.0sec  |
| Slew system   | Slew angle / time  | 360deg / 0.88rpm  |
| Outrigger system  | Type   | 1st stage with flexible stay damper, 2nd stage manual pullout hydraulic cylinder direct acting type |
|   | Max.extended width (between outside of OR adapters)  | (Lateral) 4,782mm x (Front) 4,718mm x (Rear) 3,990mm  |
| Travel system   | Type   | Hydraulic motor driven , stepless speed changer   |
|   | Travel speed   | 0 - 2.2km/h   |
|   | Gradability  | 20deg   |
|   | Crawler ground length x width  | 975mm x 200mm   |
|   | Ground pressure (MC285CWM-3)   | 50.0kpa (0.510kg/cm <sup>2</sup> )  |
| Engine(diesel)  | Ground pressure (MC285CWM-3)   | 54.3kpa (0.554kg/cm <sup>2</sup> )  |
|   | Model  | YANMAR 2TNV70-NMBA  |
|   | Displacement   | 569cc (0.569L)  |
|   | Rated output   | 7.4kw (10.1PS) / 2,500rpm   |
|   | Starting method  | Electric starting   |
|   | Fuel / Fuel tank capacity  | Diesel / 12.0L  |
| Motor (MC285CWM-3)  | Motor model  | IKKH-FBK8G-4P-5.5kw   |
|   | Motor type   | Totally enclosed fan-cooled motor 5.5kw, 4P 380V  |
|   | Starting system  | Inverter system (30Hz-60Hz)   |
| Remote control system                                     | Type   | Radio & paddle type control   |
| Overall length x width x height (MC285CWM-3)              |  | 2,800mm x 750mm x 1,470mm   |
| Overall length x width x height (MC285CWM-3)              |  | 3,285mm x 750mm x 1,470mm (Detachable E-motor)  |
| Machine weight (MC285CWM-3)                               |  | 1,990kg (2,160kg with Aux winch)  |
| Machine weight (MC285CWM-3)                               |  | 2,160kg (2,330kg with Aux winch)  |
| Safety device   | Overwind protection, Angle indicator, Hydraulic safety valve, Wire rope latch, Level, Machine body inclination alarm, EMO switch, Moment limiter, Working status lamp, Data logger, Crane & Outrigger interlock device |   |
| Options   | White rubber tracks, Single fall hook, 850kg searcher hook, 900kg auxiliary winch  |   |

# Dimensions



# SPIDER CRANE MC285C-3

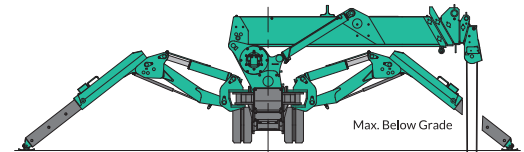
## Rated Total Load Chart (4falls)

| Outrigger extended to maximum |                      |                   |                      |                   |                      |                   |                      |
|-------------------------------|----------------------|-------------------|----------------------|-------------------|----------------------|-------------------|----------------------|
| 2.535m / 4.075m Boom          |                      | 5.575m Boom       |                      | 7.075m Boom       |                      | 8.575m Boom       |                      |
| Working radius(m)             | Rated total load(kg) | Working radius(m) | Rated total load(kg) | Working radius(m) | Rated total load(kg) | Working radius(m) | Rated total load(kg) |
| 1.4 or less                   | 2820                 | 3.0 or less       | 1220                 | 3.6 or less       | 820                  | 4.0 or less       | 550                  |
| 1.5                           | 2520                 | 3.5               | 970                  | 4.0               | 740                  | 4.5               | 400                  |
| 2.0                           | 1920                 | 4.0               | 780                  | 4.5               | 580                  | 5.0               | 340                  |
| 2.5                           | 1570                 | 4.5               | 630                  | 5.0               | 480                  | 5.5               | 300                  |
| 3.0                           | 1220                 | 5.0               | 530                  | 5.5               | 430                  | 6.0               | 270                  |
| 3.5                           | 970                  | 5.205             | 530                  | 6.0               | 380                  | 6.5               | 230                  |
| 3.705                         | 920                  |                   |                      | 6.5               | 350                  | 7.0               | 200                  |
|                               |                      |                   |                      | 6.705             | 330                  | 7.5               | 180                  |
|                               |                      |                   |                      |                   |                      | 8.0               | 150                  |
|                               |                      |                   |                      |                   |                      | 8.205             | 150                  |

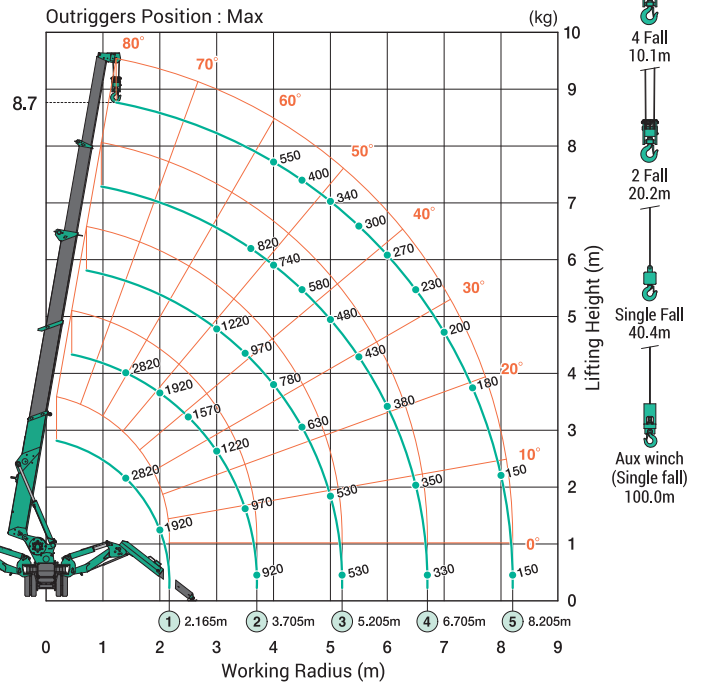
| Outrigger extended to other than maximum |                      |                   |                      |                   |                      |                   |                      |
|--|----------------------|-------------------|----------------------|-------------------|----------------------|-------------------|----------------------|
| 2.535m / 4.075m Boom                     |                      | 5.575m Boom       |                      | 7.075m Boom       |                      | 8.575m Boom       |                      |
| Working radius(m)                        | Rated total load(kg) | Working radius(m) | Rated total load(kg) | Working radius(m) | Rated total load(kg) | Working radius(m) | Rated total load(kg) |
| 1.5 or less                              | 1720                 | 3.0 or less       | 510                  | 3.6 or less       | 400                  | 4.0 or less       | 330                  |
| 2.0                                      | 1070                 | 3.5               | 410                  | 4.0               | 330                  | 4.5               | 280                  |
| 2.5                                      | 630                  | 4.0               | 330                  | 4.5               | 280                  | 5.0               | 230                  |
| 3.0                                      | 520                  | 4.5               | 280                  | 5.0               | 230                  | 5.5               | 180                  |
| 3.5                                      | 390                  | 5.0               | 200                  | 5.5               | 180                  | 6.0               | 160                  |
| 3.705                                    | 350                  | 5.205             | 200                  | 6.0               | 160                  | 6.5               | 130                  |
|  |                      |                   |                      | 6.5               | 130                  | 7.0               | 100                  |
|  |                      |                   |                      | 6.705             | 120                  | 7.5               | 80                   |
|  |                      |                   |                      |                   |                      | 8.0               | 70                   |
|  |                      |                   |                      |                   |                      | 8.205             | 60                   |

\* The Rated Total Load Chart is based on actual working radius including boom deflection.  
 \* The weight of hook block (standard 4 fall / 2 fall-30kg) must be included as part of the load shown in the Rated Total Load Chart.  
 \* When using two falls hook or single fall hook, use the appropriate four falls Rated Total Load Chart shown above but with a maximum load of -1410kg for two falls and -710kg for single fall.

## MAX. Reach Below Ground



## Working Range Chart (4falls)



\* Due to improvements, the specifications are subject to change without notice.

**⚠ Before use, please read the Operation Manual**



# MAEDA SEISAKUSHO CO.,LTD.

Head office

No.1095, Onbegawa, Shinonoi, Nagano-City, Nagano-Pref. 388-8522 Japan  
 TEL:+81(0)26 292 2228 FAX:+81(0)26 293 8499  
 URL : [www.maedaminicranes.com](http://www.maedaminicranes.com) E-mail : [contact@maeda-minicranes.com](mailto:contact@maeda-minicranes.com)