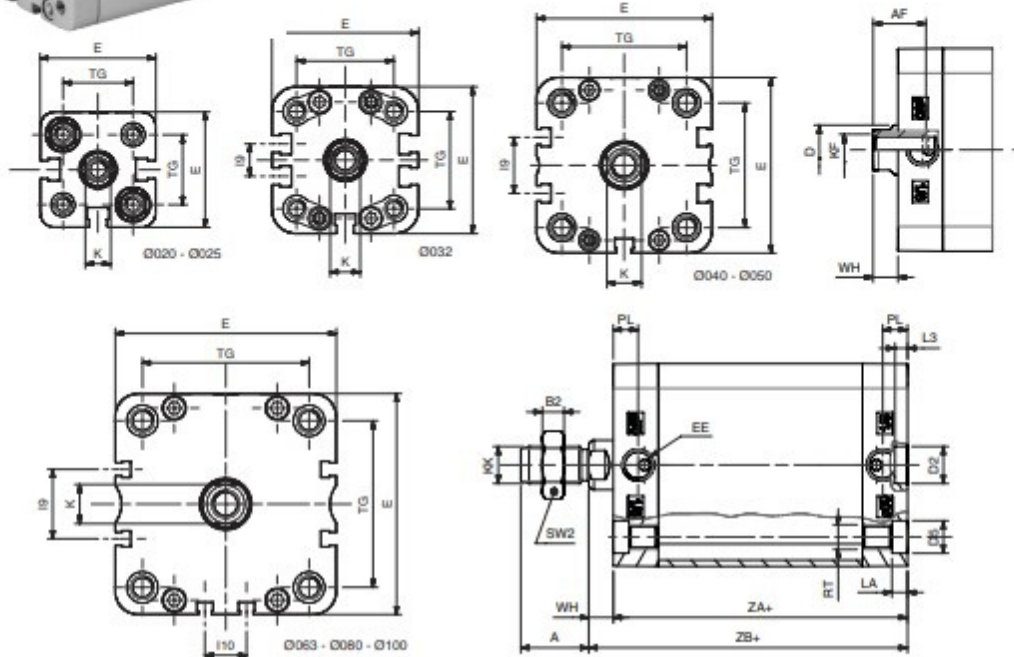


ISO 21287 kompakt henger - belső menettel

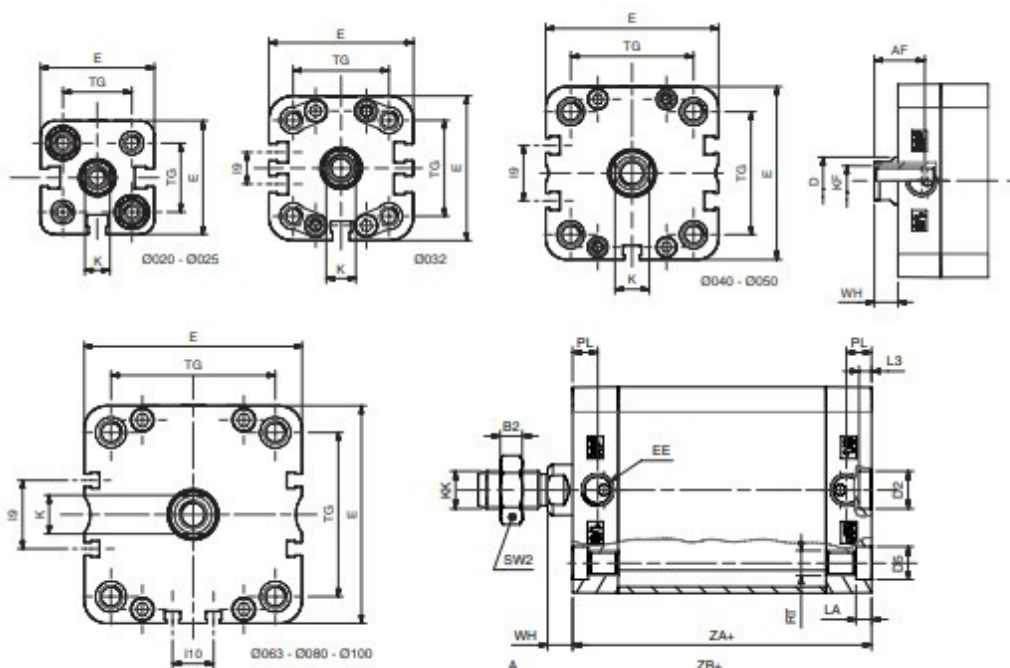


Ø [mm]	A	AF	B2	Ø D	Ø D2	Ø D5	E	EE	I9	I10	K
Ø20	16	15	5	10	9	7,5	36	M5	-	-	8
Ø25	16	15	5	10	9	7,5	40	M5	-	-	8
Ø32	19	15	6	12	9	9	49	G1/8	10,8	-	10
Ø40	19	15	6	12	9	9	54,5	G1/8	12,8	-	10
Ø50	22	17	7	16	12	10,5	65,5	G1/8	21	-	13
Ø63	22	17	7	16	12	10,5	77	G1/8	25,8	13	13
Ø80	28	20	8	20	12	13,5	95,5	G1/8	30	18	17
Ø100	28	22	8	25	12	13,5	113,5	G1/8	50	35	22

Ø [mm]	KF	KK	LA	L3	PL	RT	SW2	TG	WH	ZA+löklet	ZB+löklet
Ø20	M6	M8	4,5	3	7,5	M5	13	22	6,5	37	43,5
Ø25	M6	M8	4,5	3	7,5	M5	13	26	6	39	45
Ø32	M8	M10x1,25	5	3	7,5	M6	17	32,5	6,5	44	50,5
Ø40	M8	M10x1,25	5	3	8	M6	17	38	7	45	52
Ø50	M10	M12x1,25	5	4	8	M8	19	46,5	8	45	53
Ø63	M10	M12x1,25	5	4	7,5	M8	19	56,5	8	49	57
Ø80	M12	M16x1,5	3	4	8	M10	24	72	9	54	63
Ø100	M12	M16x1,5	3	4	10,5	M10	24	89	10	67	77



ISO 21287 kompakt henger - külső menettel

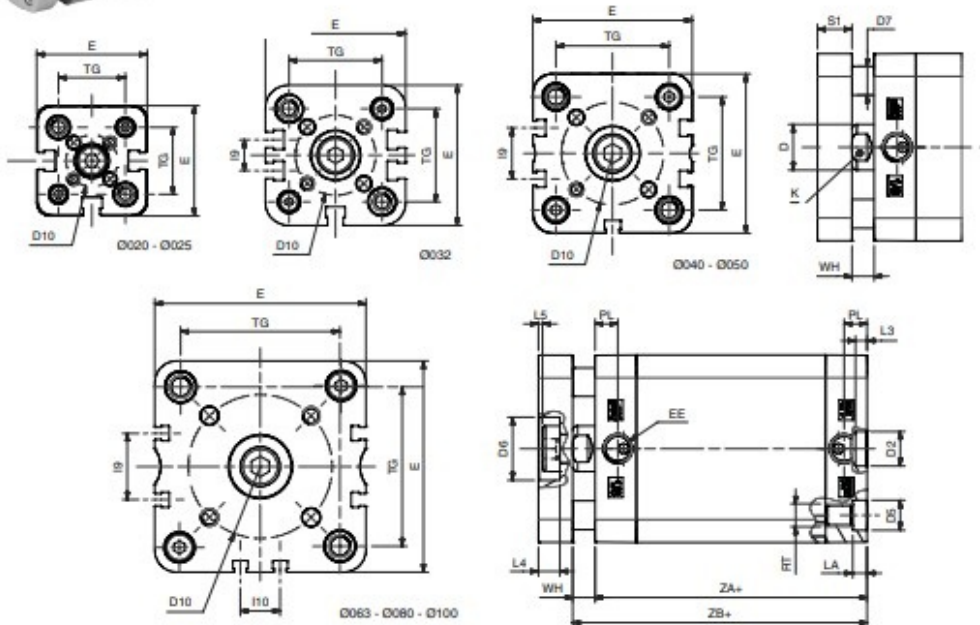


Ø [mm]	A	AF	B2	Ø D	Ø D2	Ø D5	E	EE	I9	I10	K
Ø20	16	15	5	10	9	7,5	36	M5	-	-	8
Ø25	16	15	5	10	9	7,5	40	M5	-	-	8
Ø32	19	15	6	12	9	9	49	G1/8	10,8	-	10
Ø40	19	15	6	12	9	9	54,5	G1/8	12,8	-	10
Ø50	22	17	7	16	12	10,5	65,5	G1/8	21	-	13
Ø63	22	17	7	16	12	10,5	77	G1/8	25,8	13	13
Ø80	28	20	8	20	12	13,5	95,5	G1/8	30	18	17
Ø100	28	22	8	25	12	13,5	113,5	G1/8	50	35	22

Ø [mm]	KF	KK	LA	L3	PL	RT	SW2	TG	WH	ZA+löklet	ZB+löklet
Ø20	M6	M8	4,5	3	7,5	M5	13	22	6,5	37	43,5
Ø25	M6	M8	4,5	3	7,5	M5	13	26	6	39	45
Ø32	M8	M10x1,25	5	3	7,5	M6	17	32,5	6,5	44	50,5
Ø40	M8	M10x1,25	5	3	8	M6	17	38	7	45	52
Ø50	M10	M12x1,25	5	4	8	M8	19	46,5	8	45	53
Ø63	M10	M12x1,25	5	4	7,5	M8	19	56,5	8	49	57
Ø80	M12	M16x1,5	3	4	8	M10	24	72	9	54	63
Ø100	M12	M16x1,5	3	4	10,5	M10	24	89	10	67	77

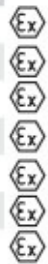


ISO 21287 kompakt henger - megvezetett

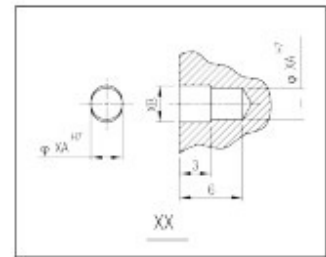
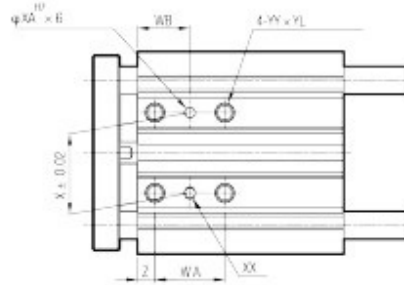


Ø [mm]	Ø D	Ø D2	Ø D5	Ø D6	Ø D7	D8	Ø D9	Ø D10	E	EE	I9	I10
Ø20	10	9	7,5	11	5	M4	4	17	36	M5	-	-
Ø25	10	9	7,5	14	6	M5	5	22	40	M5	-	-
Ø32	12	9	9	17	6	M5	5	28	49	G1/8	10,8	-
Ø40	12	9	9	17	8	M5	5	33	54,5	G1/8	12,8	-
Ø50	16	12	10,5	22	10	M6	6	42	65,5	G1/8	21	-
Ø63	16	12	10,5	22	10	M6	6	50	77	G1/8	25,8	13
Ø80	20	12	13,5	28	14	M8	8	65	95,5	G1/8	30	18

Ø [mm]	K	LA	L3	L4	L5	PL	RT	S1	TG	WH	ZA+löklet	ZB+löklet
Ø20	8	4,5	3	5	1	7,5	M5	8	22	6,5	37	43,5
Ø25	8	4,5	3	5	1	7,5	M5	8	26	6	39	45
Ø32	10	5	3	6,5	1,5	7,5	M6	10	32,5	6,5	44	50,5
Ø40	10	5	3	6,5	1,5	8	M6	10	38	7	45	52
Ø50	13	5	4	7,5	1,5	8	M8	12	46,5	8	45	53
Ø63	13	5	4	7,5	1,5	7,5	M8	12	56,5	8	49	57
Ø80	17	3	4	9	2	8	M10	14	72	9	54	63

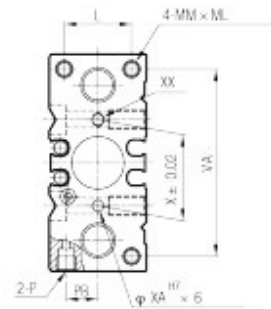
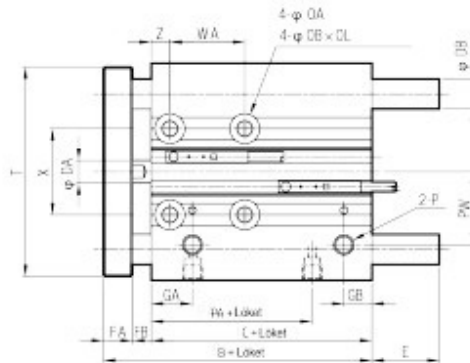
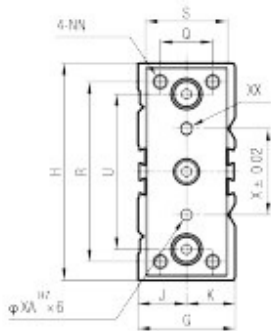


Megvezetett kompakt henger siklócsapágyas



Ø12 - Ø32

Hátsó oldal



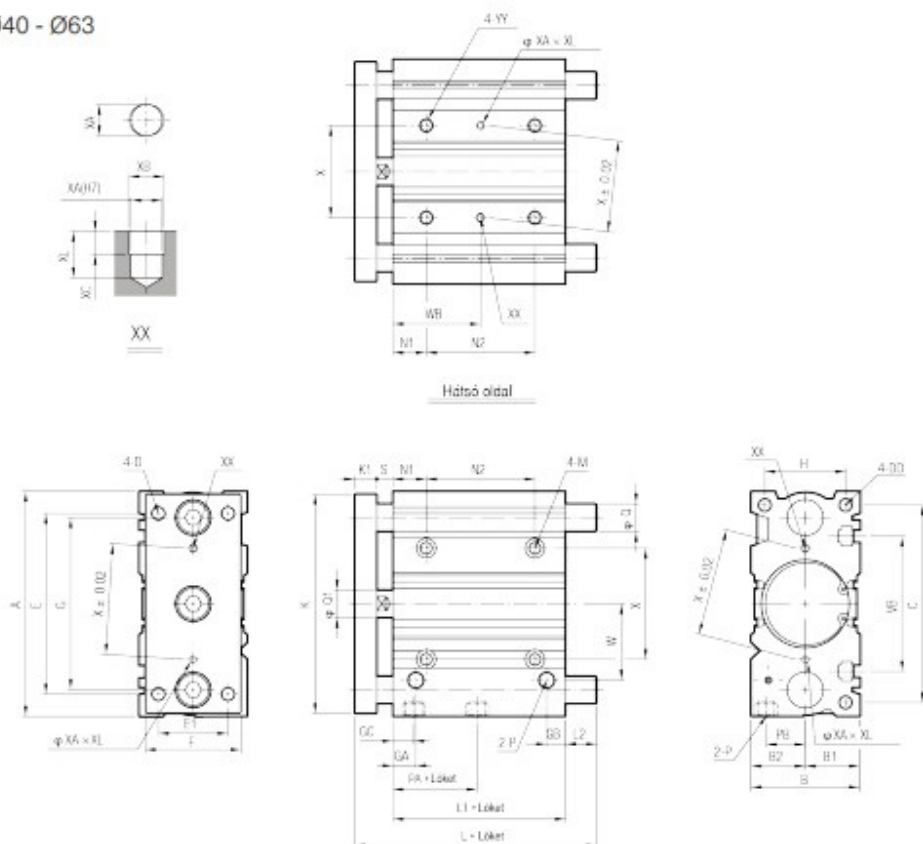
Ø	B	C	DA	DB	FA	FB	G	GA	GB	H	J	K	L	MM	ML	NN	OA	OB	OL	P	PA
Ø12	42	29	6	8	8	5	26	11	15*	58	13	13	18	M4x0,7	10	M4x0,7	4,3	8	4,5	M5x0,8	14
Ø16	46	33	8	10	8	5	30	11	18**	64	15	15	22	M5x0,8	12	M5x0,8	4,3	8	4,5	M5x0,8	15
Ø20	53	37	10	12	10	6	36	10,5	8,5	85	17	19	24	M5x0,8	13	M5x0,8	5,2	9,5	5,5	G1/8	12,5
Ø25	53,5	37,5	12	16	10	6	42	11,5	9	96	21	21	30	M6x1,0	15	M6x1,0	5,2	9,5	5,5	G1/8	12,5
Ø32	59,5	37,5	16	20	12	10	51	12,5	9	116	25	25	34	M8x1,25	20	M8x1,25	6,6	11	7,5	G1/8	7

Ø	PB	PW	Q	R	S	T	U	VA	X	XA	XB	YY	YL	Z	E			
															Ø [mm]	10-50 mm	51-100 mm	100+ mm
Ø12	8,5	18	14	48	22	56	41,5	50	23	3	3,5	M5x0,8	10	5	Ø12	-	18,5	43
Ø16	10	19	16	54	25	62	46	56	24	3	3,5	M5x0,8	10	5	Ø16	-	18,5	49
Ø20	11,5	25	18	70	30	81	55	72	28	3	3,5	M6x1,0	12	17	Ø20	-	31,5	69
Ø25	13,5	28,5	26	78	38	91	65	82	34	4	4,5	M6x1,0	12	17	Ø25	-	31,5	68,5
Ø32	16	34	30	96	44	110	80	98	42	4	4,5	M8x1,25	16	21	Ø32	37,5	52,5	80,5

Ø [mm]	WA					WB				
	~39 mm	40-100 mm	125-200 mm	201-300 mm	301~ mm	20-39 mm	40-100 mm	125-200 mm	201-300 mm	301~ mm
Ø12	20	40	110	200	-	15	25	60	105	-
Ø16	24	44	110	200	-	17	27	60	105	-
Ø20	24	44	120	200	300	29	39	77	117	167
Ø25	24	44	120	200	300	29	39	77	117	167
Ø32	24	48	124	200	300	33	45	83	121	171

Megvezetett kompakt henger siklócsapágyas

Ø40 - Ø63

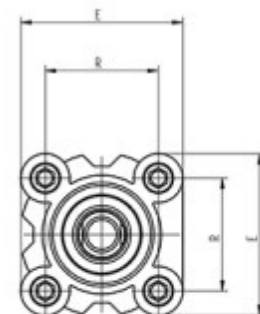
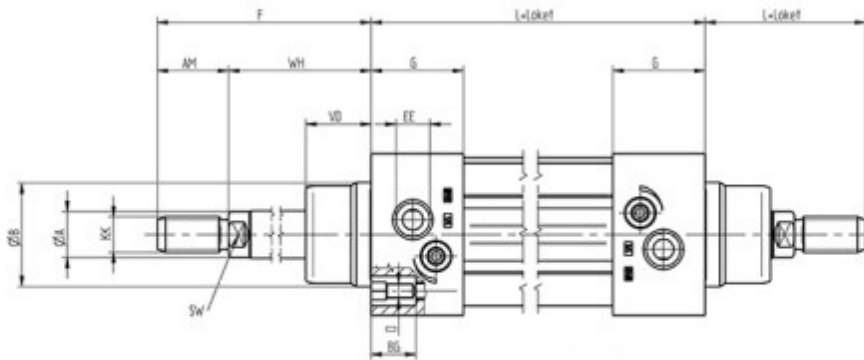
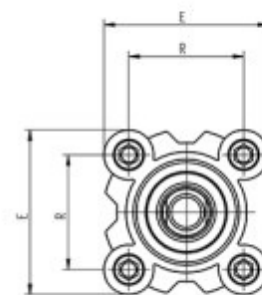
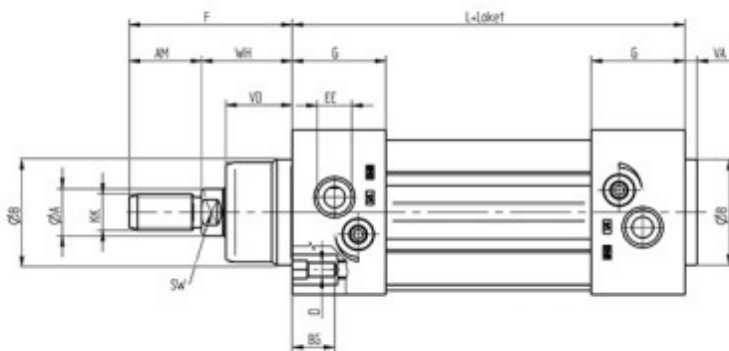
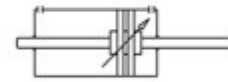
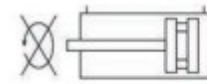
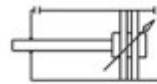


Ø [mm]	A	B	B1	B2	C	D	DD	E	E1	F	G	GA	GB	GC	H	K	K1	L1
Ø40	120	54	27	27	106	M8x1,25	M8x1,25x20	104	30	44	86	14	10	14	40	118	12	44
Ø50	148	64	32	32	130	M10x1,5	M10x1,5x22	130	40	60	110	14	11	12	46	146	16	44
Ø63	162	78	39	39	142	M10x1,5	M10x1,5x22	130	50	70	124	16,5	13,5	16,5	58	158	16	49

Ø [mm]	M	N1	P	PA	PB	Q1	S	VB	W	X	XA	XB	XC	XL	YY
Ø40	Ø6,6-Ø11x7,5	22	G1/8	13	18	16	10	72	38	50	4	4,5	3	6	M8x1,25x16
Ø50	Ø8,6-Ø14,9	24	G1/4	9	21,5	20	12	92	47	66	5	6	4	8	M10x1,5x20
Ø63	Ø8,6-Ø14,9	24	G1/4	14	28	20	12	110	55	80	5	6	4	8	M10x1,5x20

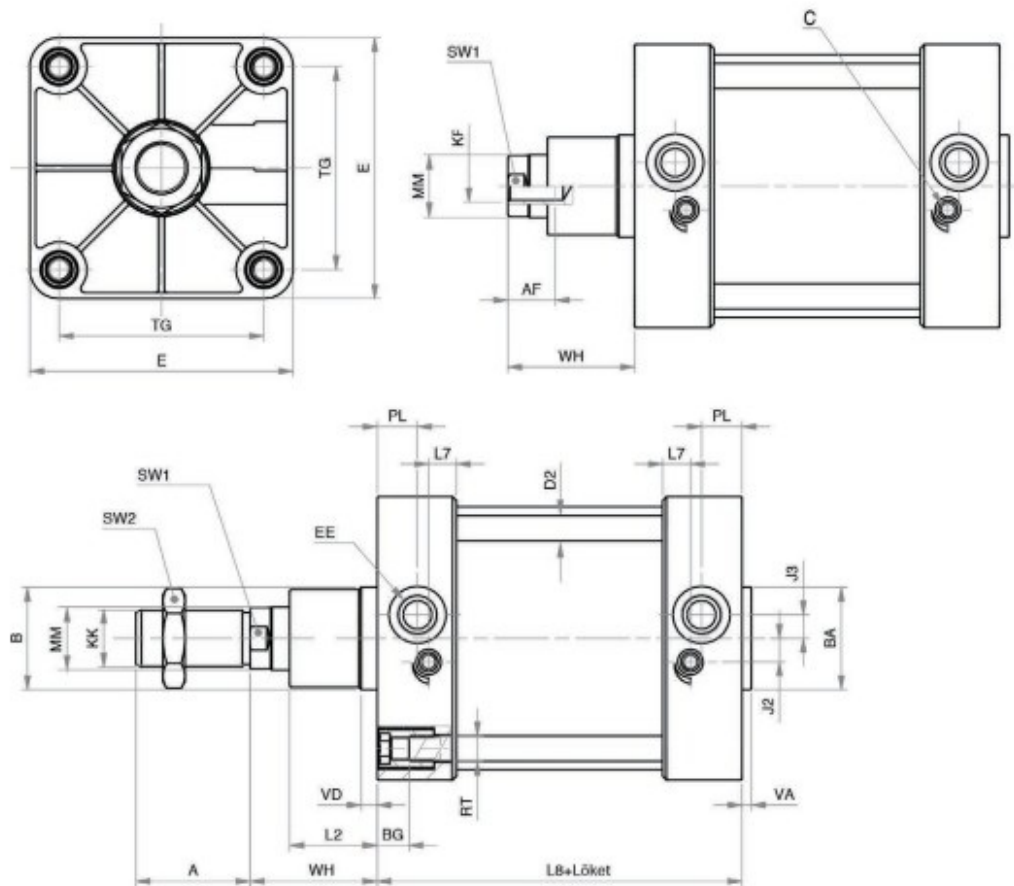
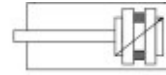
Ø [mm]	N2			WB			L		L2		Q
	25 mm	50-100 mm	100~ mm	25 mm	50-100 mm	100~ mm	25 - 50 mm	50~ mm	25 - 50 mm	50~ mm	
Ø40	24	48	124	34	46	84	97	102	31	36	Ø20
Ø50	24	48	124	36	48	86	106,5	118	34,5	46	Ø25
Ø63	28	52	128	38	50	88	106,5	118	29,5	41	Ø25

ISO 1552 profil henger



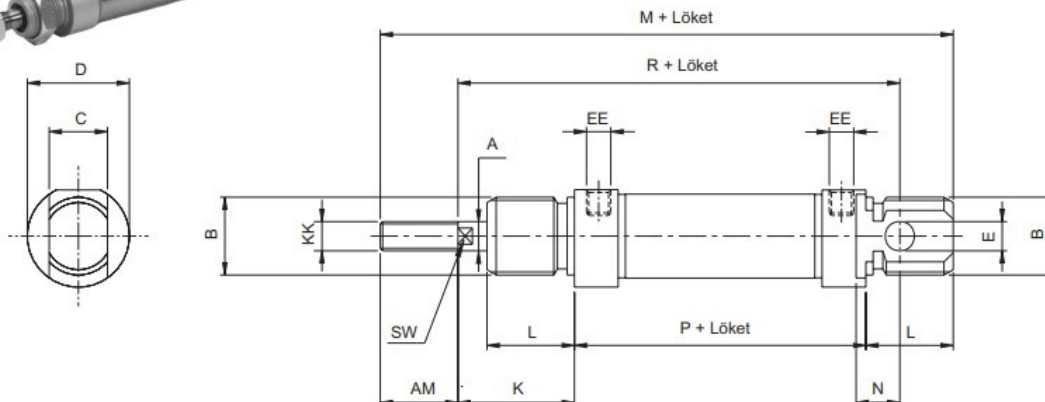
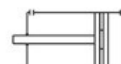
Ø [mm]	A	B	D	E	F	G	L	R	AM	BG	EE	KK	SW	VA	VD	WH
Ø32	12	30	M6	47	48	26,5	94	32,5	22	16	G1/8	M10x1,25	10	4	18	26
Ø40	16	35	M6	54,5	54	31	105	38	24	16	G1/4	M12x1,25	13	4	22	30
Ø50	20	40	M8	65	69	31	106	46,5	32	16	G1/4	M16x1,5	17	4	25,5	37
Ø63	20	45	M8	75	69	33,5	121	56,5	32	16	G3/8	M16x1,5	17	4	26	37
Ø80	25	45	M10	93	86	40	128	72	40	17	G3/8	M20x1,5	22	4	32	46
Ø100	25	55	M10	110	91	40,5	138	89	40	17	G1/2	M20x1,5	22	4	38	51
Ø125	32	60	M12	134	119	47	160	110	54	20	G1/2	M27x2	27	6	46	65

ISO 1552 összehúzócsavaros henger



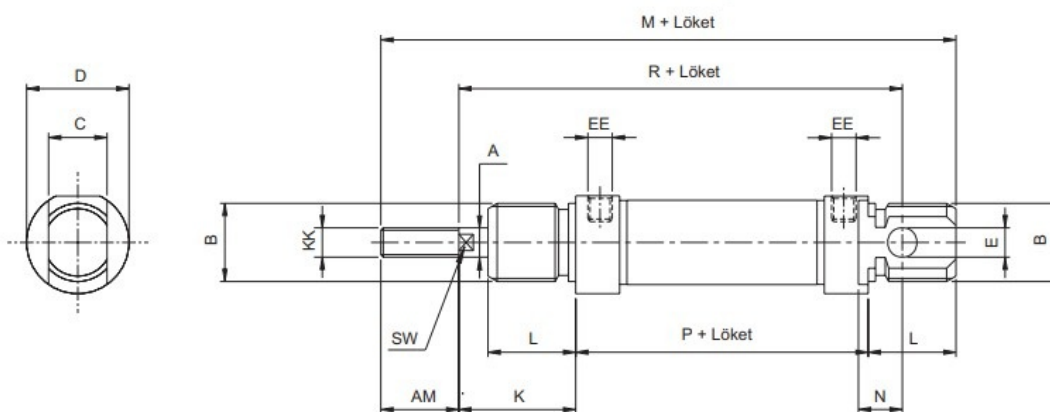
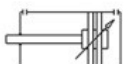
Ø [mm]	A	AF	B	BA	BG	D2	E	EE	J2	J3	KF	KK	L2	L7	L8+	MM	PL	RT	SW1	SW2	TG	VA	VD	WH
Ø160	72	30	65	65	24	16	180	G3/4	15	15	M20	M36x2	55	17,5	180	40	25,5	M16	36	55	140	6	10	80
Ø200	72	30	75	75	24	16	220	G3/4	15	15	M20	M36x2	65	16	180	40	25,5	M16	36	55	175	8	25	95
Ø250	84	40	90	90	25	20	270	G1	25	25	M24	M42x2	75	20	200	50	30	M20	46	65	220	8	25	105
Ø320	96	50	110	110	28	25	350	G1	35	35	M30	M48x2	90	20	220	63	30	M24	55	75	270	10	25	120

Körprofil - ISO 6432 Kettősműködésű Standard



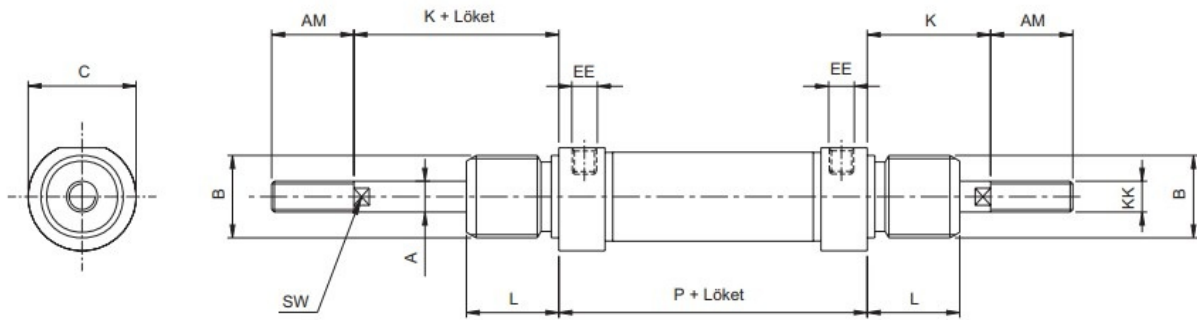
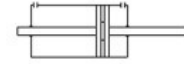
Ø [mm]	A	B	C	D	E	K	L	M	N	P	R	AM	EE	KK	SW
Ø 8	4	M12x1,25	8	16	4	16	12	86	6	46	64	12	M5	M4	-
Ø 10	4	M12x1,25	8	16	4	16	12	86	6	46	64	12	M5	M4	-
Ø 12	6	M16x1,5	12	19	6	22	18	104	9	48	75	16	M5	M6	5
Ø 16	6	M16x1,5	12	19	6	22	18	109	9	53	82	16	M5	M6	5
Ø 20	8	M22x1,5	16	27	8	24	20	131	12	67	95	20	G1/8"	M8	7
Ø 25	10	M22x1,5	16	30	8	28	22	140	12	68	104	22	G1/8"	M10x1,25	9

Körprofil - ISO 6432 kettősműködésű állítható véghelyzetcsillapítás



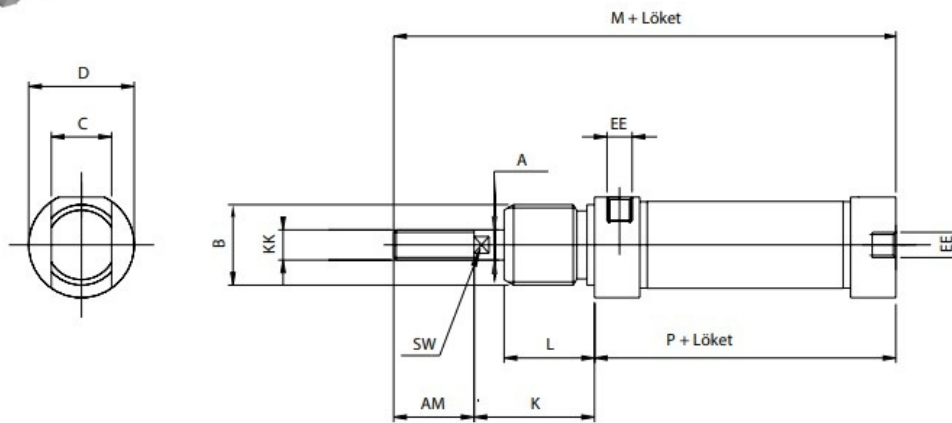
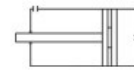
Ø [mm]	A	B	C	D	E	K	L	M	N	P	R	AM	EE	KK	SW
Ø 16	6	M16x1,5	12	21	6	22	18	109	9	53	82	16	M5	M6	25
Ø 20	8	M22x1,5	16	27	8	24	20	131	12	67	95	20	G1/8"	M8	7
Ø 25	10	M22x1,5	16	30	8	28	22	140	12	68	104	22	G1/8"	M10x1,25	9

Körprofil - ISO 6432 kettősműködésű átmenő rúd



Ø [mm]	A	B	C	K	L	P	AM	EE	KK	SW
Ø 16	6	M16x1,5	19	22	18	53	16	M5	M6	5
Ø 20	8	M22x1,5	27	24	20	67	20	G1/8"	M8	7
Ø 25	10	M22x1,5	30	28	22	68	22	G1/8"	M10x1,25	9

Körprofil - ISO 6432 kettősműködésű egyedi hengerfedél



Ø [mm]	A	B	C	D	K	L	M	P	AM	EE	KK	SW
Ø 16	6	M16x1,5	12	21	22	18	91,5	53	16	M5	M6	5
Ø 20	8	M22x1,5	16	27	24	20	111,5	67	20	G1/8"	M8	7
Ø 25	10	M22x1,5	16	30	28	22	118,5	68	22	G1/8"	M10x1,25	9