



**NDIS/SDA  
LIFESTYLE  
HOMES**

 **QLD**

**AVAILABLE  
NOW**



**18 John Street**  
Redbank QLD



## **Brand-New 3-Bedroom**

*High Physical Support SDA Living*

### **Discover contemporary High Physical Support (HPS) SDA living in a quiet cul-de-sac in Redbank.**

This brand-new, low-occupancy property offers a unique 3-bedroom configuration, comprising a 2-bedroom main residence plus a fully self-contained 1-bedroom villa, providing flexibility, privacy and high-level support in a modern setting.

Designed to promote independence while accommodating complex support needs, the home features step-free access, private ensuites and onsite overnight assistance (OOA).

#### **QUICK SNAPSHOT:**

- **Location:** Redbank QLD – Ipswich Region
- **Design Category:** High Physical Support (HPS)

#### **CONFIGURATION:**

- 2 SDA participant bedrooms (each with private ensuite) in the main home + OOA
- 1 fully self-contained 1-bedroom villa (with private ensuite and alfresco area) – suitable for participant not looking to share

#### **HOME HIGHLIGHTS:**

- Three generously sized bedrooms, all with private ensuites
- Self-contained villa offering enhanced privacy and independence
- Dedicated OOA capability with 24/7 support readiness
- Step-free, fully accessible layout throughout
- Accessible kitchen with essential appliances included
- Covered alfresco area and large landscaped backyard
- Double garage with internal access
- Air-conditioning, ceiling fans and built-in wardrobes
- Intercom system, internet-ready connections and emergency backup power
- Purpose-built by experienced SDA specialists



**AVAILABLE NOW**

**18 John Street**  
Redbank QLD

**LOCATION HIGHLIGHTS:**

- Quiet cul-de-sac with minimal traffic
- Approx. 5 minutes to Redbank Plaza (shopping, medical, pharmacy)
- Approx. 3 minutes to Redbank Train Station (Ipswich & Brisbane CBD access)
- Close to Redbank Medical Centre and Ipswich Hospital



**AVAILABLE NOW**

**18 John Street  
Redbank QLD**

**IDEAL FOR:**

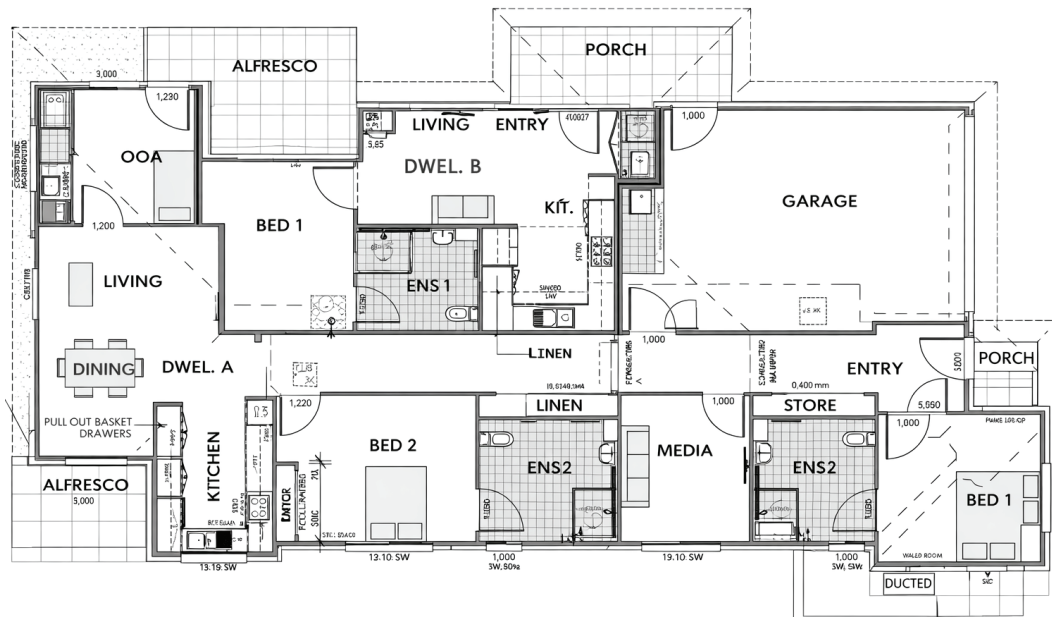
- NDIS participants approved for High Physical Support (HPS)
- Individuals seeking low-occupancy living with private ensuites
- Participants wanting flexibility, privacy and high-quality SDA design
- Those who may benefit from a self-contained living option alongside onsite support



**Vacancies now available**

Enquire today to secure this high-quality 3-bedroom High Physical Support SDA home in Redbank.

**FLOORPLAN**



**CONTACT**

**Min Dixon**  
**DIRECTOR**

Tel: 0406 886 101  
Email: [min@ndis-sda.com](mailto:min@ndis-sda.com)

