



NDIS/SDA
LIFESTYLE
HOMES

QLD

AVAILABLE
NOW



10 Henry Street
Brassall QLD



Brand-New 2-Bedroom Robust SDA Home
with Breakout Room + OOA

Discover a purpose-built Robust SDA home designed to support participants with complex behaviours in a safe, durable and low-occupancy environment.

Located in a quiet residential street in Brassall, this brand-new **2-bedroom home** includes a dedicated **breakout room** and **onsite overnight assistance (OOA)**, supporting stability, privacy and independence.

This home has been thoughtfully designed to balance resilience, comfort and functionality, while meeting Robust SDA design requirements.

CONFIGURATION:

- 2 participant bedrooms
- Breakout / retreat room
- 1 OOA room

HOME HIGHLIGHTS

- Two spacious participant bedrooms with robust finishes
- Dedicated breakout room to support de-escalation and emotional regulation
- Separate OOA room enabling 24/7 onsite support
- Durable, low-maintenance materials throughout
- Step-free, fully accessible layout
- Robust kitchen and fixtures designed for daily use
- Secure and private outdoor area
- Air-conditioning and ceiling fans
- Emergency power backup and safety-focused design features
- Purpose-built by experienced SDA specialists



AVAILABLE NOW

10 Henry Street
Brassall QLD

LOCATION HIGHLIGHTS

- Quiet, established street in Brassall
- Approx. 5 minutes to Brassall Shopping Centre
- Close to public transport, medical services and local amenities
- Easy access to Ipswich CBD and Ipswich Hospital



AVAILABLE NOW

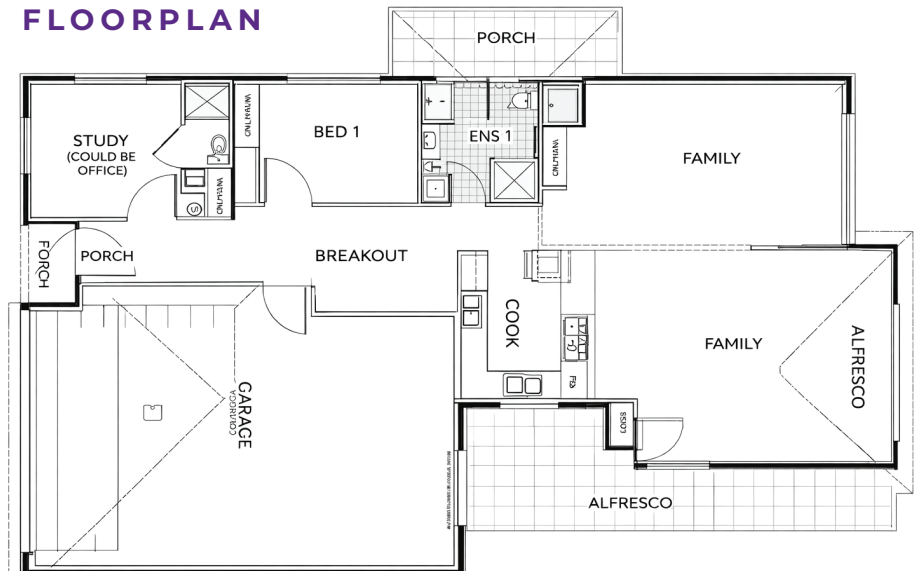
10 Henry Street
Brassall QLD



IDEAL FOR:

- NDIS participants approved for **Robust SDA**
- Individuals who benefit from a low-occupancy, calm living environment
- Participants requiring access to breakout space and structured support
- SIL providers seeking a well-designed, easy-to-support Robust home

FLOORPLAN



Vacancies now available

Enquire today to secure this **brand-new Robust SDA home.**

CONTACT

Min Dixon
DIRECTOR

Tel: 0406 886 101
Email: min@ndis-sda.com

