



NDIS/SDA
LIFESTYLE
HOMES

QLD

AVAILABLE
NOW



Courtney Drive
Upper Coomera QLD



Coming Soon | Brand-New 2-Bedroom
High Physical Support SDA Home in Gold Coast

Courtney Drive, Calli Estate, Upper Coomera QLD 4209 Gold Coast Region

Discover contemporary **High Physical Support (HPS) SDA living** in the sought-after Calli Estate, Upper Coomera. This **brand-new, low-occupancy 2-bedroom home** has been purpose-built to support participants with high physical needs, offering generous internal spaces, private ensuites and **onsite overnight assistance (OOA)** to support safe, independent living.

Designed for both functionality and comfort, this home features multiple living zones and seamless indoor-outdoor flow, ideal for participants who value space, privacy and accessibility.

QUICK SNAPSHOT

Address: Courtney Drive, Calli Estate, Upper Coomera QLD 4209

Region: Gold Coast

Design Category: High Physical Support (HPS)

Configuration:

- 2 participant bedrooms (each with private accessible ensuite)
- 1 OOA room
- Double garage with internal access

HOME HIGHLIGHTS

- Two spacious participant bedrooms with private accessible ensuites
- Dedicated OOA room enabling 24/7 onsite support
- Large, fully accessible kitchen and dining area with quality appliances
- Separate living room providing additional space and flexibility



AVAILABLE NOW

Courtney Drive
Upper Coomera QLD

- Covered alfresco area for indoor-outdoor living and relaxation
- Step-free, fully accessible layout throughout
- Double garage with internal access for added convenience
- Air-conditioning, ceiling fans and built-in wardrobes
- Intercom system, internet-ready connections and emergency backup power
- Purpose-built by experienced SDA specialists

IDEAL FOR:

- NDIS participants approved for **High Physical Support (HPS)**
- Individuals seeking **low-occupancy living** with generous internal space
- Participants wanting modern SDA design with multiple living zones
- SIL providers seeking a high-quality, easy-to-support HPS home

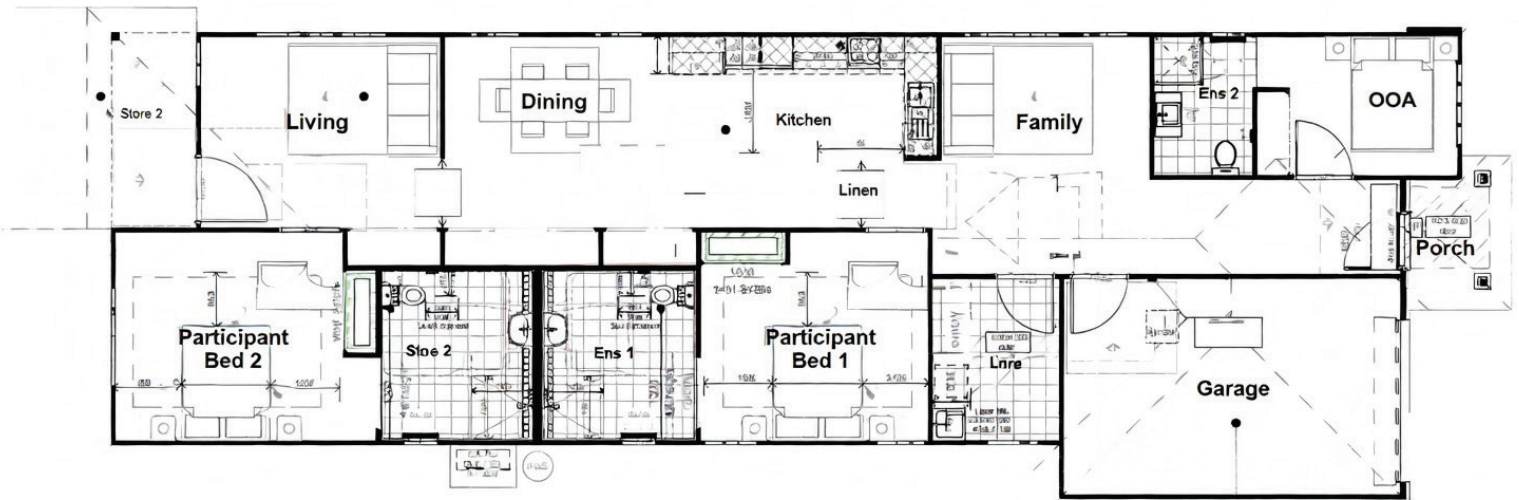
LOCATION HIGHLIGHTS:

- Located within the modern Calli Estate, Upper Coomera
- Close to local shops, medical services and public transport
- Easy access to major road links and community amenities
- Well positioned between Brisbane and the Gold Coast

Vacancies now available

Enquire today to secure this **brand-new High Physical Support SDA home** in Upper Coomera.

FLOORPLAN



CONTACT

Min Dixon

DIRECTOR

Tel: 0406 886 101

Email: min@ndis-sda.com

