



NDIS/SDA
LIFESTYLE
HOMES

QLD

AVAILABLE
NOW



14 Fife Place
Hemmant QLD



Modern 2-Bedroom HPS SDA Home + OOA
Elevated Living in Hemmant, Brisbane

Modern High Physical Support SDA home in Hemmant.

Two bedrooms + OOA, step-free design, open-plan living and private outdoor area with elevated city outlooks — close to Brisbane services and bayside lifestyle.

Purpose-Built High Physical Support Living with City Outlooks

Welcome to a brand-new SDA home offering modern **High Physical Support (HPS)** living in one of Brisbane's most convenient bayside suburbs.

Set in a quiet street with **elevated views across Brisbane**, this thoughtfully designed home provides independence, comfort and accessibility in a low-occupancy environment with onsite support available.

HOME HIGHLIGHTS:

- **Two purpose-built HPS participant bedrooms**, each designed for privacy, comfort and accessible support
- **Dedicated OOA room onsite** providing 24/7 support capacity
- **Step-free layout** with wide hallways, accessible thresholds and functional circulation spaces
- **Modern open-plan kitchen, dining and lounge area** designed for visibility and ease of movement
- **Fully air-conditioned throughout** for comfort in all seasons
- **Secure parking and level entry access** for safe transport and mobility pathways
- **Private outdoor area with elevated suburban and city outlooks**
- **Constructed to meet NDIS SDA HPS standards** with structural provisions for assistive equipment



AVAILABLE NOW

**14 Fife Place,
Hemmant QLD**

LOCATION HIGHLIGHTS – HEMMANT SDA LIVING

Enjoy the balance of suburban calm and city proximity:

- Close to **Brisbane's eastern hospital and health precincts**
- Easy access to **local shops, medical centres, and community services**
- Short drive to **Brisbane CBD, Wynnum waterfront and major transport routes**
- Peaceful residential setting with reserved outlooks and leafy surroundings



AVAILABLE NOW

14 Fife Place,
Hemmant QLD

IDEAL FOR:

- NDIS participants approved for **High Physical Support (HPS)**
- Also suitable for **Fully Accessible (FA), Improved Liveability (IL)** or **Supported Independent Living (SIL)** participants
- People seeking a low-occupancy, supportive home close to metropolitan services
- Participants transitioning from shared accommodation to more personalised living



AVAILABLE NOW

14 Fife Place,
Hemmant QLD

✦ A Home Designed for Confidence, Comfort and Connection

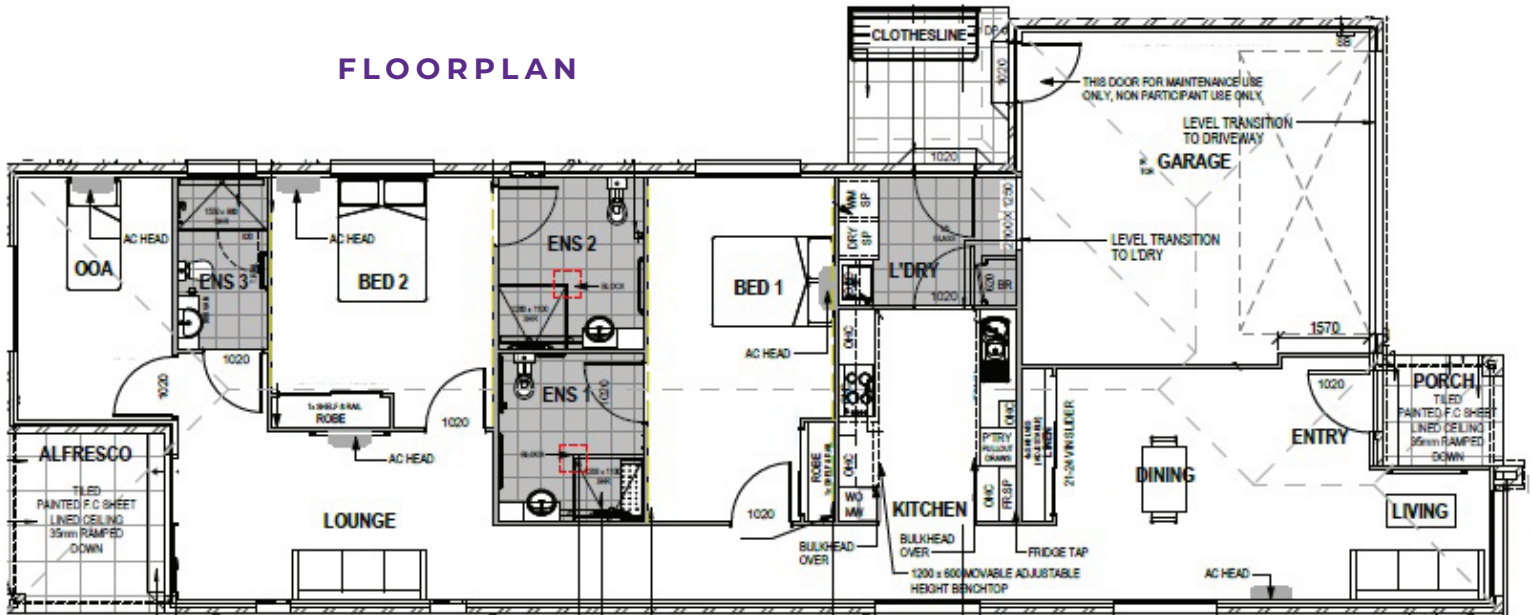
This home brings together contemporary design, practical accessibility and scenic surrounds — offering a supportive environment tailored to individual needs.

Ideal for participants wanting a relaxed lifestyle while staying close to Brisbane’s essential services.



Enquire today to secure your place in this premium Hemmant HPS SDA home.

FLOORPLAN



CONTACT

Min Dixon
DIRECTOR

Tel: 0406 886 101
Email: min@ndis-sda.com

