

Edition 30 - 21st March, 2026



Hi Nick,

Welcome to another bumper edition of The Dean Scene!

Do you have a **neighbour, relative, work colleague or friend** who you think would enjoy the newsletter? If so, please tell them about *The Dean Scene* and encourage them to subscribe - it only takes just a few seconds! Just visit the [Dean Scene website here](#)

As a little thank you, **all new subscribers will receive a free copy of our Smugglers Trail Guide**. And if any of our existing readers would like a copy too, just email Lisa@Deanscene.co.uk and we'll happily send it over.

Today, the **Ovingdean Choral Society** present what promises to be a wonderful concert — **definitely one not to be missed**. See the details below.

And don't forget the brilliant **Deans Repair Café**, running between **10:30am and 12:30pm**. With added offerings of bird box making, computer advice and textile upcycling, as well as the usual household appliance 'clinic' and clothes mending. <https://www.facebook.com/groups/2462842683993570>

A huge **Thank You** to **Deco Dogs** who are holding a raffle to raise funds for **Helping Paws**. Please do pop along and buy some tickets to support this wonderful charity.

In this week's **History Corner**, we bring you the final instalment of **Douglas d'Enno's** fascinating series exploring the history of **Black Rock**, complete with

some truly remarkable photographs. You'll also find a selection of Douglas's published books featured at the bottom of the section.

Looking ahead, **next week's edition will feature lots of Easter events** happening across the Deans. If you'd like your event included, **please contact Lisa now** at lisa@deanscene.co.uk.

Best Wishes,

Lisa Staples

What's Happening In The Deans This Week...

Today at 7.30pm

Ovingdean Choral Society Spring Concert



**Ovingdean Choral Society
Spring Concert**

St Margaret's Church, Rottingdean
Saturday 21 March, 7.30pm

Music with a breath of Spring, celebrating the 80th birthday
of Sir John Rutter

"A Sprig of Thyme" - arrangements of English traditional songs
"For the Beauty of the Earth"
"The Lord is my Shepherd" (Howard Goodall)

Tickets £12 from: Ewart Wooldridge 07584 496190
Dawn Davidson 01273 304349

Advertise in The Dean Scene!



THE DEAN SCENE
Your Business Could Be Here

Turn Local Readers Into Local Clients

✔ Local businesses already seeing results!

- ✔ **1,500+ local subscribers and growing***, soon to be 2,000+ with our new social media push!
- ✔ **Weekly** inbox delivery
- ✔ **Trusted** local newsletter
- ✔ **Proven** results for advertisers

"We've already gained a number of new clients from advertising in The Dean Scene"

Jacqueline Kennedy
Divine Light Holistics

Advertise from just
£20.83 +VAT per week
per week

Advertise in The Dean Scene

DeanScene.co.uk/Business

[Contact Us Here!](#)

Friends of Beacon Hill

27th March

10:00 - 12:00



We are a group of people who value and appreciate our local Beacon Hill Nature Reserve and give a little time and practical help to maintain

and develop it. We carry out tasks agreed by Brighton City Council and Rottingdean Parish Council who are responsible for the nature reserve.

All Work Sessions are 10:00 to 12:00. It's meet at 10:00 at the Beacon Hub on Beacon Hill.

We ask people to bring secateurs if they have them, to wear sturdy footwear and have good gardening gloves. We provide tools for scrub removal

Ovingdean's Got Talent!

Ovingdean Village Hall

28th March



Ovingdean Village Hall is hosting a spectacular community event,

Ovingdean's Got Talent

on **28 March 2026** - a night guaranteed to entertain, inspire, and celebrate the amazing talent in our community!

We've got 10 fantastic acts lined up for your enjoyment!

Music, theatre, dance and comedy; a whole range of eclectic talents from our lovely community.

Anything could happen! And probably will!

Do come along to the Village Hall and show your support. Tickets available in advance from the bar, or on the door on the night.

The Grange Gallery


"Women of Many Worlds" by Sarah Drewek last week

THE GRANGE
ART GALLERY • MUSEUM • TEA GARDEN
The Green, Rottingdean BN2 7HA

**WOMEN
OF MANY
WORLDS**

SARAH DREWEK

Sarah's work is rooted in direct observation, exploring the body as a lived, expressive presence rather than an ideal. She is drawn to natural, unguarded poses and the quiet narratives they hold.




Sarah is a 57-year-old, self-taught figurative artist based in Alfriston. Although she has always enjoyed creating, for the past 12 years her main focus has been oil painting, alongside drawing, with a particular interest in the human form. Living in Alfriston, surrounded by history and landscape, has deepened her awareness of time, character and continuity. Her practice is an act of looking closely and honouring the honesty of the figure.

Wednesday 4 March - Sunday 29 March 2026

RH ROTTINGDEAN HERITAGE
Celebrating & Enhancing the Village

Gallery open:
Wed to Sat 10am - 4pm
Sun 1 - 4pm

Scan here for more information or visit www.rottingdeanheritage.org.uk



Women of Many Worlds is showing until **Sunday 29th March**. We look forward to welcoming you.

The exhibition is on the first floor (above Rottingdean Library) and a chairlift is available.

Gallery opening hours are:
Wednesday to Saturday 10.00am to 4.00pm
Sunday 1.00pm to 4.00pm.
Admission free.

Rottingdean Heritage CIO is a locally run charity. Please do look at the website for information on what Rottingdean Heritage looks after in our beautiful village, and please do sign up if you'd like to receive quarterly newsletters.

Business of the Week

Melissa Jane Beauty

Peacehaven



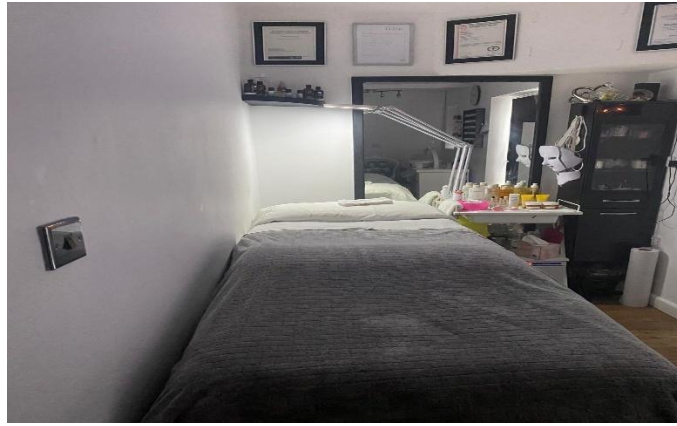
With over **30 years of experience**, Melissa Jane is a highly qualified beauty therapist holding **NVQ Levels 2 and 3 in Beauty Therapy**, as well as being a **Decl or specialist**.

Both **men and women** are welcome to enjoy the wonderfully relaxing treatments on offer. Whether you're preparing for your **wedding day**, getting ready for a **special event**, or simply treating yourself because you deserve it, Melissa offers a range of treatments designed to help you look and feel your best.

Melissa runs a **welcoming salon in Peacehaven**, with the added convenience of **ample parking** for clients.

Contact Melissa today: **01273 587016 / 07887 696088**

**Melissa Jane Beauty, (based at Tann2Go)
211 South Coast Road,
Peacehaven
BN10 8LA**



**Rottingdean Whiteway Centre
Summer Courses**



Summer 2026 course launch

Courses launch from Saturday 14
March @ 9am

In-Person Enrolment 21 March 11-
noon



Term dates

Monday 20 April 2026 -
Friday 3 July 2026
Half term 25-29 May



Can't make our courses during
the day? Try our **NEW** 5 week
Summer evening courses

La Culture de la France - Monday

A 5 week course looking at some aspects of French culture.
(the class is completely conducted in English). Each week
we will look at a different aspect of French culture, ranging
from history, literature, music, art, and of course, food.



WORKOUT

H.I.I.T/Circuits - Tuesday

A fun 45 minute circuit class, moving through a series of
exercise stations, each targeting different muscle groups or
fitness components. All equipment provided

Discussion Group (Zoom) - Wednesday

A lively and friendly online Group covering topics provided
by members, sharing views and perspectives on current
events and trends.



For these (and lots of other courses) sign up at rwc.org.uk

Visit The Website

Brighton Vet Clinic



NEW & INDEPENDENT

Brighton Vet Clinic

Led by **Bronwen Eastwood**

Brighton's New Independent Vet— Built Around Compassion

Modern Medicine. Genuine Compassion.

- ✓ Purpose-built clinic
- ✓ Bespoke hospital kennels
- ✓ First opinion medicine & surgery
- ✓ Risk-assessed health plans

📍 Behind Hollingbury ASDA

☎ 01273 977330

🌐 brightonvetclinic.co.uk

Now welcoming new patients
Come and meet our friendly team.

Contact us Now!

Woodingdean Wilderness Group

Saturday 28th March



Woodingdean Wilderness Group

Monthly volunteer sessions 10 am to 1 pm

Sat 28 Feb

Hazel coppicing – training and practice

Usual meet up

W3words location ///apples.shade.fans

Sat 7 March

Bee bank early spring cut

Meet up at the southern end of lawn cemetery

w3words ///snow.store.penny

Sat 28 March

Wildflower planting at Balsdean triangle

W3words ///signal.pays.shorthand

Meet up at corner between Balsdean and Bexhill road

Usual meet up @ WWG nature site, outside the Lawn memorial park west entrance, Warren road. what3words: <https://w3w.co/apples.shade.fans>

For more info email: info.woodingdeanwilderness@gmail.com

Supported by BHCC city park ranger team: 01273 292929



Woodingdean Carnival

2026



Sponsorship Opportunities!

Would you like to be a 2026 sponsor for
Woodingdean Carnival?
Please get in touch for more details...

[Email Now!](#)

South Coast Taxis

01273 301111



[Book Via Website](#)

The Ovingdean Rock Pool Project

Saturday 28 March

12 Midday start.



A Family-friendly Rockpooling Event in Ovingdean

Explore Ovingdean's rock-pools, discover marine life, meet like-minded people, and contribute to vital citizen science.

The Ovingdean Rock Pool Project is one of only seven new hubs across the country.

Sophie Crocker, volunteer hub leader, said: "There's something magical about discovering the tiny creatures living in our rock pools. These events are a brilliant way to connect with nature, learn something new, and help protect our coastline. I'm so excited to be leading the Ovingdean hub and can't wait to welcome volunteers and participants to build a community of like-minded people to share the experience with."

For more information and to sign up
visit: <https://www.therockpoolproject.co.uk/hubs/ovingdean>

You can also find us on Instagram and Facebook.

**Sign Up
Now!**

The Deans Beach & Environment Volunteers



What better time to get involved in **litterpicking** than during the **#GreatBritishSpringClean** which runs from the **13th-29th March**?

Please try to pick up a bag of litter from your environment - on the beach, on your street, in the countryside - and dispose of it responsibly. Do post a picture of your finds as we love to see them.

It's a great opportunity to make a big difference to our natural environment: what are you waiting for?

Follow Us On Facebook

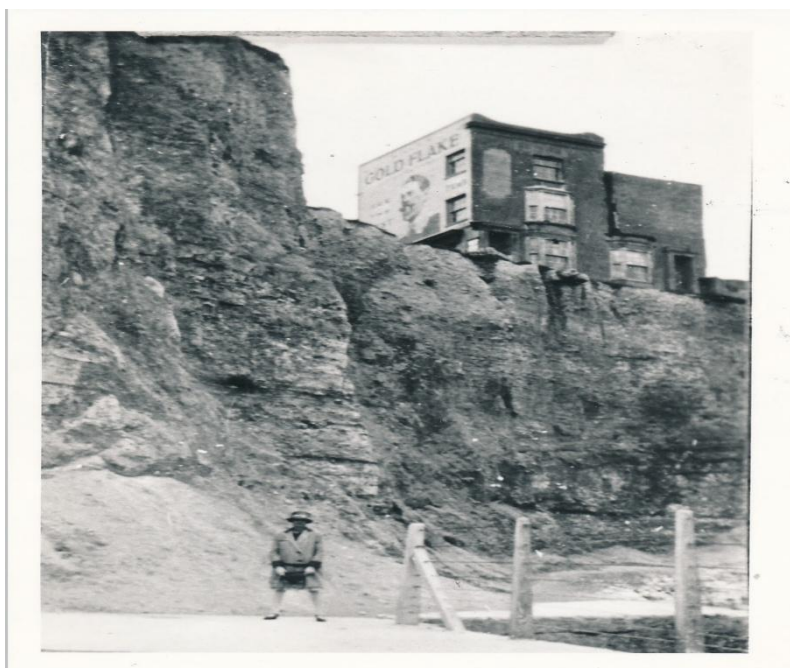


Black Rock (Part 3).... By Douglas d'Enno

BLACK ROCK IN PICTURES

In early 1824, five men were killed at Black Rock by the collapse of part of the cliff face. They were engaged in removing the larger flints embedded in the cliffs for sale to house builders (properties were being built opposite at the time) and smaller ones to road builders working at the top of the cliffs. Five weeks later, on 17 March, another man - who had escaped at that time - met the same fate. Thomas James was around 60 years of age.

Worse still, a boy of about eleven, Thomas Martin, was on 30 April employed with his two brothers and another man in getting stones beneath the cliff a little to the east of the gasworks when a portion of the cliff gave way, killing the lad. One of his brothers escaped, but the other was seriously injured, as was their companion. All the above parties were warned of, and aware of, the danger of the work they engaged in.



The imposing cliff face at Black Rock, with the Creamery perched on the clifftop.

The building was demolished in 1929.



A fine picture of the cliffs and clifftop buildings described in a previous episode.

***Note the wooden groyne and the substantial, although short,
early version of the undercliff walk.***



A charming painting of the area below the cliffs by French artist Jacques-Emile Blanche (1861-1942). Self-taught, he became a successful portrait painter. A long stone seat is available to visitors to Black Rock in this 1920s scene. Above the cliff are Black Rock House, the Abergavenny Arms and the Creamery.



The fragility of the cliffs is apparent in this early postcard, with a section on the left seemingly ready to become detached. On the right are the remains of the Creamery while at far left may be seen the 'Bungalow Station' of Volk's railway, with a train nearby. The station was built in 1911 and demolished in 1936 to make way for Black Rock Swimming Pool. The line of the railway was also shortened in that connection.

Black Rock was an area notorious for its landslips. The worst occurred on 30 January 1891, just west of the Coastguard Station, when some 10,000 tons of chalk crashed onto the beach below. The coast road was blocked off at more than one location and the subsidence - extending for a length of 60 yards - broke through the main of the Brighton Corporation Waterworks via which Rottingdean and Ovingdean were supplied with water. Due to the potential danger, the area had been railed off for two years. Three years later, another landslip occurred some 200 yards east of the major collapse, 250 tons of material being dislodged.



*An interesting view of the early short undercliff walk,
with a wide stretch of cliff face dominating the background.*

Even in this view, the spoil from a landslip can be seen near to where the 'walk' ends.

The fragility of the cliffs has continued to be a problem in modern times, as can be seen below:



On April 2001, more than twenty shoppers and seventy-five members of staff were hurriedly evacuated from the Asda store at the Marina. Rocks and debris crashed into, and disabled, the water tank and an electricity generator. The cliff face was subsequently strengthened.



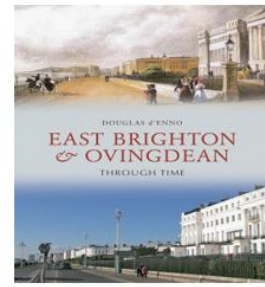
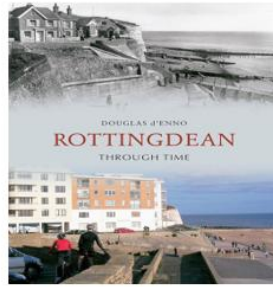
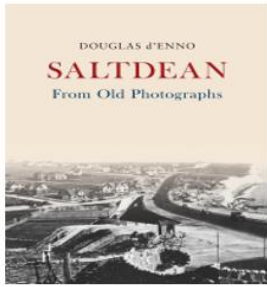
Black Rock's Swimming Pool was constructed in 1936 as an open-air seawater pool at a cost of £52,000. It opened on 31 July of that year. In its early seasons it attracted around 80,000 visitors a year.



When construction of the Marina began in 1971, it brought heavy deposits of dirt, cement dust, and noise, severely impacting visitor experience. Numbers dropped dramatically. Structural issues also emerged, including cracks in the pool and tilting of the facility, leading to its ultimate rundown and closure in 1978. The Pool ceased operations in 1978, with demolition completed in around 1983–1984.

The wasteland left in the Pool's wake largely remains, although planning and work are ongoing to restore and enhance this area of East Brighton.

If you would like to read more of Douglas' fascinating work then you can view his books on Amazon.



[View Douglas d'Enno Books Here](#)

Later This Month In The Deans...

**Open Art Cafe
3rd April
Good Friday
Easter Fayre
10am - 3pm**



Come along to the **Open Art Cafe** on **Good Friday** for our Easter Fayre - we have preloved clothes stalls ,pet stalls and Easter stalls and lots of lovely cakes on offer! And only £5 for a bacon roll and a Tea!

We look forward to seeing you!

**Friday 3rd April
10am - 3pm**

**St Martins Church
Children's Craft Afternoon &
Easter Egg Hunt
Saturday 4th April
2pm - 3.30pm**



**St Martins URC Church
Longridge Avenue
Saltdean
Free Admission!**

**Broadway By The Sea
Saltdean Lido
Saturday April 4th
2pm to 10pm**



It's a musicals and movie takeover and it's happening before sunset.

Join us for a feel-good daytime party packed with the biggest and boldest hits from Broadway and the big screen. From *Mamma Mia!* and *Grease* to *The Greatest Showman*, *Wicked*, *Hairspray*, *Chicago* and more, expect back-to-back show tunes guaranteed to have you singing at the top of your lungs.

Think high-energy anthems, iconic duets, dancefloor favourites and all the guilty pleasures you proudly know every word to. Whether you're a Dancing Queen, hopelessly devoted, defying gravity or rewriting the stars, this is your moment to take centre stage.

Gather your leading cast. Dress for drama. Warm up those vocals.

Sing your heart out on the dance floor, then step outside to enjoy the sunshine on the terraces with a drink in hand — soaking up the sea air before heading back in for the next big chorus.

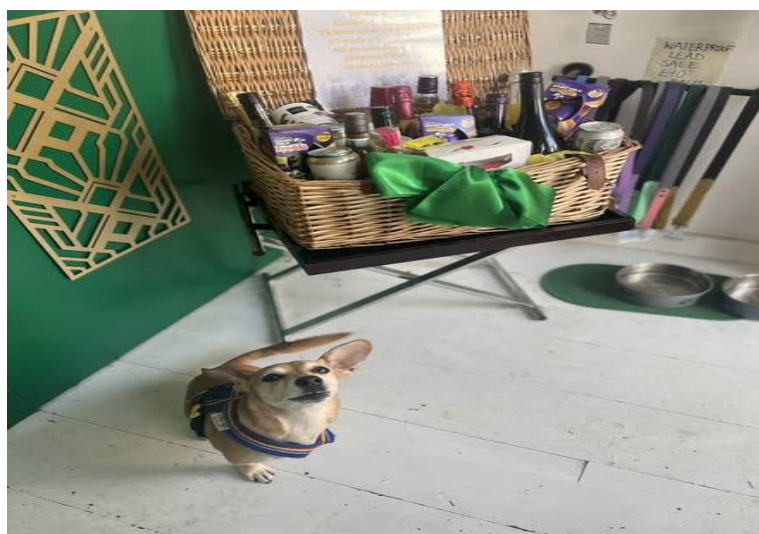
With great drinks, electric atmosphere and a room full of theatre lovers, this is matinee magic turned all the way up.

No curtain calls. No encore needed. Just pure daytime main-character energy from start to finish.

Important: All seats and tables are **unallocated** and available on a **first-come, first-served basis**, so make sure you arrive early to grab your spot on the dance floor!

[Book Now!](#)

Helping Paws Easter Raffle!



Our lovely friends at **Deco Dogs** are holding a fantastic raffle for **Helping Paws**. It is full of amazing things including a bottle of whiskey, a bottle of vodka, loads of wine, beer and chocolate.

Tickets are £5 each and are available from Deco Dogs.

The raffle will be drawn at our pub quiz in **The Plough** on **14th April** and the winner will be notified next day.

Deco Dogs

57 High Street

Rottingdean



The Plough Inn
MONTHLY FUNDRAISING
QUIZ NIGHT

SECOND TUESDAY OF THE MONTH



£20 A TEAM | 8:00 PM START | MAX 6 PER TEAM
HELPING PAWS FUN QUIZ & RAFFLE
PROCEEDS TO ANIMALS IN THE UK & OVERSEAS

PRIZE FOR WINNING TEAM

Book early as this sells out very quickly!

HELPING PAWS
TEL: 07818 402771

Vicarage Lane
Rottingdean
BN2 7HD

Beyond The Blue - Rottingdean Art Club
The Grange Gallery
1st April - 26th April 2026

THE GRANGE
ART GALLERY • MUSEUM • TEA GARDEN
The Green, Rottingdean BN2 7HA



BEYOND THE BLUE
Rottingdean Art Club

The phrase 'Beyond the Blue' aligns distance with colour and mood. It can evoke dreamlike images of water, sky, or far horizons without boundaries. Transcendent and ethereal, it can spark the artist's imagination to explore endless landscapes of time and space. Alternatively it could be interpreted as overcoming feelings of melancholy, often referred to as 'the blues'.

Wednesday 1 April - Sunday 26 April

ROTtingDEAN HERITAGE
Conserving & Enhancing the Village

Gallery open:
Wed to Sat 10am - 4pm
Sun 1 - 4pm

Scan here for more information or visit
www.rottingdeanheritage.org.uk



[Visit The Website](#)

Rottingdean Village Cinema
Saturday 4th April

RALPH FIENNES



TICKETS £6
AVAILABLE FROM:
ROTtingDEAN EMPORIUM & GALLERY, PARK ROAD
DEVESON'S GROCER, 45 HIGH STREET

SATURDAY APRIL 4
ROTtingDEAN VILLAGE HALL
FILM STARTS 7.30pm

WRITTEN BY ALAN BENNETT
ROTtingDEAN VILLAGE CINEMA PRESENTS
THE CHORAL
DIRECTED BY NICHOLAS HYTNER

Tickets available from Deveson's Grocers, High Street or Rottingdean Emporium & Gallery, Park Road.

Helping Paws FUN Dog Show

Sunday 6th September 2026



Stallholders required! Contact Helping Paws to book a place at this fabulous event in September!

[Email Now!](#)

[Privacy Policy](#) | [Terms of Use](#) | [Contact Support](#)

Rockhouse Publishing Limited T/A The Dean Scene

Copyright © 2025. All rights reserved.

