

**Edition 31 - 28th March, 2026**



## **Wishing Our Readers a Joyful Easter**

Hi Nick,

Welcome to another packed edition of **The Dean Scene!**

As March comes to a close we are celebrating **over 300 new subscribers** this month alone - a warm welcome to you all!

**Next week kicks off the "Charity of The Month" - who is your favourite local charity and why? Let us know and we will feature them in the newsletter!**

Over the next few weeks, we'll be shining a spotlight on local clubs in our History Corner. If you'd like your club to be featured, do get in touch!

Today, we turn our attention to **Saltdean Tennis Club**, who are hosting an **Open Day today**. We also have a wonderful story from Rita Mullins, who has been playing at the club for an incredible 68 years!

As we build up to the **Easter holidays** we have lots of fabulous events to promote around the Deans so you can start planning ahead! And its not too late to let us know about your Easter Fayres!

Best Wishes,

Lisa Staples

# What's Happening In The Deans This Week...

## Saltdean Tennis Club

**Open Day - Today!**

**Saturday 28th March**



**Open Day March 28th**

10.30am - 2.30pm

Come meet members of the club for a free 4 hour session of tennis.

Meet our Head Coach Jack Palmer  
Racket Display from Inter Sport Director Richard Harding  
Take on the mighty ball machine and lots more

Adult, Family and Junior memberships are now open.

To know more about the Tennis Club please email us at  
[saltdeantennis@gmail.com](mailto:saltdeantennis@gmail.com)



We are delighted to share details of our Open Day!

Richard Harding @intersport\_of\_lewes will be showcasing new technology with a racquet display so come and try some new makes.

Our coach @jptenniscoaching will be hosting his junior programme and the courts are open for our local community and members until 230pm.

We look forward to seeing you there!

**Saltdean Park  
Multi Use Games Area  
Wednesday 1st April**



**PARC (Play Area in Rottingdean Committee)** is delighted to invite the community to the opening of Saltdean's new **MUGA (Multi-Use Games Area)**, a vibrant new space shaped by and for local young people.

The court will be officially opened at **2pm on Wednesday 1st April** by Cllr Amanda Grimshaw, Mayor of Brighton & Hove. The event will include fun, inclusive sports activities, giving young people the chance to take ownership of the space and celebrate together.

The **MUGA** stands as a lasting legacy to **Councillor Mary Mears**, whose vision, passion and commitment to young people were the inspiration behind the project. It reflects a shared belief in listening to young people and investing in safe, welcoming places where they can be active, connect with friends and feel part of their community.

**PARC** and the **Local Action Team (LAT)** continue to support young people in Saltdean and Rottingdean by raising funds for the local youth club, which runs every Friday from 6.00–7.30pm at Saltdean Lido, with additional activities across the ward during the summer months. The club is delivered by the Trust for Developing Communities and led by a Senior Youth Worker, supported by dedicated volunteers.

Anyone interested in volunteering and helping to amplify young people's voices is warmly encouraged to get in touch.

**Contact Us Now!**

## South Coast Taxis

01273 301111



**SOUTH COAST TAXIS**  
**01273 301111**  
**JUST £60 TO GATWICK**  
**AND £120 TO HEATHROW!**

24/7 TAXI

Gatwick Heathrow

TAXI

NEW OFFICE OPENING IN SALTDEAN SOON!

[Visit Our Website](#)

**"Beyond The Blue"**

**Rottingdean Art Club**

**1st April - 26th April**



**THE GRANGE**  
ART GALLERY • MUSEUM • TEA GARDEN  
The Green, Rottingdean BN2 7HA

**BEYOND THE BLUE**  
*Rottingdean Art Club*

The phrase 'Beyond the Blue' aligns distance with colour and mood. It can evoke dreamlike images of water, sky, or far horizons without boundaries. Transcendent and ethereal, it can spark the artist's imagination to explore endless landscapes of time and space. Alternatively it could be interpreted as overcoming feelings of melancholy, often referred to as 'the blues'.

**Wednesday 1 April - Sunday 26 April**

**ROTTHINGDEAN HERITAGE**  
Conserving & Enhancing the Village

Gallery open:  
Wed to Sat 10am - 4pm  
Sun 1 - 4pm

Scan here for more information or visit  
[www.rottingdeanheritage.org.uk](http://www.rottingdeanheritage.org.uk)

[Visit Website](#)

## Upcoming Easter Events

**The Grange & Rottingdean Library**

**Monday 30th March**

**1.30pm - 3.30pm**



**Save the date and celebrate!**

Bring your little ones to hunt down eggs and celebrate the saving of our wonderful library.

# Rottingdean & Saltdean Lions Club

## Win A Giant Easter Egg from Various Outlets Across The Deans!



### Rottingdean & Saltdean Lions Club



Also serving Woodingdean, Ovingdean and Falmer  
Rottingdean & Saltdean Lions Club Charitable Trust Fund N° 1001889

**WIN A GIANT  
EASTER EGG**



**£1 A GO**

**WATCH OUT FOR THE EGGS IN  
LOCAL PUBS AND OTHER OUTLETS**

LOCATION	PLACE	DRAW TAKES PLACE
Coldean	Coldean Convenience O2 Store	Friday 3rd April – 12.30
Falmer	The Swan, Falmer	Sunday 5th April – 20.00
Moulsecroomb	Bookers, Moulsecroomb	Friday 3rd April - 09.30
Ovingdean	Ovingdean Village Hall	Sunday 5th April – 13.00
Peacehaven	Masons, Jerome Hall	Tues 7th April – 20.00
	Peacehaven Stonehouse Carvery	Sunday 5th April - 15.00
	The Central Club, Peacehaven	Saturday 4th April – 13.00
	The Good Companions	Sunday 5th April – 16.00
Rottingdean	The Plough, Rottingdean	Sunday 5th April – 17.00
	The Coach House, Rottingdean	Sunday 5th April – 16.00
	Duck Inn, The Green, (Quiz night)	Tuesday 31st March - 20.00
Saltdean	The L A Bar, Saltdean	Saturday 4h April – 13.00
	Saltdean Stonehouse Carvery	Sunday 5th April – 16.00
	The Spanish Lady, Longridge Avenue	Sunday 5th April – 19.00
Telscombe	Telscombe Tavern	Sunday 5th April – 16.30
Woodingdean	Java Café, Warren Way	Saturday 4h April – 10.00
	The Honey Bee Café, Warren Road	Saturday 4h April – 10.30

Proceeds in aid of local charities and Lions projects

**Easter Basket Decorating  
Saltdean Lido  
Tuesday 31st March  
10.30am - 12.00pm**



Each child will have the opportunity to decorate and personalise their very own Easter basket using a wide variety of fun and colourful materials. With ribbons, stickers, foam shapes, glitter, tissue paper, faux flowers, and more, children can let their creativity shine as they design a basket that reflects their unique style.

After decorating, each child will proudly take home their one-of-a-kind Easter basket—perfect for egg hunts and spring celebrations. This hands-on activity encourages creativity, self-expression, and festive fun in a joyful, supportive environment

[Book Your Place](#)

**Open Art Cafe  
Rottingdean  
Good Friday - Easter Fayre  
10am - 3pm**



Come along to the **Open Art Cafe** on **Good Friday** for our Easter Fayre -

We have preloved clothes stalls, pet stalls and Easter stalls and lots of lovely cakes on offer!

And only £5 for a bacon roll and a tea!

We look forward to seeing you!

**Friday 3rd April**

**10am - 3pm**

[Follow Us On Facebook](#)

**Saltdean Lido**  
**Wild Science Presents**  
**An Easter Story**  
**Friday 3rd April**  
**10.30am - 11.30am**



Enjoy anything from an Easter Bunny adventure to an egg hunt with a twist searching for animals instead of eggs.

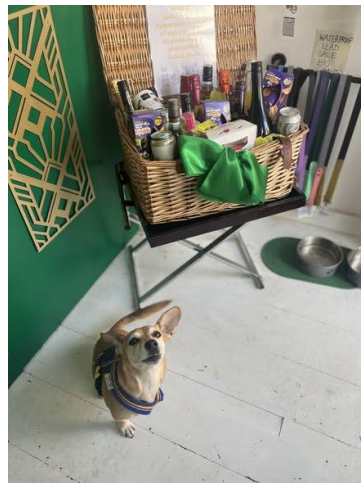
**Wild Science Easter Story Show Workshops** are perfect for young children! We enthusiastically recommend these engaging sessions for kids under 10.

**Book Now**

**St Martins Church  
Craft Afternoon & Easter Egg Hunt  
Saturday 4th April  
2pm - 3.30pm**



**Helping Paws  
Easter Raffle**



**EASTER RAFFLE**

Our lovely friends at **Deco Dogs** are holding a fantastic raffle for **Helping Paws**. It is full of amazing things including a bottle of whiskey, a bottle of vodka, loads of wine, beer and chocolate.

Tickets are £5 each and are available from Deco Dogs.

The raffle will be drawn at our pub quiz in **The Plough on 14th April** and the winner will be notified next day.

**Deco Dogs**  
**57 High Street**  
**Rottingdean**



**Saltdean Lido**  
**Wiggles and Giggles**  
**Easter Family Party Monday 6th April**  
**11am - 1pm**



Celebrate springtime together at our joyful Family Easter Party! Bring the whole family for a party filled with laughter, fun activities, and cheer. Kids can enjoy an exciting Easter creative crafts, and games, while parents relax and join in the celebration.

The Easter Bunny will be paying a visit with an egg for each child. It's the perfect way to connect with friends and family, and create special memories with your loved ones.

All ages are welcome — come ready for fun, smiles, and a hoppin' good time! 🌸 🐰

[\*\*Book Now\*\*](#)

**St Wulfran's Church  
Ovingdean  
Friday 3rd April at 11am**



**“Who killed the King?”**

**The Good Friday story in  
verse, songs and readings,**

**following the dramatic events leading to  
the Cross, moving around the church and  
churtyard.**

**For all ages. Friday 3 April 11am**

**Hot cross buns to follow**



**Rottingdean Cinema  
Saturday 4th April  
7.30pm**



Tickets available from Deveson's Grocers, High St or  
Rottingdean Emporium & Gallery,  
Park Road.

## Advertise In The Dean Scene!



**THE DEAN SCENE**  
Your Business Could Be Here

### Turn Local Readers Into Local Clients

✔ Local businesses already seeing results!

- ✔ **1,500+** local subscribers and growing\*, soon to be 2,000+ with our new social media push!
- ✔ **Weekly** inbox delivery
- ✔ **Trusted** local newsletter
- ✔ **Proven** results for advertisers

*“We’ve already gained a number of new clients from advertising in The Dean Scene”*

**Jacqueline Kennedy**  
Divine Light Holistics

Advertise from just  
**£20.83** +VAT per week  
per week

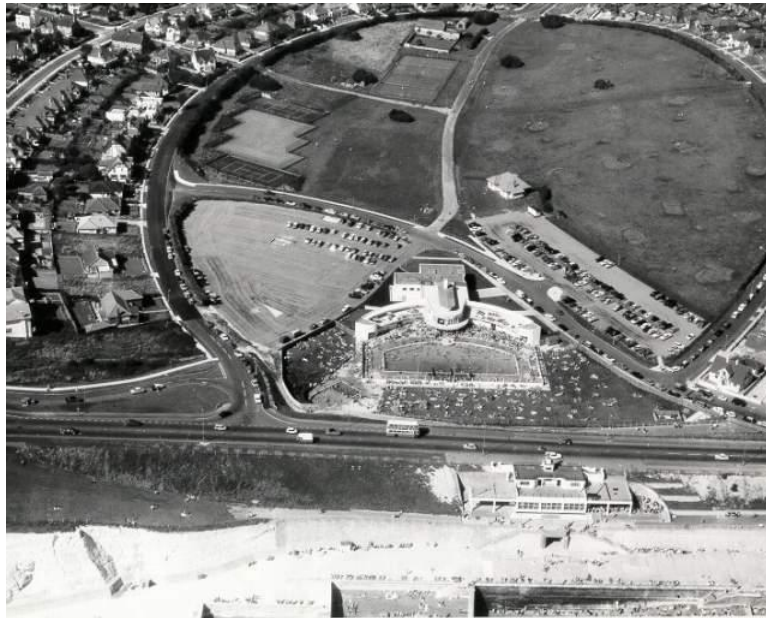
Advertise in The Dean Scene

[DeanScene.co.uk/Business](http://DeanScene.co.uk/Business)

**Email Lisa !**



## **Saltdean Tennis Club....**



### **The History of Saltdean Tennis Club.... By Rita Mullins**

"I moved to Saltdean in 1958 from Wimbledon. There wasn't a tennis club in Saltdean at the time but my cousin played tennis and he arranged a meeting with friends who also played tennis.

There were 4 very old courts where the bowling green is now, and they were owned by Charles Neville of the Saltdean Estate Office.

We formed the tennis club and paid the Saltdean Estate Co. annual rental to use the courts. We played friendly matches against other private clubs in Sussex at weekends back then. Things changed in 1961 when the Saltdean Oval was purchased by Brighton and Hove Council - the club had to change to a "parks club" and we joined the Brighton & Hove Parks League and have played matches since 1961.

At present we have 5 teams playing in the league and the club has over 100 members. I have watched the tennis courts change over the decades and remember the Council taking our 5th court and turning it into a football court - it was sad it got left to decay but now it's been refurbished and is fit for the next generation of young people to have a safe space to play.

I'm really pleased that our coach Jack Palmer is doing so well and young people are joining the club and the tennis club is going from strength to strength.

Not long ago we took over the responsibility of managing the tennis courts and have a lease. We are a club run by volunteers for our members but also manage the bookings for the public to turn up and play.

I have seen many things in my day, gin in water bottles, extraordinary gamesmanship and great team victories by our players!

I have now played at the club for 68 years have had the privilege of serving in every role on the committee. Last season I captained our Vets team and we won the league with matches to spare!

At our AGM in February our committee honoured me with the title of President."

**Rita Mullins.**



Saltdean circa the early 1930s before the Saltdean Lido, Butlin's Ocean Hotel, White Cliffs Cafe or Marine View.

The building on the clifftop is the Smuggler's Haunt Cafe which was built in the mid-1920s. At this time property developer Charles Neville, was turning more of his attention away from Peacehaven and on to Saltdean.

Note the plot of land where the lido was to stand is made up tennis courts.



**Rita in action!**

### **More about Saltdean Tennis Club...**

Here at Saltdean Tennis Club, our aim is to provide affordable tennis for all. Whether you are new to the game, looking to improve your tennis or just want to have some great games with a friendly local bunch, we welcome everyone.

As a community parks club, the courts are available to hire for pay and play by the public and non-members who wish to book a court and have fun playing tennis with friends and family.

Saltdean Tennis Club is proud to be at the heart of competitive tennis across the Brighton & Hove Parks clubs. We not only run our own league teams but also host and organise the Sussex County League teams representing Parks players from across the city.

#### **Members Benefits**

Members can access free advance court booking, have access to club sessions, and all club competitions.

There are free social sessions weekly, evenings and weekends plus a range of intra-club and league tournaments. And not to forget regular social events!

Club Annual Membership runs from 01 April each year and we offer family, junior and adult membership packages.

We have a great coach for all levels of ability and the junior coaching is growing really well - come and see us **today** at our **Open Day!**

**Join Saltdean Tennis Club**

# Later This Month In The Deans...

**Saltdean Beach Clean**  
**Sunday 5th April**  
**11am-12.30pm**



**Don't Forget!**

Our next **Beach Clean** will be at **Saltdean Beach** on **Easter Sunday, 5th April.**

We'll be there from **11am-12.30pm**, all equipment provided or feel free to bring your own.

It's a great way to work up an appetite for your big Easter Sunday lunch: why not bring the family along with you and make it a proper Easter party?

**Follow Us On Facebook**

**Pre-Loved Market**  
**Saltdean Lido**  
**Sunday 5th April**  
**11:00 - 15:00**



Join us at the Lido for a lively day of bargain hunting, treasure spotting and proper old-fashioned rummaging. Expect a fantastic mix of sellers bringing along everything from vintage gems and bric-a-brac to homewares, toys, books, clothes, collectibles and plenty of unexpected finds. You never quite know what you'll come across — and that's all part of the fun.

Set against the beautiful Art Deco backdrop of the Lido, it's the perfect spot to wander at your own pace, chat with friendly stallholders, and maybe even try your hand at a bit of haggling.

Whether you're searching for something specific, furnishing on a budget, clearing out your own cupboards, or simply love the thrill of discovering a hidden bargain, there's something here for everyone.

Bring your reusable bags, grab a coffee, and settle in for a relaxed day of treasure hunting by the sea.

Free entry. All welcome.

**St Martins Church  
Friendship Cafe**

**Third Monday of the Month  
2pm - 3.30pm**



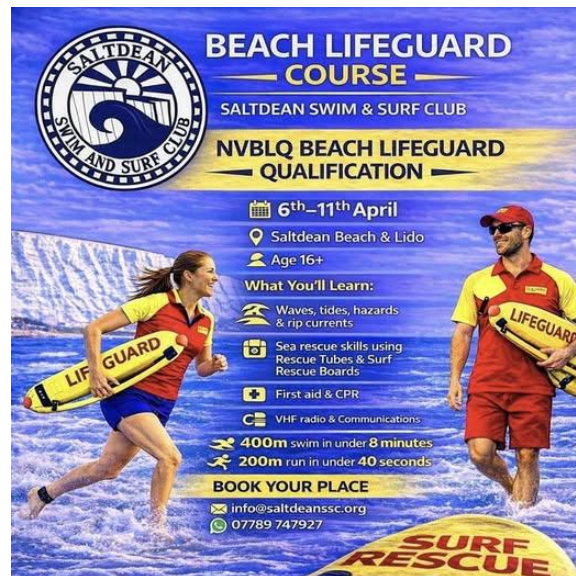
We offer a warm space, a hearty welcome and Refreshments, including home made cakes.

We offer a place to chat and make new friends.  
We normally have a craft table and a jigsaw on the go most weeks, plus a selection of games to play, but if you have a game you enjoy, bring it along to share.

We do not charge for the session but there is a box for donations.  
Come and meet us. We look forward to welcoming you.  
The Friendship Café Team

**St Martin's Church, Longridge Avenue, Saltdean**

**Saltdean Swim & Surf Club  
Beach Lifeguard Course  
6th - 11th April**



We're excited to announce a **BEACH LIFEGUARD COURSE** run by **Saltdean Swim and Surf Club**.

Saltdean Swim & Surf Club are running a National Vocational Beach Lifeguard Qualification (NVBLQ) starting Monday 6th April.

This is the qualification needed to work as a professional beach lifeguard in the UK, including with organisations such as the RNLI

If you enjoy the sea, fitness, teamwork and helping people, this is an amazing qualification to have.

**Course Dates:**

**Mon 6th – Fri 10th April**

**Assessment Sat 11th April**

**40 hour course**

**Training will take place at Saltdean Lido and Saltdean Beach**

**Cost:**

**£320 course fee plus**

- Surf Lifesaving Great Britain membership SLSGB £36

What you will learn:

Understanding waves, tides, hazards & rip currents

Sea rescue skills using Rescue Tubes & Surf Rescue Boards

Lifeguard communications including VHF radio

CPR, Defibrillator use & First Aid

Beach patrol skills and lifeguard duties

Fitness Requirement

- Swim 400m in under 8 minutes
- Run 200m in under 40 seconds

**To reserve a place contact:**

**Kevin Pope**

**WhatsApp: 07789 747927**

**Reserve Your Place By  
Email**

**Woodingdean Wilderness Group**  
**Friday 10th April**  
**2pm - 4pm**

**Woodingdean Wilderness Group**

**Would you like to learn to Scythe?**

Join us at one of our scything workshops on the WWG Nature Site, Warren Road. It is free, fun, environmentally friendly and good exercise.

Full instructions and safety briefing will be given before we begin. Please wear tough, enclosed footwear with trousers and bring your own refreshments for the afternoon sessions.

Fri 10 April 2 - 4pm  
Sat 27 June 10am - 1pm  
Fri July 2 - 4pm

**ADVANCE BOOKING** is required and no under 16s or dogs at these sessions for Health and Safety reasons.

All Sessions will be at the WWG Nature site, outside the West Lawn Memorial Park entrance, Warren Road, BN2 6DD.

What3Words: ///apples.shade.fans

For more information and to book a place on any of the above sessions please contact [info.woodingdeanwilderness@gmail.com](mailto:info.woodingdeanwilderness@gmail.com)

An exciting opportunity for anyone who wants to learn how to scythe.

Full training and safety instructions will be given before the event begins.

Scything workshops are planned for the following dates and booking is essential, as places are limited to 15 people.

**Friday 10 April 2 – 4pm**  
**Saturday 27 June 10am – 1pm**  
**Friday 2 July 2 – 4pm**

Please see the attached poster for further details.

📍 **Meet at:**  
**WWG patch, west entrance of the Lawn Memorial Park, Warren Road BN2 6DD or What3Words: ///apples.shade.fans**

🕒 **What to bring / wear:**

- Dress for the weather
- Enclosed footwear
- Trousers no shorts
- Your own gloves
- Refreshments

For health and safety reasons, no under 16s and no dogs are allowed at these sessions.

**To book a place please email [info.woodingdeanwilderness@gmail.com](mailto:info.woodingdeanwilderness@gmail.com) and specify what day you are booking.**

[Email Now!](#)

[Privacy Policy](#) | [Terms of Use](#) | [Contact Support](#)

Rockhouse Publishing Limited T/A The Dean Scene

Copyright © 2025. All rights reserved.

