

**Edition 44 - 27th June, 2026**



Hi,

**Welcome to this week's edition of the Dean Scene!**

We hope you managed to keep cool and make the most of last week's glorious sunshine!

As June draws to a close, we've thoroughly enjoyed shining a spotlight on **Raystede Animal Welfare Centre** and the incredible work they do for animals across Sussex. Their upcoming **Rabbit Day on the 4th July** looks like a wonderful event and a great opportunity to learn more about these much-loved pets.

Looking ahead, we're delighted to announce that **Rottingdean & Saltdean Lions Club** will be our Charity of the Month for July. Nominated by one of our readers, they couldn't be featured at a better time, with the much-anticipated **Lions Gala & Dog Show** just around the corner.

Music lovers are in for a treat this weekend too, with a fantastic programme of local entertainment on offer. From the beautiful sounds of the **Ovingdean Choral Society** to the lively performances of the **Brighton Big Band on Rottingdean Terraces**, there's something for everyone to enjoy.

As always, thank you for reading, supporting local organisations, and helping to keep our wonderful community connected.

Enjoy this week's Dean Scene!

**Please note:** If you'd like to contact me, please email [lisa@deanscene.co.uk](mailto:lisa@deanscene.co.uk) rather than replying directly to this newsletter, as replies are not always seen promptly.

Best Wishes,

Lisa Staples

## What's Happening In The Deans This Week...

### The Grange Gallery

#### "From the Land To The Sea"

Wednesday 24th June - Sunday 12th July



#### About This Exhibition:

Nine local Sussex artists capture the soul and essence of our changing environment. Through differing art mediums, we tell the stories of our constantly inspiring muses of the Downs and the sea exploring our dreams, walks and experiences. Come travel with us in our journey from the land to the sea.

**Artists:** Vicky Gomez (printmaker), Clair Butler (Printmaker), Suzi Lowe (Painter), J. D. Liebe (Painter), Kate Aekbote (Painter), Michael Steven

Harris (Photographer), Caroline Martin (Painter), Gitte Porsgaard (ceramics) Allison Murphy( painter/printmaker)

The Grange Gallery (Rottingdean Heritage) is located on The Green in the picturesque village-on-the-sea of Rottingdean in East Sussex. We are opposite the village pond and The Plough Public House. The exhibition is on a first floor (above Rottingdean Library) and a chairlift is available. Gallery opening hours are Wednesday to Saturday 10.00 am to 4.00 pm and Sunday 1.00 pm to 4.00 pm. Admission free.

## **Ovingdean Choral Society Tomorrow 7.30pm!**



**Ovingdean Choral Society  
Summer Concert  
Sunday 28 June, 7.30pm  
Ovingdean Village Hall**

**A summer evening of beautiful and  
uplifting choral music**

**Bar and complimentary interval canapés.**

**Tickets £15 from: Ewart Wooldridge  
(07584 496190)**



**Do you enjoy singing? We are recruiting new  
singers for the autumn term. Come and try out  
our friendly choir— all welcome, no auditions .  
Contact Ewart –see above**

**Rottingdean Arts  
2026 Season  
Rottingdean Terraces**

**The Brighton Big Band  
Tomorrow 3pm**

**ROTTINGDEAN ARTS 2026 SEASON**

**FREE CONCERTS ON ROTTINGDEAN TERRACES STAGE**  
June-August

Supported by a generous grant from Rottingdean Parish Council and maintenance of the Stages by Supreme Clean of Saltdean

**THE BRIGHTON BIG BAND**  
This popular local band returns to sing and play swing music with songs by Frank Sinatra, George and Ira Gershwin, Cole Porter and Glen Miller.



**Sun 28 June 3.00pm** St Margaret's Church if wet  
*Sponsor Jane Adkin in memory of her husband Dave*

**THE BRIGHTON GAY MEN'S CHORUS**  
BGMC have created a space where people can celebrate music, enjoy the fellowship of other like-minded people and contribute to the local communities. Popular songs about love and loss by a huge choir.



**Sun 5 July 3.00pm** St Margaret's Church if wet  
*Sponsor Bridget Fishleigh*

Over 100 guys on The Terraces singing pop and soul

**Advertise In The Dean Scene...**



APPROACHING OUR  
**1<sup>ST</sup> ANNIVERSARY**

**REACH 2,000  
LOCAL CUSTOMERS**

*Advertise in The Dean Scene – from just £20.83 + VAT per week*

**2,000 Engaged Subscribers**  
Delivered every Saturday morning to residents across Rottingdean, Saltdean, Woodingdean, Ovingdean & Roedean

**Established & Trusted**  
Approaching our 1st Anniversary – a newsletter our community opens, reads and relies on week after week

**Free Artwork Included**  
We'll create eye-catching, professional ad artwork for you at no extra cost – ready to run

Get in touch today:  
[lisa@deanscene.co.uk](mailto:lisa@deanscene.co.uk)

**ADVERTISE WITH US**

[deanscene.co.uk](http://deanscene.co.uk)

# **Saltdean Tennis Club**

## **Mondays 10.30am - 12.00pm**

### **Walking Tennis Session at Saltdean Tennis Club**

#### **Mondays from 10.30am - 12.00pm**



An introduction to this modified, low-impact version of tennis designed for all ages and abilities and those recovering from injury. It is played with slower soft balls than usual and the key rules include no running or jumping, and allowing the ball to bounce twice.

The session is open to both tennis and bowls club members as well as the wider community, a small £3 fee for non-members payable on the day. This session run for the duration of the summer. The session will be followed by refreshments in the clubhouse.

There is no need to book a place please let us know if you intend to come by emailing [saltdeantennissocial@gmail.com](mailto:saltdeantennissocial@gmail.com)



**Email To Let Us Know You Are Coming!**

**Become a Friend of Raystede**



Your monthly gift means we can continue to rescue, rehabilitate, rehome and provide lifelong sanctuary to thousands of injured and abandoned animals. Become a **Friend of Raystede** and help us be there for them today, tomorrow and in the future.

### What you receive as a Friend

- Monthly e-newsletter
- Twice yearly Raystede magazine
- Invitation to exclusive Friends of Raystede events twice a year
- Raystede Pet Care Guide
- Raystede window sticker

**Become A Friend of Raystede**

### Woodingdean Carnival Woodingdean Primary School Saturday 4th July



Our annual community celebration is a fabulous event for all ages and entry is free!

There is always plenty to do! Family focused activities and of course the performances, from local groups, in the central arena throughout the day. Subsidised attractions include a soft play fun house and rocking galleon. Delicious food will be available and there is a licensed bar

Our Carnival Procession starts the day in style with the traditional community parade from Central Park (Lockwood) to the Carnival field. The parade's energetic and colourful arrival heralds the start of the celebrations and sets a happy tone for the day ahead. If you run a local group and would like to take part, please contact us (details below).

Stalls run by local organisations, groups and businesses are set up around the school field to sell wares and raise awareness for good causes. Stall bookings can be made online until all pitches are taken (application form: <https://bit.ly/4aBA7Rv> Stall fees are £30 for businesses and £15 for community groups or charities. Priority is given to local community groups, local charities and local small businesses.

Carnival would not be possible without the generous support of local businesses, many of which have contributed towards Carnival for decades! The event is organised by volunteers and relies on donations to go ahead each year. Donations towards running costs are gratefully received. If you can help, please let us know. We are extremely grateful to all our supporters and volunteers.

We always require volunteers on the day, and if you can spare an hour or more, support us with a donation of any kind, or would like to take part in the Carnival Parade, please email [woodingdeancarnival@gmail.com](mailto:woodingdeancarnival@gmail.com) and one of the team will be in touch.

[Facebook.com/Woodingdeancarnival](https://www.facebook.com/Woodingdeancarnival)

## **Yoga With Ocean on Rottingdean Terraces (outdoor fundraising class) Every Saturday!**



A unique opportunity to practice gentle yoga at the iconic **Rottingdean Terraces**, with a stunning view of the ever-changing sea.

All levels and abilities are welcome, and no previous experience is necessary. You are welcome to practice as restfully or as dynamically as feels best for you.

Ocean will take the class and is a local teacher and has been loving practicing and exploring yoga for over 26 years.

If you can, please bring a yoga mat or let Ocean know before the class if you need one.

Please let Ocean know of any relevant health situations or conditions, or if you are differently abled in some way, at [oceanamma@gmail.com](mailto:oceanamma@gmail.com)

**As this is a fundraising class please book if you are planning on coming as we need a minimum number of people for the class to take place. We will let you know by Friday 10am if the class is cancelled for any reason.**

*"I always feel so relaxed after class! Like I can take on anything!" "Ocean's class is a highlight of my week.*

*A time of calm and explorative yoga that can challenge if you want it to, or be more restorative if that is what suits you that day. The class varies each week with a great flow and a variety of postures.*

*Ocean is very responsive to individual needs and delivers the session with professionalism and expertise."*

**Book Your Place Now!**

**South Coast Taxis - 01273 301111**

**SOUTH COAST TAXIS** 24/7 TAXI

24/7 ALWAYS HERE FOR YOU LOCAL COVERING YOUR AREA RELIABLE PROFESSIONAL SERVICE SAFE COMFORTABLE JOURNEYS

**01273 301111**

✈️ GATWICK £60 ✈️ HEATHROW £120

WOODINGDEAN | ROTTINGDEAN | SALTDEAN | OIVINGDEAN



Scan The QR Code that will take you to our APP

## **Saltdean Residents & Community Association Refurbishing Saltdean Tunnel's Mural**



Our aim is to refurbish the mural in Saltdean tunnel and repaint the turquoise railings... and we need YOUR help!

It's been six years since the mural in Saltdean tunnel was completed. It's weathered the elements pretty well but really needs some TLC now as parts are peeling off/have faded.

The photos above are of before, after and today.

If you, your family and friends love the mural then please would you contribute to our crowdfunder. The £20s, £10s and £5s will all add up and every contribution will help us restore and preserve this unique piece of community art for years to come. We have some money already from the bricks that people have bought. You can also buy a personalised brick in the tunnel for £125 for your loved ones.

If we reach our target we will also get the turquoise railings on the undercliff at West Saltdean repainted too.

The crowdfunder is being run by the Saltdean Residents and Community Association which is a charity that can claim gift aid. So every £20 donation from a UK tax payer becomes £25.

### **We Can Do It!**

Please email, message or call if you would prefer to make a bank transfer or send a cheque, donation cash: **07946 342 903** and [saltdeancommunitycharity@gmail.com](mailto:saltdeancommunitycharity@gmail.com)

**Donate Here!**

**Raystede Animal Welfare Centre  
All About Rabbits Day!  
Saturday 4th July**



## Calling all Rabbit Owners – and Those Thinking About Adopting!

**Saturday 4th July - 10am til 4pm**

Whether you're a rabbit owner, thinking about adoption or would like to learn more, come along to our **All About Rabbits Day** and discover how to give pet rabbits a happy, healthy life!

**Book Your Place!**

**This is What a Great English Summer Looks Like!**

**Shop Charles Bentley's Outdoor Furniture Range Now...**

An advertisement for Charles Bentley outdoor furniture. The top left corner features the brand name 'CHARLES BENTLEY' in a serif font, with 'Family run since 1860' in a smaller font below it. The main image shows a light-colored outdoor sofa and two matching armchairs arranged around a wooden coffee table in a garden setting. The coffee table holds a pitcher of water, two glasses, and a vase of flowers. The background is a lush garden with trees and a stone wall. The bottom of the advertisement has a dark blue background with white text: 'Make This Summer One to Remember' in a large, bold font, followed by 'Premium garden furniture for every outdoor space — beautifully crafted, built to last' in a smaller font, and 'Shop now at [charlesbentley.com](https://charlesbentley.com)' in a gold font.

**CHARLES BENTLEY**  
*Family run since 1860*

**Make This Summer One to Remember**  
Premium garden furniture for every outdoor space — beautifully crafted, built to last  
Shop now at [charlesbentley.com](https://charlesbentley.com)

**Visit Charles Bentley**

## Rudyard Kipling Primary School PTFA Summer Raffle 2026



Rudyard Kipling Primary School PTFA Summer Raffle 2026!

Get ready because this is our biggest raffle yet with some incredible prizes:

First prize is an amazing Nintendo Switch 2

Second prize a 4 ball round at East Brighton Golf Club

Thanks to all of our generous local businesses who have donated!

**Raffle tickets are now available to buy from Ovingdean Stores**

Tickets can be purchased up until 2pm on the 17th July 2026

RAFFLE will be drawn on July 17th 2026 at 3.15pm

**PLEASE NOTE RAFFLE TICKETS HAVE  
THE INCORRECT DATE ON THEM!!!**

## Divine Light Holistics



### ✦ Step Into July Feeling Relaxed, Balanced and Refreshed ✦

Are you ready to make a little time for yourself this summer?

Hi, I'm **Jacqueline**, a holistic therapist dedicated to helping women relax, restore and reconnect with themselves. Whether you're feeling stressed, tired or simply in need of some well-deserved self-care, my treatments are designed to leave you feeling calmer, lighter and re-energised.

To welcome new clients, I'm offering **special introductory prices throughout July** – the perfect opportunity to invest in your wellbeing and experience the benefits of holistic therapy.

.

### 🌿 Exclusive Offer for Dean Scene Readers! 🌿

Receive **£10 off any treatment** when you mention **The Dean Scene** at the time of booking.

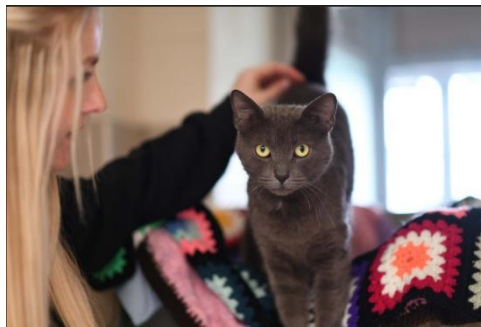
Take the first step towards a calmer, more balanced you this July – because self-care isn't a luxury, it's a necessity.

[www.divinelightholistics.com](http://www.divinelightholistics.com)

**Visit The Website**

# Charity of the Month

## Raystede Animal Welfare



### **Could you open your heart and your home to a foster dog, cat or small animal?**

Raystede is looking for foster carers to help some of its rescue animals.

Fostering an animal is perfect for those who miss the company of a pet but can't commit to adoption. The length of fostering varies depending on the individual animals' needs but is usually for around 3 months or until the animal finds a new home.

Fostering best suits people who are home most of the day, such as those who work from home or are retired. Raystede provides fosterers with the necessary training, equipment, support and veterinary care.

Animals need fostering for a variety of reasons; some have had difficult pasts or need support with more challenging behaviours.

Foster carers become an integral part of a compassionate team, joining like-minded individuals dedicated to making a positive impact in the lives of vulnerable animals.

Raystede also needs fosterers to help support its Break Away service. The scheme helps owners who are fleeing domestic abuse or facing short-term hospitalisation and need temporary care for their animals.

Find out more and apply here: [www.raystede.org/foster](http://www.raystede.org/foster)

## Learn More About Animal Fostering

### Later In The Deans...

Ovingdean Farm Fest

11th July

11am - 4pm



## Saltdean Lido Outdoor Cinema Coming Soon...



[Visit The Cinestock Website](#)

**Rottingdean Drama Society**  
**15th - 18th July**  
**Rottingdean Public Hall**



It takes a village to put on a show, and this is ours!

From directing and producing, to props, costume, stage management, set building, lighting, sound, front of house and everything in between... the story of **Birthday Candles** is already being shaped by a dedicated team.

Rehearsals are well underway and we cant wait to share this beautiful story with you!

Tickets are now on sale!

**Book Tickets Here!**

**Rottingdean & Saltdean Lions Club  
Lions Gala & Dog Show  
Saturday 18th July**



**Rottingdean & Saltdean  
Lions Club**  
Also serving Woodingdean, Ovingdean and Falmer



**Lions Gala  
and Dog Show**

**The Oval, Saltdean  
Saturday, 18th July 2026  
11.00 am to 4.00 pm**

**Dog Show  
Registration from  
11.00 am**



**Licensed bar with REAL ALE, barbeque,  
stalls, arena events, raffle and  
Refreshments.**

**Admission Free**

Rottingdean & Saltdean Lions Club Charitable Trust Fund N° 1001889

## Rottingdean Whiteway Centre



### Volunteer Building Maintenance Assistant

We are looking for a Volunteer who can:

- Assist our Building Manager volunteer in the maintenance of the structure and services of our building
- Be specifically responsible for ensuring that the Centre's Health & Safety Policy is fully implemented
- Part of Management Committee



For more information or to discuss, please contact [Bill@rwc.org.uk](mailto:Bill@rwc.org.uk)

We are looking for a volunteer to assist our Building Manager in the maintenance of the structure & services of the Whiteway Centre. Could this be you? Contact our Chair on [bill@rwc.org.uk](mailto:bill@rwc.org.uk).

### Contact Us By Email Here

[Privacy Policy](#) | [Terms of Use](#) | [Contact Support](#)

Rockhouse Publishing Limited T/A The Dean Scene

Copyright © 2025. All rights reserved.

