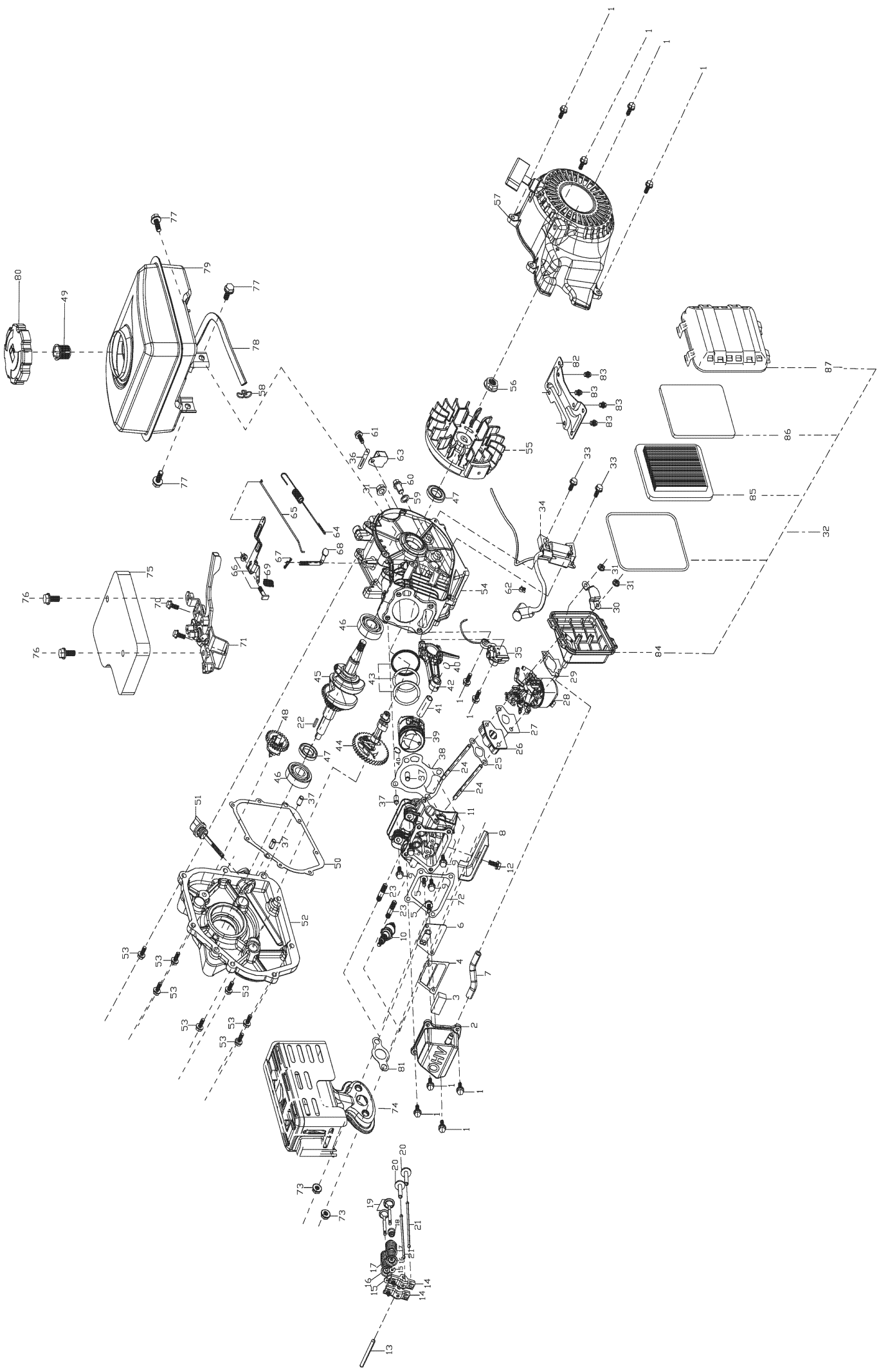




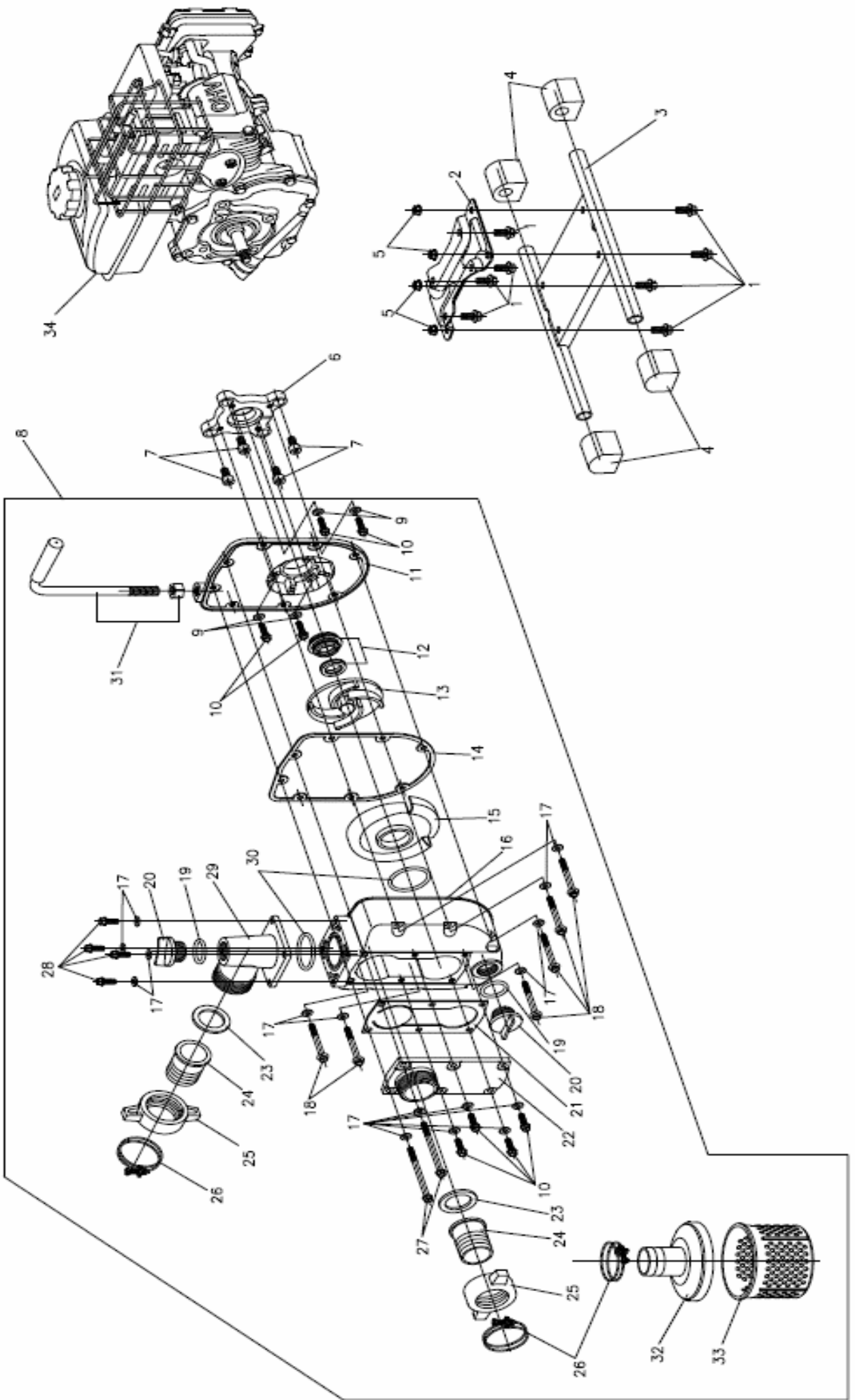
MX GASO 40

**SCHEDA RICAMBI
SPARE PARTS**



1	LC 3806505510001	Hexagon bolt with flange
2	LC 1202301740002	COPERCHIO TESTATA - CYLINDER HEAD COVER
3	LC 1502900400001	FILTRO TESTATA - ENGINE OIL STRAINER
4	LC 1108500280001	GUARNIZIONE SFIATO TESTATA - PACKING BREATHER CHAMBER
5	LC 3801404970002	Hexagon bolt with flange
6	LC 1108400370001	GUARNIZIONE TESTATA - CAP BREATHER CHAMBER
7	LC 3807412500002	TUBO SFIATO - BREATHER TUBE
8	LC 1601901040001	DEFLETTORE ARIA - AIR DEFLECTOR
9	LC 3801405150001	Hexagon bolt with flange
10	LC 2709600540001	CANDELA - SPAR PLUG
11	LC 1200807400001	TESTATA - CYLINDER HEAD
12	LC 3801400390003	Hexagon bolt with flange
13	LC 1405100460001	ALBERO VALVOLA - SHAFT ROCKER
14	LC 1404500800001	VALVOLA BILANCIAMENTO - VALVE ROCKER COMB.
15	LC 1403900280001	VALVOLA BLOCCO - LOCKING PLATE
16	LC 1403800380001	MOLLA VALVOLA RITORNO - SEAT VALVE
17	LC 1403400380001	MOLLA VALVOLA INTERNA - SPRING VALVE
18	LC 1404000240001	VALVOLA TENUTA - SEAL GUIDE
19	LC 5005500930001	KIT VALVOLE - VALVE KIT
20	LC 1406900210001	ALZAVALVOLE - TAPPED VALVE
21	LC 1406700600001	ASTA SPINTA - PUSH ROD
22	LC 3806200320001	CHIAVETTA - KEY
23	LC 3801801490001	PRIGIONIERO - STUD
24	LC 3801801440001	PRIGIONIERO - STUD
25	LC 1704301980001	GUARNIZIONE CARBURATORE - GASKET CARBURATOR
26	LC 1704401090001	DISTANZ.CARBURATORE - HEAT INS.CARBURATOR
27	LC 1704301990001	GURANIZIONE CARBURATORE - GASKET CARBURATOR
28	LC 1700218130002	CARBURATORE - CARBURATOR
29	LC 1704302000001	GUARNIZIONE CARBURATORE - GASKET CARBURATOR
30	LC 1803300580001	Support plate body of filter element
31	LC 3803700480001	Hexagon nut with flange
32	LC 1800208710001	FILTRO ARIA COMPL. - AIR FILTER COMPL.
33	LC 3801402660002	Hexagon bolt with flange
34	LC 2709203860001	BOBINA INIEZIONE - COIL ASSY IGNITION
35	LC 2818502980001	SENSORE LIVELLO OLIO - OIL SENSOR LEVEL
36	LC 3809403460001	Cable cleat
37	LC 3806001190001	PIN - LOCATION PIN
38	LC 1201502370001	GUARNIZIONE TESTATA - GASKET CYLINDER HEAD
39	LC 1300302880001	PISTONE -PISTON
40	LC 3805600980001	SEGER - CLIP PISTON PIN
41	LC 1300600600001	PIN PISTONE - PISTON PIN
42	LC 1301501300001	BIELLA - CONNECTING ROD
43	LC 1300702500001	KIT SEGMENTI - PISTON RING COMBINATION
44	LC 1400201610001	INGRANAGGIO - CAMSHAFT ASSY
45	LC 1302905770001	ALBERO - CRANKSHAFT
46	LC 3806300050001	CUSCINETTO - BEARING

47	LC	3806505510001	PARAOLIO - OIL SEAL 20X35X5
48	LC	1717500370001	INGRANAGGIO - COMP.GOVERNOR GEAR
49	LC	1707200010001	FILTRO SERBATOIO - FILTER FUEL TANK
50	LC	1108300670001	GUARNIZIONE CORPO CARTER - CRANKCASE COVER GASKET
51	LC	1106901040001	TAPPO OLIO - OIL RULE
52	LC	1108201710001	CORPO CARTER - CRANKCASE COVER
53	LC	3801400860002	Hexagon bolt with flange
54	LC	1108103460001	CORPO CARTER PRINC. - CRACKCASE COVER
55	LC	2700203040001	VOLANO COMPL. - FLYWHEEL COMP.
56	LC	3803700490001	Hexagon nut with flange
57	LC	1934904200001	AUTOAVVOLGENTE - RECOIL STARTER COMP.
58	LC	3809501880001	Pipe clip
59	LC	3804505140001	Flat washer
60	LC	1102600250001	Sealing plug screw
61	LC	3801400390003	Hexagon bolt with flange
62	LC	3809300240001	Location wire nail
63	LC	2818900010001	SENSORE OLIO - ALERT UNIT OIL
64	LC	1716100330001	MOLLA RITORNO - THROTTLE RETURN SPRING
65	LC	1715900350001	ASTA ACCELERATORE - THROTTLE ROD
66	LC	1716200460001	BRACCIO REGOLATORE ACCELERATORE - SPEED REG.BRACKET
67	LC	3813500040001	Pin clip
68	LC	1716300290001	BRACCIO REGOLAZIONE ACCELERATORE - SPEED REG.ARM
69	LC	1716001100001	MOLLA REG - GOVERNOR SPRING
70	LC	3801400390003	Hexagon bolt with flange
71	LC	1716801420001	ACCELERATORE MANUAL - THROTTLE HANDLE COMB.
72	LC	1202500640001	GUARNIZIONE TESTATA - GASKET CYLINDER HEAD
73	LC	3803700740002	Hexagon nut with flange
74	LC	1805720910001	MARMITTA - MUFFLER
75	LC	1602000700001	PIATTO - SIDE PLATE
76	LC	3801401700003	Hexagon bolt with flange
77	LC	3801402090001	Hexagon bolt with flange
78	LC	3807509340001	TUBO OLIO - OIL TUBE
79	LC	1705012080002	SERBATOIO - TANK
80	LC	1708700390001	TAPPO SERB. - TANK CAP COVER
81	LC	1806501230001	GUARNIZIONE MARMITTA - OUTLET GASKET MUFFLER



1	LC		
2	LC		
3	LC		
4	LC		
5	LC		
6	LC	6603300010001	PIASTRA CONNESSIONE - CONNECTIG DISH
7	LC		
8	LC	6601800150001	CORPO POMPA COMPL. - BODY PUMP COMPL.
9	LC		
10	LC		
11	LC	6603100090001	GUARNIZIONE - GASKET
12	LC	6603500060001	TENUTA MECCANICA - MECH.SEAL
13	LC	6602000130001	GIRANTE - IMPELLER
14	LC	6603100090001	GUARNIZIONE - GASKET
15	LC	6602100110001	CHIOCCIOLA - VOLUTE CASING
16	LC	6602200120001	CORPO POMPA - HOUSING OF PUMP
17			
18			
19	LC	6602400030001	TAPPO CON GUARNIZIONE - PLUG WITH O-RING
20	LC	6602400030001	TAPPO CON GUARNIZIONE - PLUG WITH O-RING
21	LC	6603200050001	GUARNIZIONE VALVOLA - CHECK VALVE GASKET
22	LC	6602300060001	FLANGE ASPIRAZIONE - SUCTION FLANGE
23	LC	3808404400001	GUARNIZIONE - GASKET
24	LC	6602800030001	PORTATUBO - TIE IN TUBE
25	LC	6602700030001	GHIERA - LINKER
26			
27			
28			
29	LC	6602500060001	FLANGIA MANDATA - OUTPUT FLANGE
30	LC	3808404610001	O RING - O RING
31			
32	LC	6602900050001	COPERCHIO FILTRO - INTAKE FILTER COVER
33	LC	6603000050001	FILTRO - INTAKE FILTER SCREEN
34			
35			

