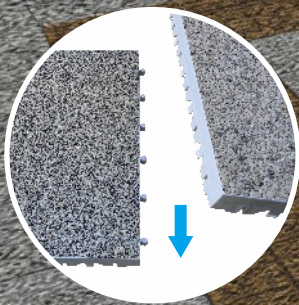


# //// TERRACO®

addagrip™



**clicktile**



## WHAT IS CLICKTILE?

ClickTile is a patented, interlocking, permeable outdoor resin bound stone paving system/indoor tile stone carpet flooring system. It is recommended for pedestrian use only. It can be used for roof terraces, patio terraces, courtyards, garden paths, public spaces, and light industrial display applications. Its attractive engineered design combines rapid installation, excellent drainage, and long-term durability.

- Fully finished attractive product
- Fast, tool-free installation, Install in all weathers
- Superior water drainage, Porous – prevents water ponding
- Stylish, durable, eco-friendly, Low maintenance

## KEY FEATURES & ADVANTAGES

### Patented Locking System

- Dual lock: Press and click to self-lock
- Fast and easy to fit, and fully removable
- Suitable for both permanent and temporary paving/flooring solutions

### Extreme Drainage Performance

- Permeability/Porosity ratio >20 L/sec/m<sup>2</sup>
- Drains faster than grass—no water pooling (20% open bottom structure + gravel gaps)

### Enhancements:

- Non-slip surface for safety
- Suitable for domestic/light commercial use
- Attractive temporary(reusable) flooring solution

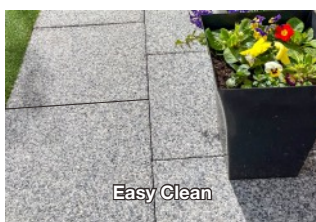
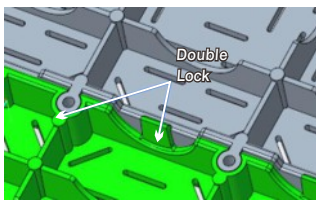
### Strength & Durability

- Tested to 12 MPa compressive strength
- UV resistant design

### Hassle-Free Maintenance

- Mold/algae resistant
- Durable resin bound quartz stone/pebble
- Suitable for power washing

## TECHNICAL CHARACTERISTICS



Test Item	Unit	Method	Test Result
Flexural strength	Mpa	According to GB/T 17671-2021	9.7
Flexural strength* (After cold/hot thermal cycling)	Mpa	According to GB/T 17671-2021	9.4
Compressive strength	Mpa	According to GB/T 17671-2021	12.5
Compressive strength* (After cold/hot thermal cycling)	Mpa	According to GB/T 17671-2021	11.8
Impact resistance (light load 500g steel ball)	n/a	According to GB/T 22374-2018	No spalling, no cracking
*Accelerated weathering chamber prior to test - 16 hours @ -20° C followed 8 hours @ 70° C for 4 cycles			

## AREAS OF APPLICATION

- Private gardens & patios
- Rooftop terraces
- Sidewalks and plazas
- Café outdoor seating
- Hotel & resort walkways
- Poolside areas
- Event hosting
- Golf course pathways
- Balconies

Clicktile can be installed on new or existing level solid substrates or laid on prepared compacted base layers. It is recommended for Pedestrian use only



## CLICKTILE COMPARED TO A TIMBER DECK INSTALLATION

25m <sup>2</sup> Area*	ClickTile	Wood Decking
Installation	DIY, tool-free	Requires sub-frame
Time Required	2-3 hours	2-3 days
Weather Impact	Minimal delay	Rain-sensitive
Drainage	High-permeability	Poor Permeability
Maintenance	Low, washable	Regular sealing needed
Aesthetics	Modern/natural/holds colour	Natural but fades
Weathering Properties	Moisture resistant	Moisture sensitive (Long term rotting of timbers)

\*Both finishes laid on an existing concrete solid substrate with fall in one direction.

## AVAILABLE IN 4 UNIQUE COLOURS



TCT-201



TCT-201P



TCT-204



TCT-206P



FLAT ROOF - BEFORE CLICKTILE INSTALLATION



FLAT ROOF - AFTER CLICKTILE INSTALLATION

## GETTING STARTED WITH CLICKTILE

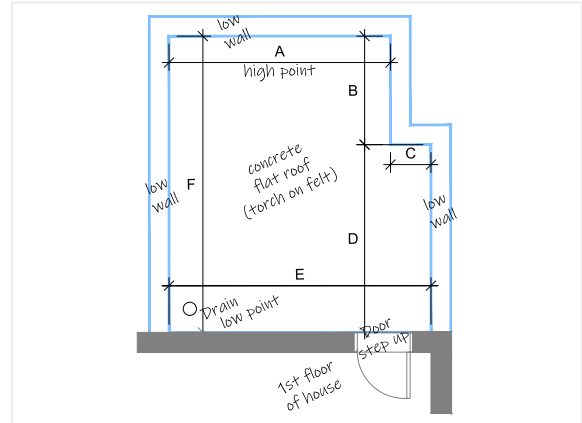
### STEP 1 By Customer

#### • Sketch

Provide Terraco representative with a preliminary site sketch plan showing the width and length of the area required, also the estimated level differences (show sloped falls to water outlet drains) across the area designated for the ClickTile installation.

#### • Photos

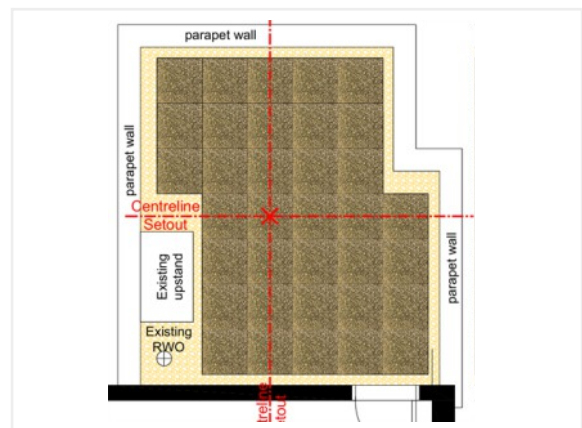
Provide Terraco representative with photographs and details of existing surface water drainage outlets, existing substrate details, parapet walls and any visible waterproofing, roof lights, vents, up-stands, staircases, and door or gate areas.



Example A- Roof Sketch Plan

### STEP 2 By Terraco

- Clicktile Preliminary Plan & Cost Estimates  
Terraco representative will provide customers. A Preliminary ClickTile layout plan. Suggested loose stone border\*  
Budget Estimates will be provided.  
Delivery costs provided (typically per pallet).



Example A- Clicktile Preliminary Plan

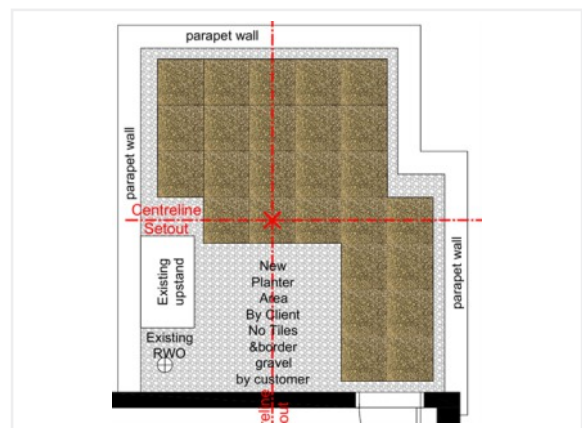
### STEP 3 By Customer/Terraco

#### • Final Design Plan & Quotation

Final Design Plan adjustments can be made between Customers and Terraco representative to meet their budgetary and design requirements typically include.

- Agreed Final Clicktile Plan
- Quantity of Tiles Indicated\*
- Quantity of border loose stone (optional)
- Quantity of Addagrip EZ (optional stone resin bond)
- Clicktile set out location to avoid cutting.
- Quotation for materials and delivery incl. vat.

\* Exact number of ClickTiles will be indicated, Terraco recommend an additional 5% of tiles is added for waste/breakages.



Example A -Terraco Clicktile Final Plan

# CUSTOMER CLICKTILE SET OUT MADE EASY !

**STRAIGHT WALKWAYS**  
 4.2M x 1.4M wide = 5.88M2.  
 Tiles:= 5.04 m2 Stone border = 0.84m2.  
**Quantities Quoted:**  
 Clicktile: Autumn Maple - 12 No. Tiles  
 Loose Stone: Autumn Maple - x 25kg bags  
 Stone bond: Addabond EZ - 1 No. 2Lbottle

**IRREGULAR SHAPED AREAS**  
 Example above: 14.6 M2.  
 Tiles:= 10.42 m2 Stone border = 4.18m2.  
**Quantities Quoted:**  
 Clicktile: Autumn Maple - 29 No. Tiles  
 Loose Stone: Autumn Maple x 25kg bags  
 Stone bond: Addabond EZ - 1 No. x2Lbottle

**COURTYARDS**  
 Example above: 12.24 M2.  
 Tiles:= 10.79 m2 Stone border = 1.45m2.  
**Quantities Quoted:**  
 Clicktile: Autumn Maplem - 30 No. Tiles  
 Loose Stone: Autumn Maple - x 25kg bags  
 Stone bond: Addabond EZ - 1 No. x2Lbottle

## PRE-INSTALLATION GUIDELINES

- ClickTile can be installed on a variety of solid substrates, it can be laid on new compacted hardcore and sand but is ideally suited for overlaying on old concrete, paved patios, artificial grass and flat roof structures.
- Power wash and clean the existing solid substrate, so the entire surface is free of organic matter and debris.
- Identify drains and mechanical and electrical service points which may need to be accessible for maintenance.

### For Flat Roof Installations

- Inspect the roof substrate to ensure it is structurally sound and inspect the flashings and any visible waterproofing layers. If any structural or waterproofing repair works are required, they should be scheduled before installing ClickTile.
- Ensure that the existing roof surface is properly graded or sloped to outlets without excessive areas of ponding. (Ponding can be identified by flooding the roof with water and inspecting after water drains off).
- Flatness deviation  $\leq 8\text{mm}$  is recommended for ClickTile installation, if low spot ponding is identified repair these areas with compatible waterproof material with adjacent existing finish.
- Verify the ClickTile layout plan and site dimensions are accurate before commencing.

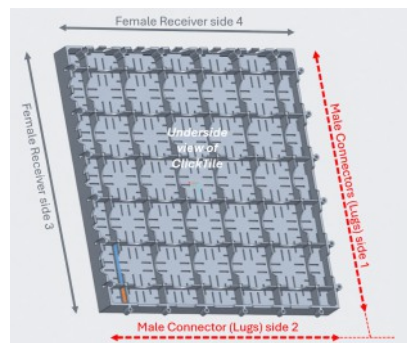


## PLAN FOR MECHANICAL AND ELECTRICAL SERVICES ACCESS

Review the site to define areas which will require periodic access. In areas which may need occasional access and aesthetics of the ClickTile is preferred, a Clicktile can be made easier to remove.

This can be done by removing the 2 Male connectors on 2 sides of the tile.

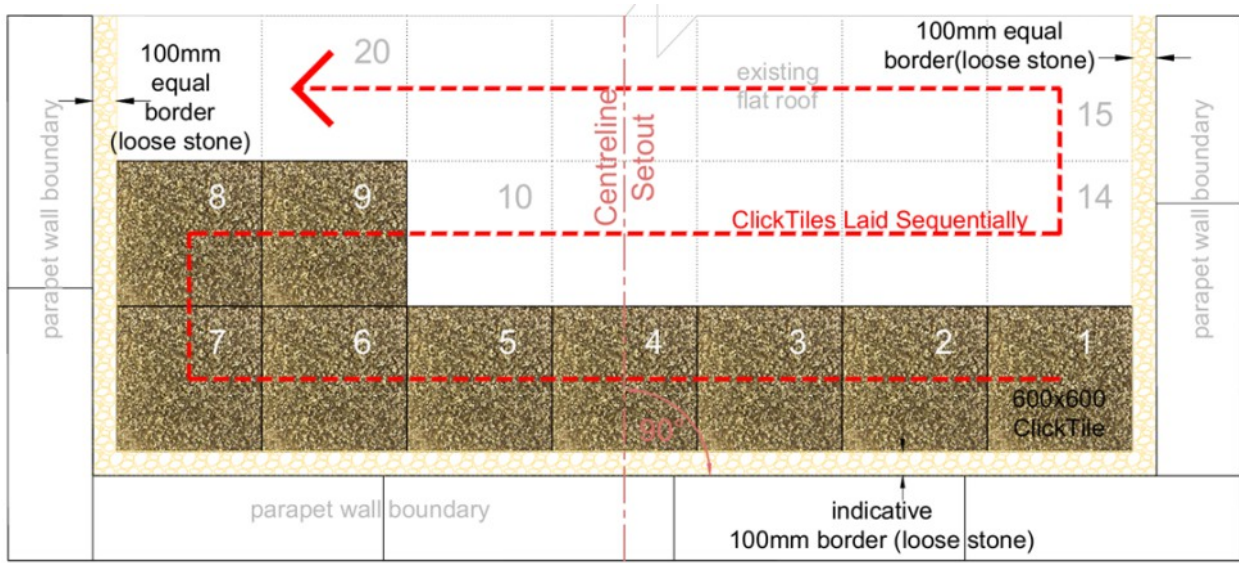
A Terraco representative can demonstrate this method.



## IMPORTANT NOTES

- Before final order of the Terraco ClickTile system customers should recheck and verify the agreed final layout plan.
- Terraco representative will provide suggested quantity of ClickTiles, indicative border areas, and quantities of Terraco loose stone and Addabond EZ. The final order quantities are at the discretion of the customer.
- The suggested minimum 100 mm border gap and loose stone areas is indicative only, it is designed to help accommodate dimensional tolerances and avoid the need to cut ClickTiles at the boundary.
- The setout lines, centerline's and overall plan of the ClickTile and borders are indicative only.
- When starting the installation, Lock the male lug of each Clicktile into the female receiver of the adjacent tile, progressing sequentially from one side to the other. After completing a row, begin the next row from the opposite side, maintaining a consistent locking direction.
- Around drainage outlets, Terraco advice is to leave a clear area of approximately 45x45cm to allow access for future maintenance and cleaning. This area can be filled with loose stone. If a ClickTile is required in this location, it can be made quickly removable by cutting off the male's connector lugs on 2 sides of a tile.
- Ensure the substrate is level and free of high points. If feasible, any raised areas should be removed to avoid tile edge lifting or uneven joints.
- The set out start points for ClickTiles differ from conventional paving/tiles, due to the sequential nature of the Terraco representative for recommended starting point and advice on row-by-row sequential works.

# CLICKTILE INSTALLATION GUIDELINES

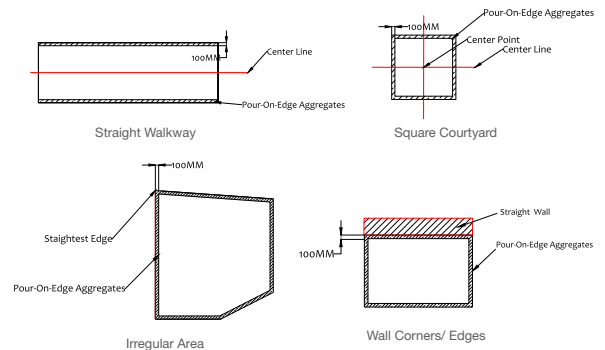


Indicative Plan of ClickTile installed sequentially

# INSTALLATION PRECAUTIONS

## Outdoor Tile vs. ClickTile Installation Scenarios

Installation Scenario	ClickTile
Straight Walkway	Establish a centerline along the short edge of the walkway. Lay full tiles symmetrically to both sides.
Square Courtyard	Begin from the intersection of center cross-lines and install tiles outward symmetrically.
Irregular Area	Begin laying full tiles along the straightest edge, leaving an allowance of approximately 100mm for final adjustments.
Wall Corners / Edges	Start installation along a straight wall, maintaining a 100mm gap for accurate fitting of full tiles.



Before starting, measure the tile layout against the existing substrate to confirm accuracy and minimize unnecessary small cuts. Adjust the layout at the start if needed.

Step 1: Begin laying the first row of tiles from the highest point of the setout area.

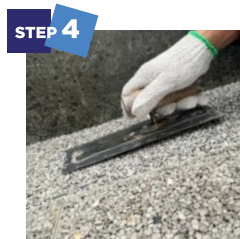
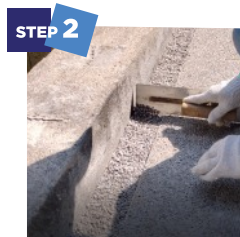
Step 2: Each connection should produce a distinct “click” sound as the male connector locks into the female receiver. This ensures a secure and stable installation.



## PERIMETER CLICKTILE FINISHING

For edges that do not require tile cutting, we recommend filling these gaps with loose aggregate stone that matches the specified Terraco resin-bound stone in ClickTile.

1. Pour the supplied loose stone into the edge gap until it is level with the adjacent ClickTiles.
2. Use a trowel or straight edge to press the stone firmly into the gap, ensuring it is perfectly level with the surrounding tiles.
3. For added stability, spray Addabond EZ over the loose stone to bind it in place.
4. Once complete, check all joints and edges to confirm the tiles are level and securely clicked in.



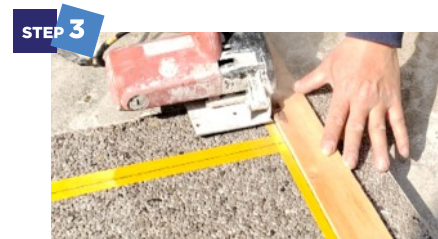
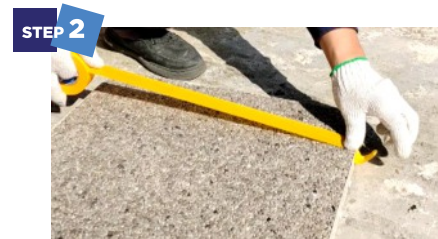
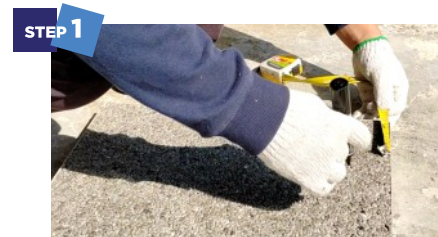
For tiles positioned above maintenance points or central rows, consider making one tile easily removable by removing the male connectors on two sides. The two opposite female connectors will keep it in position.

A Terraco representative can demonstrate this method.

## CUTTING CLICKTILES

Always wear proper safety gear when cutting tiles. Use a handheld dry/wet cutter or angle grinder.

1. Mark the cut line accurately before starting; applying masking tape along the cut can help protect the edges.
2. Cut slowly and steadily to avoid chipping or cracking.
3. Double-check your measurements before cutting to ensure precision.



Please visit [www.terraco.one](http://www.terraco.one) to access the ClickTile installation video and installation precautions.

Watch Our Easy-Install Guide!

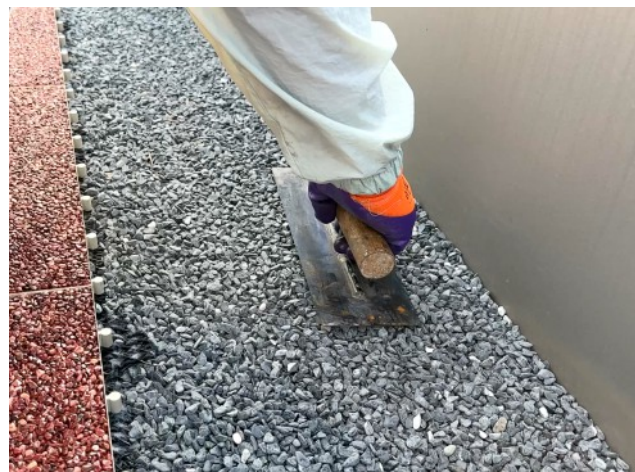
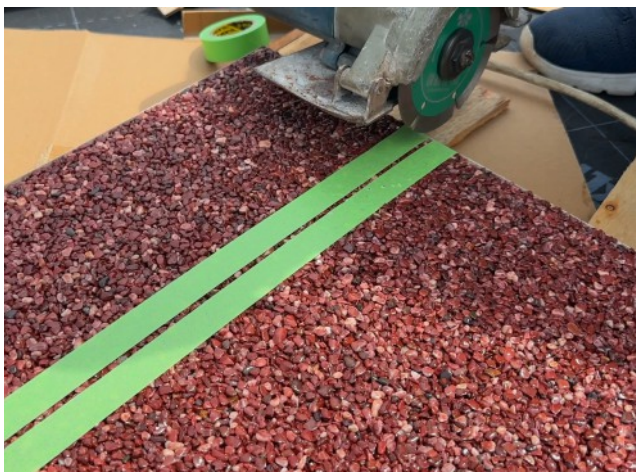


### DISCLAIMER

The information provided in this installation guide is for general reference only. While every effort has been made to ensure accuracy, the manufacturer and distributor Terraco assume no liability for errors, omissions, or the consequences of improper installation. It is the responsibility of the installer to follow all local building codes and regulations. The simple and secure interlocking of the ClickTiles provides a stable and level substrate. The resin bound stone provides the weight (ballast) over the entire roof surface and avoids the need for mechanical fixing to the substrate thus avoiding damaging any existing waterproofing layers. The design of the tile and the resin bound stone in each tile allows rainwater to percolate to existing finishes and outlets. The Terraco – Addagrip ClickTile is designed for pedestrian low traffic areas and is not designed for heavy mechanical loads. The manufacturer is not responsible for damages resulting from misuse, faulty installation, or deviations from recommended procedures.

### CONTACT DETAILS

# PROJECT SHOWCASE





[www.terraco.com](http://www.terraco.com)

SWEDEN • UK • IRELAND • RUSSIA • TURKEY • ALGERIA • EGYPT  
JORDAN • UAE • THAILAND • VIETNAM • CHINA • KOREA • INDONESIA